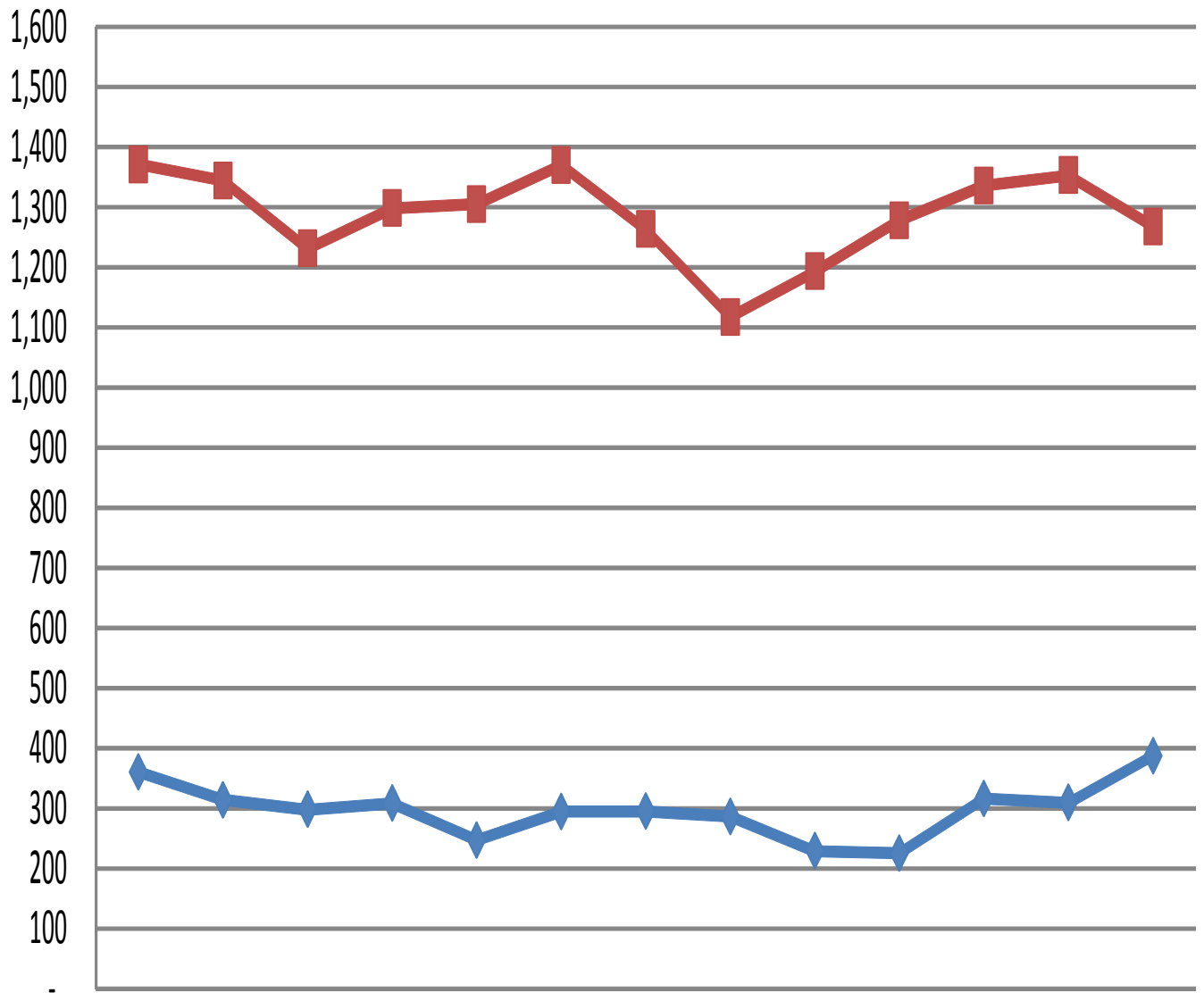


Washington County Single Family Residential Homes Sold & Total Listings

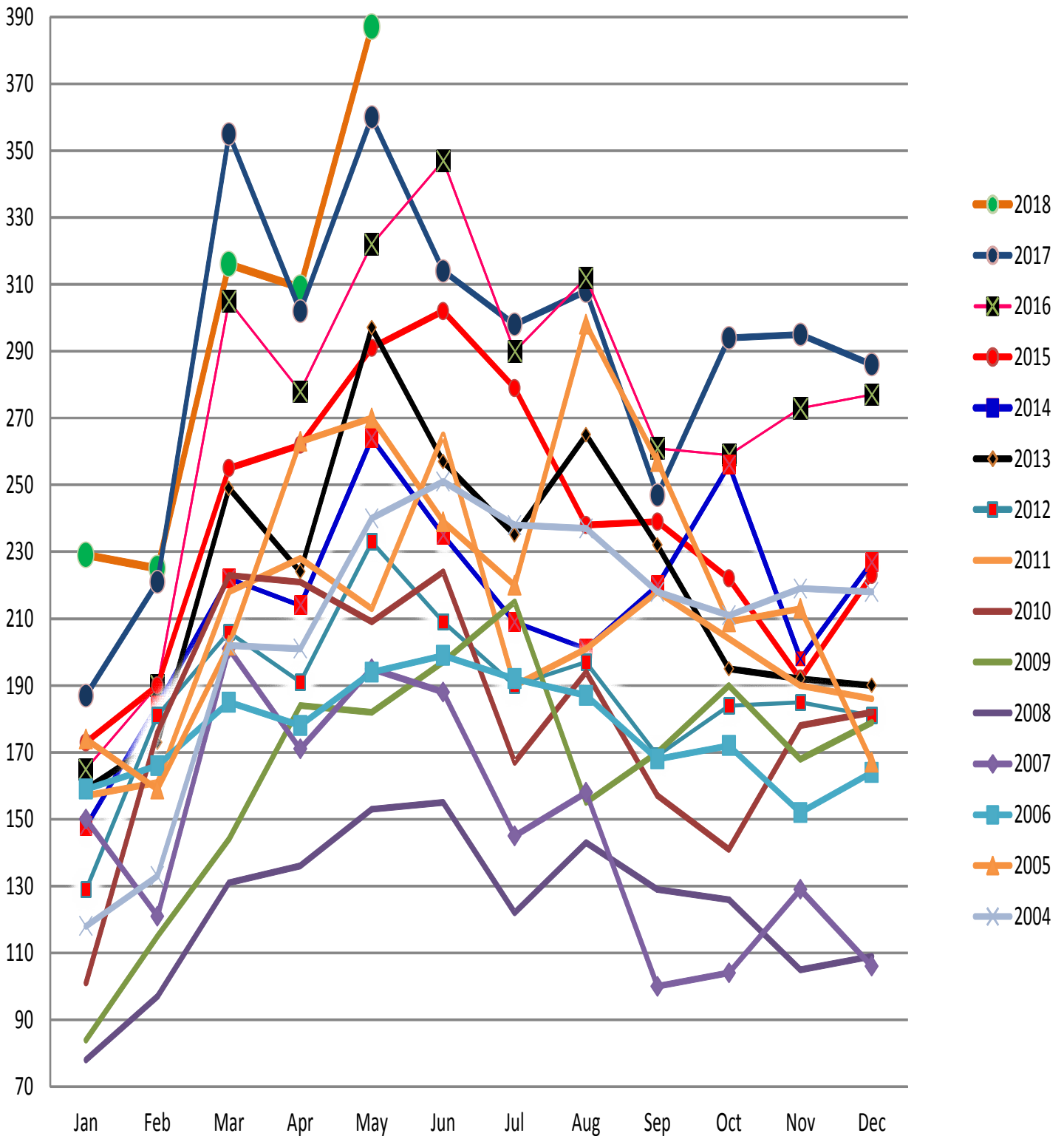
According to the Washington Board of Realtors & does not include Outside Area Numbers.
Also does not include Condo, Townhouse, Modular, Manufactured, Mobile, or New Construction.



	May-17	Jun-17	Jul-17	Aug-17	Sep-17	Oct-17	Nov-17	Dec-17	Jan-18	Feb-18	Mar-18	Apr-18	May-18
◆ Homes Sold	360	314	298	308	247	294	295	286	229	225	316	309	387
■ Total Listings	1371	1344	1231	1298	1305	1370	1263	1117	1193	1278	1336	1353	1268

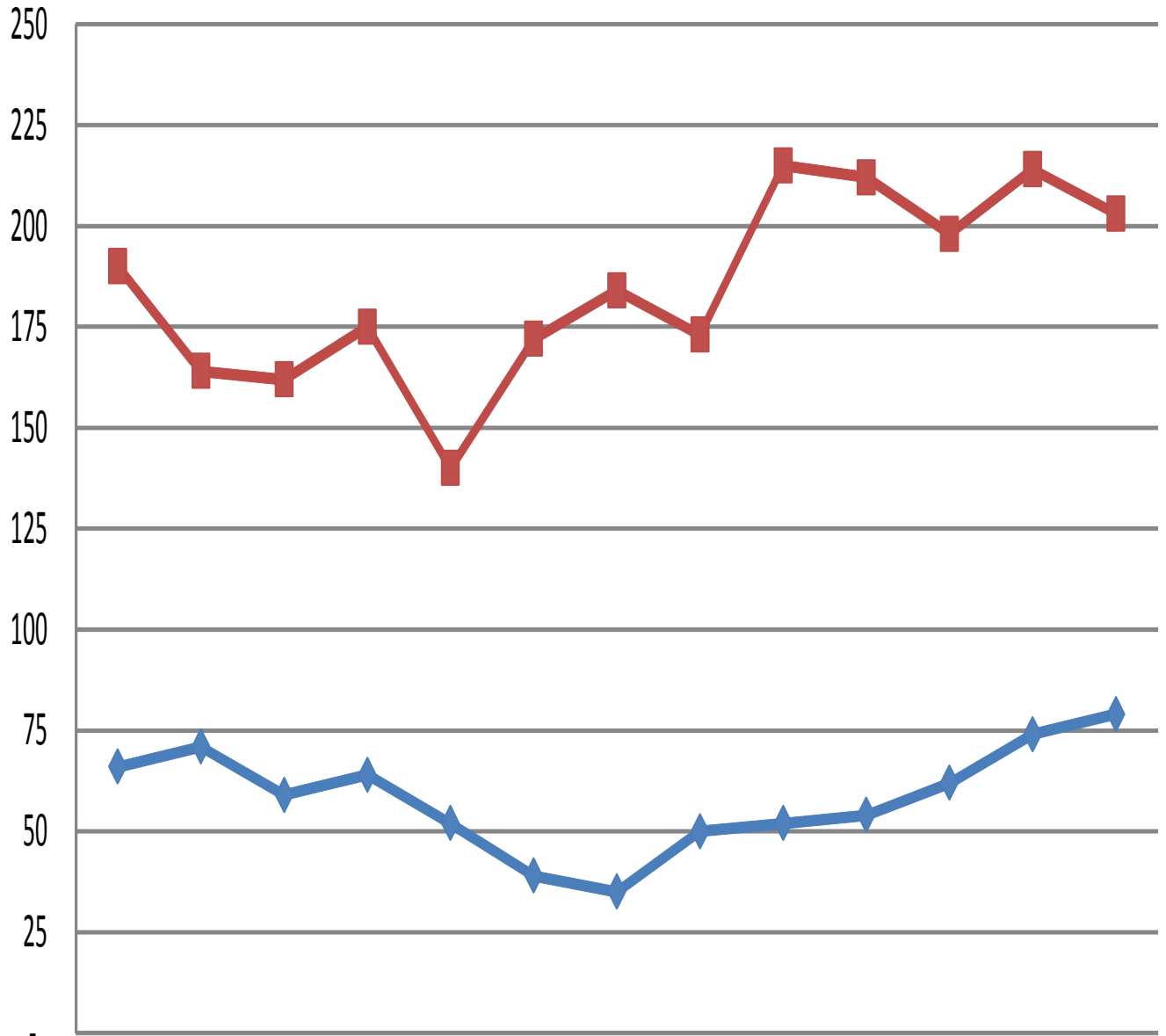
Washington County Single Family Residential Home Sales by Year

According to the Washington Board of Realtors & does not include Outside Area Numbers.
Also does not include Condo, Townhouse, Modular, Manufactured, Mobile or New Construction.



Washington County Condo/Townhouse Sales & Listings

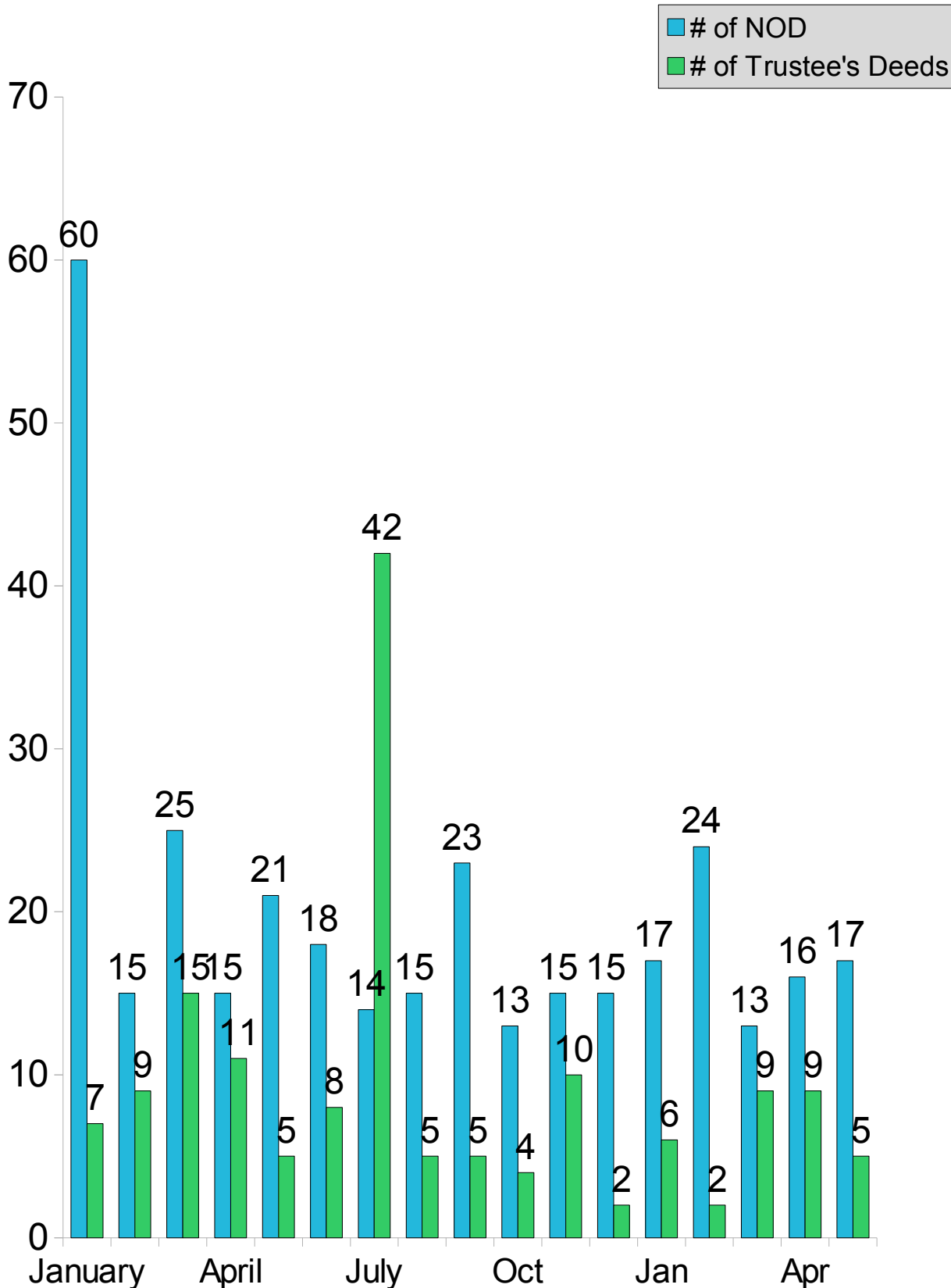
According to the Washington Board of Realtors & does not include Outside Area Numbers.



	May-17	Jun-17	Jul-17	Aug-17	Sep-17	Oct-17	Nov-17	Dec-17	Jan-18	Feb-18	Mar-18	Apr-18	May-18
◆ Condo/Townhome Sold	66	71	59	64	52	39	35	50	52	54	62	74	79
■ Condo/Townhome Listings	190	164	162	175	140	172	184	173	215	212	198	214	203

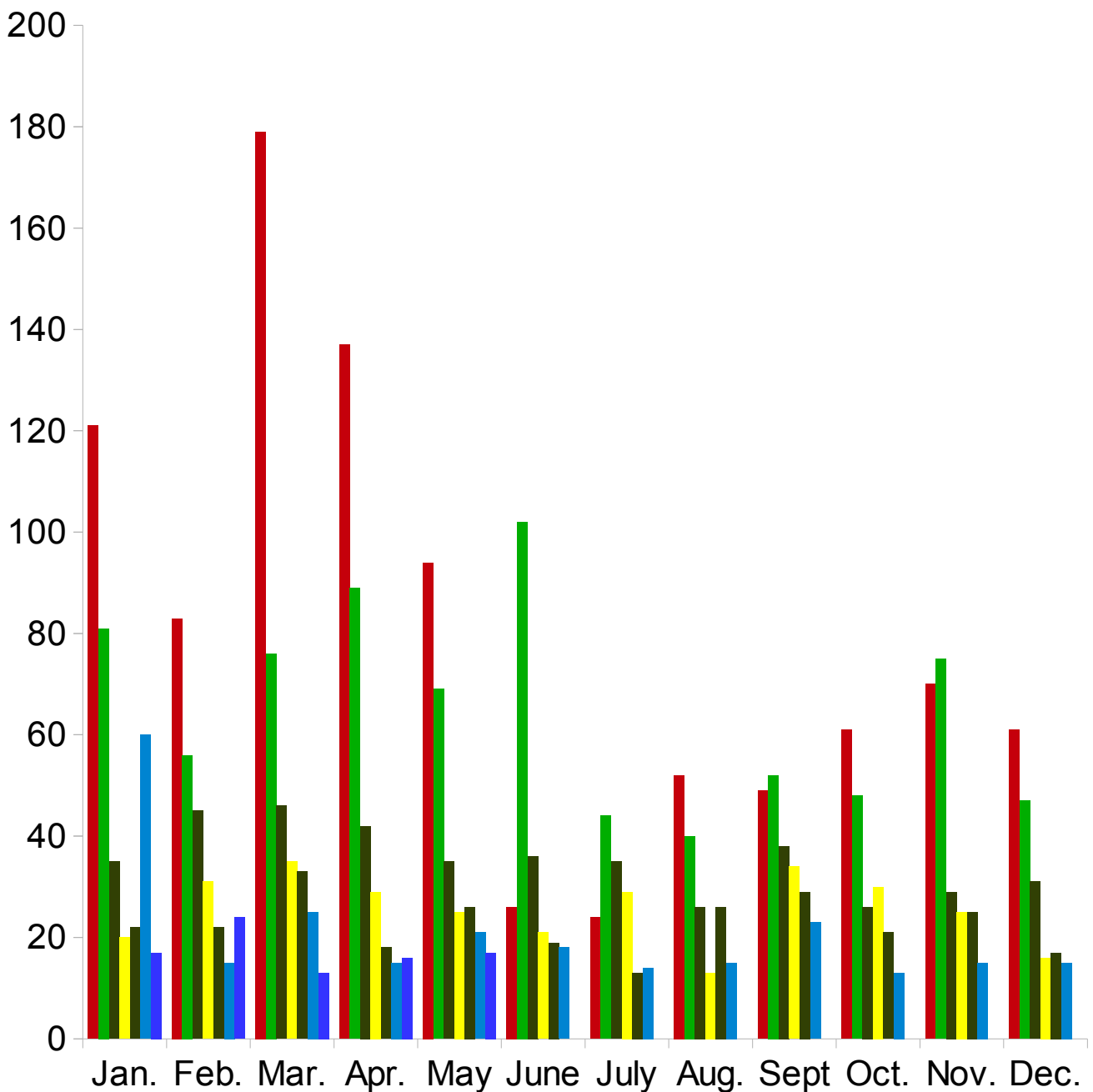
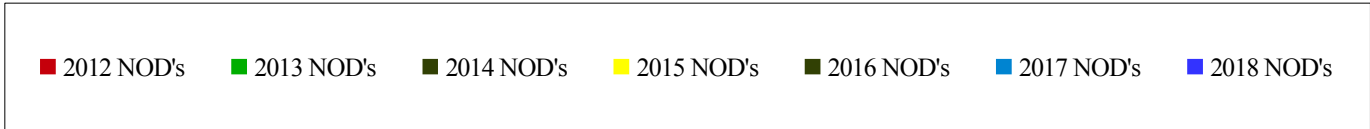
Washington County Notice of Defaults & Trustee's Deeds Per Month

From Jan. 1, 2017 to May 31, 2018 according to Washington County Records as researched by Invest Title Services, Inc.



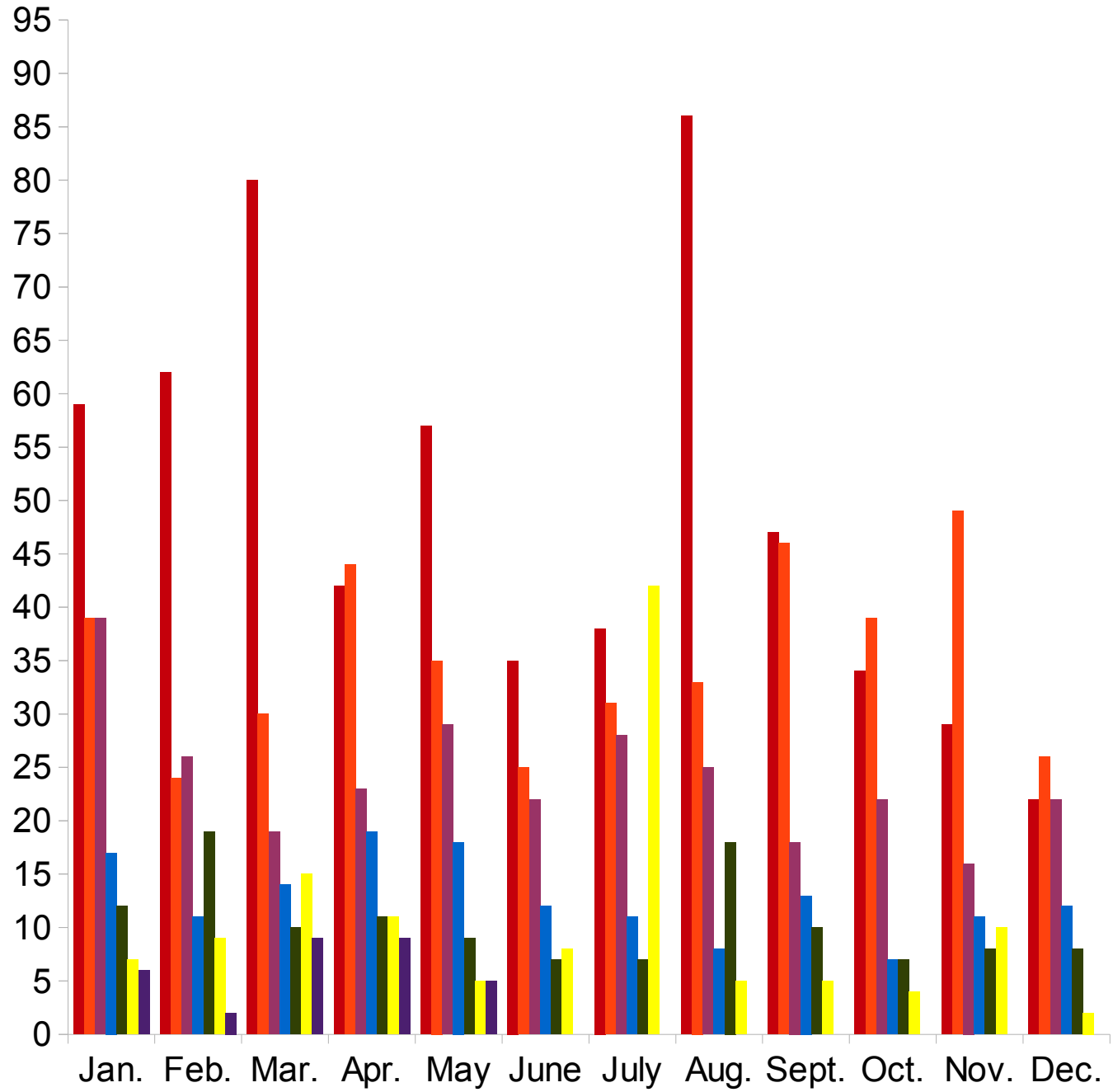
Washington County Notice of Defaults by Year

From Jan. 1, 2012 to May 31, 2018 according to Washington County Records as researched by Invest Title Services, Inc.



Washington County Trustee's Deeds by Year

From Jan. 1, 2010 to May 31, 2018 according to Washington County Records as researched by Invest Title Services, Inc.



Southwestern Utah Building Permit Summary

From Jan. 1, 2018 to June 13, 2018 (permits over \$10,000) according to
The Southwestern Utah Construction Monitor

<i>Residential</i>	<i>Permits</i>	<i>Value</i>	<i>Units</i>
Single Family Homes	1318	\$262,200,249	1352
Other	649	\$61,994,503	317
Total	1967	\$324,194,752	1669

<i>Commercial</i>	<i>Permits</i>	<i>Value</i>	<i>Units</i>
Offices/Banks/R&D Professional	4	\$6,043,000	0
Retail/Dining/Personal Care	2	\$1,848,314	0
Public Buildings & Projects	1	\$192,000	0
Other	158	\$69,202,350	0
Total	165	\$77,285,664	0

Top 25 Southwestern Utah Home Builders

From Jan. 1, 2018 to May 31, 2018 according to The
Southwestern Utah Construction Monitor

<i>Builder</i>	<i>Homes</i>	<i>Total Value of Construction Permits</i>
1- Cole West Home	123	\$18,778,330.00
2- SalisburyHomes	117	\$18,115,491.00
3-Ence Homes	95	\$16,928,893.00
4-Sun River Construction	49	\$6,189,000.00
5-New Trend Construction	24	\$5,944,574.00
6- S&S Homes	25	\$5,816,500.00
7-Ivory Homes	31	\$5,401,761.00
8-Perry Homes	36	\$5,267,345.00
9-American Heritage Homes	26	\$5,145,816.00
10-Taylor Built Homes	18	\$4,937,000.00
11-Sullivan Homes	25	\$4,284,020.00
12-Anderson Custom Homes	5	\$2,800,033.00
13-Enhanced Home Builders	15	\$2,485,552.00
14-Simister Homes	8	\$2,232,114.00
15-Custom Contracting Corp	9	\$2,126,985.00
16-Interstate Homes	12	\$1,999,934.00
17- Dan Hoopes Construction Inc	11	\$1,993,557.00
18-Van Guilder Homes	10	\$1,835,438.00
19-Gemstone Homes	16	\$1,791,310.00
20-Coral Canyon Builders	9	\$1,766,312.00
21 – Desert Sky Homes	4	\$1,695,124.00
22- Premier Development	6	\$1,693,463.00
23- Circle A Builders	5	\$1,606,152.00
24-Perry Homes	7	\$1,524,363.00
25-Rock Solid Builders	7	\$1,484,780.00

Subdivided Lots

From May 1, 2018 to May 31, 2018 according to Washington
County Realtors Assoc.

<i>Area</i>	<i># Sold</i>	<i>Avg. Sale Price</i>	<i>Total Active</i>	<i>Days On Market</i>
Greater St. George	42	\$181,877.00	496	233
Hurricane Valley	12	\$128,833.00	149	194
Zion Park	2	\$99,000.00	55	335
Northwest County	3	\$54,500.00	47	369
Northeast County	1	\$54,900.00	19	229
Outside County	11	\$30,754.00	250	284

From Jan. 1, 2018 to May 31, 2018 according to Washington
County Realtors Assoc.

<i>Area</i>	<i># Sold</i>	<i>Avg. Sale Price</i>	<i>Total Active</i>	<i>Days On Market</i>
Greater St. George	176	\$177,830.00	805	216
Hurricane Valley	61	\$81,179.00	242	176
Zion Park	8	\$92,125.00	73	329
Northwest County	18	\$70,217.00	68	323
Northeast County	5	\$68,780.00	28	210
Outside County	49	\$40,161.00	342	267

Land/Acreage Sold

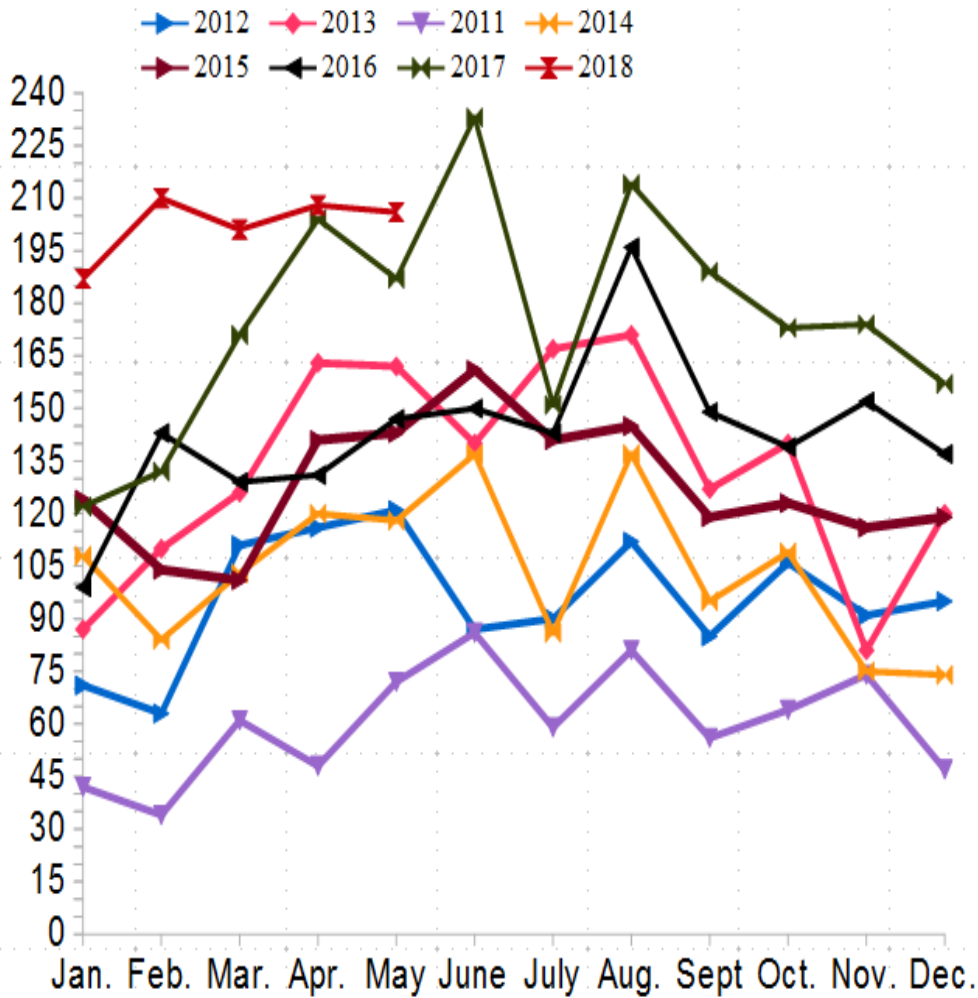
From May 1, 2018 to May 31, 2018 according to Washington
County Realtors Assoc.

<i>Area</i>	<i># Sold</i>	<i>Avg. Sale Price</i>	<i>Total Active</i>	<i>Days On Market</i>
Greater St. George	5	\$77,400.00	107	261
Hurricane Valley	4	\$103,375.00	45	286
Zion Park	0	\$0.00	31	368
Northwest County	3	\$27,833.00	52	286
Northeast County	3	\$112,633.00	22	204
Outside County	8	\$46,175.00	379	285

From Jan. 1, 2018 to May 31, 2018 according to Washington
County Realtors Assoc.

<i>Area</i>	<i># Sold</i>	<i>Avg. Sale Price</i>	<i>Total Active</i>	<i>Days On Market</i>
Greater St. George	29	\$200,349.00	151	239
Hurricane Valley	24	\$291,779.00	74	231
Zion Park	4	\$224,750.00	46	329
Northwest County	11	\$58,764.00	69	274
Northeast County	17	\$96,371.00	46	187
Outside County	41	\$66,903.00	492	302

Single Family Home Permits for Washington County per the Southwest Utah Construction Monitor



	2012	2013	2011	2014	2015	2016	2017	2018
Categories	Y-Values	Y-Values	Y-Values	Y-Values	Y-Values	Y-Values	Y-Values	Y-Values
Jan.	71	87	42	108	124	99	122	187
Feb.	63	110	34	84	104	143	132	210
Mar.	111	126	61	103	101	129	171	201
Apr.	116	163	48	120	141	131	204	208
May	121	162	72	118	143	147	187	206
June	87	140	86	137	161	150	233	
July	90	167	59	86	141	143	151	
Aug.	112	171	81	137	145	196	214	
Sept.	85	127	56	95	119	149	189	
Oct.	106	140	64	109	123	139	173	
Nov.	91	81	74	75	116	152	174	
Dec.	95	120	47	74	119	137	157	