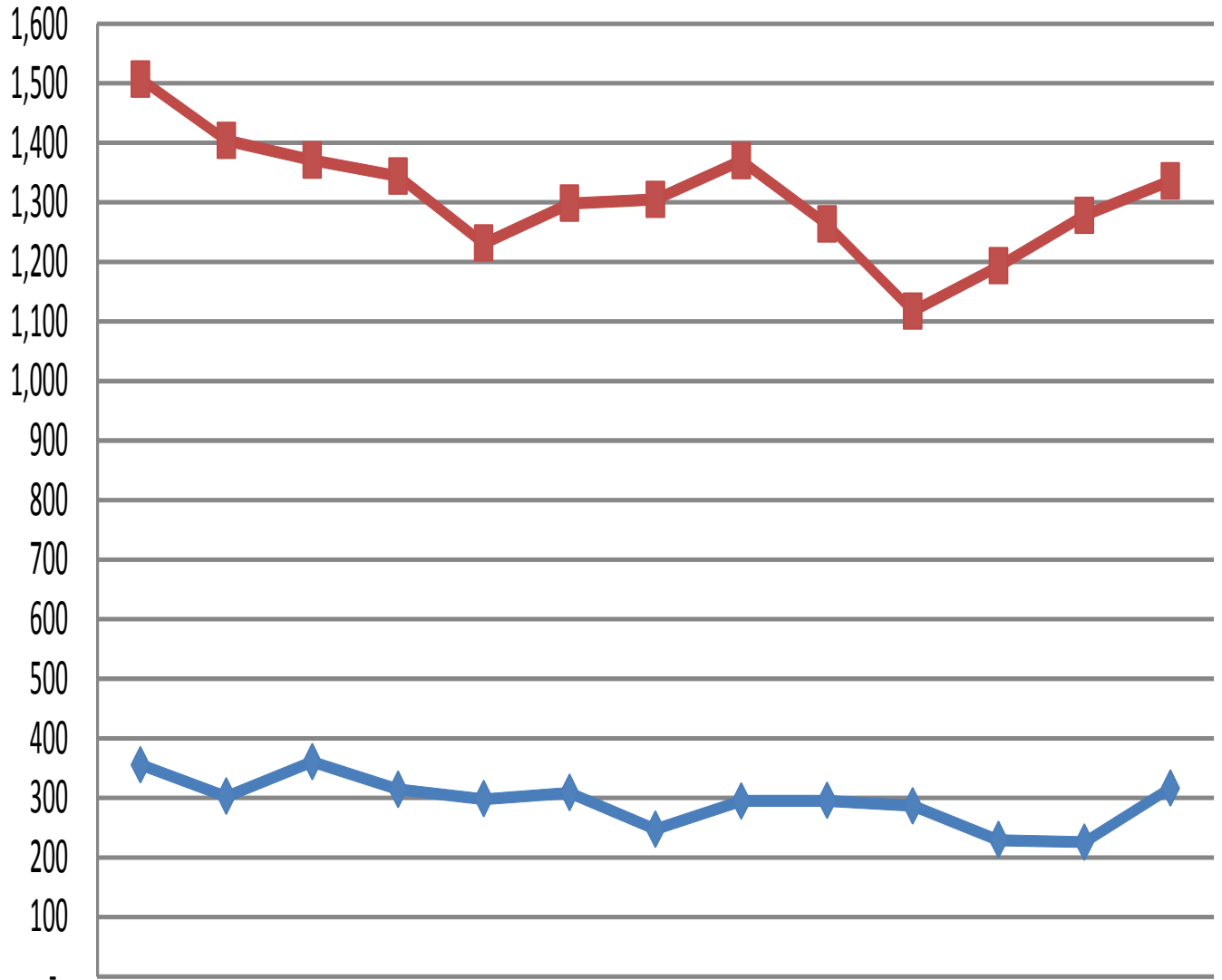


# Washington County Single Family Residential Homes Sold & Total Listings

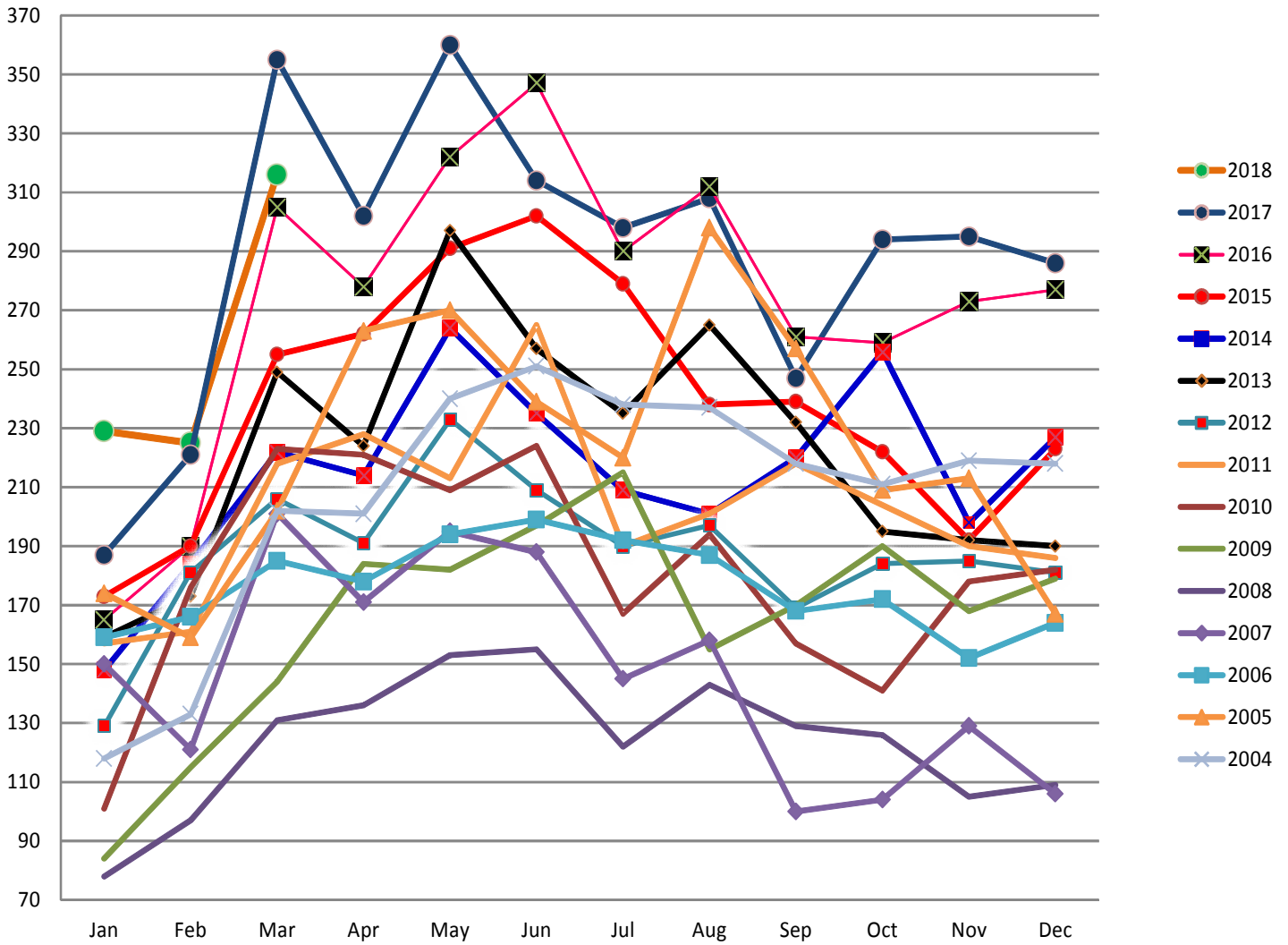
According to the Washington Board of Realtors & does not include Outside Area Numbers.  
Also does not include Condo, Townhouse, Modular, Manufactured, Mobile, or New Construction.



	Mar-17	Apr-17	May-17	Jun-17	Jul-17	Aug-17	Sep-17	Oct-17	Nov-17	Dec-17	Jan-18	Feb-18	Mar-18
◆ Homes Sold	355	302	360	314	298	308	247	294	295	286	229	225	316
■ Total Listings	1507	1404	1371	1344	1231	1298	1305	1370	1263	1117	1193	1278	1336

# Washington County Single Family Residential Home Sales by Year

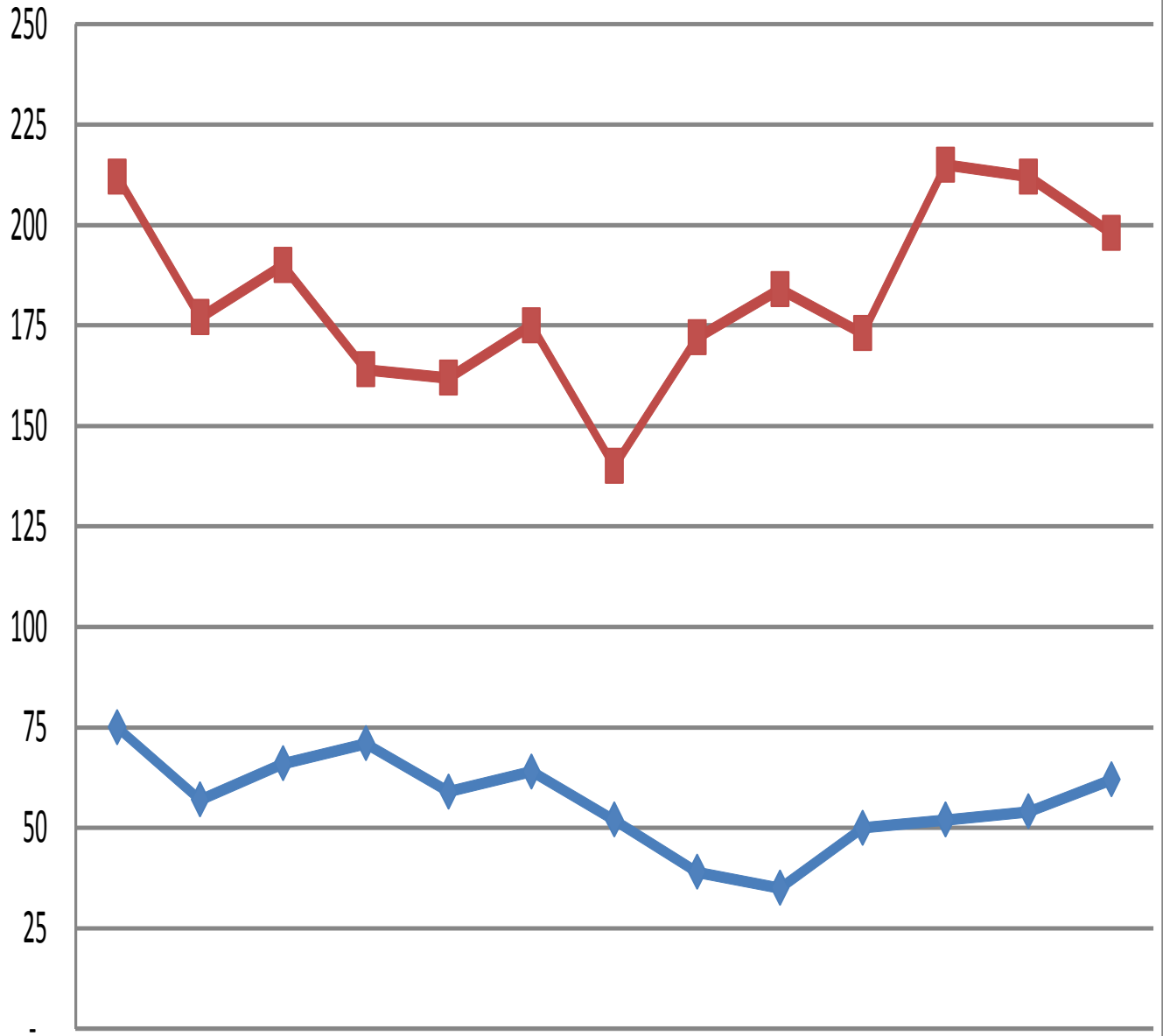
According to the Washington Board of Realtors & does not include Outside Area Numbers.  
Also does not include Condo, Townhouse, Modular, Manufactured, Mobile or New Construction.



	Jan	Feb	Mar	Apr	May	Jun	Jul	Aug	Sep	Oct	Nov	Dec
<b>2018</b>	229	225	316									
2017	187	221	355	302	360	314	298	308	247	294	295	286
2016	165	190	305	278	322	347	290	312	261	259	273	277
2015	173	190	255	262	291	302	279	238	239	222	192	223
2014	148	184	222	214	264	235	209	201	220	256	198	227
2013	159	173	249	224	297	257	235	265	232	195	192	190
2012	129	181	206	191	233	209	190	197	169	184	185	181
2011	157	161	218	228	213	265	190	201	218	204	190	186
2010	101	176	223	221	209	224	167	194	157	141	178	182
2009	84	115	144	184	182	197	215	155	170	190	168	179
2008	78	97	131	136	153	155	122	143	129	126	105	109
2007	150	121	201	171	195	188	145	158	100	104	129	106
2006	159	166	185	178	194	199	192	187	168	172	152	164
2005	174	159	202	263	270	239	220	298	257	209	213	167
2004	118	133	202	201	240	251	238	237	218	211	219	218

# Washington County Condo/Townhouse Sales & Listings

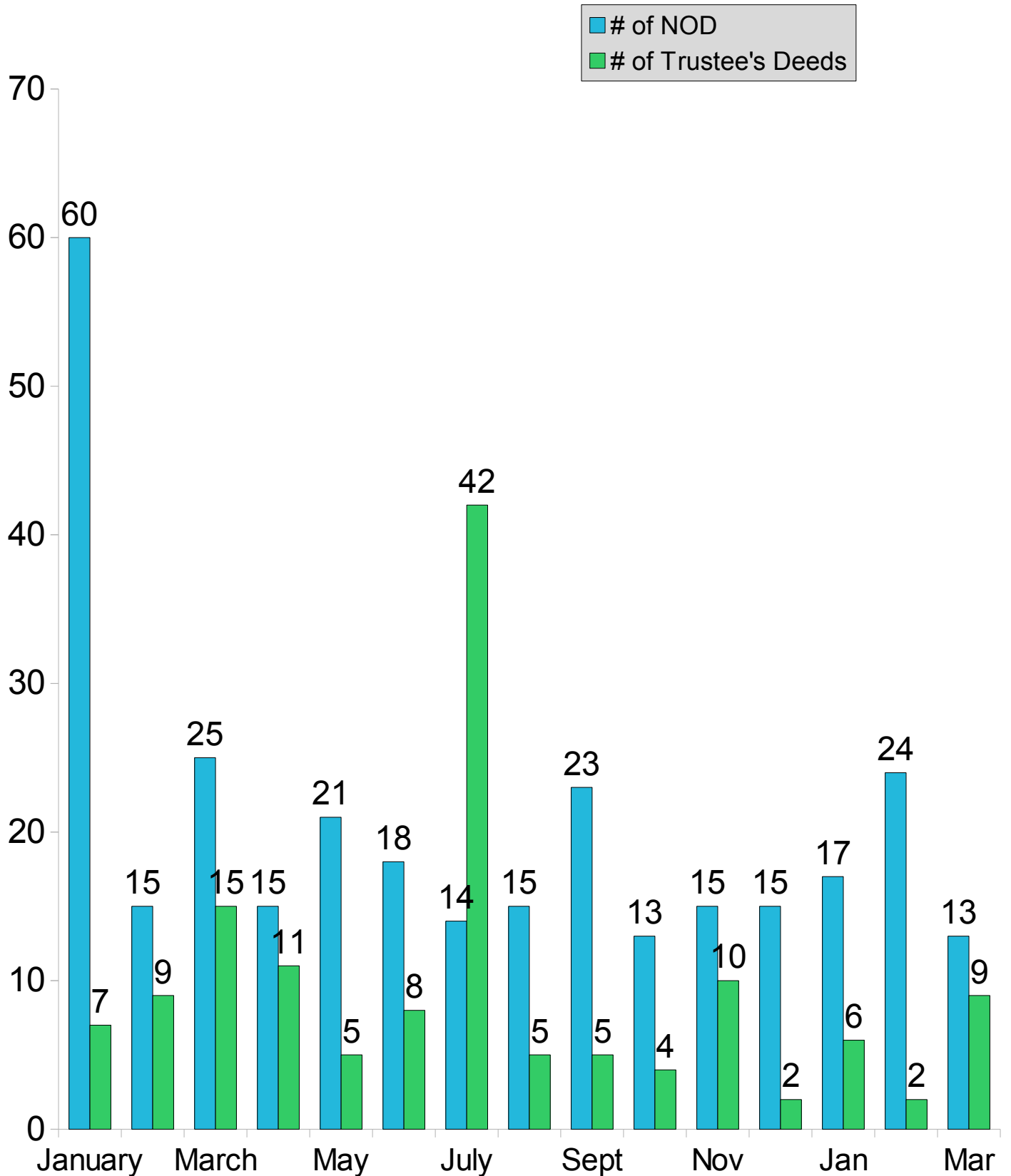
According to the Washington Board of Realtors & does not include Outside Area Numbers.



	Mar-17	Apr-17	May-17	Jun-17	Jul-17	Aug-17	Sep-17	Oct-17	Nov-17	Dec-17	Jan-18	Feb-18	Mar-18
◆ Condo/Townhome Sold	75	57	66	71	59	64	52	39	35	50	52	54	62
■ Condo/Townhome Listings	212	177	190	164	162	175	140	172	184	173	215	212	198

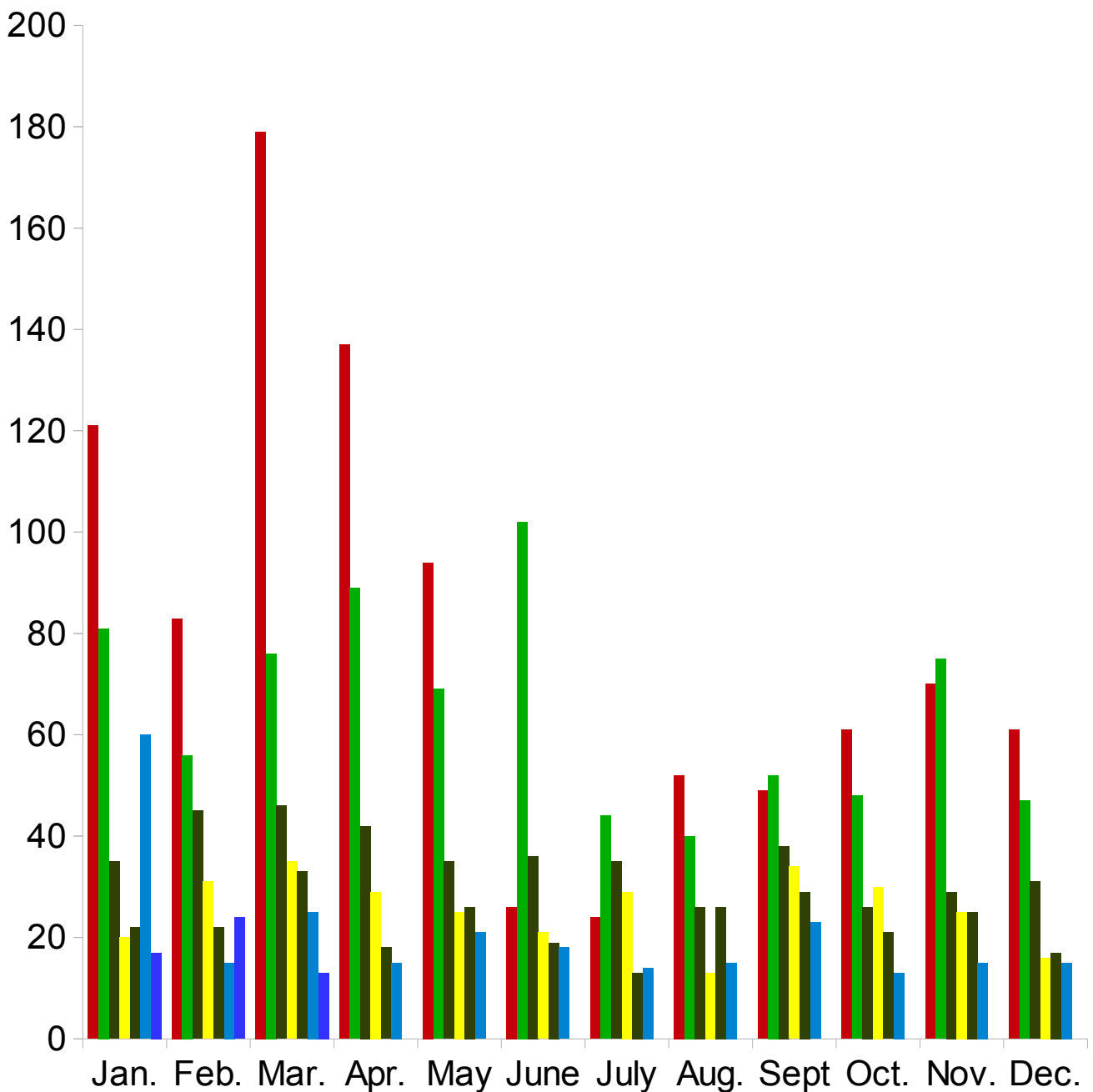
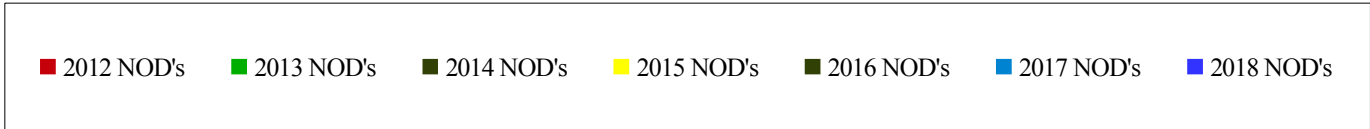
# Washington County Notice of Defaults & Trustee's Deeds Per Month

From Jan. 1, 2017 to Mar 31, 2018 according to Washington County Records as researched by Invest Title Services, Inc.



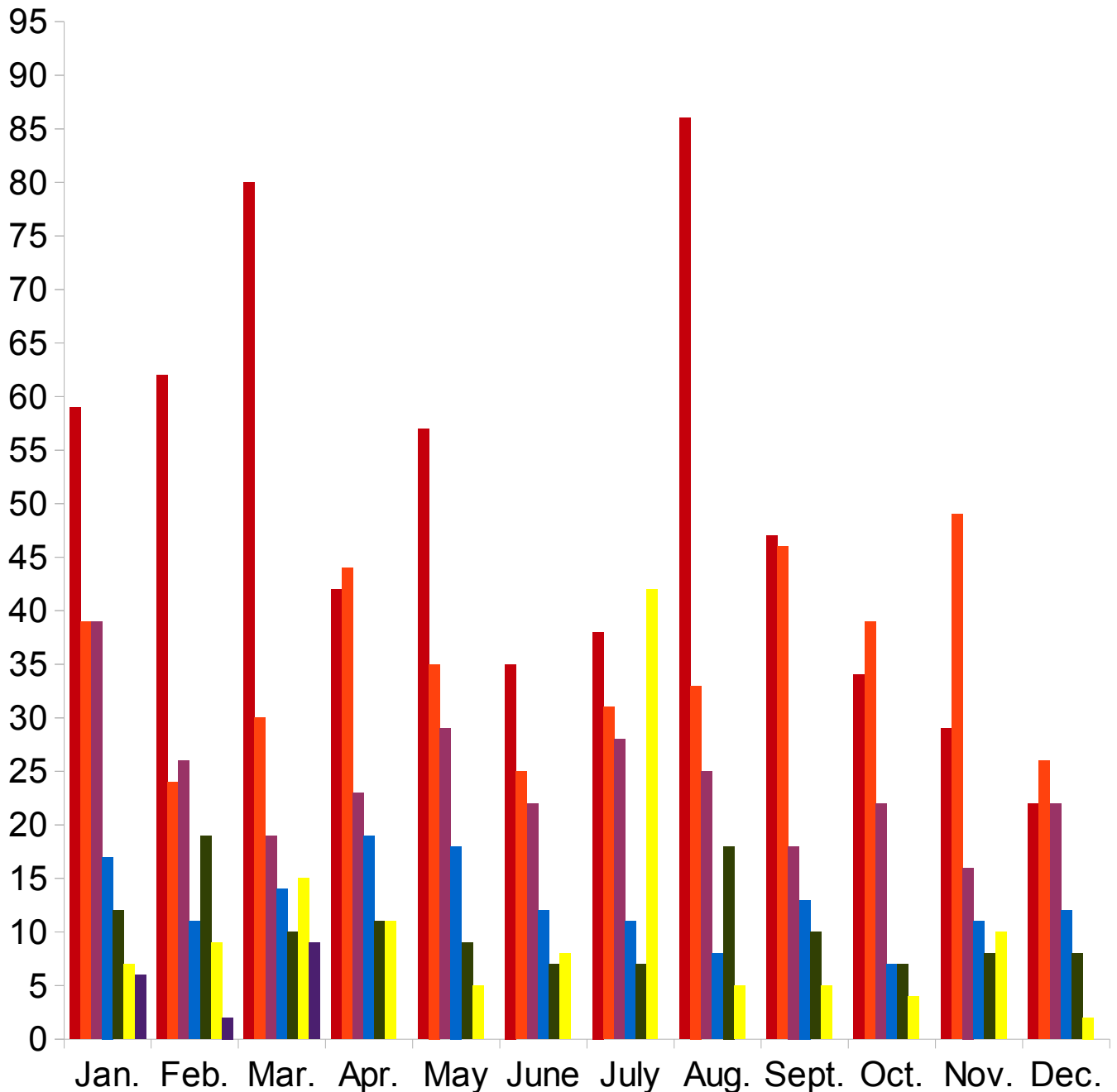
# Washington County Notice of Defaults by Year

From Jan. 1, 2012 to Mar 31, 2018 according to Washington County Records as researched by Invest Title Services, Inc.



# Washington County Trustee's Deeds by Year

From Jan. 1, 2010 to Mar 31, 2018 according to Washington County Records as researched by Invest Title Services, Inc.



# Southwestern Utah Building Permit Summary

From Jan. 1, 2018 to Apr 11, 2018 (permits over \$10,000) according to  
The Southwestern Utah Construction Monitor

<i>Residential</i>	<i>Permits</i>	<i>Value</i>	<i>Units</i>
Single Family Homes	803	\$161,185,018	835
Other	438	\$42,691,910	245
<b>Total</b>	<b>1241</b>	<b>\$203,876,928</b>	<b>1080</b>

<i>Commercial</i>	<i>Permits</i>	<i>Value</i>	<i>Units</i>
Offices/Banks/R&D Professional	2	\$3,622,000	0
Retail/Dining/Personal Care	1	\$750,000	0
Public Buildings & Projects	1	\$192,000	0
Other	108	\$54,147,456	0
<b>Total</b>	<b>112</b>	<b>\$58,711,456</b>	<b>0</b>

# Top 25 Southwestern Utah Home Builders

From Jan. 1, 2018 to Mar 31, 2018 according to The  
Southwestern Utah Construction Monitor

<i>Builder</i>	<i>Homes</i>	<i>Total Value of Construction Permits</i>
1-Salisbury Homes	76	\$12,014,117.00
2- Ence Homes	61	\$10,930,601.00
3-Jack Fisher Const of So Utah	83	\$10,720,178.00
4-Ivory Homes	29	\$4,659,094.00
5-Sun River	31	\$3,945,000.00
6- New Trend Construction	15	\$3,819,001.00
7-American Heritage Homes	16	\$3,353,774.00
8-Perry Homes	20	\$3,174,136.00
9-S&S Homes	8	\$2,843,862.00
10-Sullivan Homes	16	\$2,794,208.00
11-Anderson Custom Homes	4	\$2,570,033.00
12-Enhanced Home Builders	15	\$2,485,552.00
13-Taylor Built Homes	7	\$1,881,000.00
14-Custom Contracting Corp	7	\$1,662,870.00
15-Premier Dev	5	\$1,491,901.00
16-Cool Homes Inc	5	\$1,443,170.00
17- Desert Sky Homes	3	\$1,402,910.00
18-Dan Hoopes Construction Inc	7	\$1,284,879.00
19-Simister Homes	5	\$1,260,742.00
20-Split Rock Custom Homes	4	\$1,114,705.00
21 - Greg Ence Construction	3	\$1,103,640.00
22- Brian Geer Dev	4	\$1,063,590.00
23-AJ Construction	4	\$1,032,000.00
24-Stewart Enterprises	8	\$1,011,448.00
25-J Craft Homes	1	\$900,000.00



## Subdivided Lots

From Mar 1, 2018 to Mar 31, 2018 according to Washington  
County Realtors Assoc.

<i>Area</i>	<i># Sold</i>	<i>Avg. Sale Price</i>	<i>Total Active</i>	<i>Days On Market</i>
Greater St. George	39	\$169,394.00	521	208
Hurricane Valley	13	\$66,423.00	128	209
Zion Park	0	\$0.00	46	439
Northwest County	9	\$56,933.00	48	410
Northeast County	0	\$0.00	14	431
Outside County	7	\$34,357.00	254	407

From Jan. 1, 2018 to Mar 31, 2018 according to Washington  
County Realtors Assoc.

<i>Area</i>	<i># Sold</i>	<i>Avg. Sale Price</i>	<i>Total Active</i>	<i>Days On Market</i>
Greater St. George	96	\$192,542.00	684	212
Hurricane Valley	41	\$70,603.00	183	191
Zion Park	3	\$118,667.00	54	387
Northwest County	14	\$63,957.00	60	318
Northeast County	3	\$66,667.00	20	236
Outside County	20	\$41,855.00	292	262

## Land/Acreage Sold

From Mar 1, 2018 to Mar 31, 2018 according to Washington  
County Realtors Assoc.

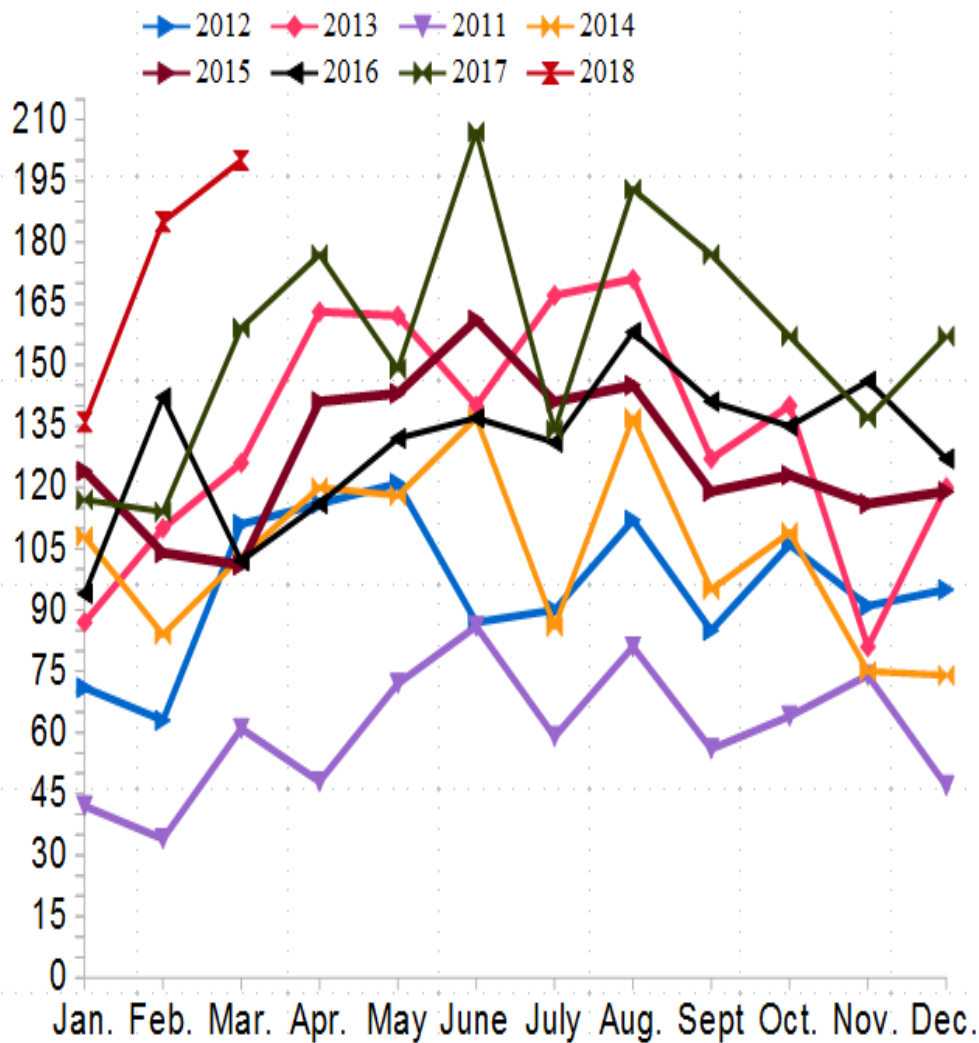
<i>Area</i>	<i># Sold</i>	<i>Avg. Sale Price</i>	<i>Total Active</i>	<i>Days On Market</i>
Greater St. George	6	\$166,565.00	104	243
Hurricane Valley	7	\$358,571.00	47	269
Zion Park	1	\$59,000.00	40	315
Northwest County	2	\$72,500.00	47	304
Northeast County	3	\$82,633.00	29	157
Outside County	8	\$57,344.00	329	322

From Jan. 1, 2018 to Mar 31, 2018 according to Washington  
County Realtors Assoc.

<i>Area</i>	<i># Sold</i>	<i>Avg. Sale Price</i>	<i>Total Active</i>	<i>Days On Market</i>
Greater St. George	16	\$249,570.00	127	234
Hurricane Valley	13	\$262,846.00	61	236
Zion Park	2	\$217,000.00	43	308
Northwest County	6	\$66,817.00	55	292
Northeast County	9	\$95,833.00	41	180
Outside County	24	\$68,547.00	389	324

The data, charts, and graphs are for informational purposes only. Inwest Title Services, Inc. makes no representations that the information contained herein is complete, accurate or applicable to your individual circumstances.

# Single Family Home Permits for Washington County per the Southwest Utah Construction Monitor



	2012	2013	2011	2014	2015	2016	2017	2018
Categories	Y-Values	Y-Values	Y-Values	Y-Values	Y-Values	Y-Values	Y-Values	Y-Values
Jan.	71	87	42	108	124	94	117	136
Feb.	63	110	34	84	104	142	114	185
Mar.	111	126	61	103	101	102	159	200
Apr.	116	163	48	120	141	116	177	
May	121	162	72	118	143	132	149	
June	87	140	86	137	161	137	207	
July	90	167	59	86	141	131	134	
Aug.	112	171	81	137	145	158	193	
Sept.	85	127	56	95	119	141	177	
Oct.	106	140	64	109	123	135	157	
Nov.	91	81	74	75	116	146	137	
Dec.	95	120	47	74	119	127	157	