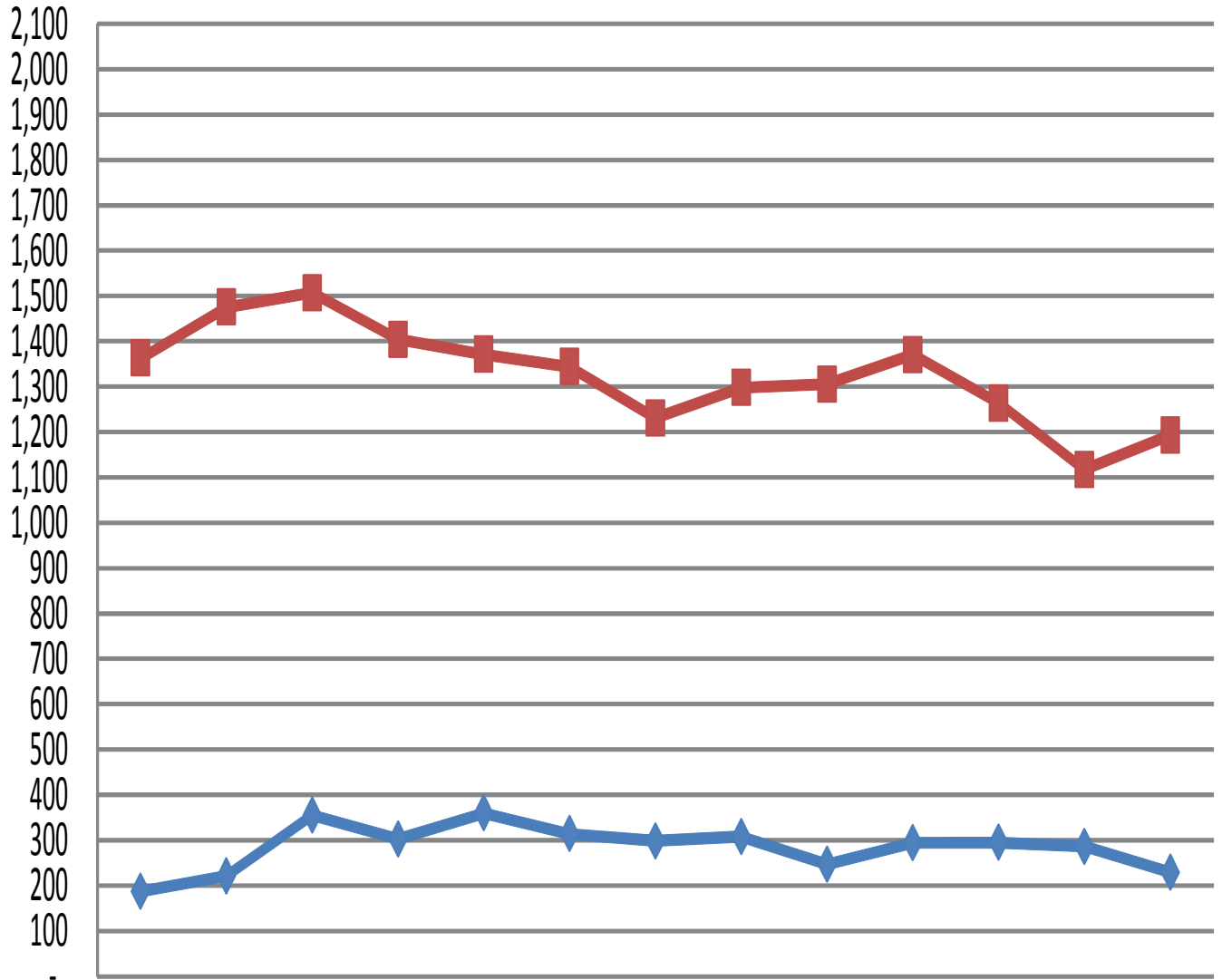


Washington County Single Family Residential Homes Sold & Total Listings

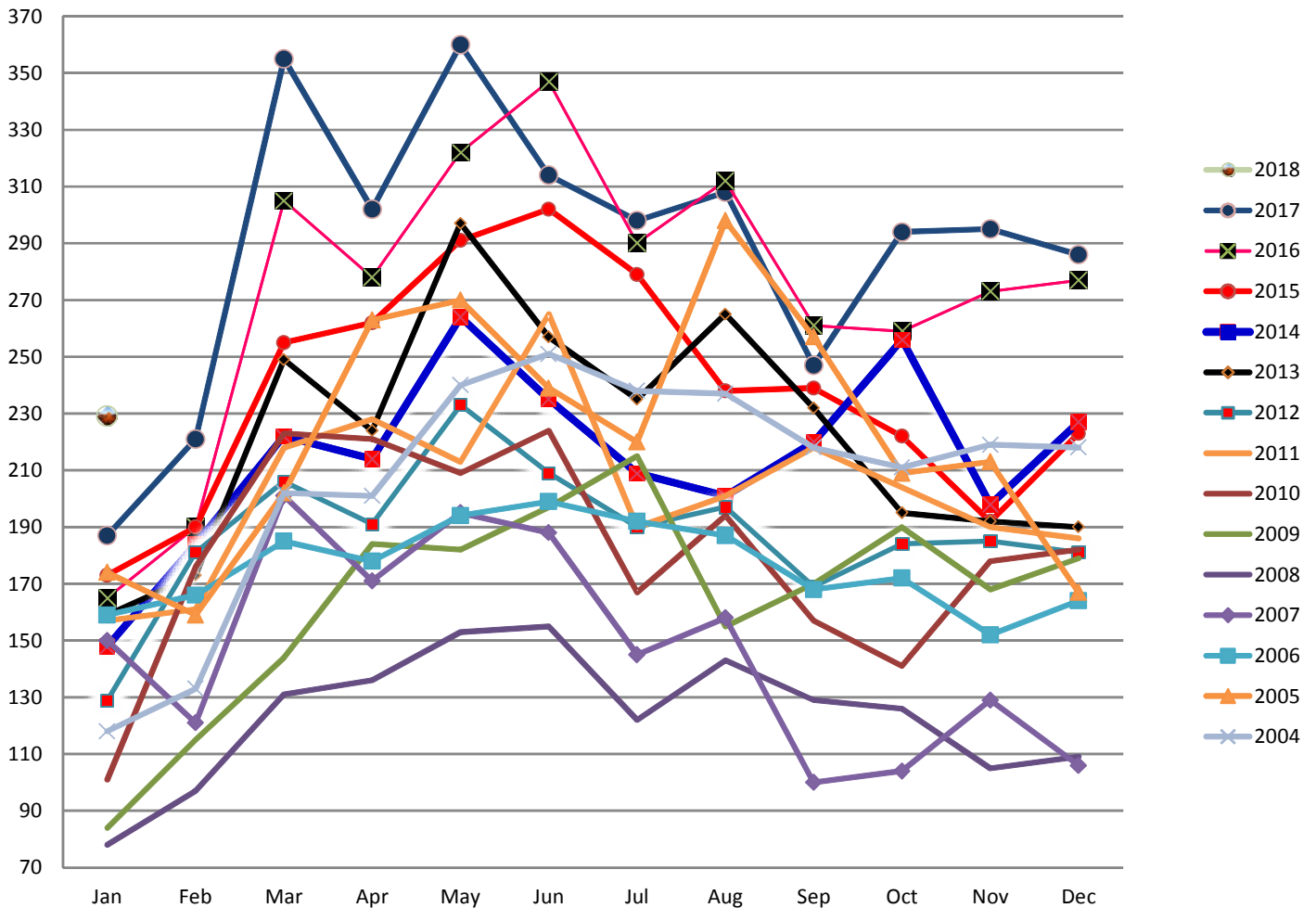
According to the Washington Board of Realtors & does not include Outside Area Numbers.
Also does not include Condo, Townhouse, Modular, Manufactured, Mobile, or New Construction.



	Jan-17	Feb-17	Mar-17	Apr-17	May-17	Jun-17	Jul-17	Aug-17	Sep-17	Oct-17	Nov-17	Dec-17	Jan-18
◆ Homes Sold	187	221	355	302	360	314	298	308	247	294	295	286	229
■ Total Listings	1363	1475	1507	1404	1371	1344	1231	1298	1305	1370	1263	1117	1193

Washington County Single Family Residential Home Sales by Year

According to the Washington Board of Realtors & does not include Outside Area Numbers.
Also does not include Condo, Townhouse, Modular, Manufactured, Mobile or New Construction.

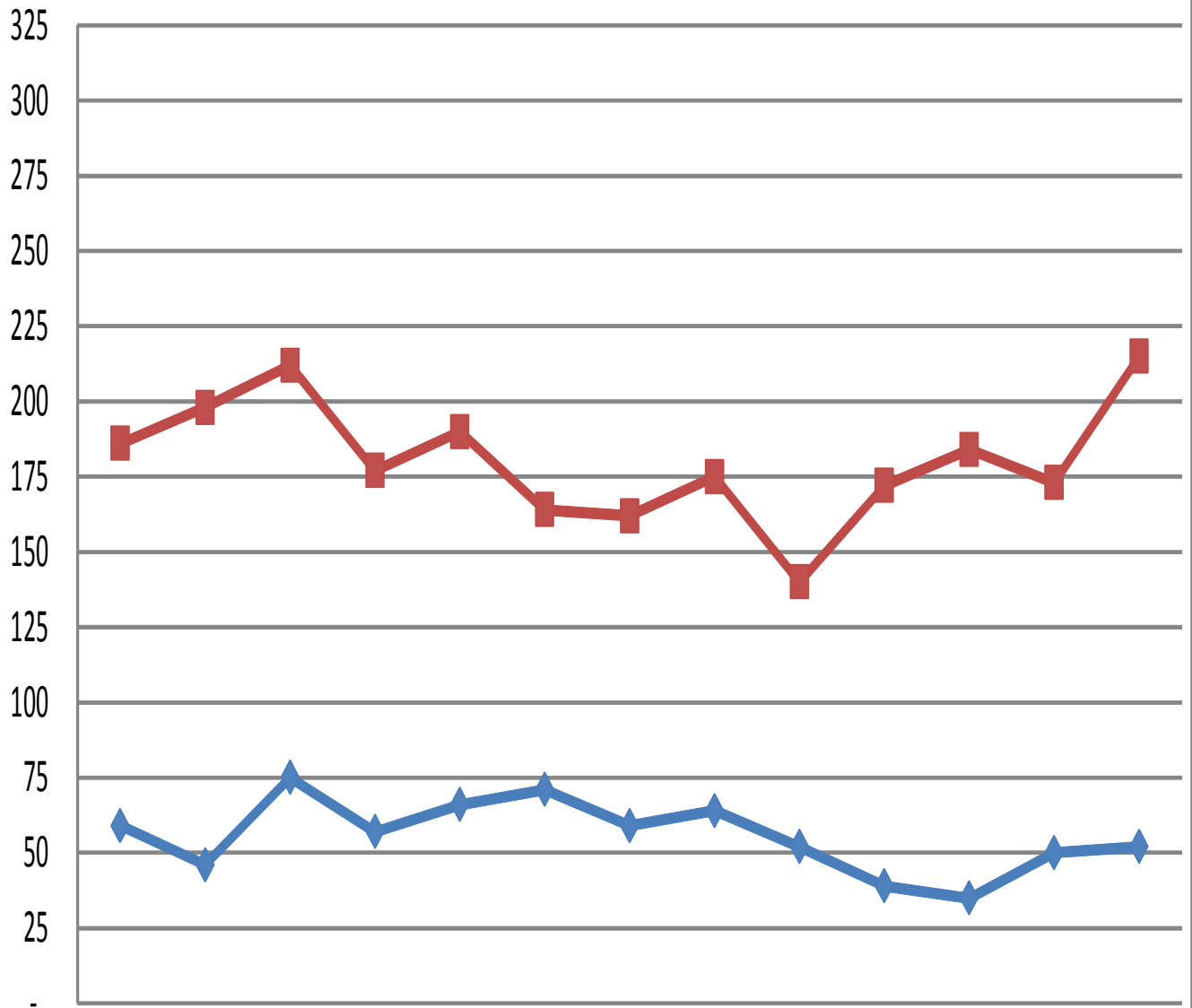


Home sales by year

	Jan	Feb	Mar	Apr	May	Jun	Jul	Aug	Sep	Oct	Nov	Dec
2018	229											
2017	187	221	355	302	360	314	298	308	247	294	295	286
2016	165	190	305	278	322	347	290	312	261	259	273	277
2015	173	190	255	262	291	302	279	238	239	222	192	223
2014	148	184	222	214	264	235	209	201	220	256	198	227
2013	159	173	249	224	297	257	235	265	232	195	192	190
2012	129	181	206	191	233	209	190	197	169	184	185	181
2011	157	161	218	228	213	265	190	201	218	204	190	186
2010	101	176	223	221	209	224	167	194	157	141	178	182
2009	84	115	144	184	182	197	215	155	170	190	168	179
2008	78	97	131	136	153	155	122	143	129	126	105	109
2007	150	121	201	171	195	188	145	158	100	104	129	106
2006	159	166	185	178	194	199	192	187	168	172	152	164
2005	174	159	202	263	270	239	220	298	257	209	213	167
2004	118	133	202	201	240	251	238	237	218	211	219	218

Washington County Condo/Townhouse Sales & Listings

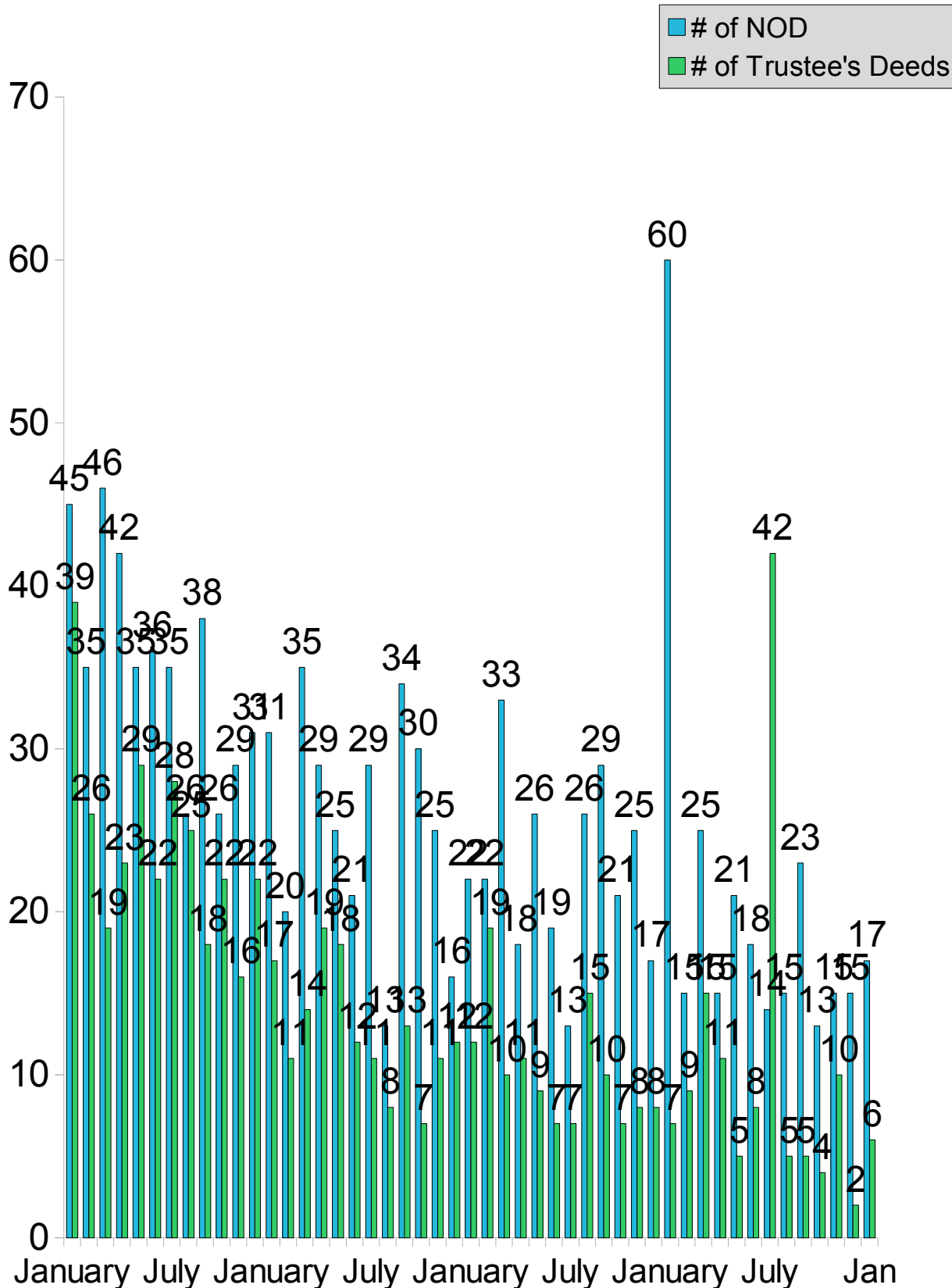
According to the Washington Board of Realtors & does not include Outside Area Numbers.



	Jan-17	Feb-17	Mar-17	Apr-17	May-17	Jun-17	Jul-17	Aug-17	Sep-17	Oct-17	Nov-17	Dec-17	Jan-18
◆ Condo/Townhome Sold	59	46	75	57	66	71	59	64	52	39	35	50	52
■ Condo/Townhome Listings	186	198	212	177	190	164	162	175	140	172	184	173	215

Washington County Notice of Defaults & Trustee's Deeds Per Month

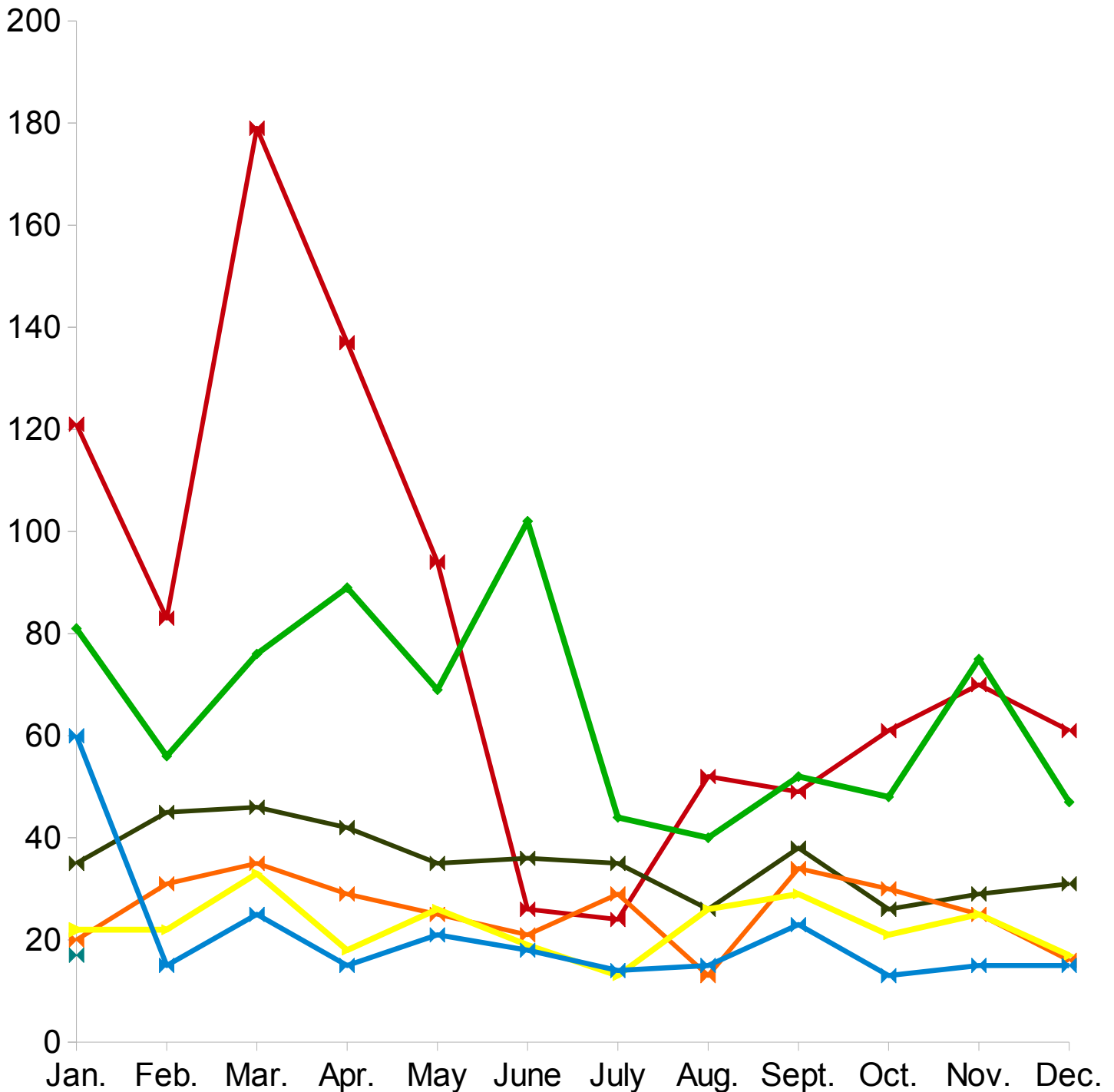
From Jan. 1, 2014 to Jan 31, 2018 according to Washington County Records as researched by Invest Title Services, Inc.



Washington County Notice of Defaults by Year

From Jan. 1, 2012 to Jan 31, 2018 according to Washington County Records as researched by Invest Title Services, Inc.

✕ 2012 NOD's
 ◆ 2013 NOD's
 ✕ 2014 NOD's
 ✕ 2015 NOD's
 Linear (2015 NOD's)
 ▶ 2016 NOD's
 ✕ 2017 NOD's



Southwestern Utah Building Permit Summary

From Jan. 1, 2018 to Feb 14, 2018 (permits over \$10,000) according to
The Southwestern Utah Construction Monitor

<i>Residential</i>	<i>Permits</i>	<i>Value</i>	<i>Units</i>
Single Family Homes	297	\$60,433,879	297
Other	156	\$11,932,873	63
Total	453	\$72,366,752	360

<i>Commercial</i>	<i>Permits</i>	<i>Value</i>	<i>Units</i>
Offices/Banks/R&D Professional	1	\$222,000	0
Retail/Dining/Personal Care	1	\$750,000	0
Public Buildings & Projects	0	\$0	0
Other	36	\$7,228,594	0
Total	38	\$8,200,594	0

Top 25 Southwestern Utah Home Builders

From Jan. 1, 2018 to Jan 31, 2018 according to The
Southwestern Utah Construction Monitor

1-Ence Homes	17	\$3,189,657.00
2- Salisbury Homes	19	\$3,127,351.00
3-Jack Fisher Const of Southern Utah	17	\$3,004,677.00
4-Ivory Homes	11	\$2,386,918.00
5-Dan Hoopes Construction Inc	7	\$1,284,879.00
6- Perry Homes	7	\$1,161,584.00
7-American Heritage Homes	5	\$877,082.00
8-Sullivan Homes	6	\$857,000.00
9-Sun River Construction	7	\$833,000.00
10-AJ Construction	3	\$830,000.00
11-New Trend Construction	3	\$716,102.00
12-Taylor Built Homes	2	\$500,000.00
13-Interstate Homes	2	\$472,354.00
14-Hardcastle Homes	1	\$454,173.00
15-Grass Creek Construction	2	\$444,272.00
16-Coral Canyon Builders	2	\$438,796.00
17- Webb Custom Homes	1	\$435,000.00
18-K Welch Construction	1	\$415,000.00
19-Jeff Sweaney Construction	2	\$411,009.00
20-Immaculate Construction	2	\$410,000.00
21 - Brent Baxter Construction	1	\$409,802.00
22-BR Homes LLC	2	\$405,000.00
23-State Ridge Homes	1	\$387,923.00
24-Sun Hill Development	2	\$384,000.00
25-Irongate Builders	1	\$735,393.00

Subdivided Lots

From Jan 1, 2018 to Jan 31, 2018 according to Washington
County Realtors Assoc.

<i>Area</i>	<i># Sold</i>	<i>Avg. Sale Price</i>	<i>Total Active</i>	<i>Days On Market</i>
Greater St. George	22	\$213,827.00	492	240
Hurricane Valley	13	\$74,638.00	150	190
Zion Park	2	\$53,000.00	49	384
Northwest County	4	\$82,500.00	51	324
Northeast County	1	\$53,000.00	18	216
Outside County	5	\$23,200.00	254	249

From Jan. 1, 2017 to Dec 31, 2017 according to Washington
County Realtors Assoc.

<i>Area</i>	<i># Sold</i>	<i>Avg. Sale Price</i>	<i>Total Active</i>	<i>Days On Market</i>
Greater St. George	336	\$140,170.00	1242	243
Hurricane Valley	125	\$68,735.00	405	164
Zion Park	23	\$69,508.00	149	211
Northwest County	36	\$73,492.00	114	263
Northeast County	28	\$81,779.00	74	251
Outside County	123	\$36,280.00	565	244

The data, charts, and graphs are for informational purposes only. Inwest Title Services, Inc. makes no representations that the information contained herein is complete, accurate or applicable to your individual circumstances.

Land/Acreage Sold

From Jan 1, 2018 to Jan 31, 2018 according to Washington
County Realtors Assoc.

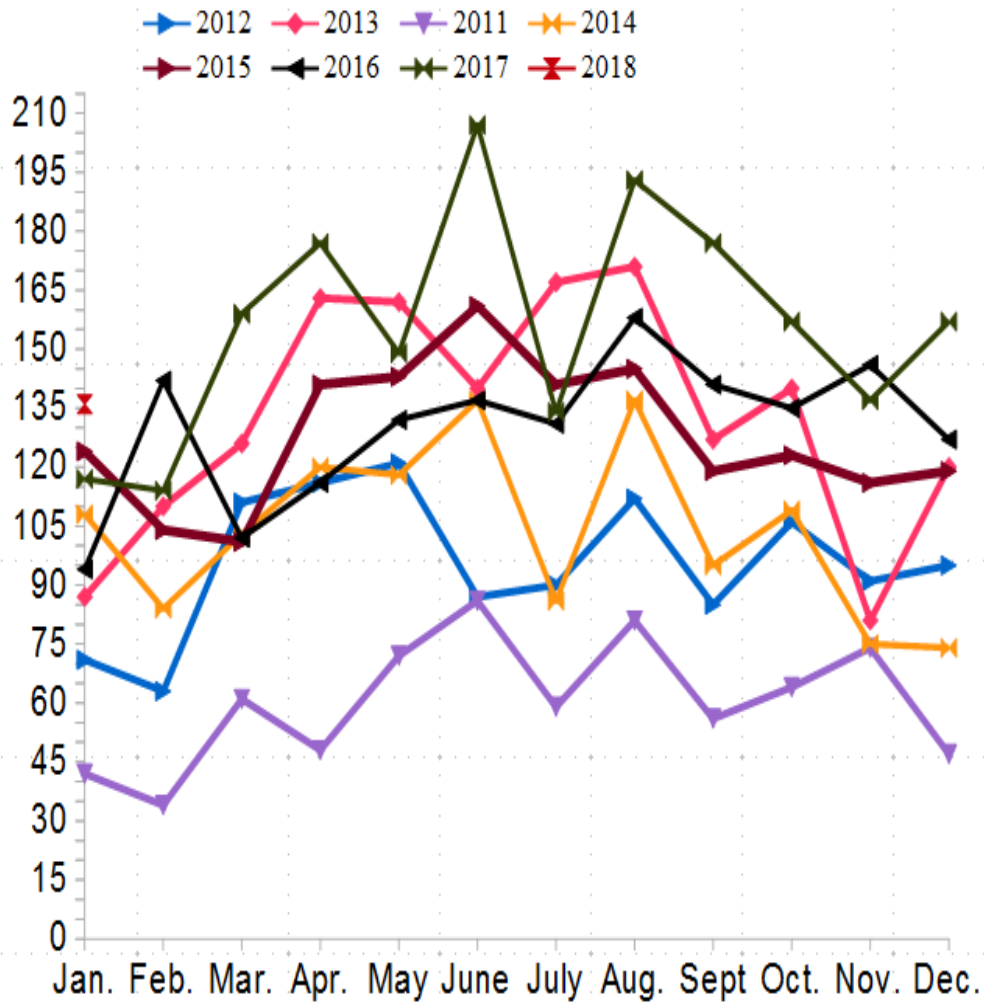
<i>Area</i>	<i># Sold</i>	<i>Avg. Sale Price</i>	<i>Total Active</i>	<i>Days On Market</i>
Greater St. George	5	\$434,530.00	102	393
Hurricane Valley	4	\$145,500.00	52	317
Zion Park	1	\$375,000.00	31	645
Northwest County	3	\$79,667.00	49	443
Northeast County	2	\$109,900.00	34	360
Outside County	10	\$80,800.00	320	511

From Jan. 1, 2017 to Dec 31, 2017 according to Washington
County Realtors Assoc.

<i>Area</i>	<i># Sold</i>	<i>Avg. Sale Price</i>	<i>Total Active</i>	<i>Days On Market</i>
Greater St. George	60	\$206,080.00	235	254
Hurricane Valley	53	\$146,973.00	172	232
Zion Park	9	\$259,978.00	55	318
Northwest County	15	\$36,740.00	99	267
Northeast County	16	\$154,975.00	61	232
Outside County	105	\$74,782.00	698	324

The data, charts, and graphs are for informational purposes only. Inwest Title Services, Inc. makes no representations that the information contained herein is complete, accurate or applicable to your individual circumstances.

Single Family Home Permits for Washington County per the Southwest Utah Construction Monitor



	2012	2013	2011	2014	2015	2016	2017	2018
Categories	Y-Values	Y-Values	Y-Values	Y-Values	Y-Values	Y-Values	Y-Values	Y-Values
Jan.	71	87	42	108	124	94	117	136
Feb.	63	110	34	84	104	142	114	
Mar.	111	126	61	103	101	102	159	
Apr.	116	163	48	120	141	116	177	
May	121	162	72	118	143	132	149	
June	87	140	86	137	161	137	207	
July	90	167	59	86	141	131	134	
Aug.	112	171	81	137	145	158	193	
Sept.	85	127	56	95	119	141	177	
Oct.	106	140	64	109	123	135	157	
Nov.	91	81	74	75	116	146	137	
Dec.	95	120	47	74	119	127	157	