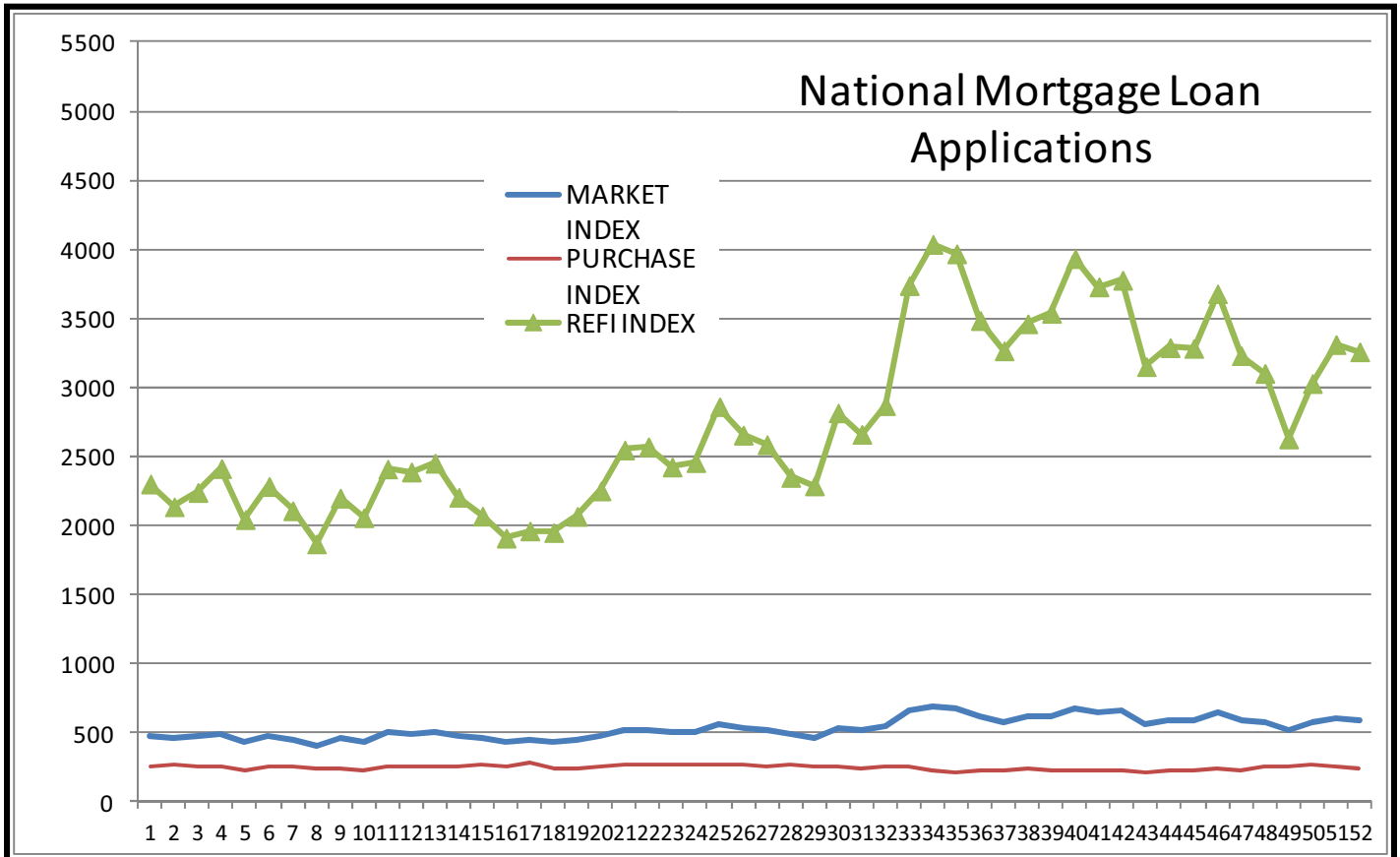
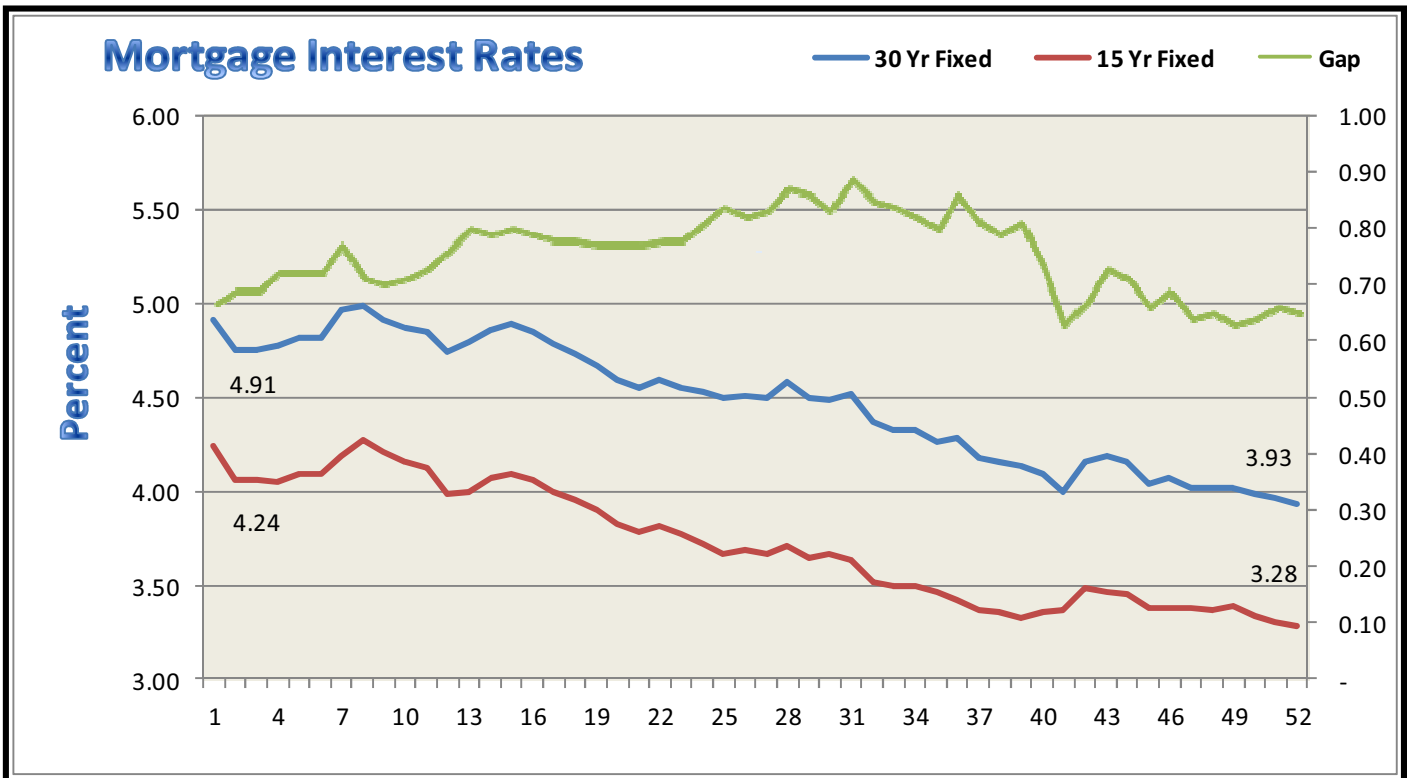


# INWEST TITLE SERVICES

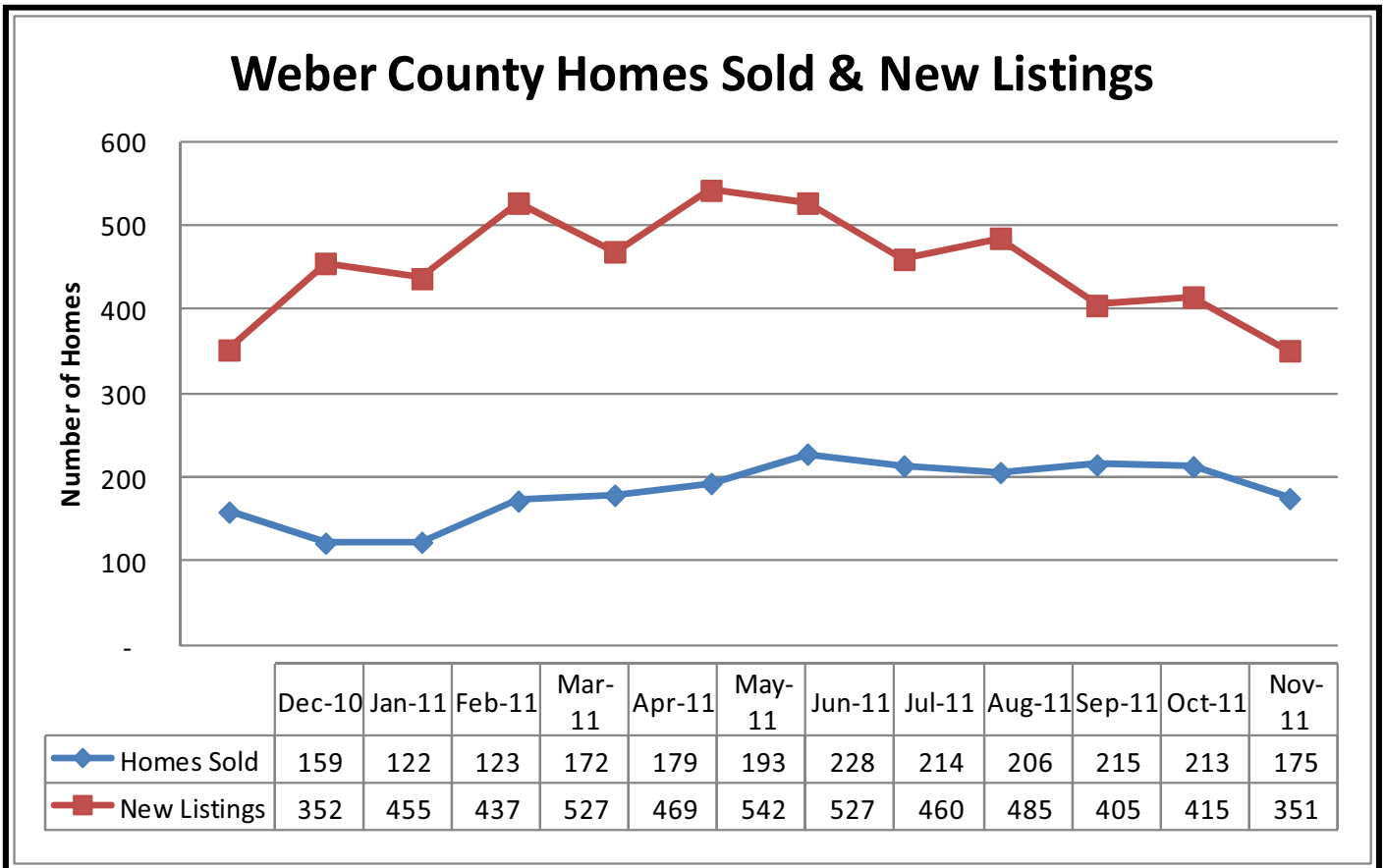
<b>South Ogden</b>	<b>801 475-4410</b>	<b>Layton</b>	<b>801 773-9806</b>
<b>Salt Lake</b>	<b>801 264-0700</b>	<b>Tooele</b>	<b>435 882-5510</b>
<b>Orem State St.</b>	<b>801 932-1013</b>	<b>Spanish Fork</b>	<b>801 201-2848</b>
<b>Park City</b>	<b>435 649-6655</b>	<b>Cedar City</b>	<b>435 586-5601</b>
<b>St. George</b>	<b>435 634-5080</b>	<b>Bountiful</b>	<b>801 296-2611</b>
<b>West Haven (Corporate offices) 2037 West Commerce Way, Ogden, UT 84401 801 399-3544</b>			



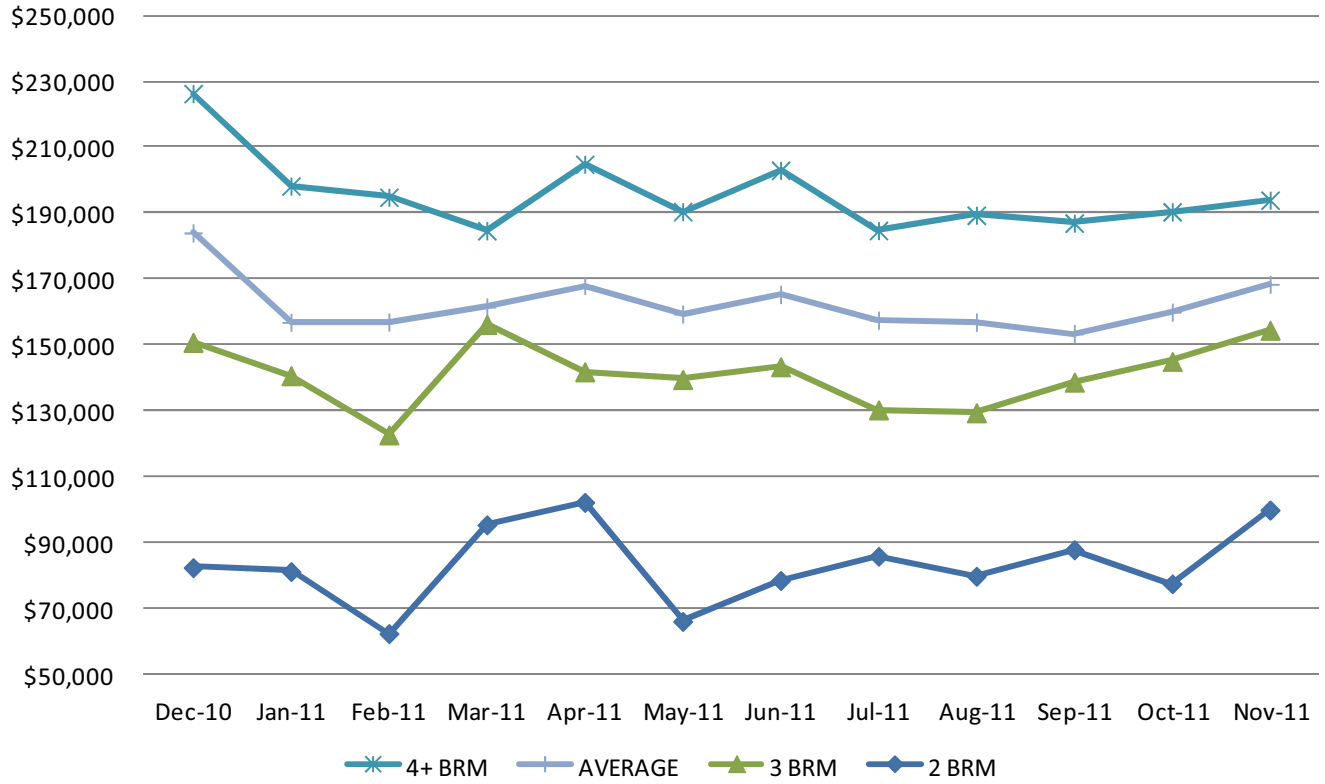
Seasonally adjusted indices from the Mortgage Bankers Association of America (MBA) shows the major loan application indices for the past 52 weeks. For the week ending December 16, 2011 the indices decreased an average of -3.03%. The Refi Index decreased -1.6%, the Market Index decreased -2.6%, and the Purchase Index decreased -4.9%. For more information go to [www.mortgagebankers.org](http://www.mortgagebankers.org).



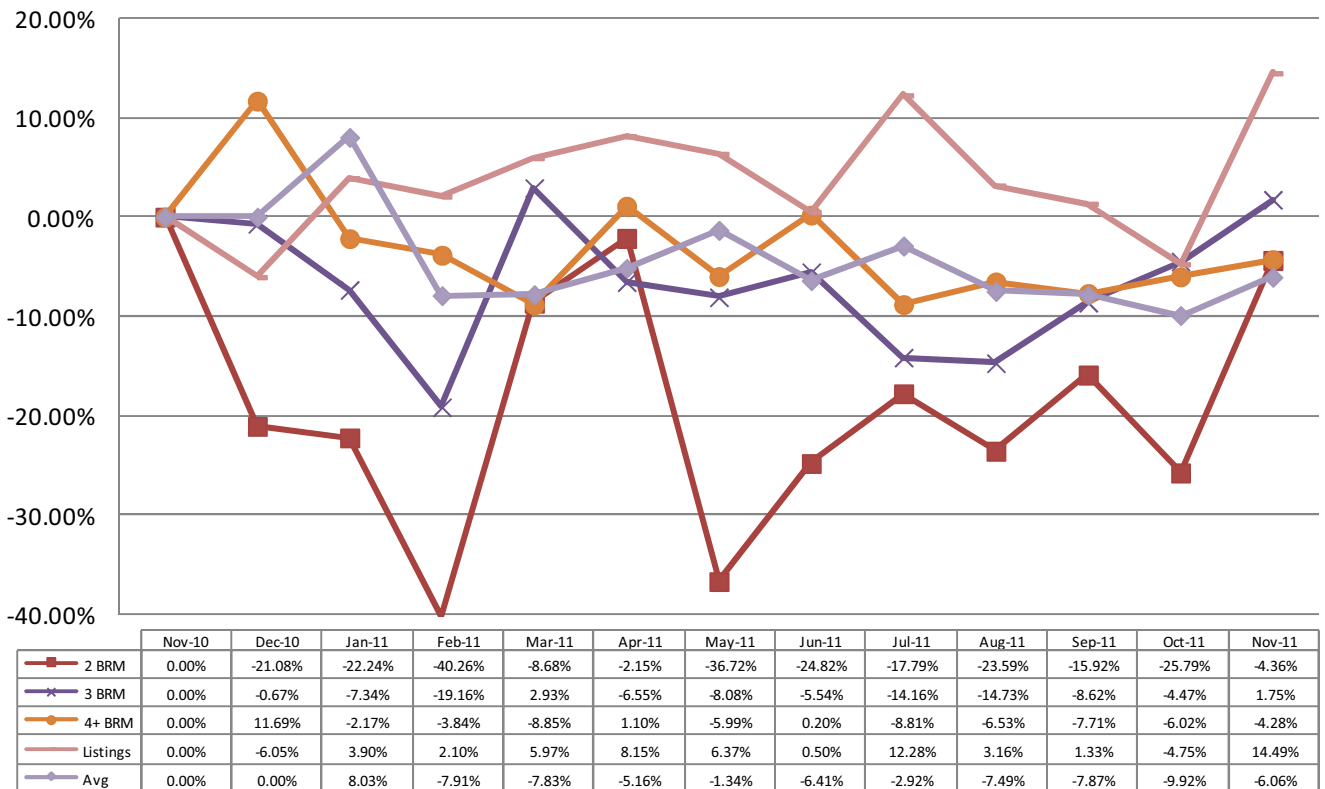
The Bankrate.com average mortgage interest rates are 3.93% and 3.28% for 30 year and 15 year mortgages, respectively.  
 Freddie Mac reports mortgage rates from its weekly survey at 3.91% for a 30 year mortgage, 3.21% for the 15 year mortgage, and 2.77% for the 1-Yr. ARM.

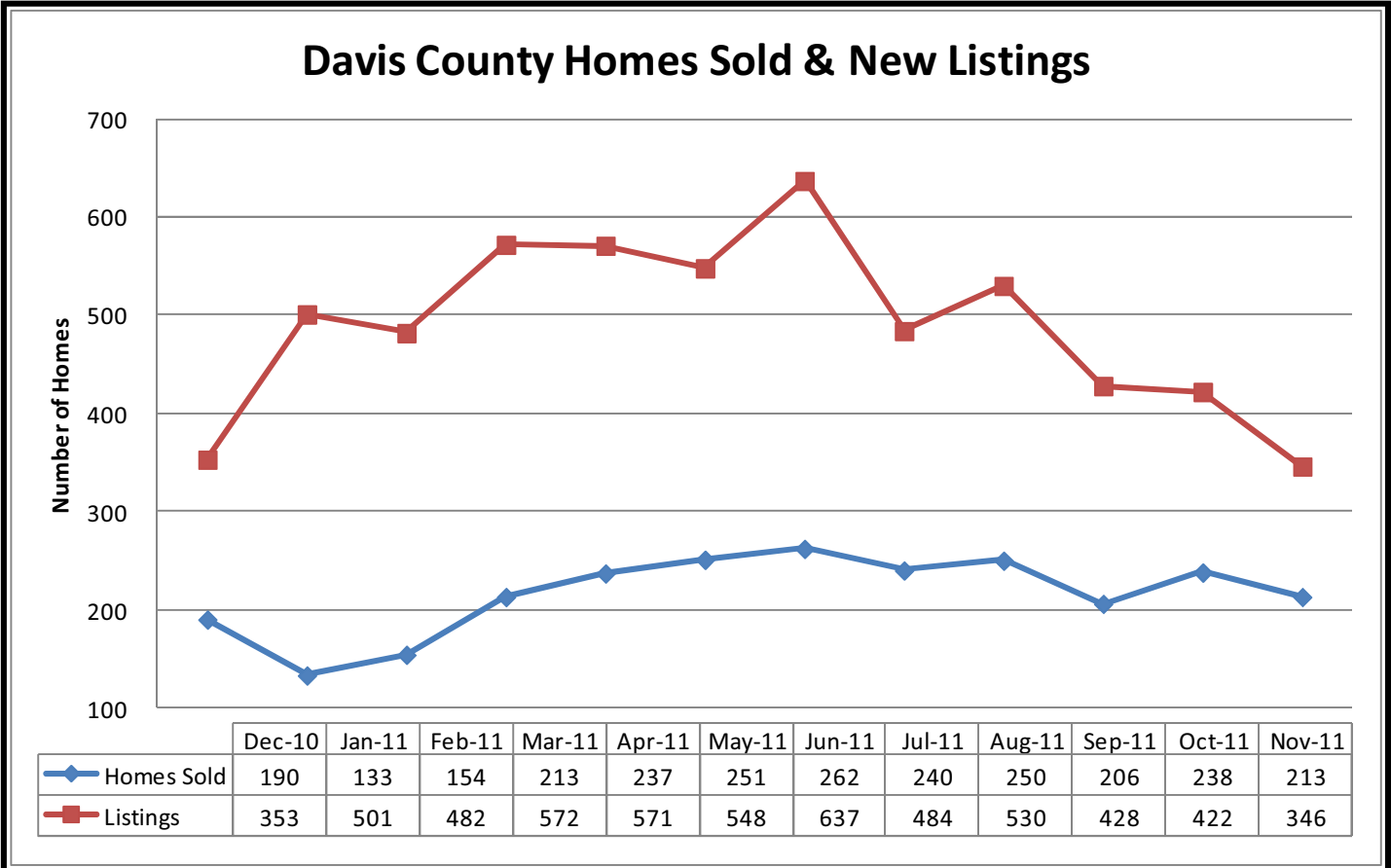
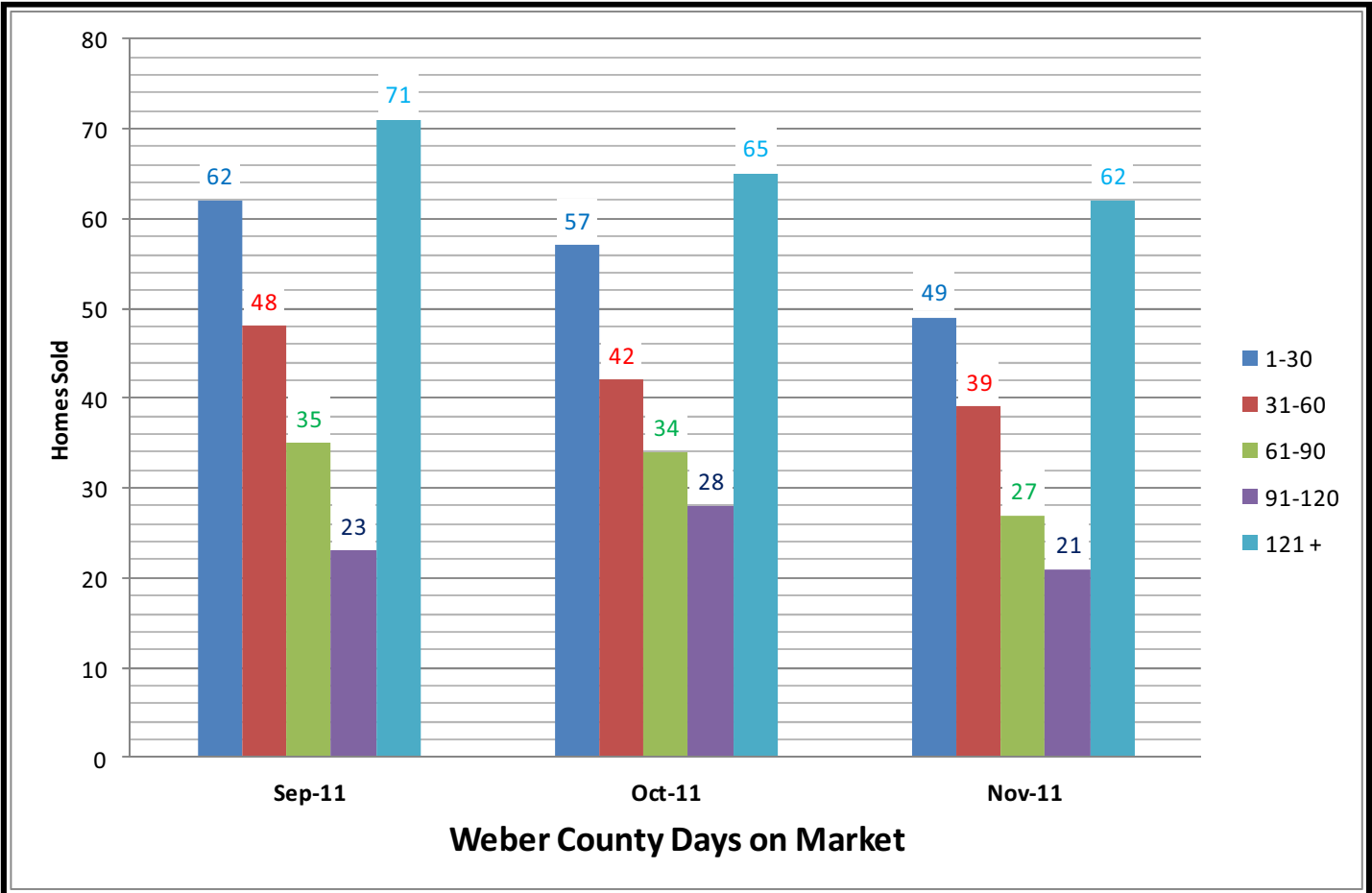


### Weber County Average Sales Price

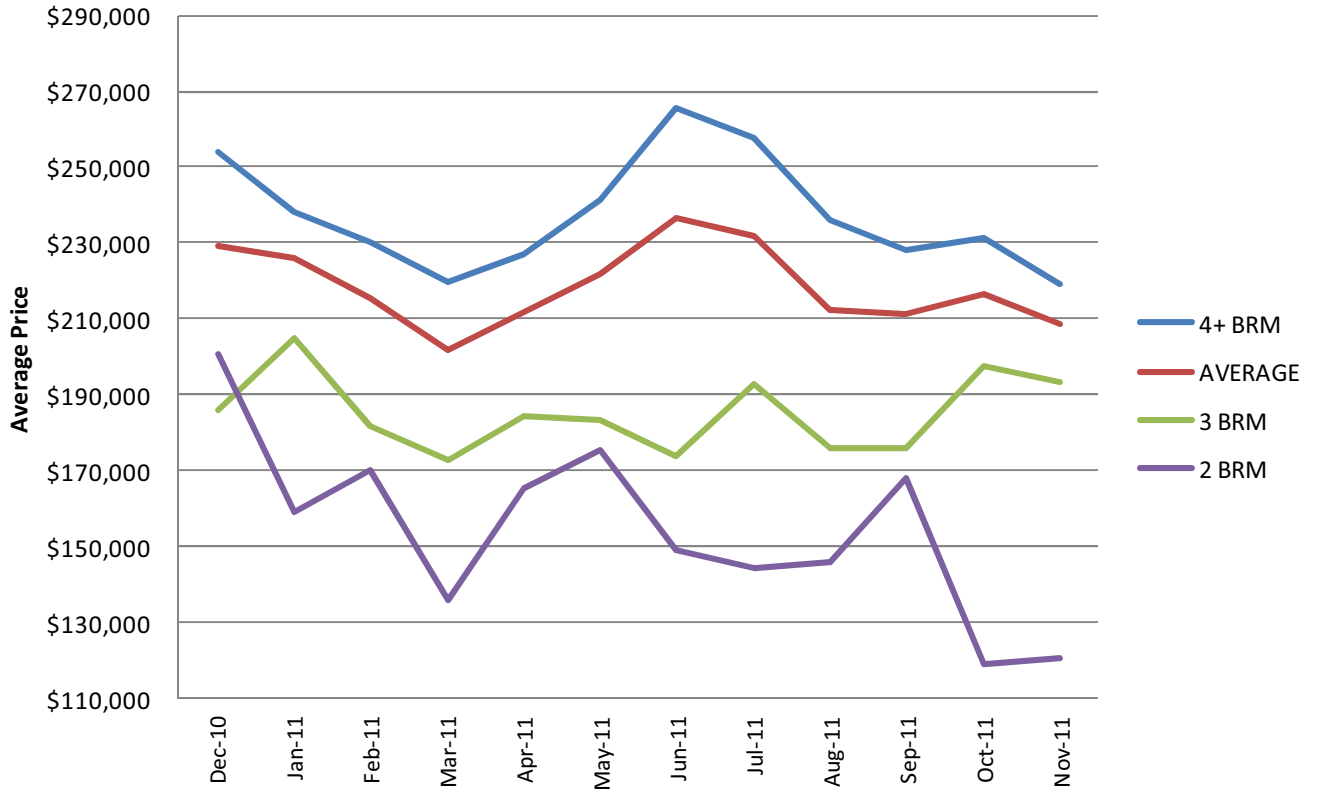


### Weber County Percent Increase - Sales Price

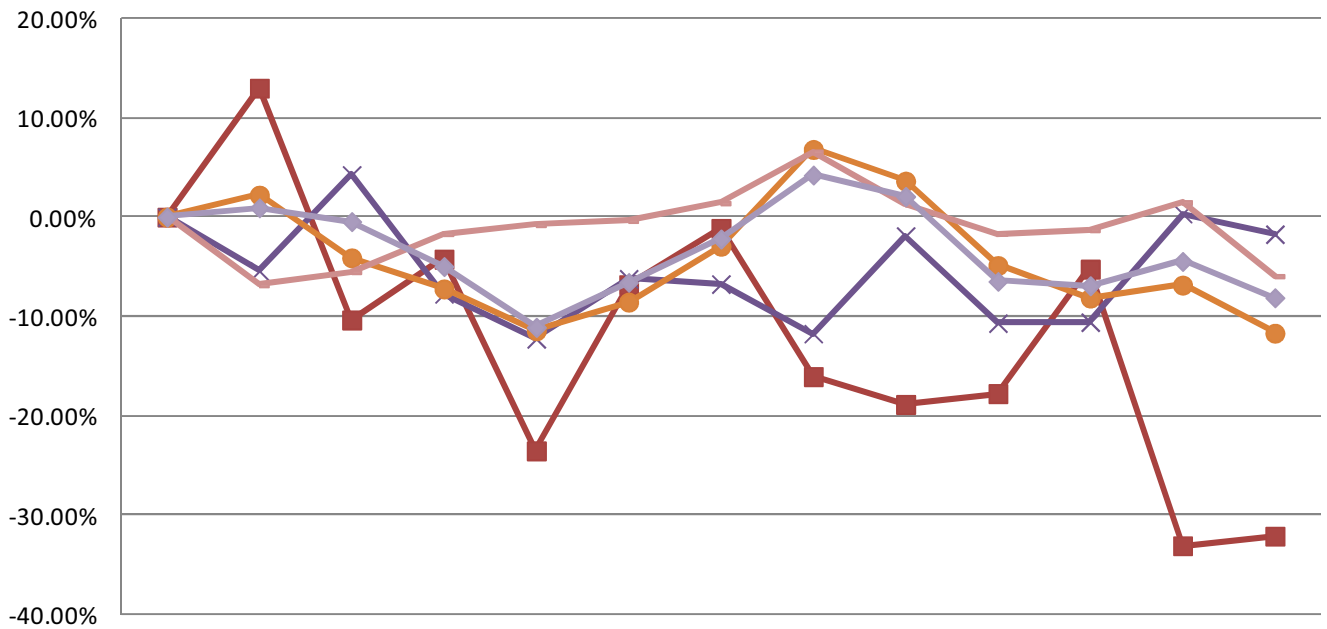




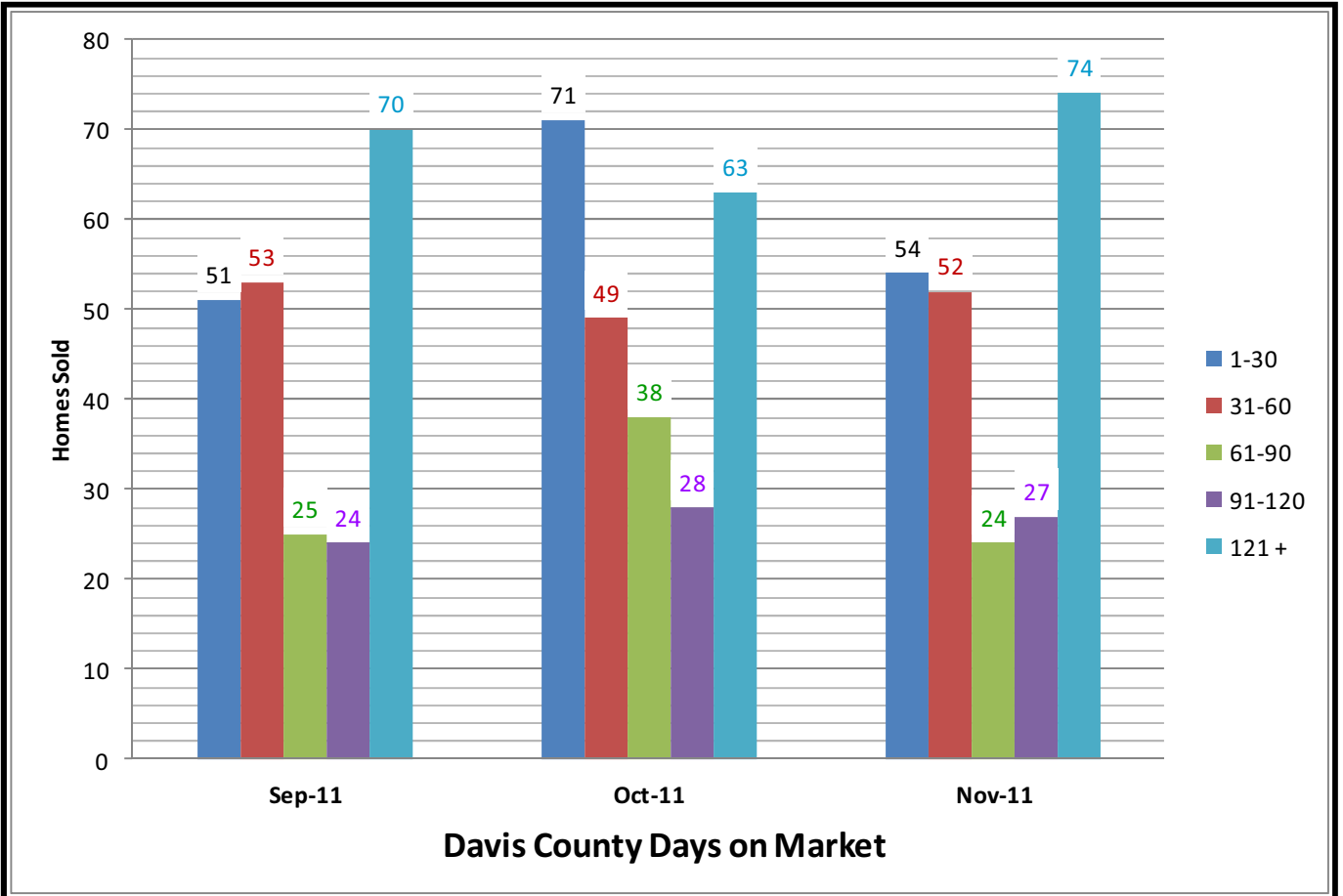
### Davis County Average Sales Price



### Davis County Percent Increase - Sales Price



	Nov-10	Dec-10	Jan-11	Feb-11	Mar-11	Apr-11	May-11	Jun-11	Jul-11	Aug-11	Sep-11	Oct-11	Nov-11
2 BRM	0.00%	13.00%	-10.36%	-4.24%	-23.55%	-6.80%	-1.13%	-16.07%	-18.88%	-17.78%	-5.24%	-33.12%	-32.15%
3 BRM	0.00%	-5.42%	4.26%	-7.74%	-12.26%	-6.21%	-6.75%	-11.74%	-1.90%	-10.69%	-10.59%	0.36%	-1.72%
4+ BRM	0.00%	2.22%	-4.11%	-7.23%	-11.45%	-8.57%	-2.93%	6.82%	3.63%	-4.88%	-8.15%	-6.85%	-11.70%
Listings	0.00%	-6.86%	-5.52%	-1.68%	-0.78%	-0.37%	1.41%	6.60%	1.28%	-1.66%	-1.29%	1.49%	-5.95%
Avg	0.00%	0.94%	-0.45%	-4.98%	-11.11%	-6.57%	-2.20%	4.23%	2.08%	-6.48%	-6.91%	-4.47%	-8.13%

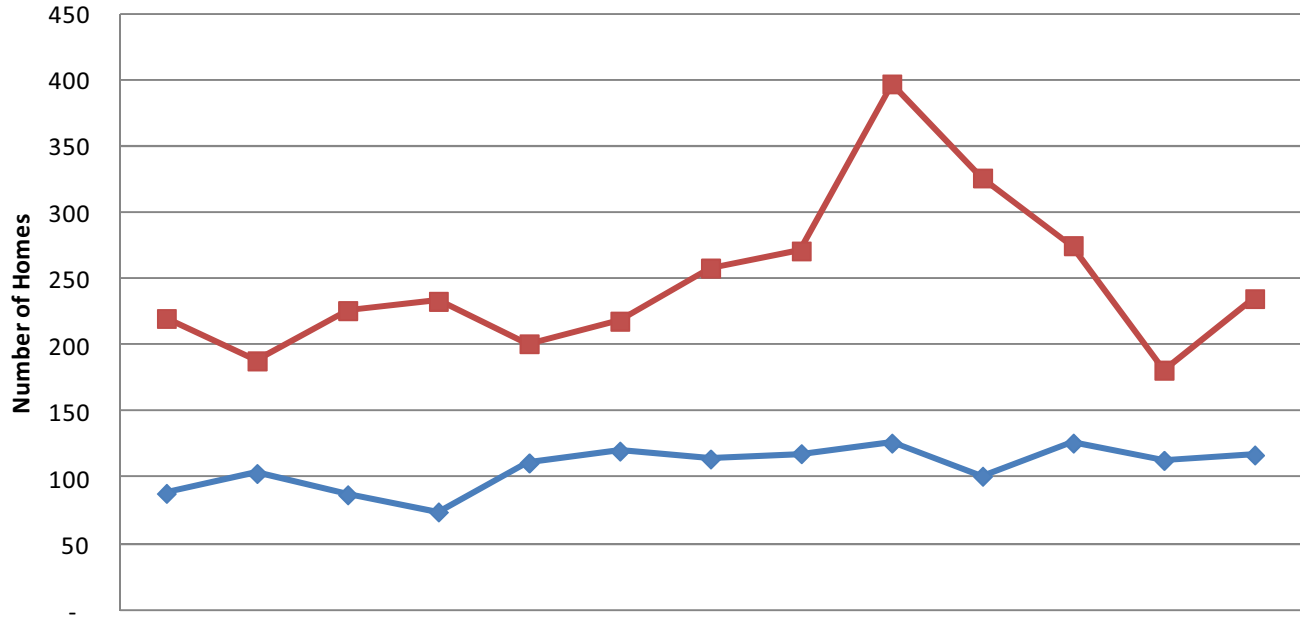


We are still unable to provide the data for Salt Lake County sales. The Salt Lake Board of Realtors (SLB of R) recently changed their web site and the “*Salt Lake County Sales Activity Trend Report*” fell from their web site.

We have been talking with the MLS, who provides the data to the SLB of R web site, and have been unable to have any success.

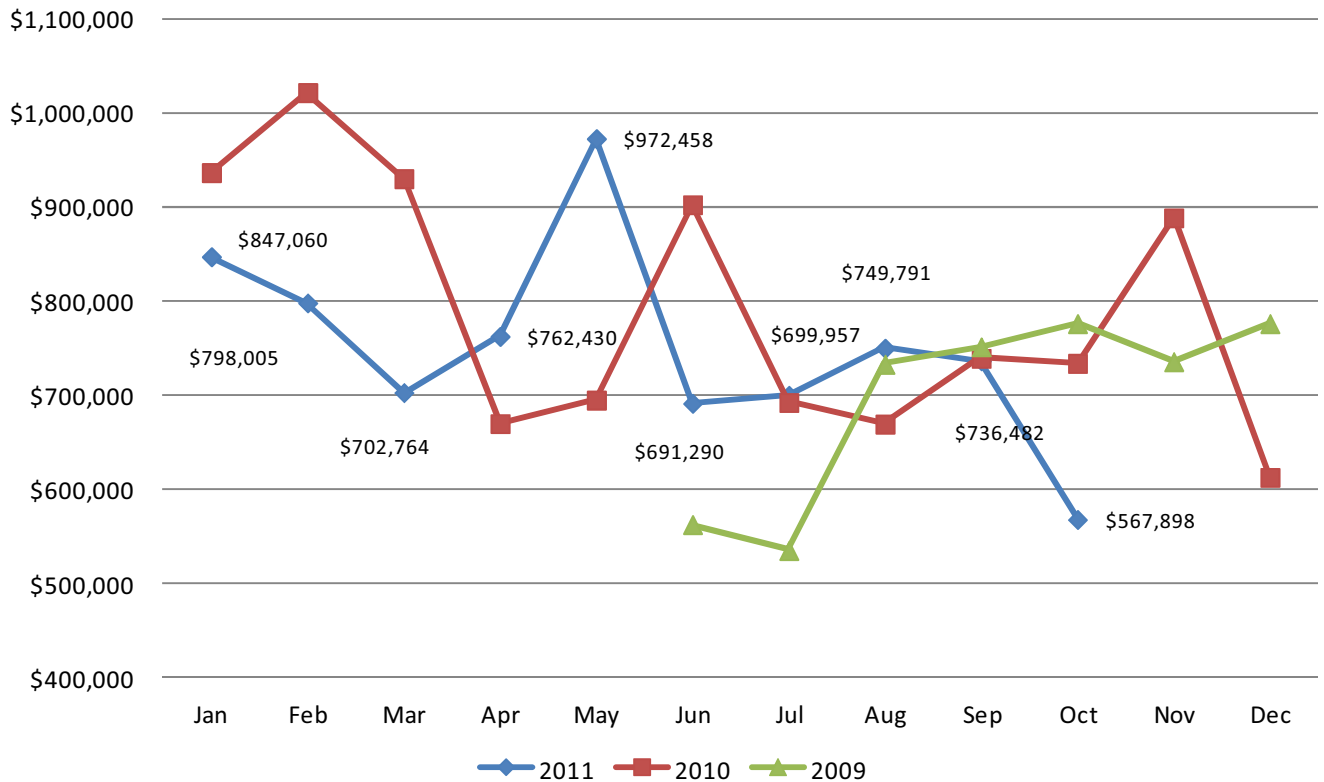
We are extremely sorry that we cannot, at this time, provide the information that has been coming to you since 2004. We hope, by continuing to work with the SLB of R, that the information will be available to you in the very near future.

## Summit County Homes Sold & New Listings

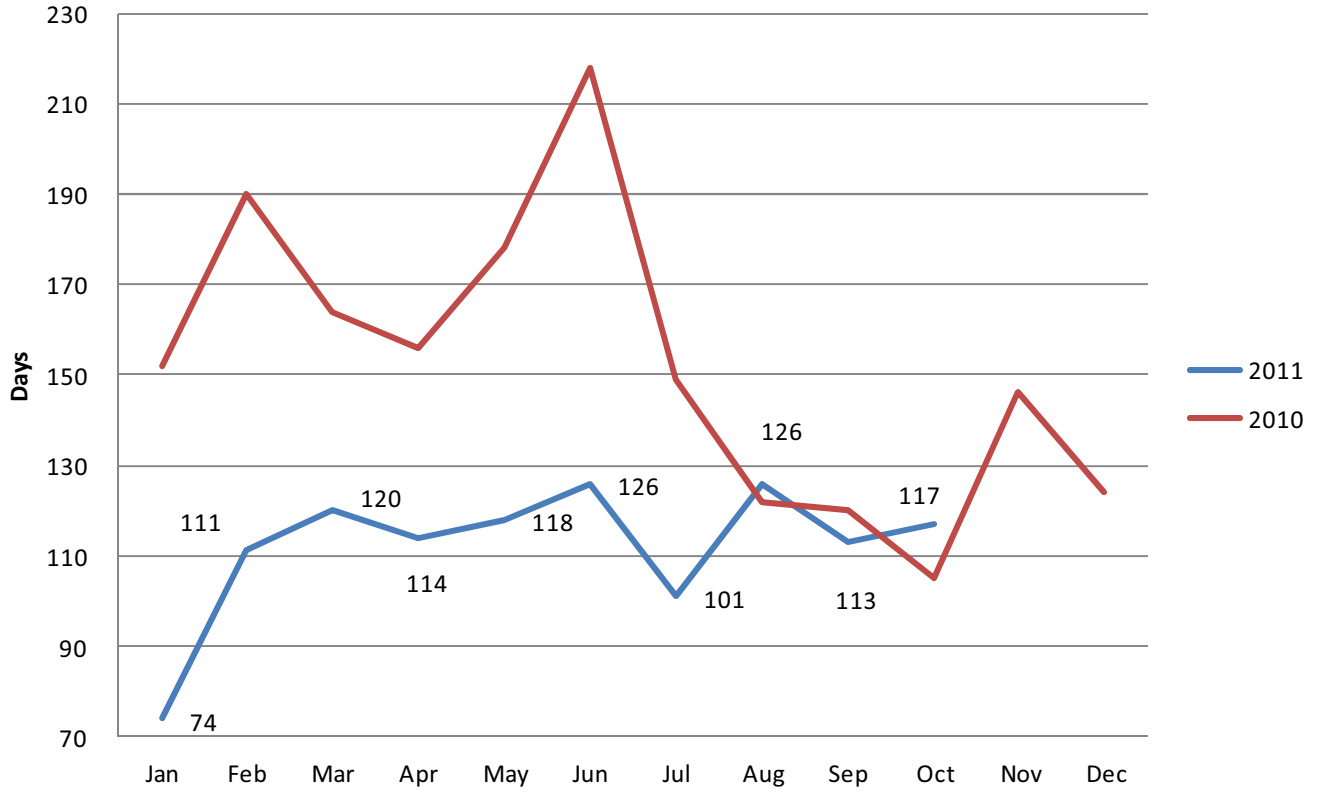


	Oct-10	Nov-10	Dec-10	Jan-11	Feb-11	Mar-11	Apr-11	May-11	Jun-11	Jul-11	Aug-11	Sep-11	Oct-11
Homes Sold	88	103	87	74	111	120	114	118	126	101	126	113	117
New Listings	220	188	226	233	201	218	258	271	397	326	275	181	235

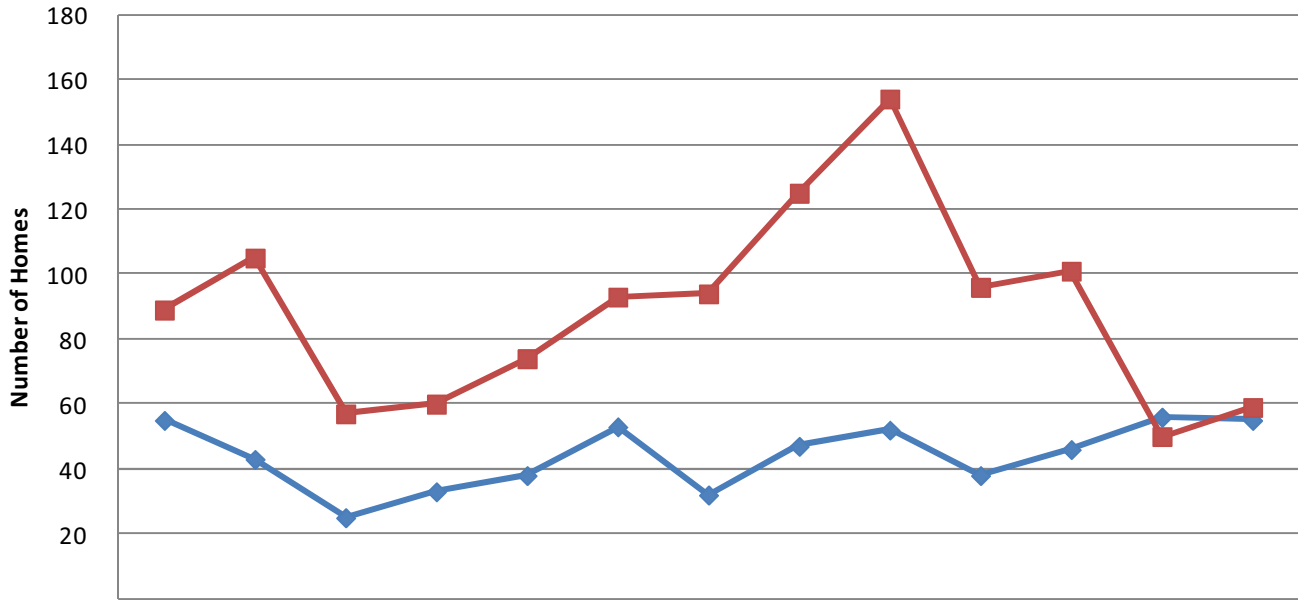
## Summit County Average Sales Price



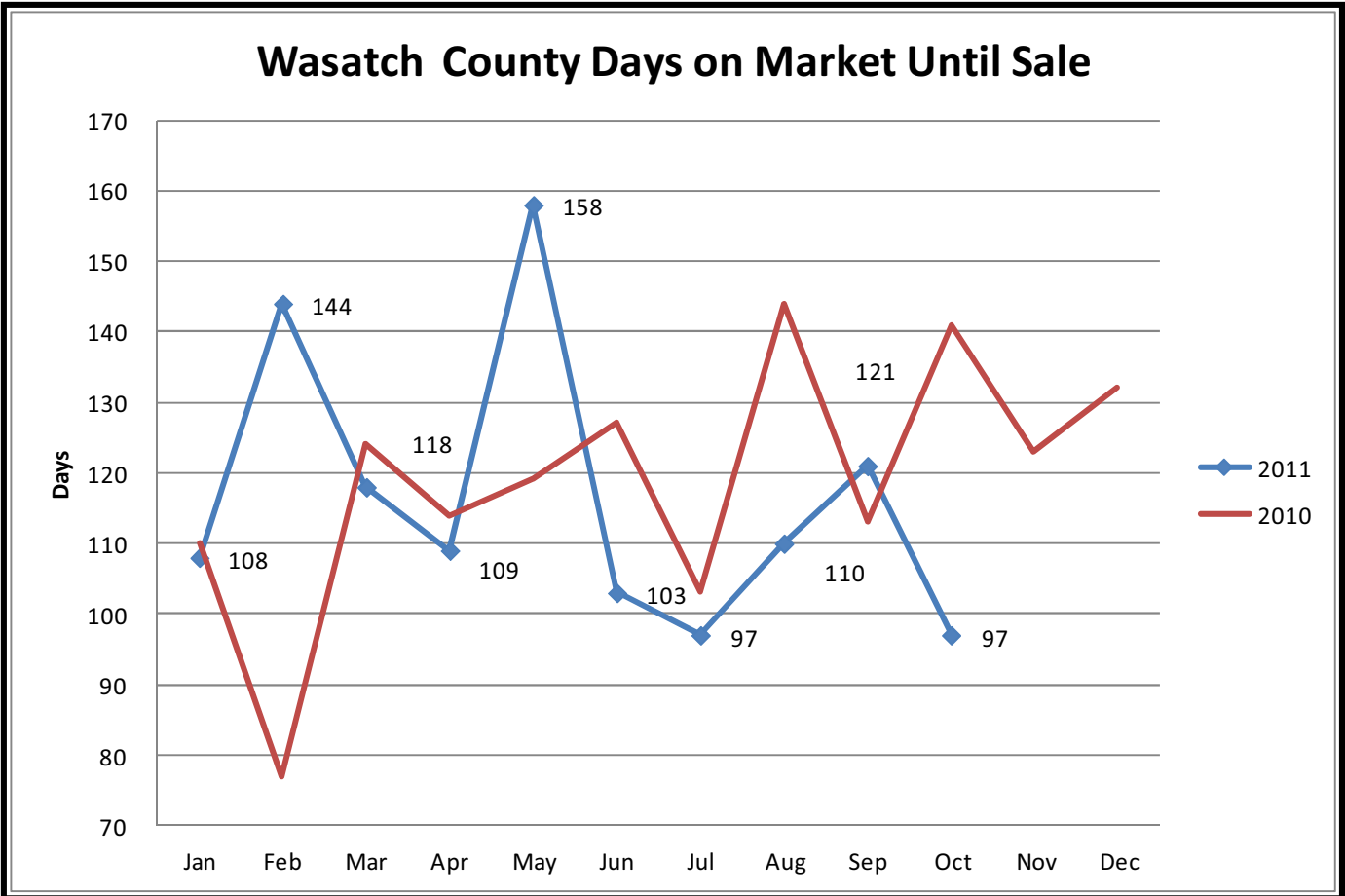
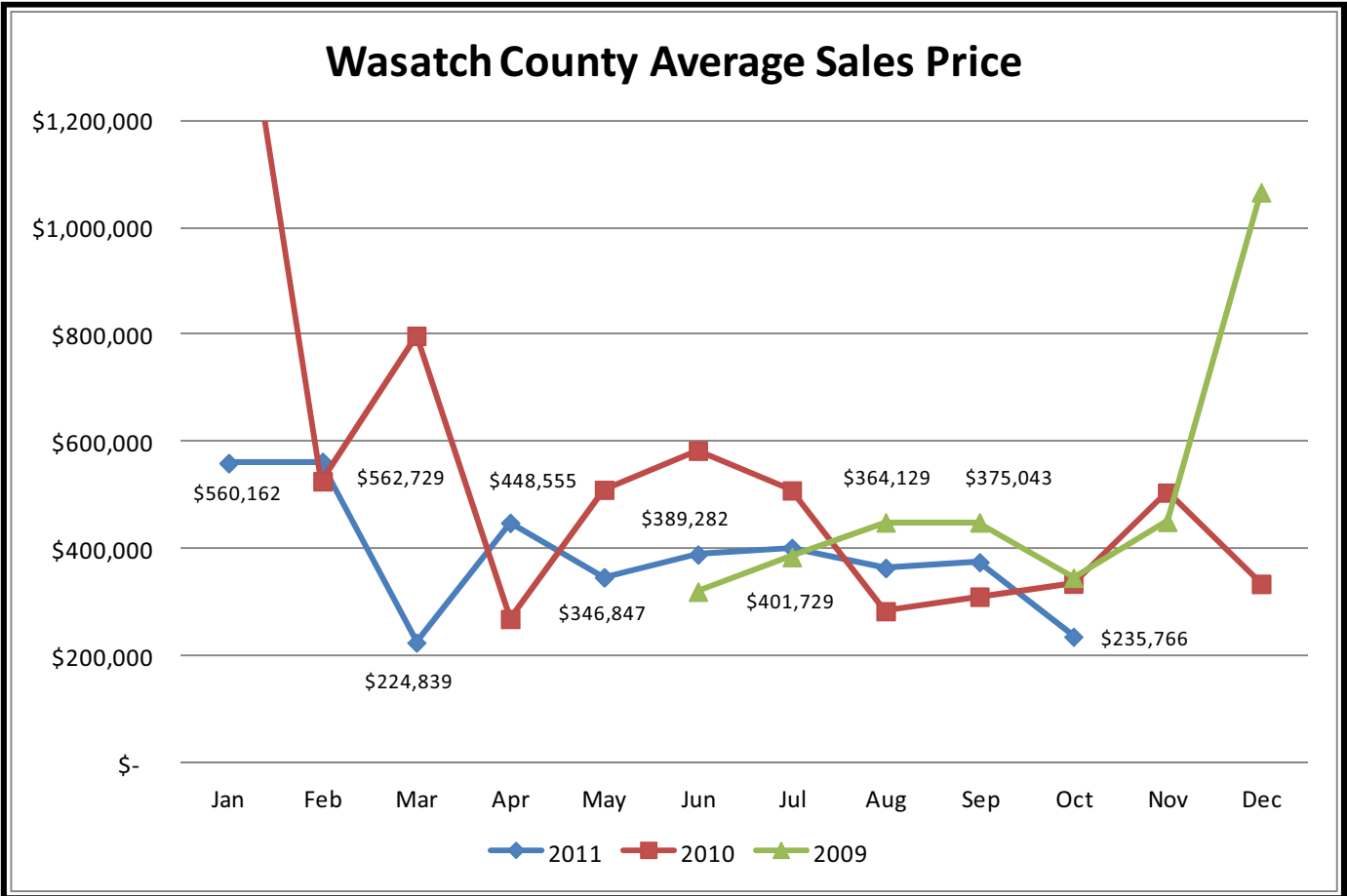
### Summitt County Days on Market Until Sale



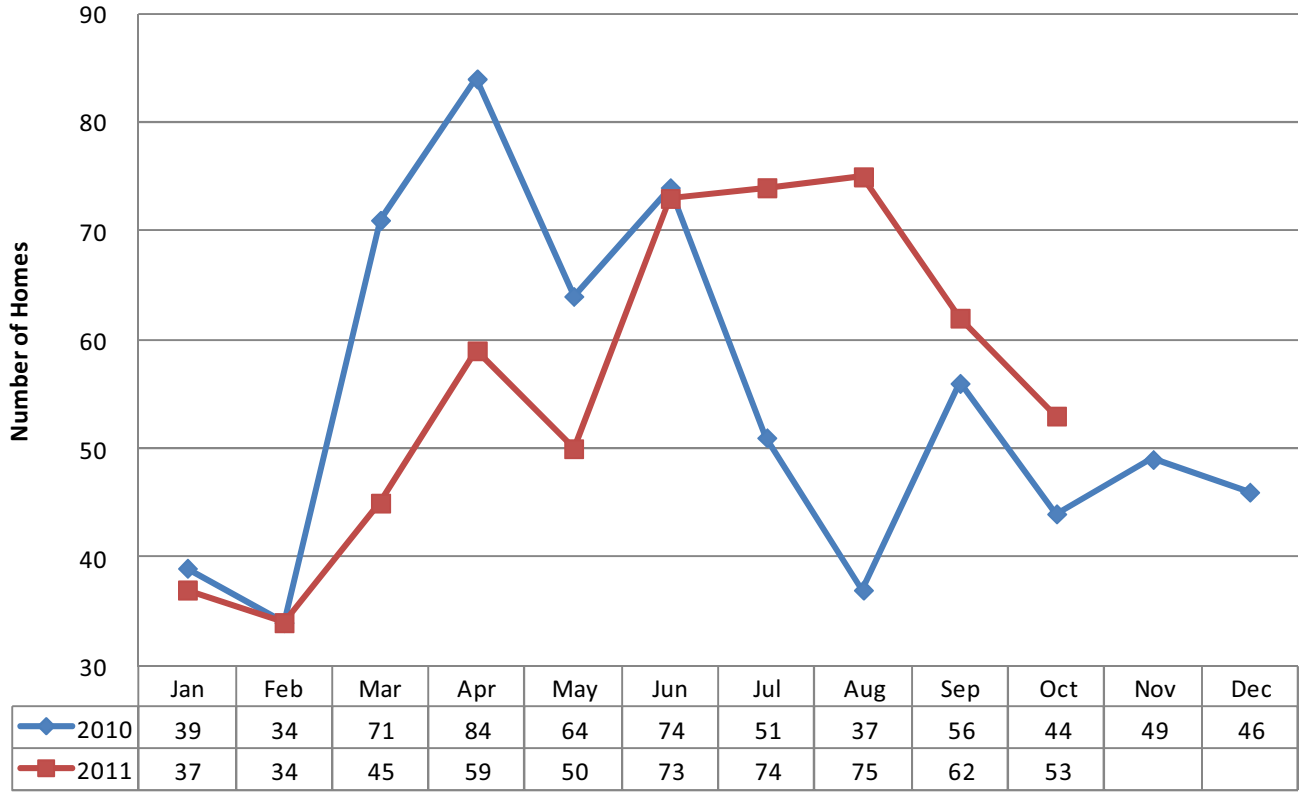
### Wasatch County Homes Sold & New Listings



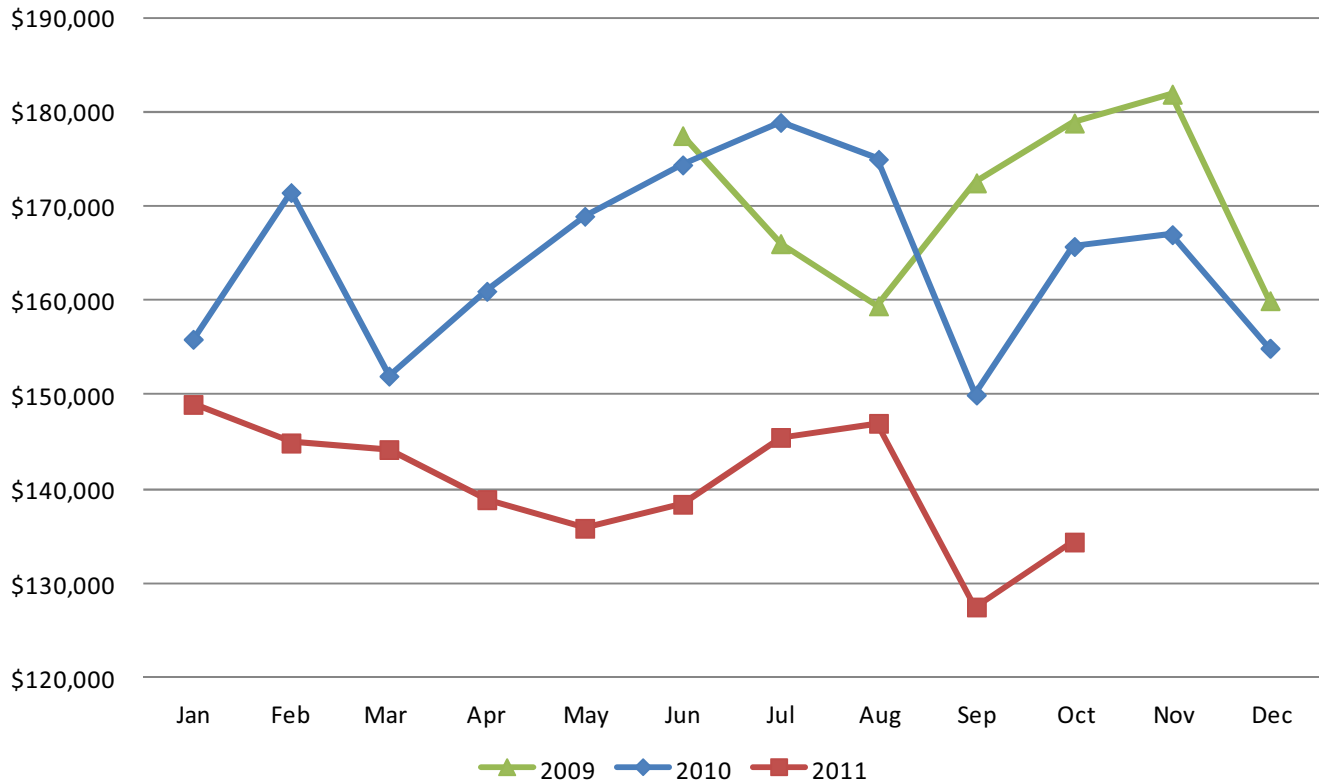
	Oct-10	Nov-10	Dec-10	Jan-11	Feb-11	Mar-11	Apr-11	May-11	Jun-11	Jul-11	Aug-11	Sep-11	Oct-11
◆ Homes Sold	55	43	25	33	38	53	32	47	52	38	46	56	55
■ New Listings	89	105	57	60	74	93	94	125	154	96	101	50	59



### Tooele County Homes Sold



### Tooele County Median Sales Price



**You are receiving this e-mail Market Data Report from Inwest Title Services, Inc. as a means to keep you posted on local, state, and national market trends.**

**It is our pleasure to compile and supply you with this information on a regular basis. If you wish to discontinue receiving this report, please respond with “Unsubscribe” in the Subject Line.**

