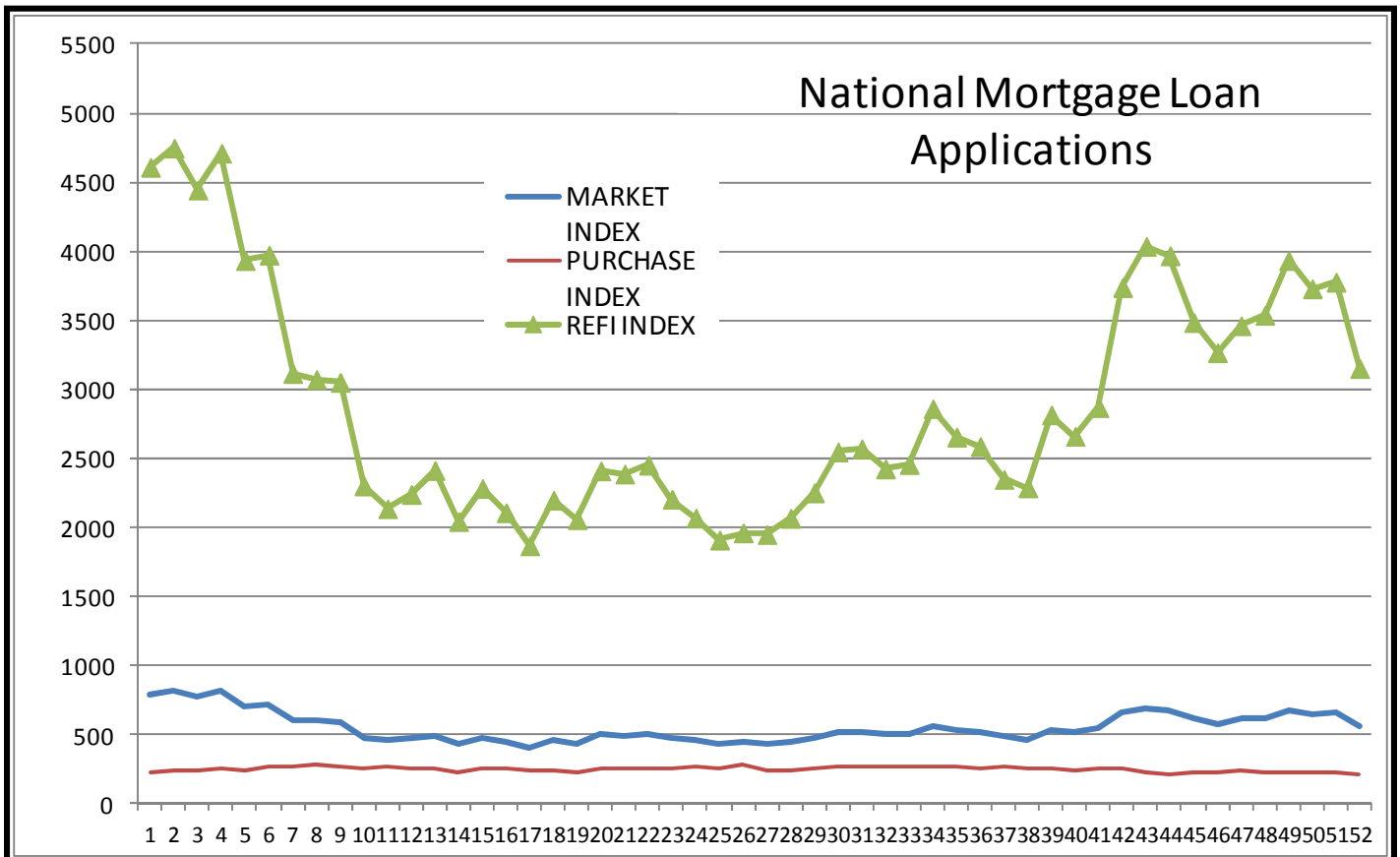
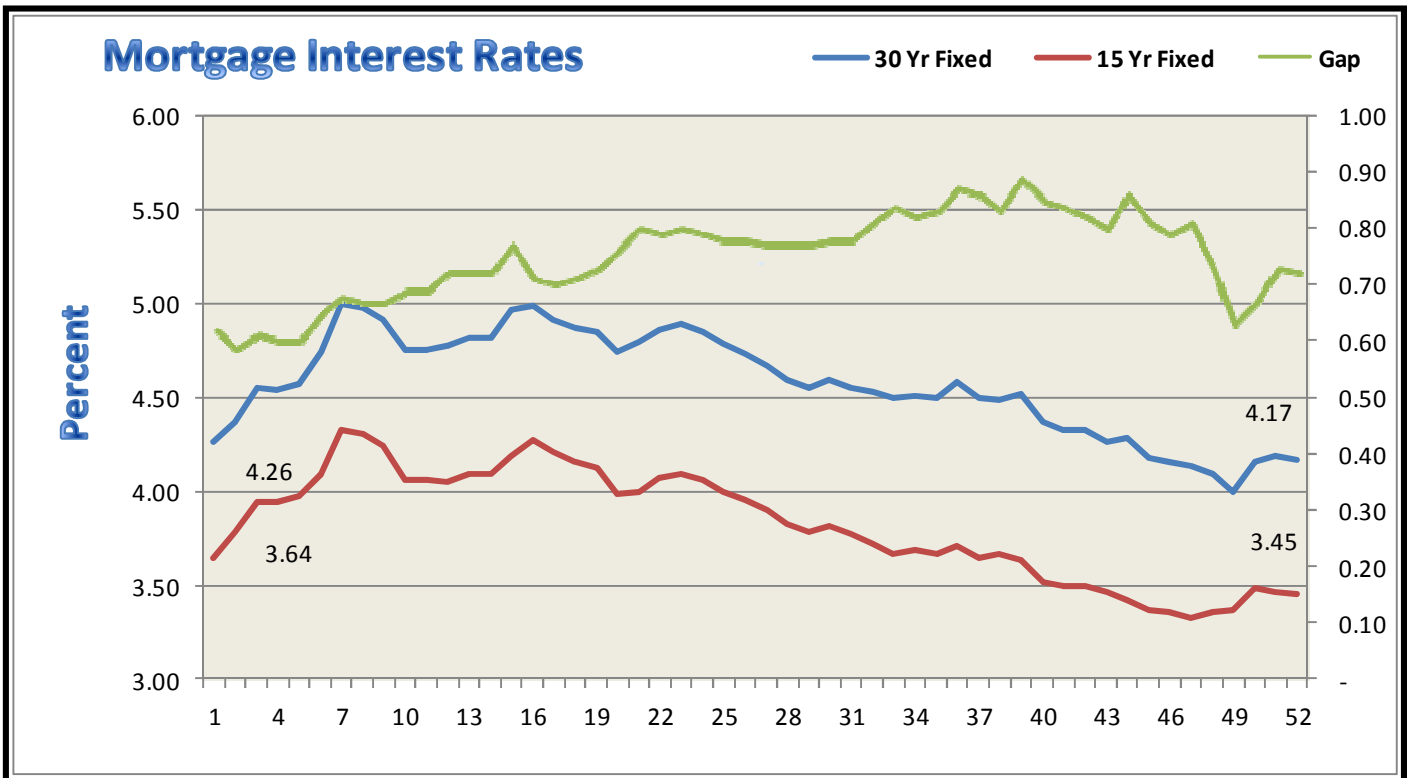


# INWEST TITLE SERVICES

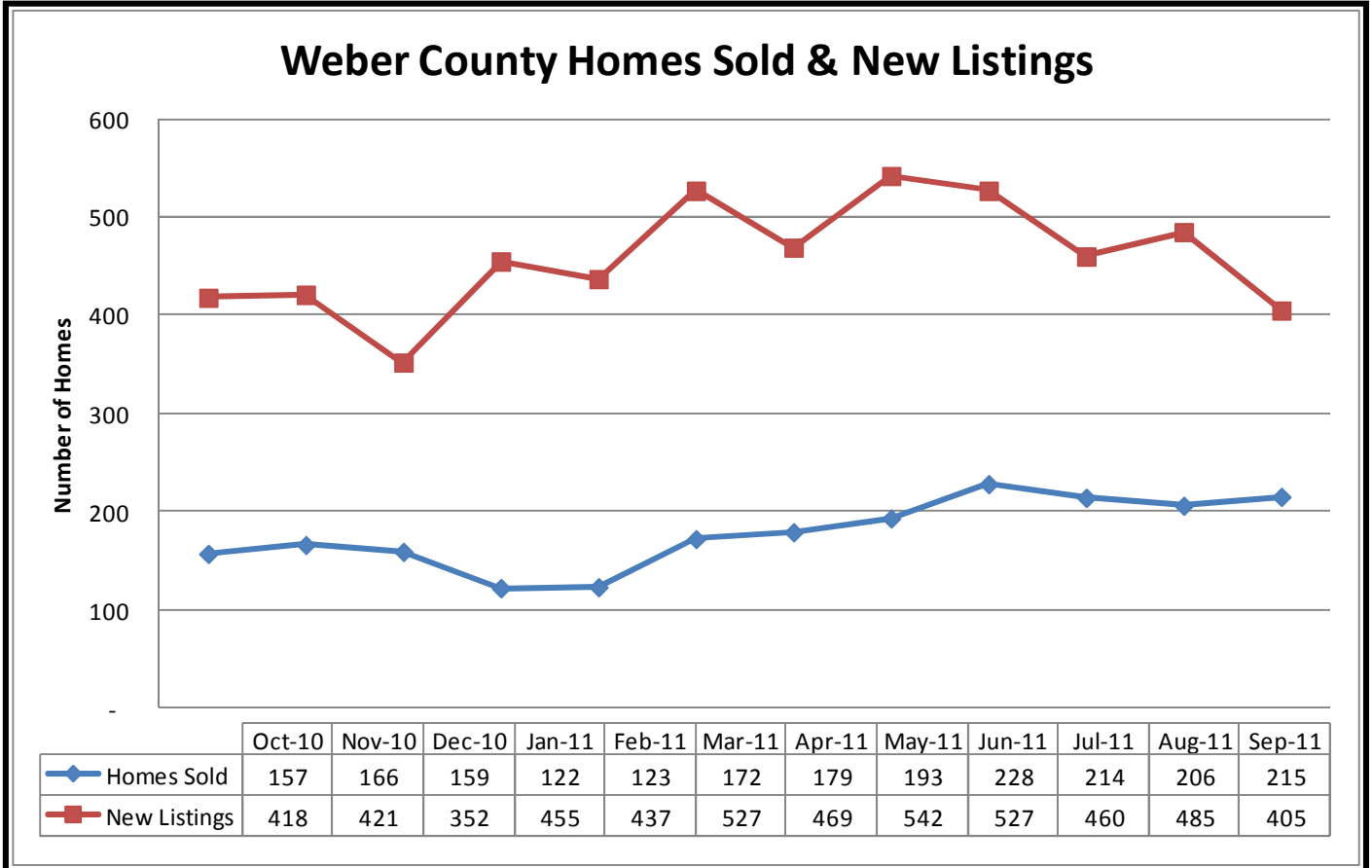
<b>South Ogden</b>	<b>801 475-4410</b>	<b>Layton</b>	<b>801 773-9806</b>
<b>Salt Lake</b>	<b>801 264-0700</b>	<b>Tooele</b>	<b>435 882-5510</b>
<b>Orem State St.</b>	<b>801 932-1013</b>	<b>Spanish Fork</b>	<b>801 201-2848</b>
<b>Park City</b>	<b>435 649-6655</b>	<b>Cedar City</b>	<b>435 586-5601</b>
<b>St. George</b>	<b>435 634-5080</b>	<b>Bountiful</b>	<b>801 296-2611</b>
<b>West Haven (Corporate offices) 2037 West Commerce Way, Ogden, UT 84401 801 399-3544</b>			



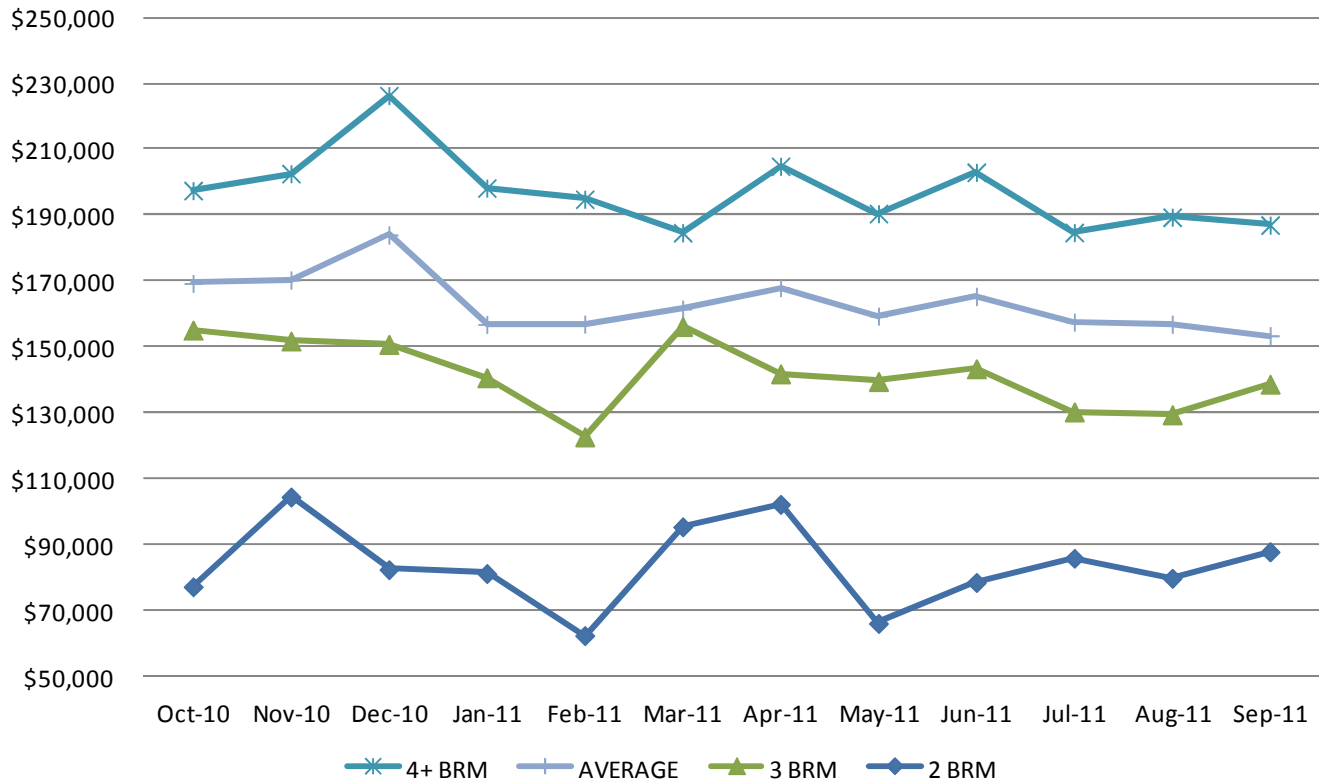
Seasonally adjusted indices from the Mortgage Bankers Association of America (MBA) shows the major loan application indices for the past 52 weeks. For the week ending October 14, 2011 the indices decreased an average of -13.43%. The Refi Index decreased -16.6%, the Market Index decreased -14.9%, and the Purchase Index decreased -8.8%. For more information go to [www.mortgagebankers.org](http://www.mortgagebankers.org).



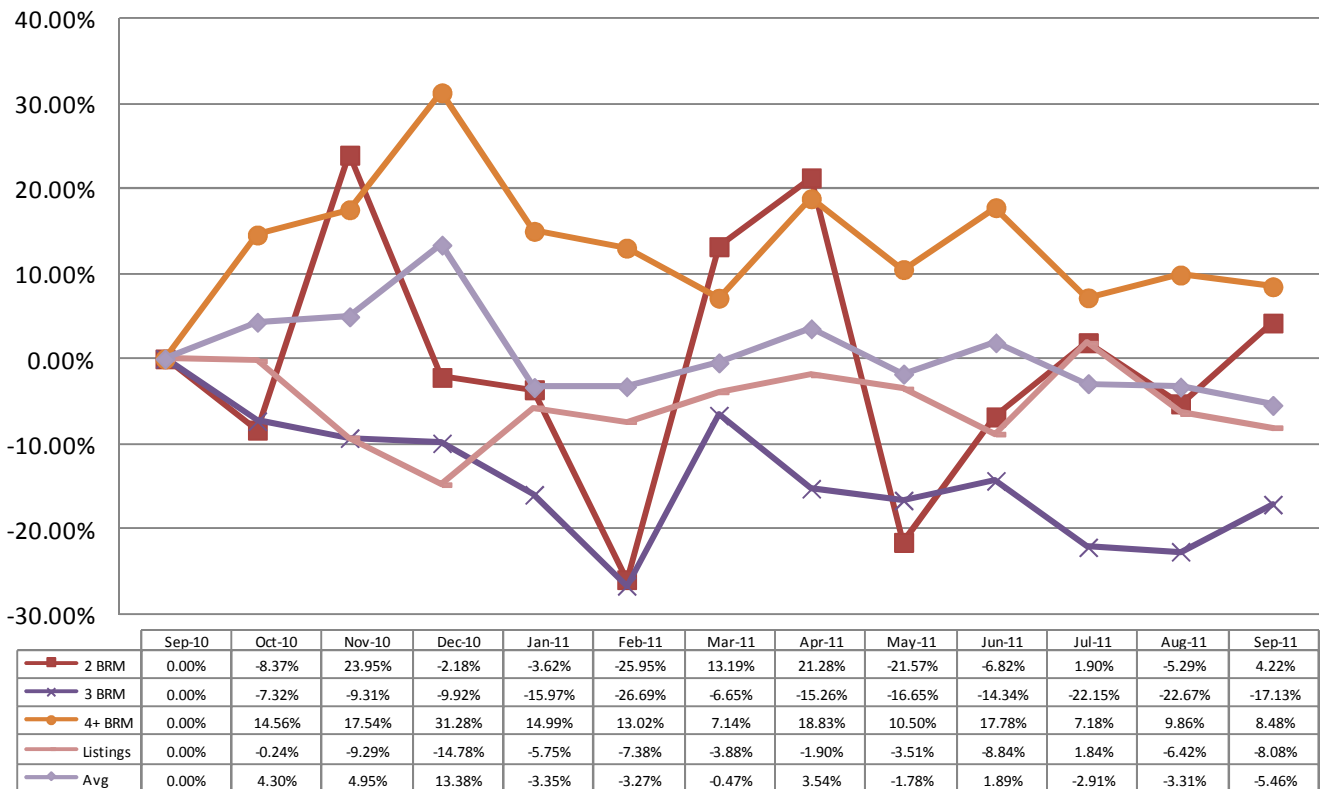
The Bankrate.com average mortgage interest rates are 4.17% and 3.45% for 30 year and 15 year mortgages, respectively.  
 Freddie Mac reports mortgage rates from its weekly survey at 4.11% for a 30 year mortgage, 3.38% for the 15 year mortgage, and 2.94% for the 1-Yr. ARM.

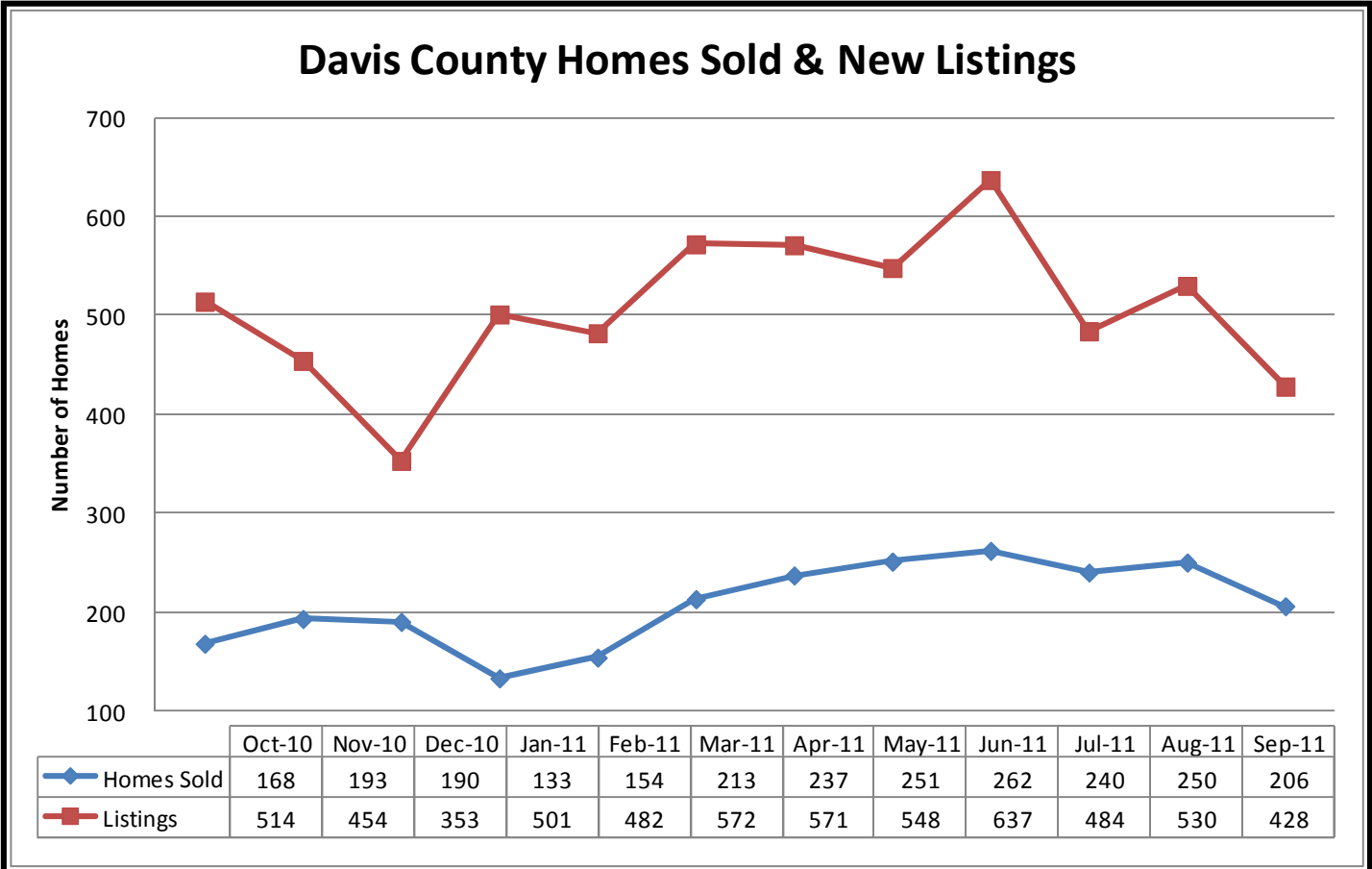
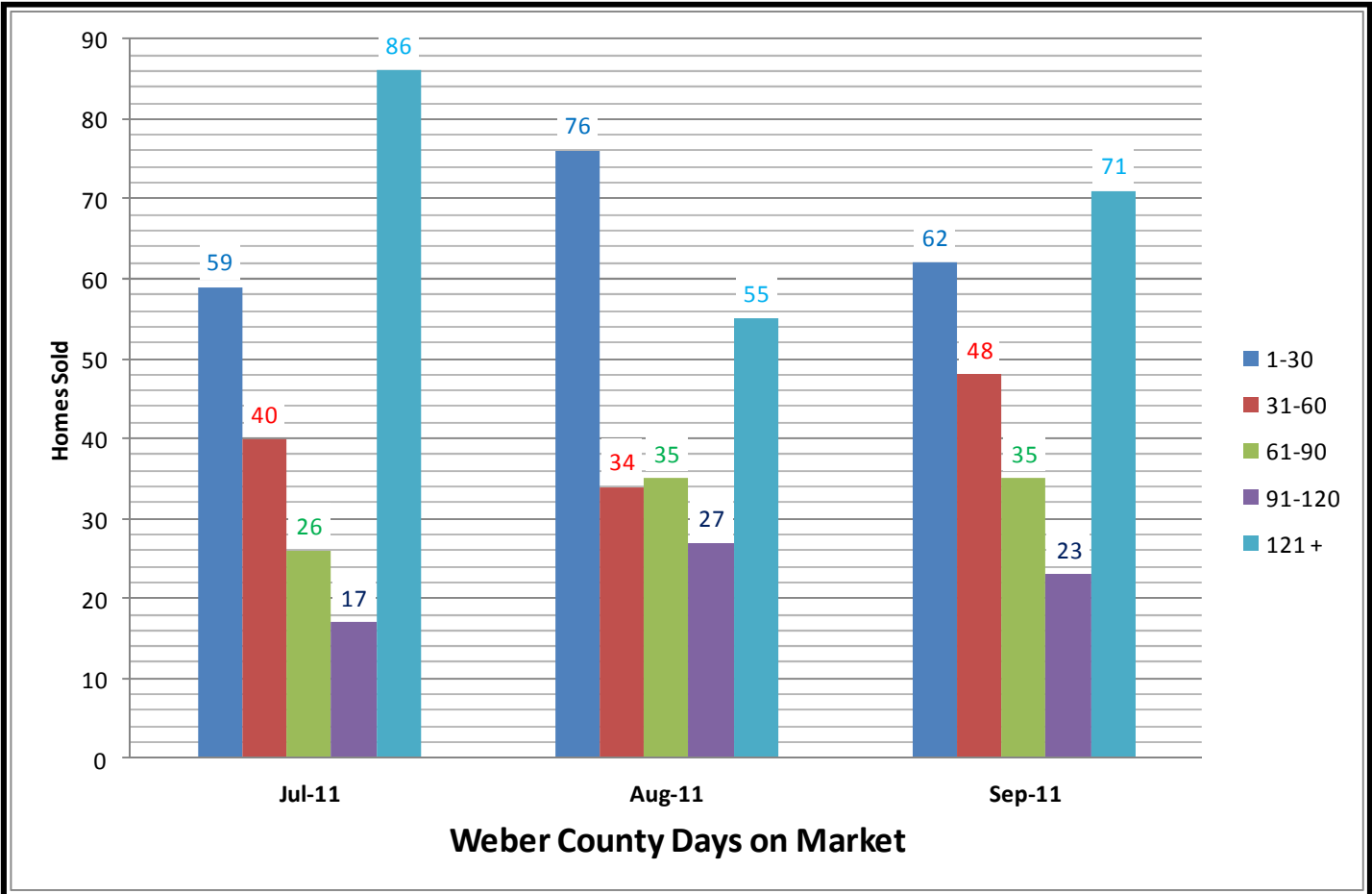


### Weber County Average Sales Price

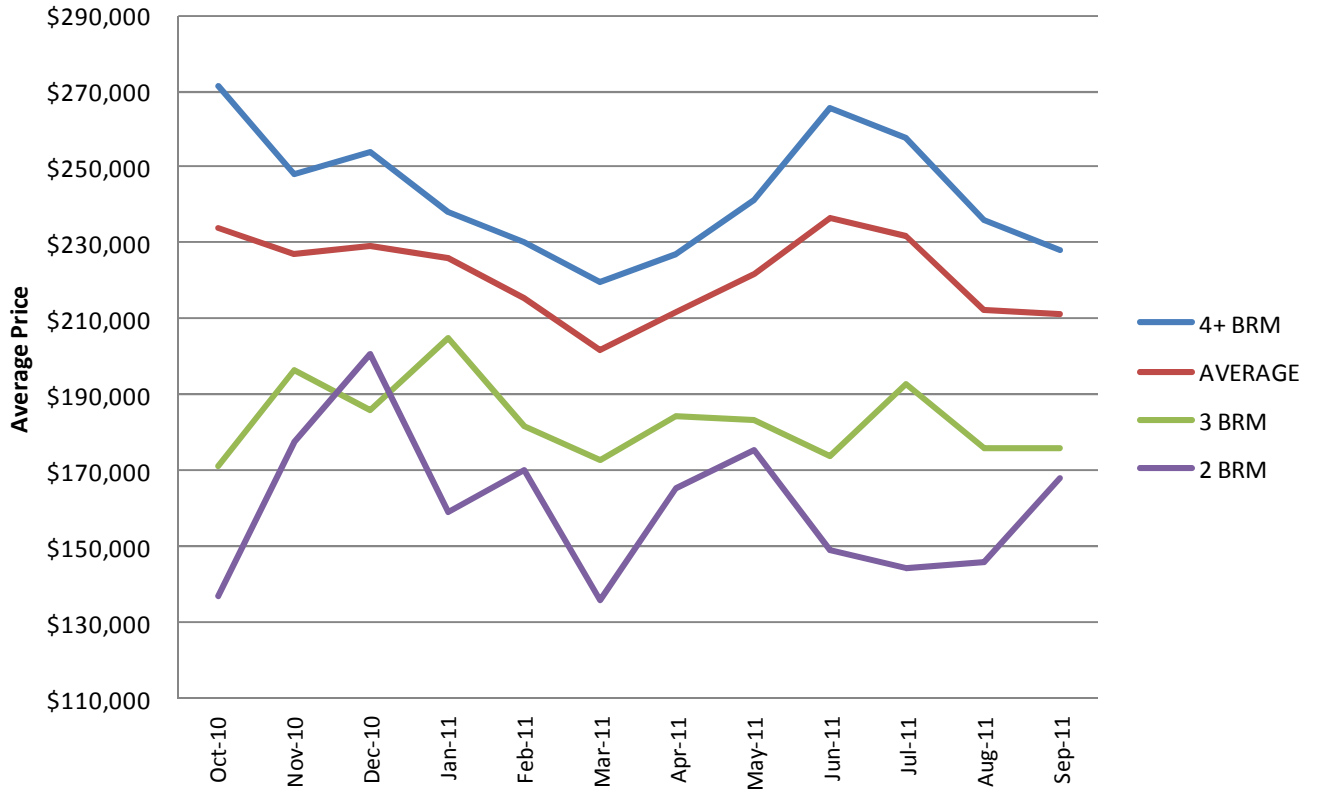


### Weber County Percent Increase - Sales Price

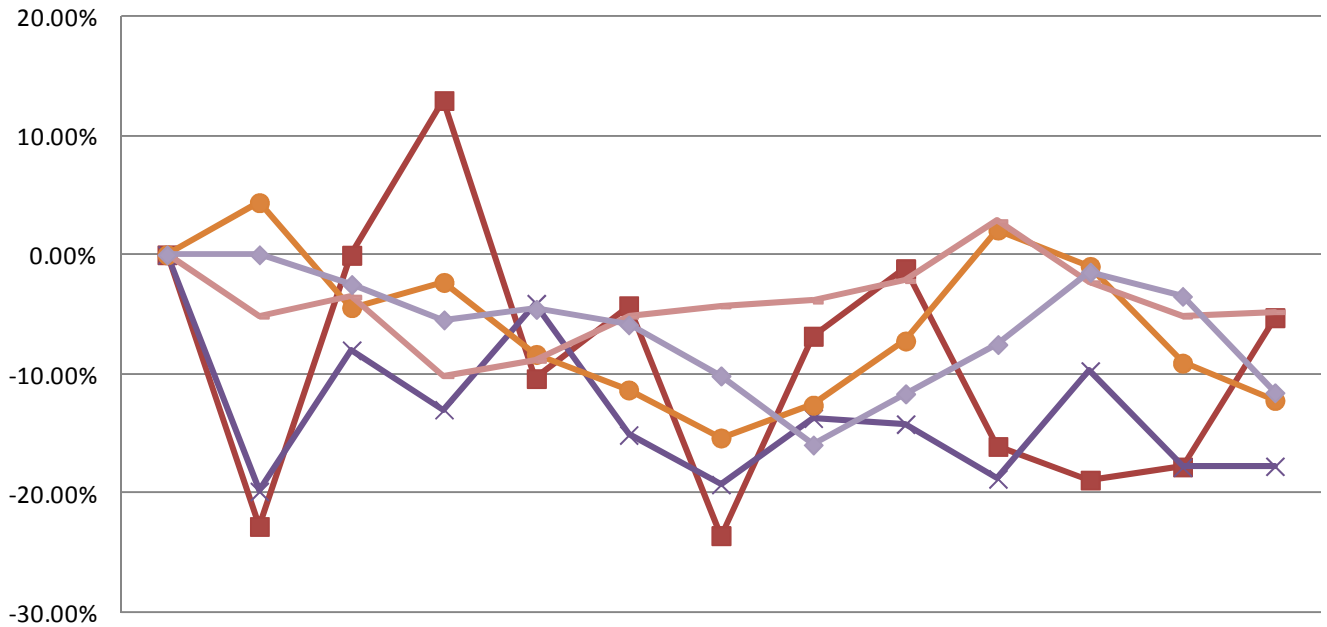




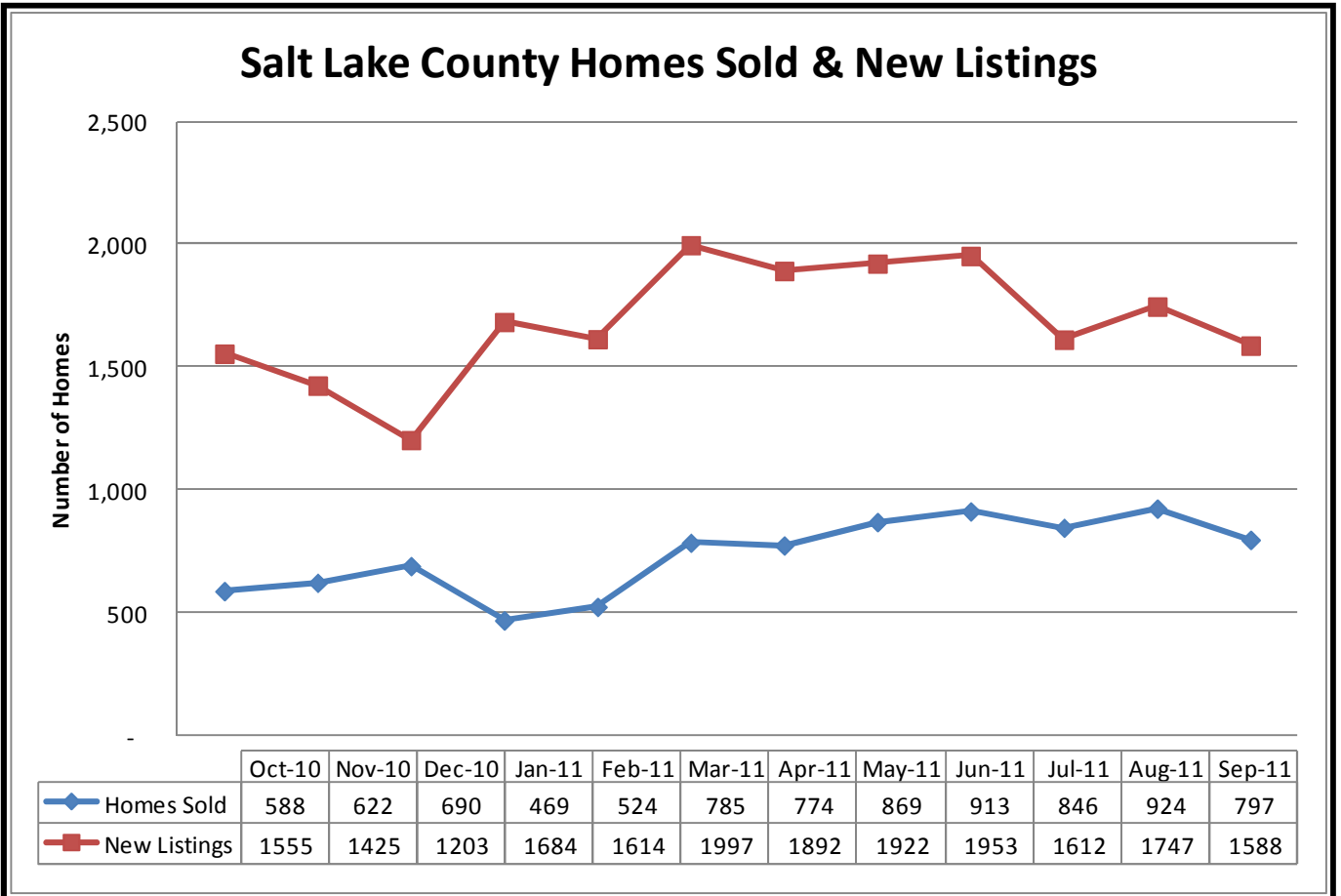
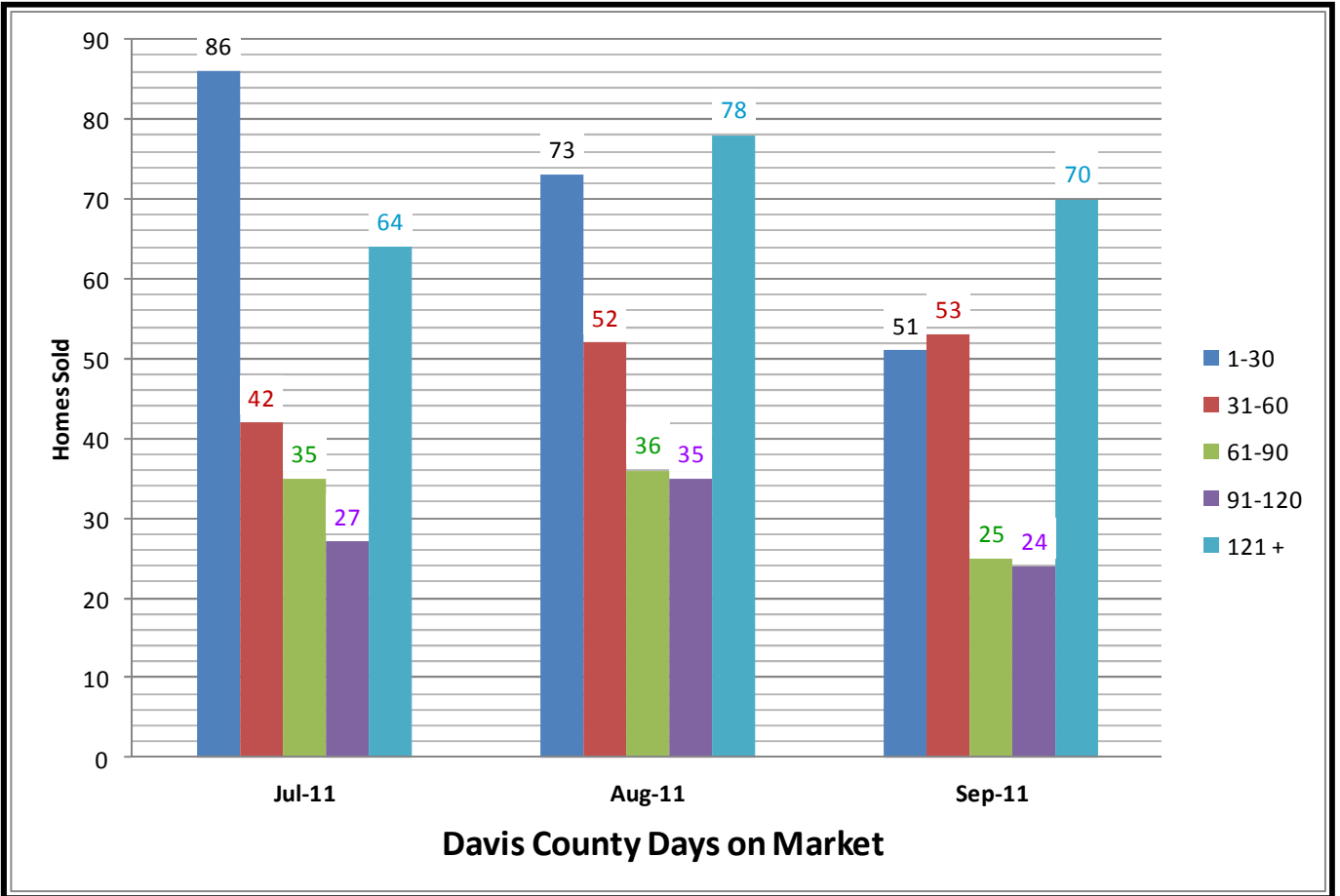
### Davis County Average Sales Price



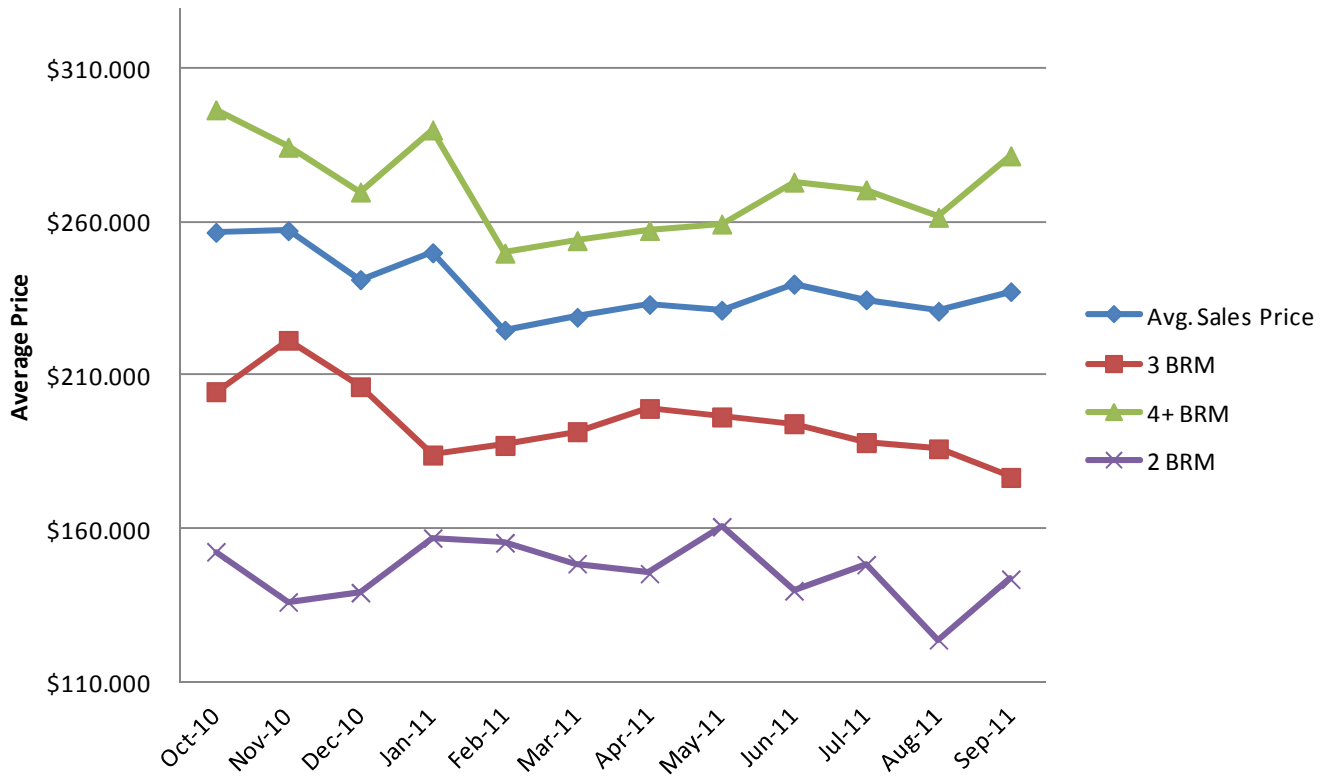
### Davis County Percent Increase - Sales Price



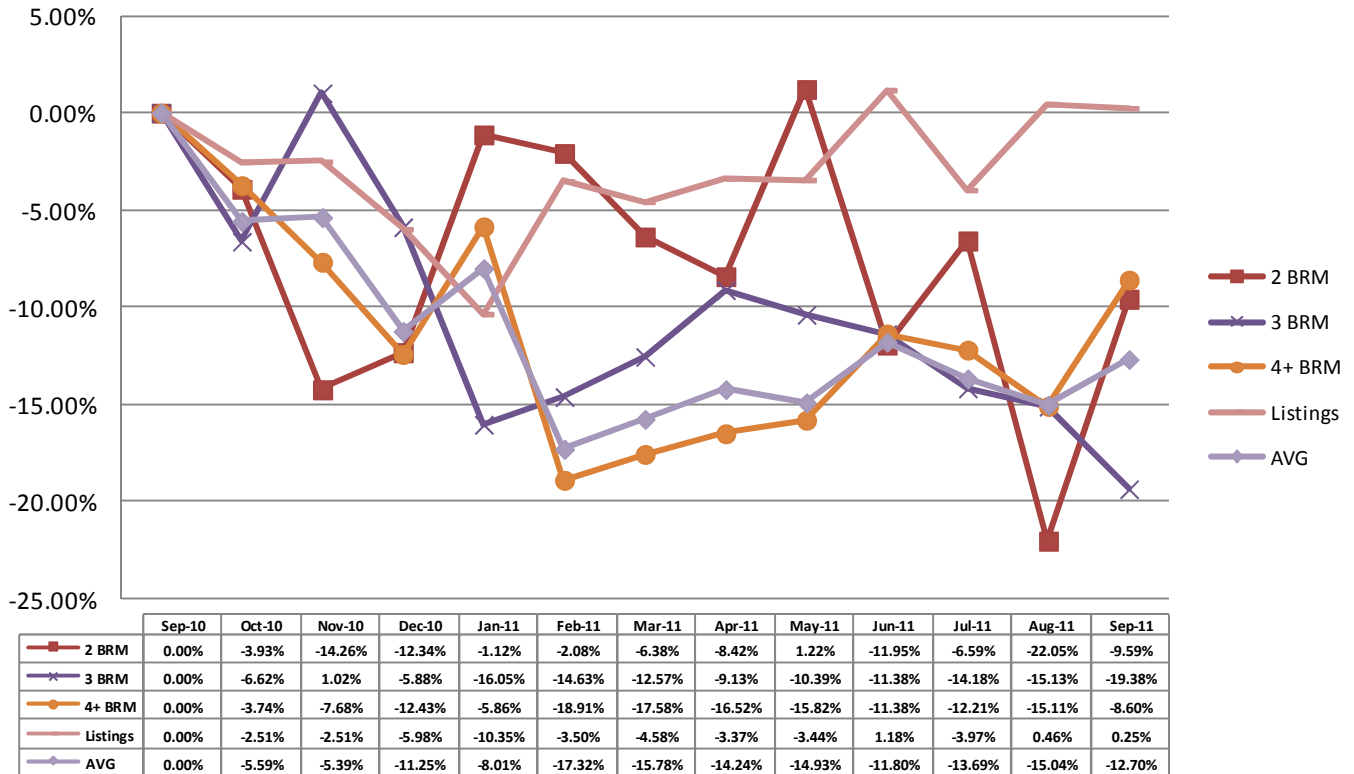
	Sep-10	Oct-10	Nov-10	Dec-10	Jan-11	Feb-11	Mar-11	Apr-11	May-11	Jun-11	Jul-11	Aug-11	Sep-11
2 BRM	0.00%	-22.81%	-0.04%	12.96%	-10.40%	-4.27%	-23.58%	-6.83%	-1.17%	-16.10%	-18.91%	-17.81%	-5.28%
3 BRM	0.00%	-19.87%	-8.01%	-13.00%	-4.10%	-15.13%	-19.29%	-13.73%	-14.22%	-18.81%	-9.76%	-17.84%	-17.76%
4+ BRM	0.00%	4.38%	-4.44%	-2.32%	-8.36%	-11.35%	-15.38%	-12.62%	-7.24%	2.08%	-0.97%	-9.10%	-12.23%
Listings	0.00%	-5.15%	-3.55%	-10.16%	-8.87%	-5.17%	-4.30%	-3.91%	-2.19%	2.81%	-2.32%	-5.15%	-4.80%
Avg	0.00%	0.00%	-2.49%	-5.46%	-4.57%	-5.89%	-10.16%	-15.96%	-11.67%	-7.54%	-1.46%	-3.49%	-11.58%

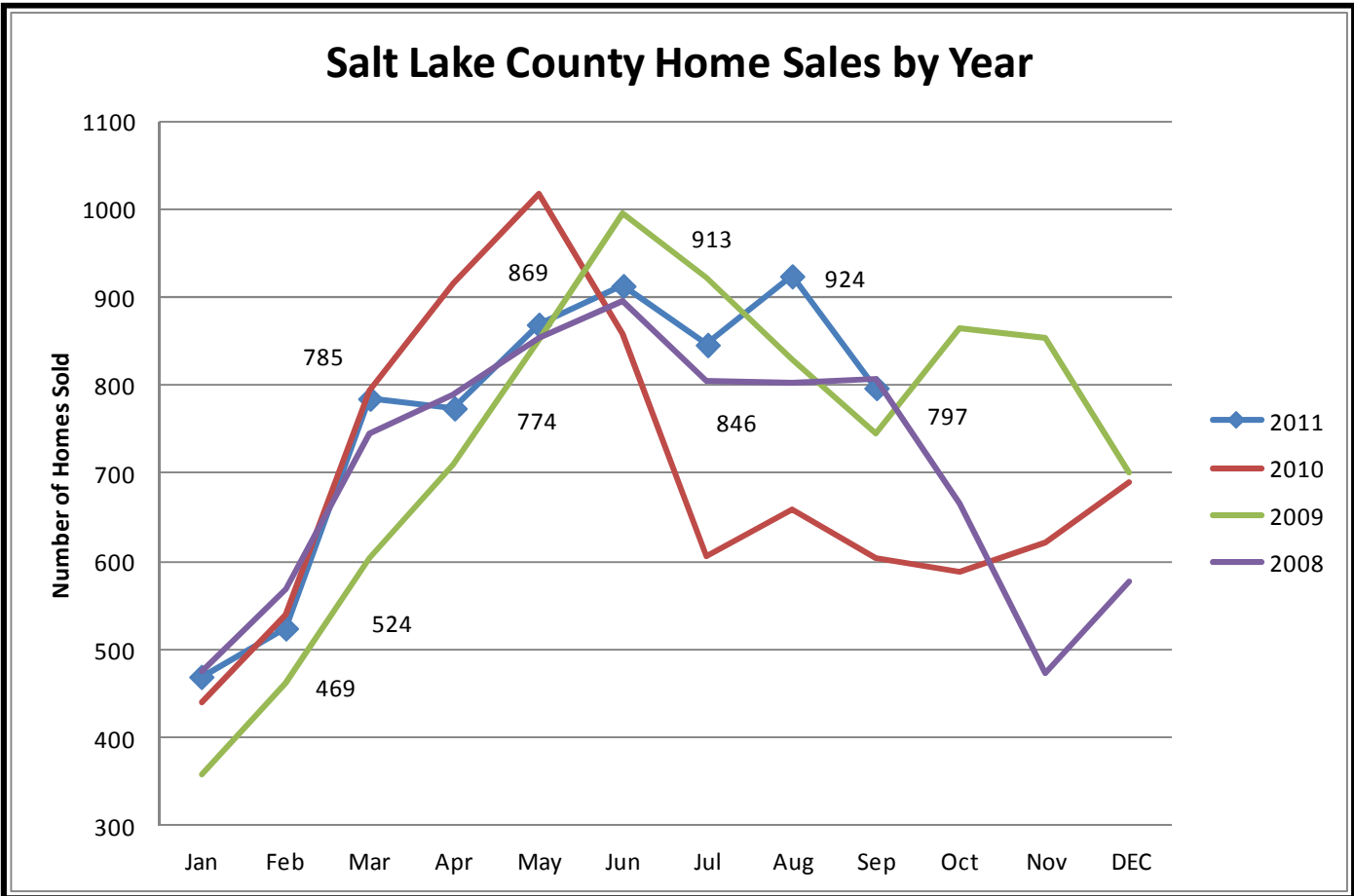
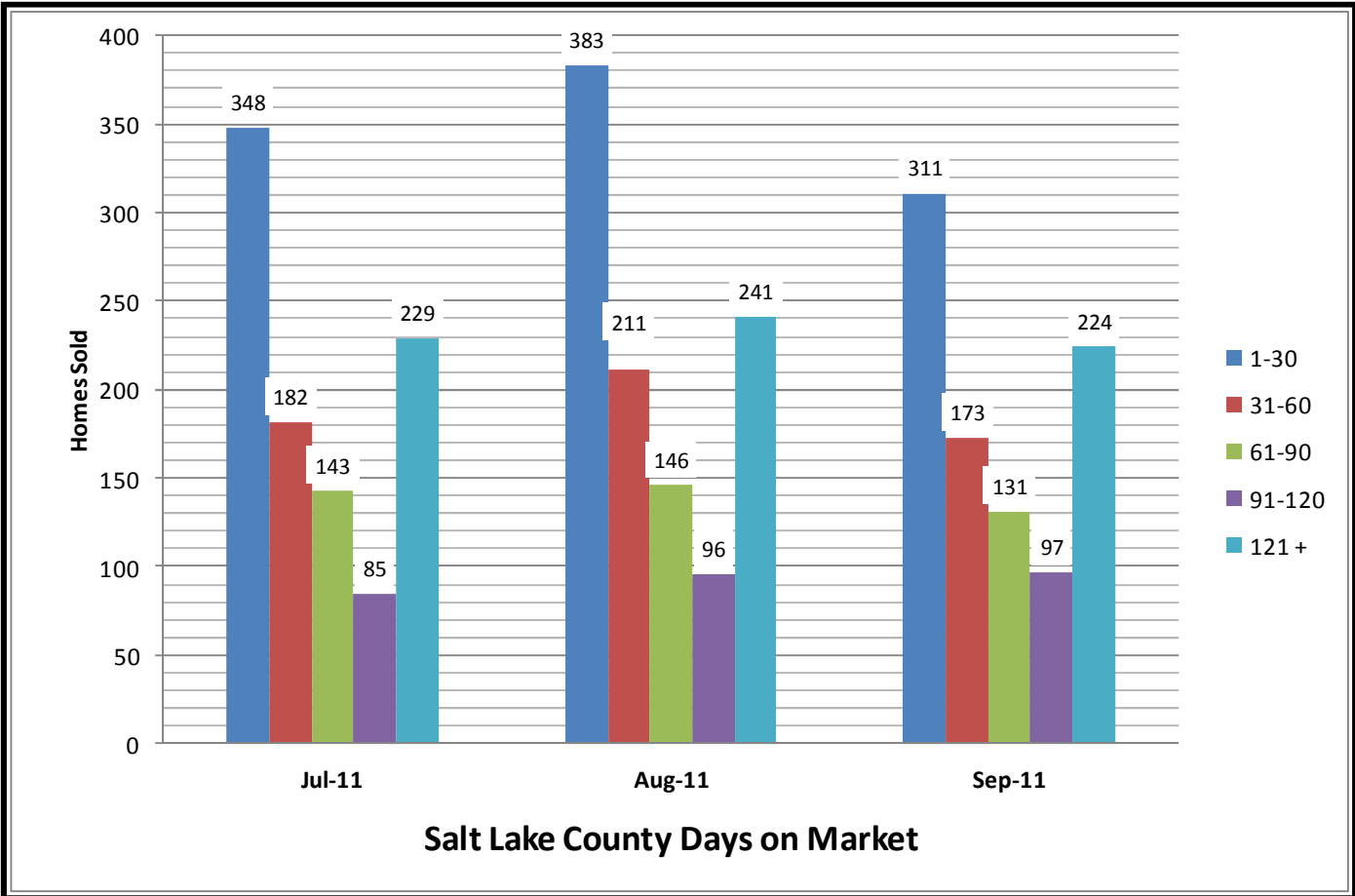


### Salt Lake County Average Sales Price



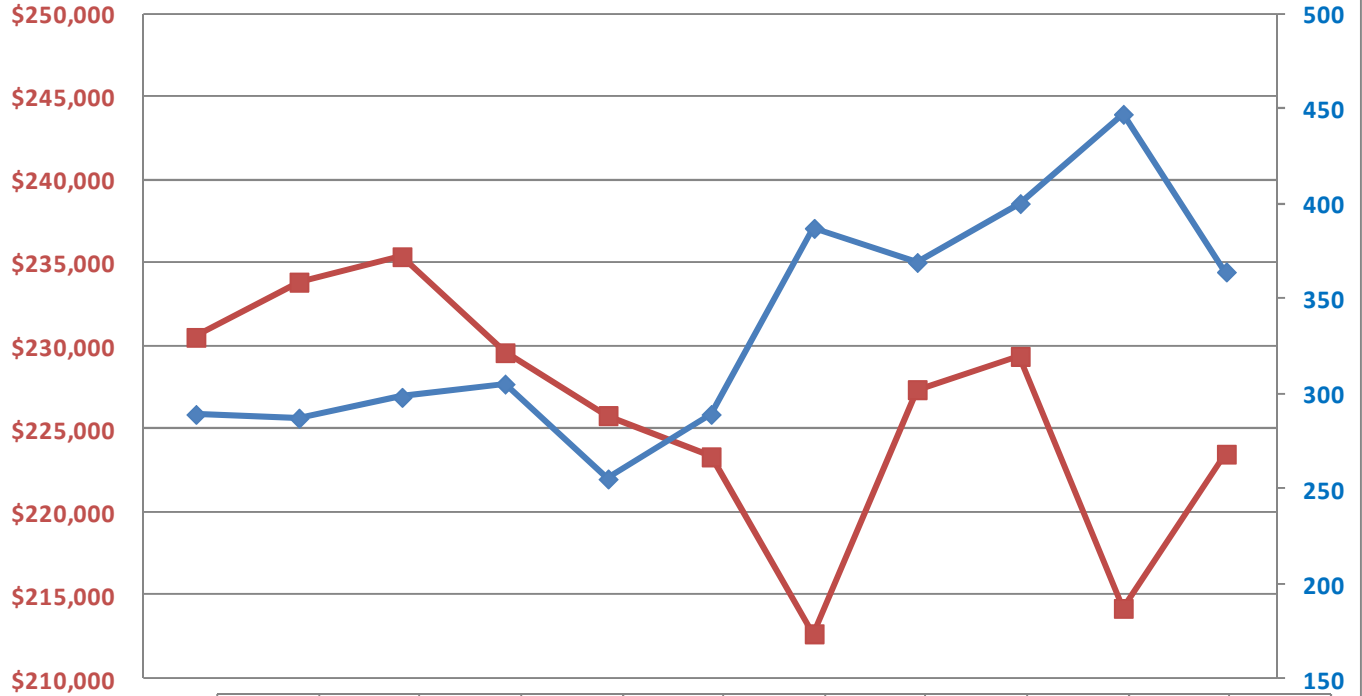
### Salt Lake County Percent Increase - Sales Price





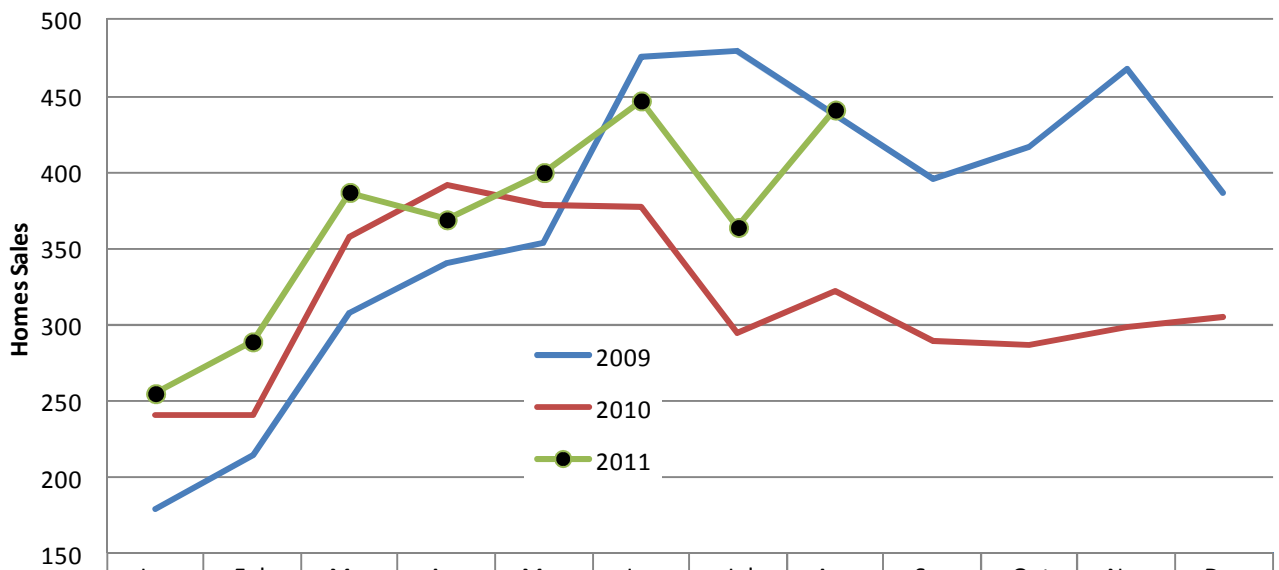
Go to [www.inwesttitle.com](http://www.inwesttitle.com) for previous reports.

## Utah County Single Family Homes



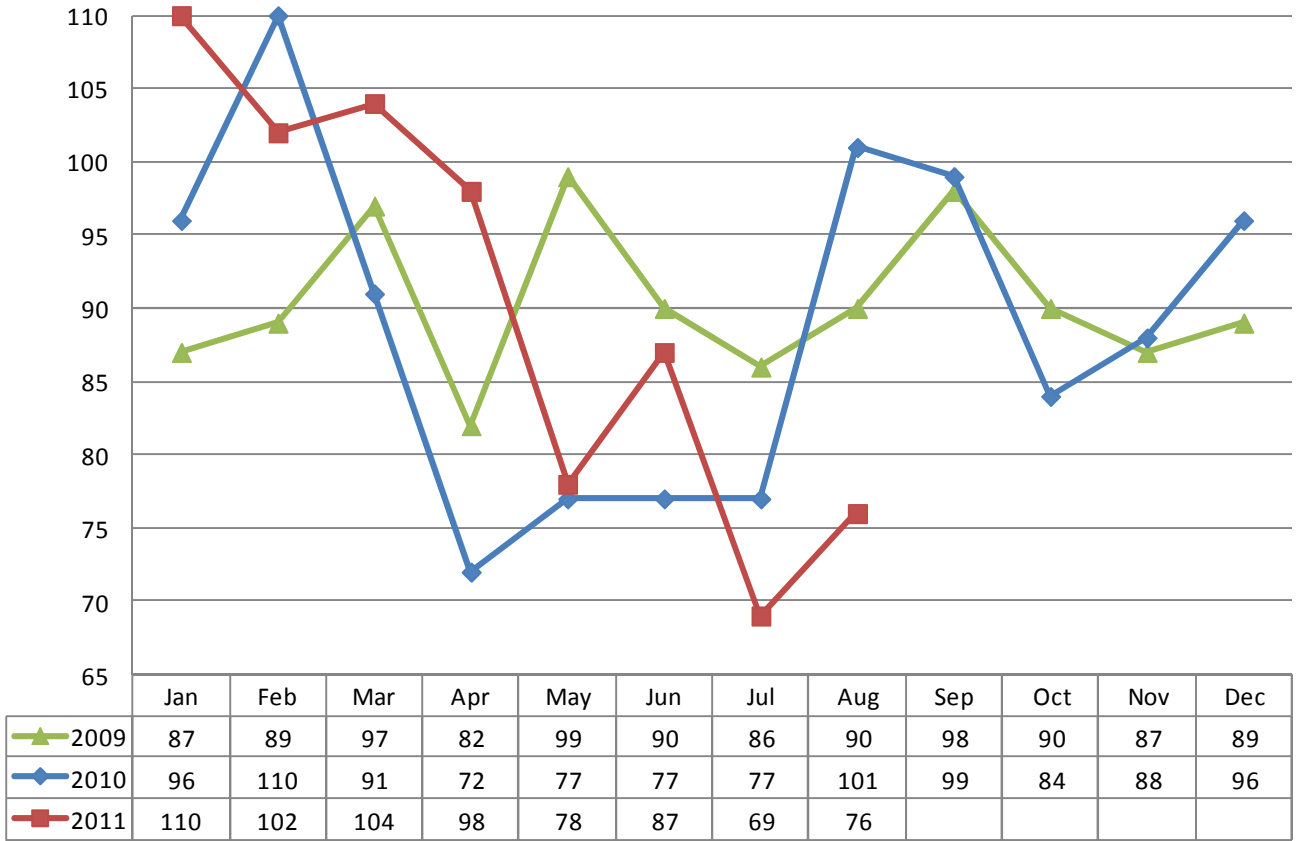
	Oct-10	Nov-10	Dec-10	Jan-11	Feb-11	Mar-11	Apr-11	May-11	Jun-11	Jul-11	Aug-11
■ Avg. Price	\$230,52	\$233,84	\$235,37	\$229,59	\$225,81	\$223,33	\$212,69	\$227,37	\$229,38	\$214,21	\$223,49
◆ Homes Sold	289	287	298	305	255	289	387	369	400	447	364

## Utah County Single Family Home Sales by Year

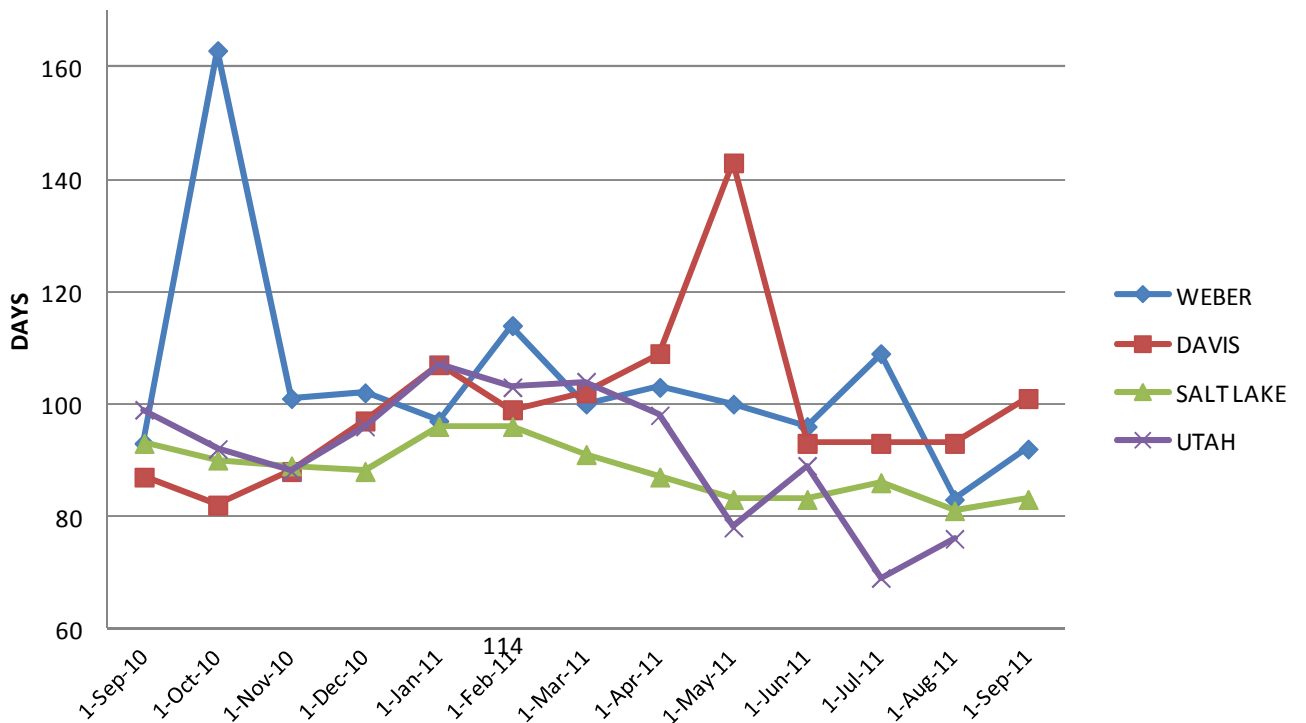


	Jan	Feb	Mar	Apr	May	Jun	Jul	Aug	Sep	Oct	Nov	Dec
— 2009	179	215	308	340	353	475	479	438	395	416	468	387
— 2010	241	241	357	391	379	377	294	322	289	287	298	305
● 2011	255	289	387	369	400	447	364	441				

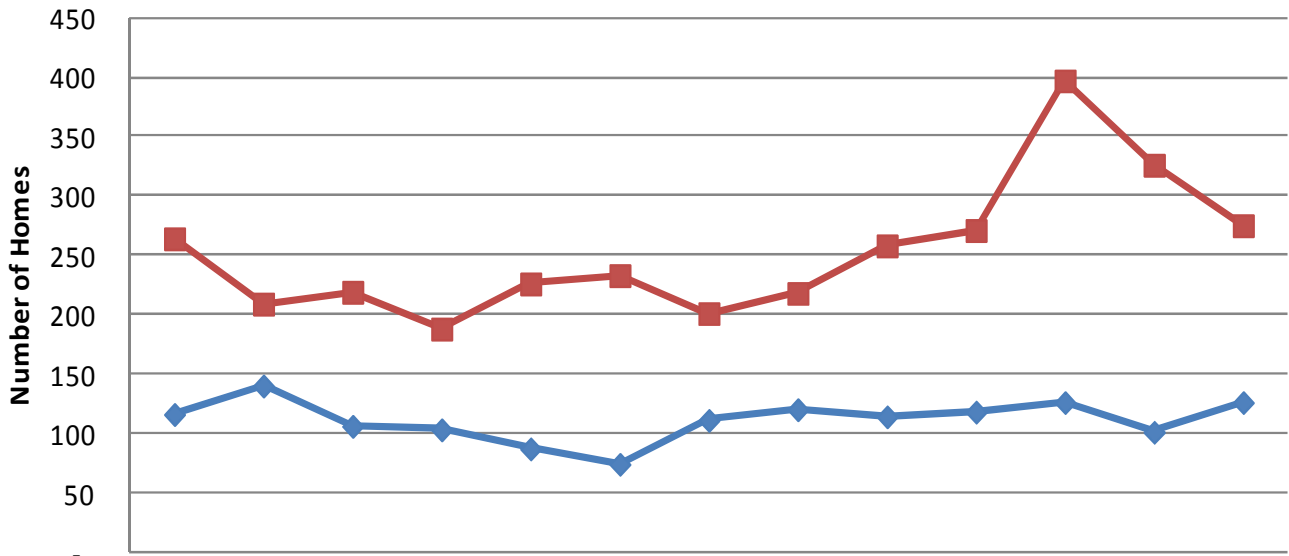
### Utah County Average Days on Market



### AVERAGE DAYS ON MARKET

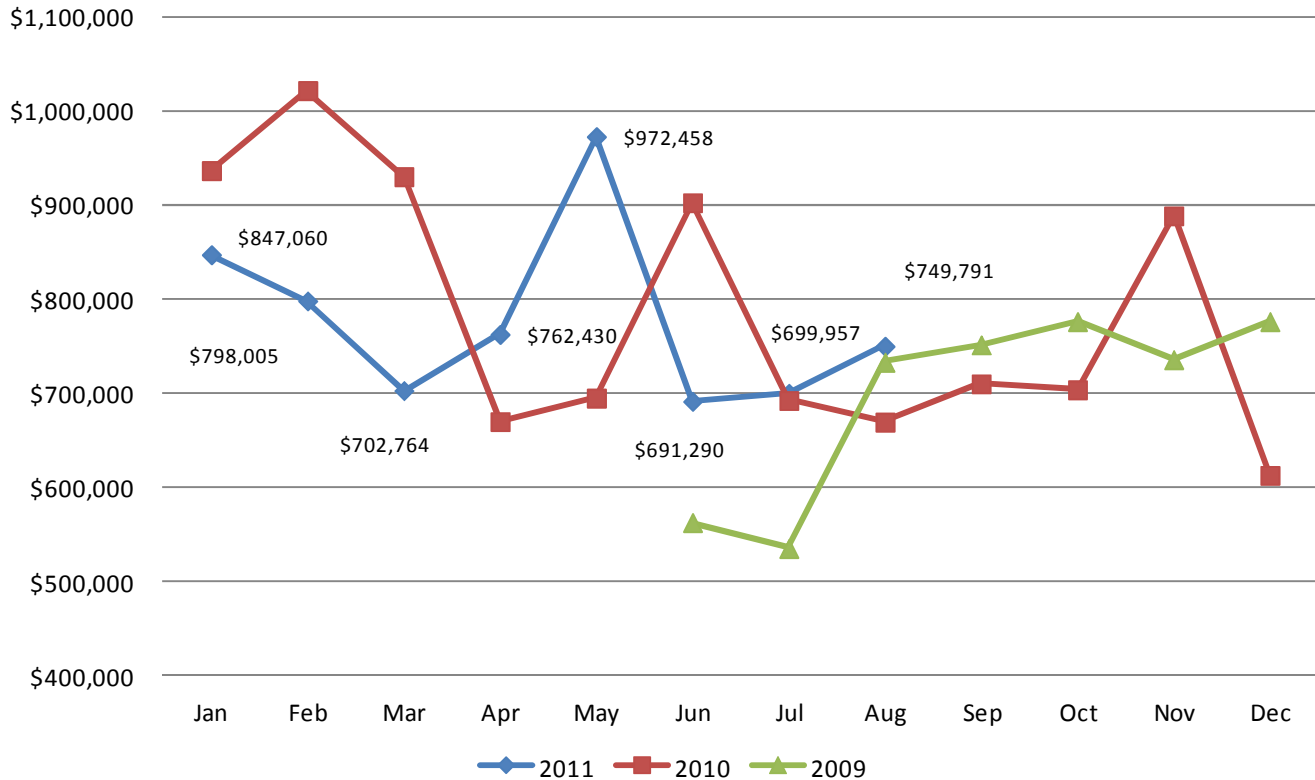


## Summit County Homes Sold & New Listings

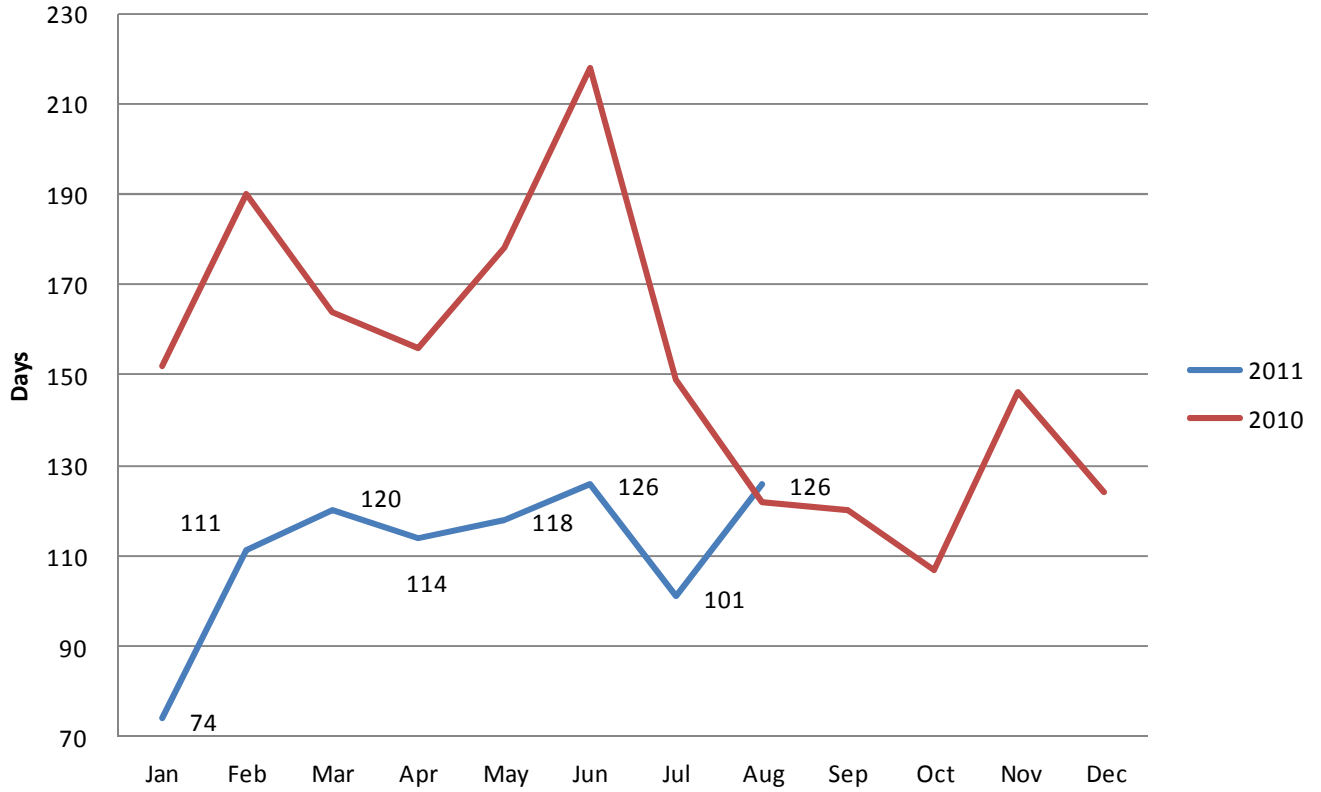


	Aug-10	Sep-10	Oct-10	Nov-10	Dec-10	Jan-11	Feb-11	Mar-11	Apr-11	May-11	Jun-11	Jul-11	Aug-11
Homes Sold	116	140	106	103	87	74	111	120	114	118	126	101	126
New Listings	264	209	219	188	226	233	201	218	258	271	397	326	275

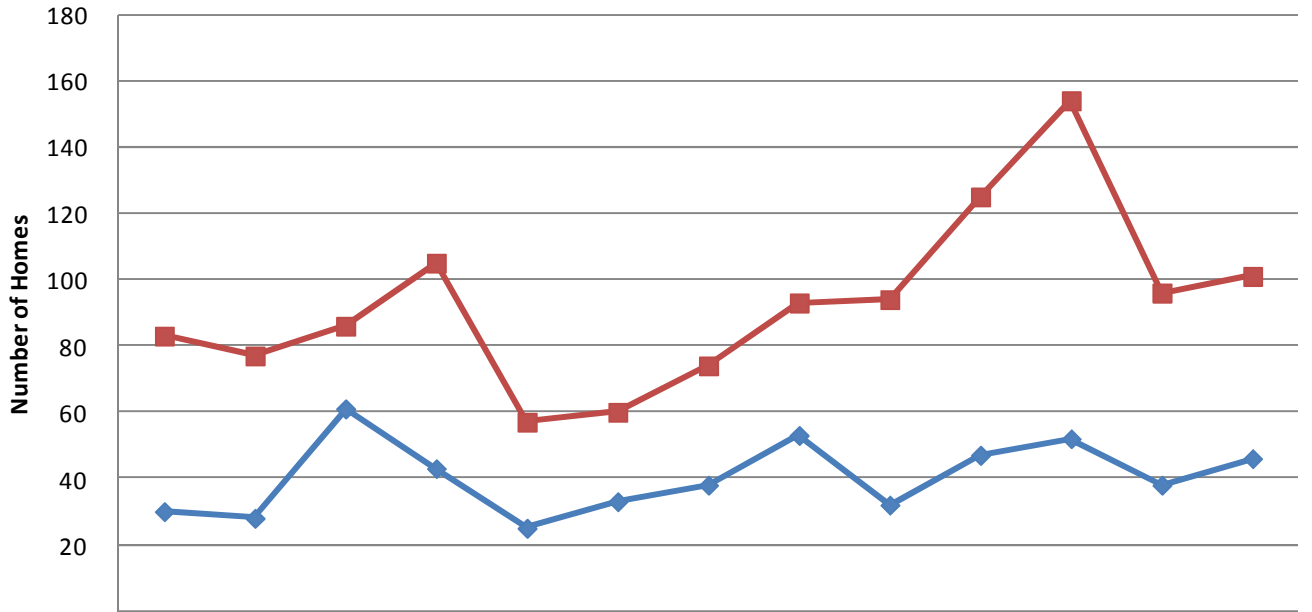
## Summit County Average Sales Price



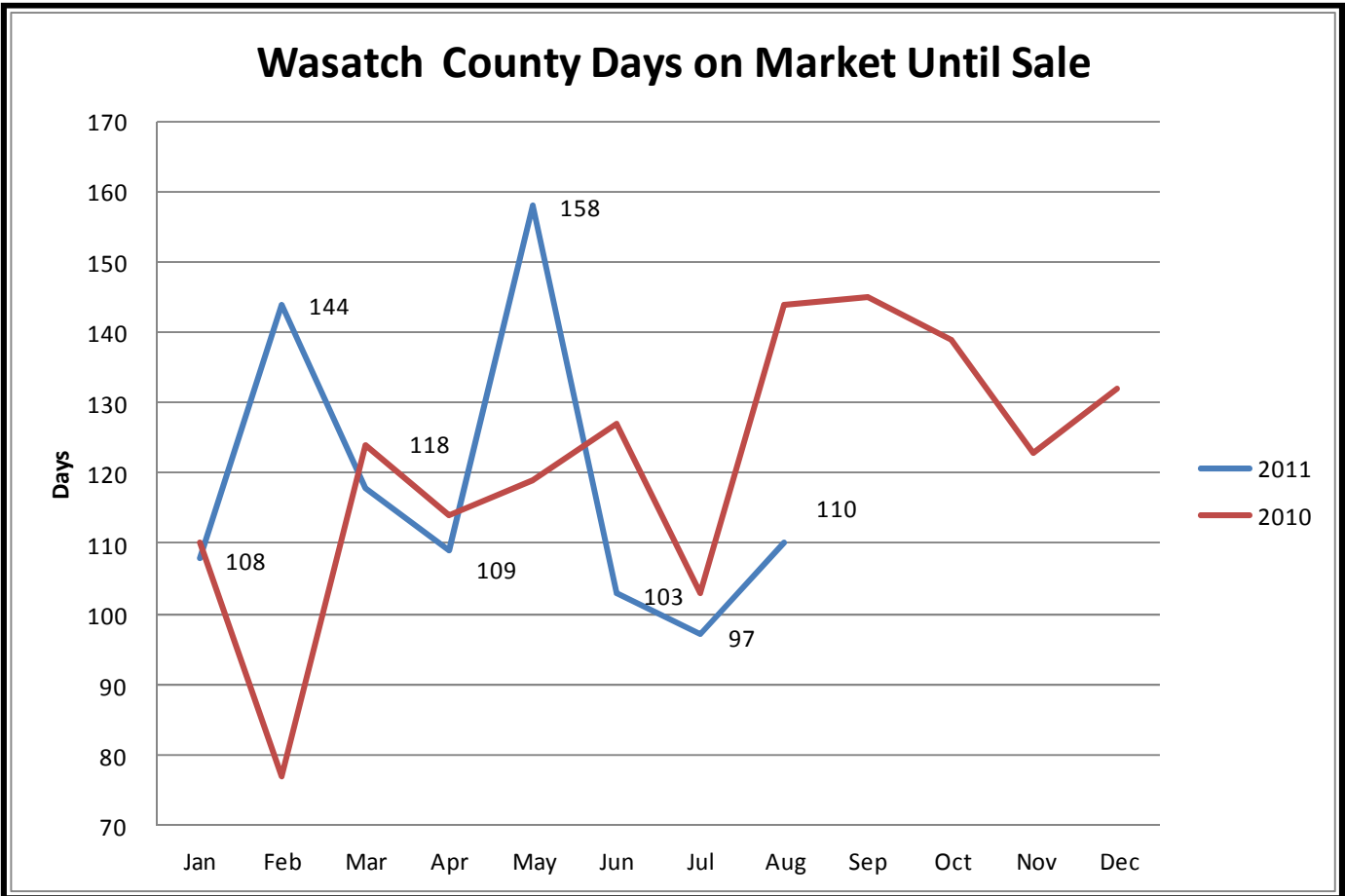
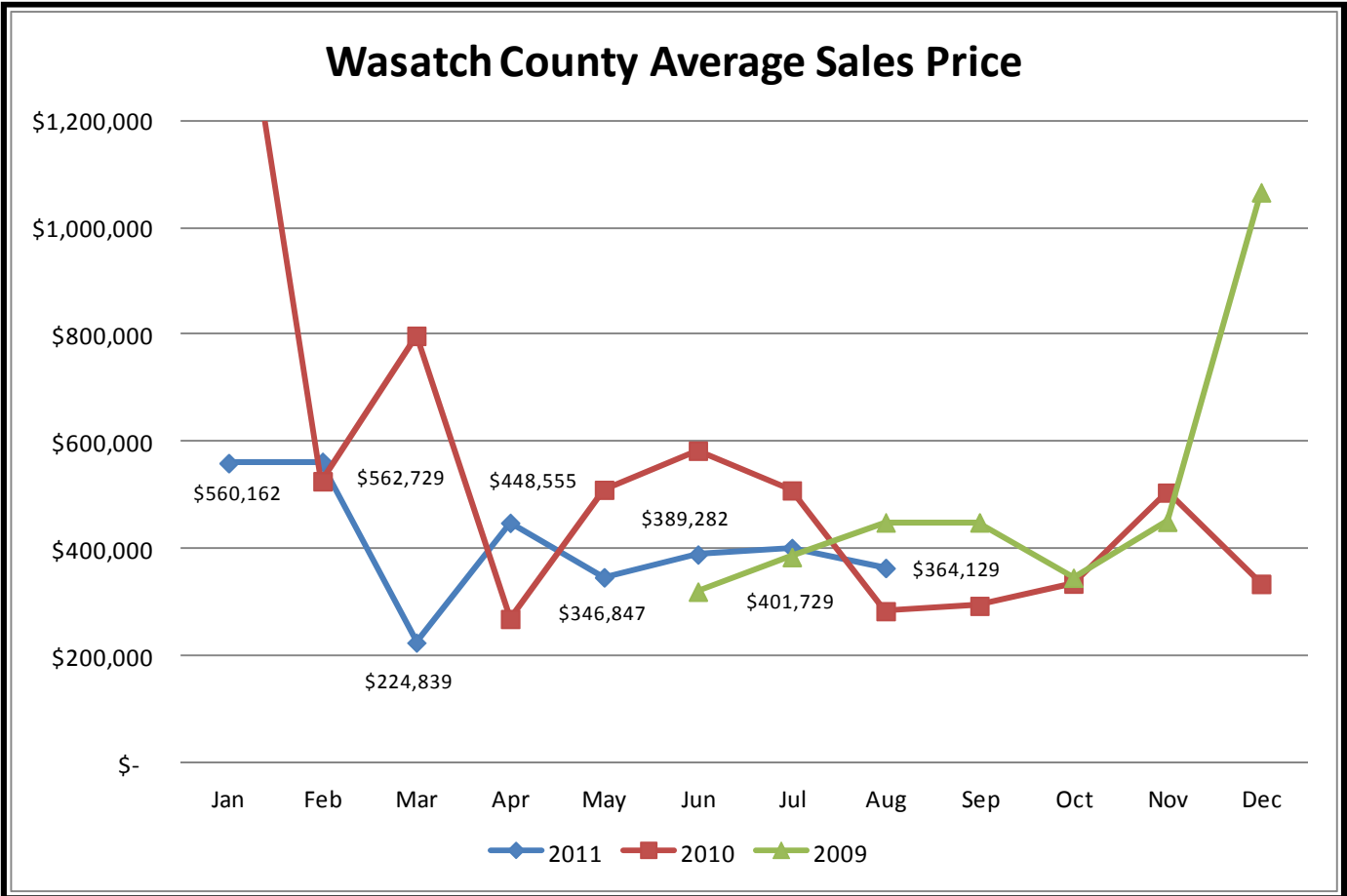
### Summitt County Days on Market Until Sale



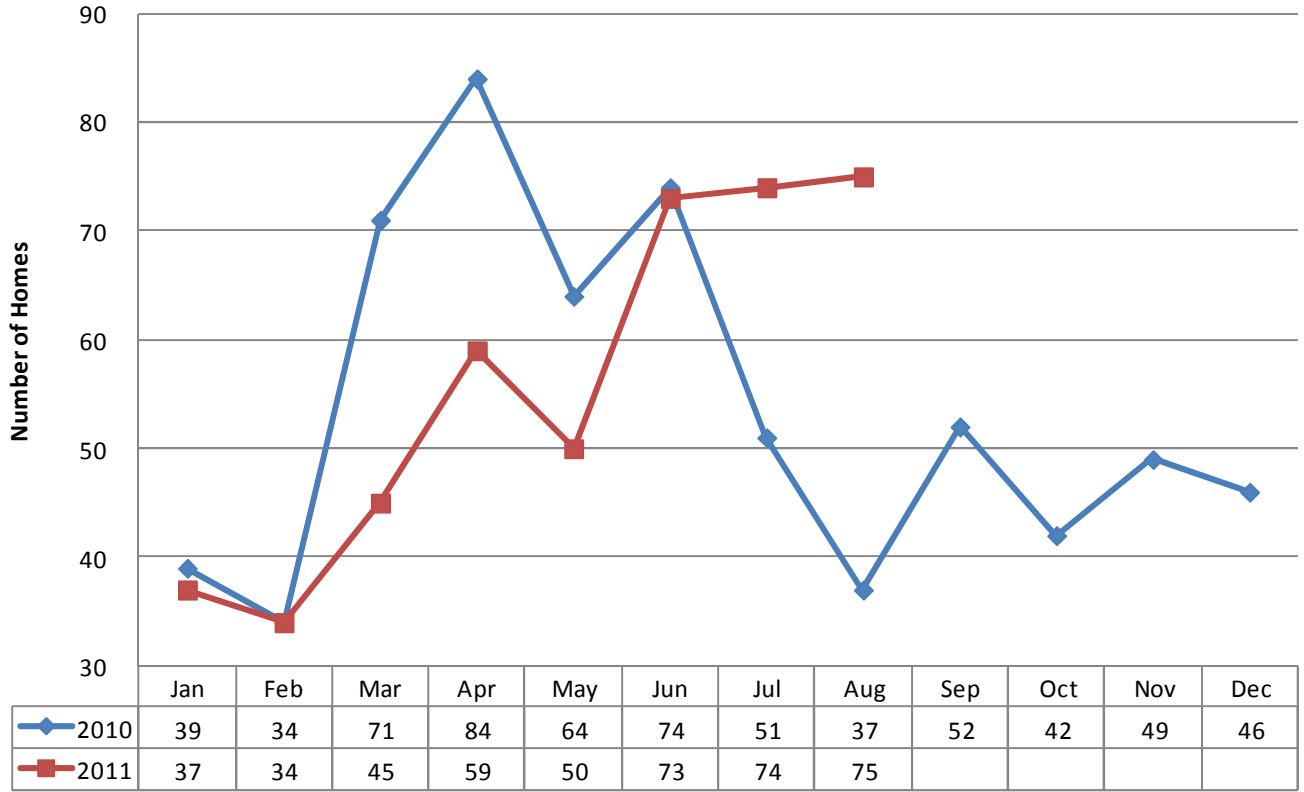
### Wasatch County Homes Sold & New Listings



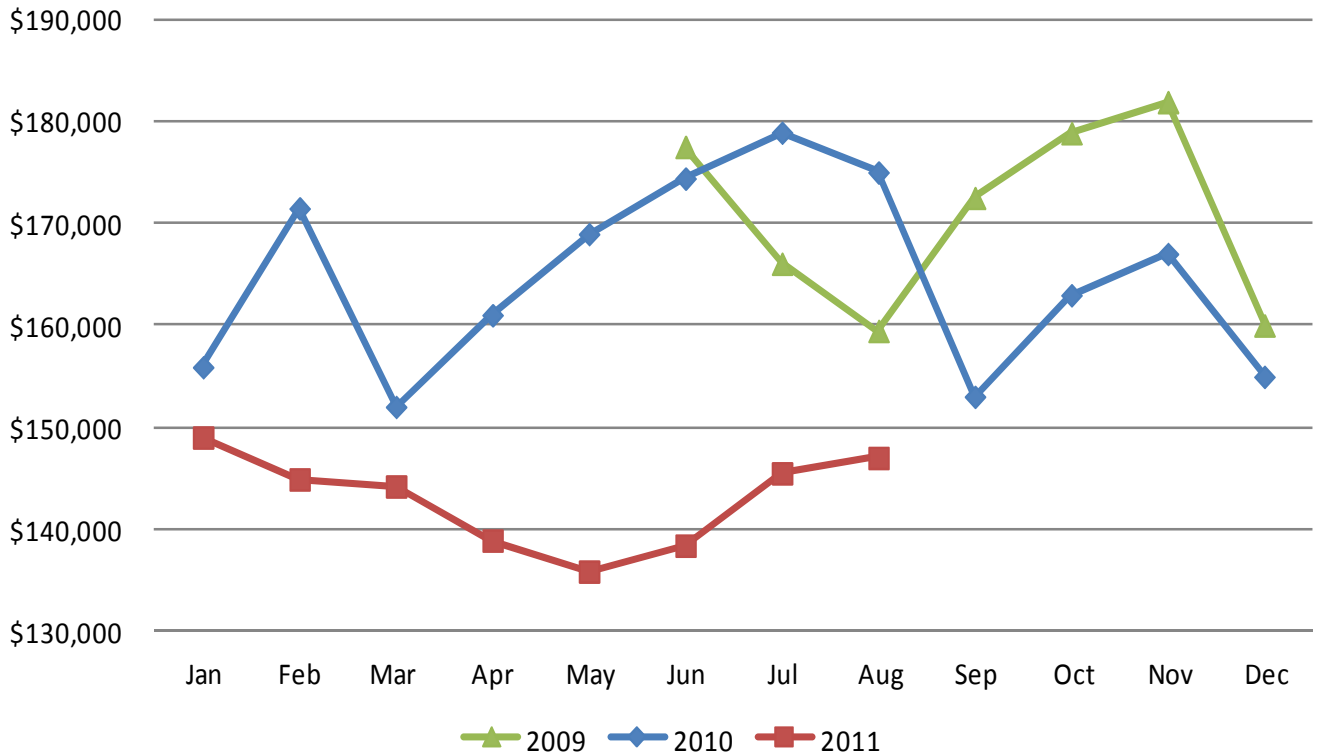
	Aug-10	Sep-10	Oct-10	Nov-10	Dec-10	Jan-11	Feb-11	Mar-11	Apr-11	May-11	Jun-11	Jul-11	Aug-11
◆ Homes Sold	30	28	61	43	25	33	38	53	32	47	52	38	46
■ New Listings	83	77	86	105	57	60	74	93	94	125	154	96	101



### Tooele County Homes Sold



### Tooele County Median Sales Price



**You are receiving this e-mail Market Data Report from Inwest Title Services, Inc. as a means to keep you posted on local, state, and national market trends.**

**It is our pleasure to compile and supply you with this information on a regular basis. If you wish to discontinue receiving this report, please respond with “Unsubscribe” in the Subject Line.**

