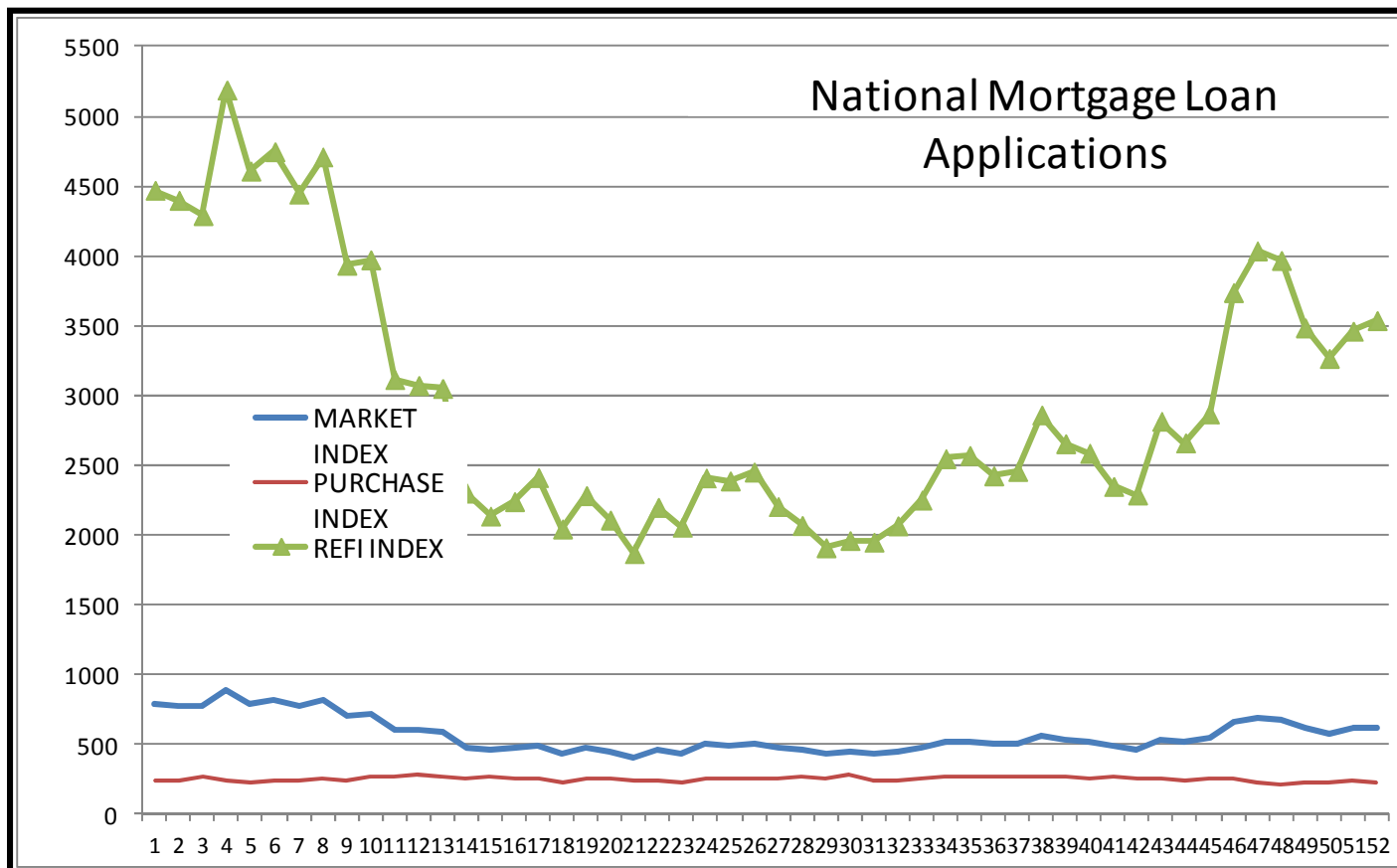
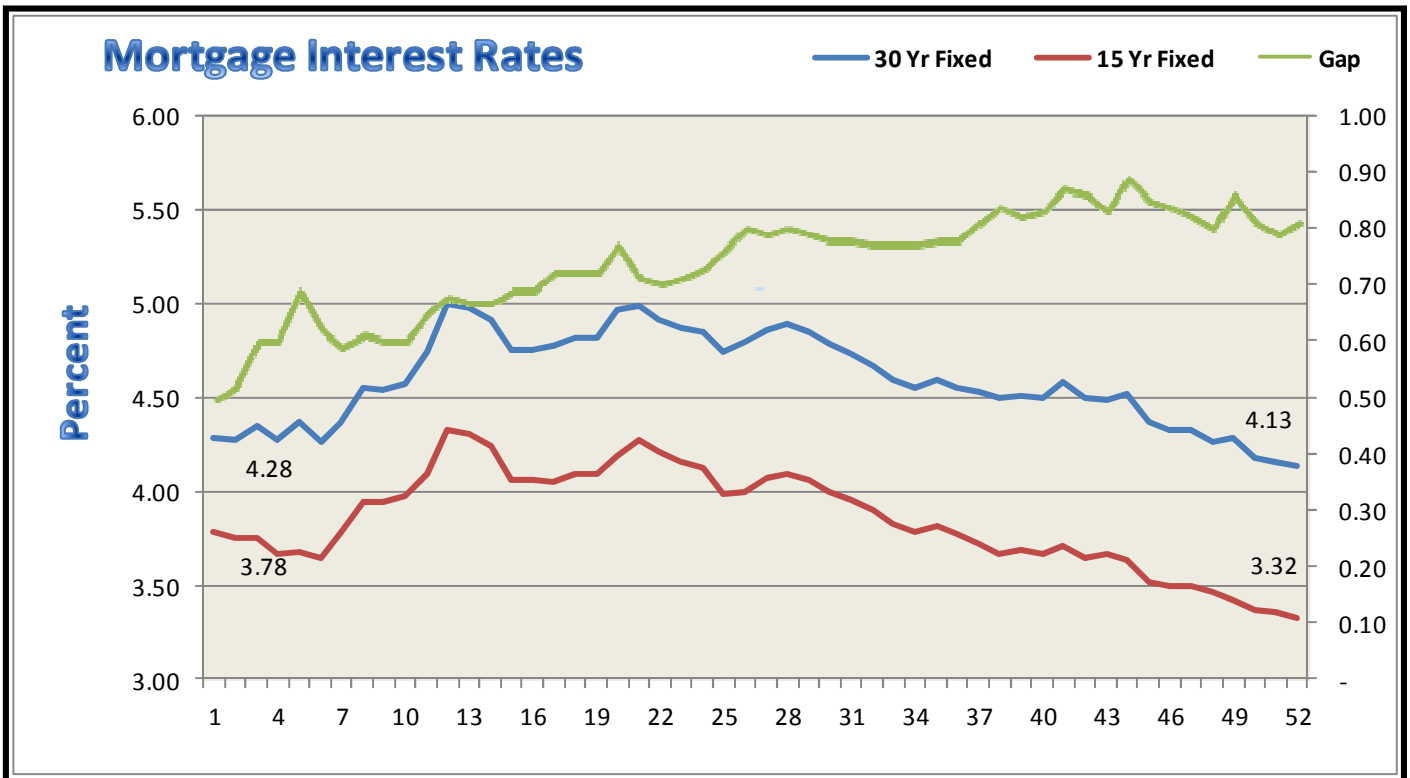


INWEST TITLE SERVICES

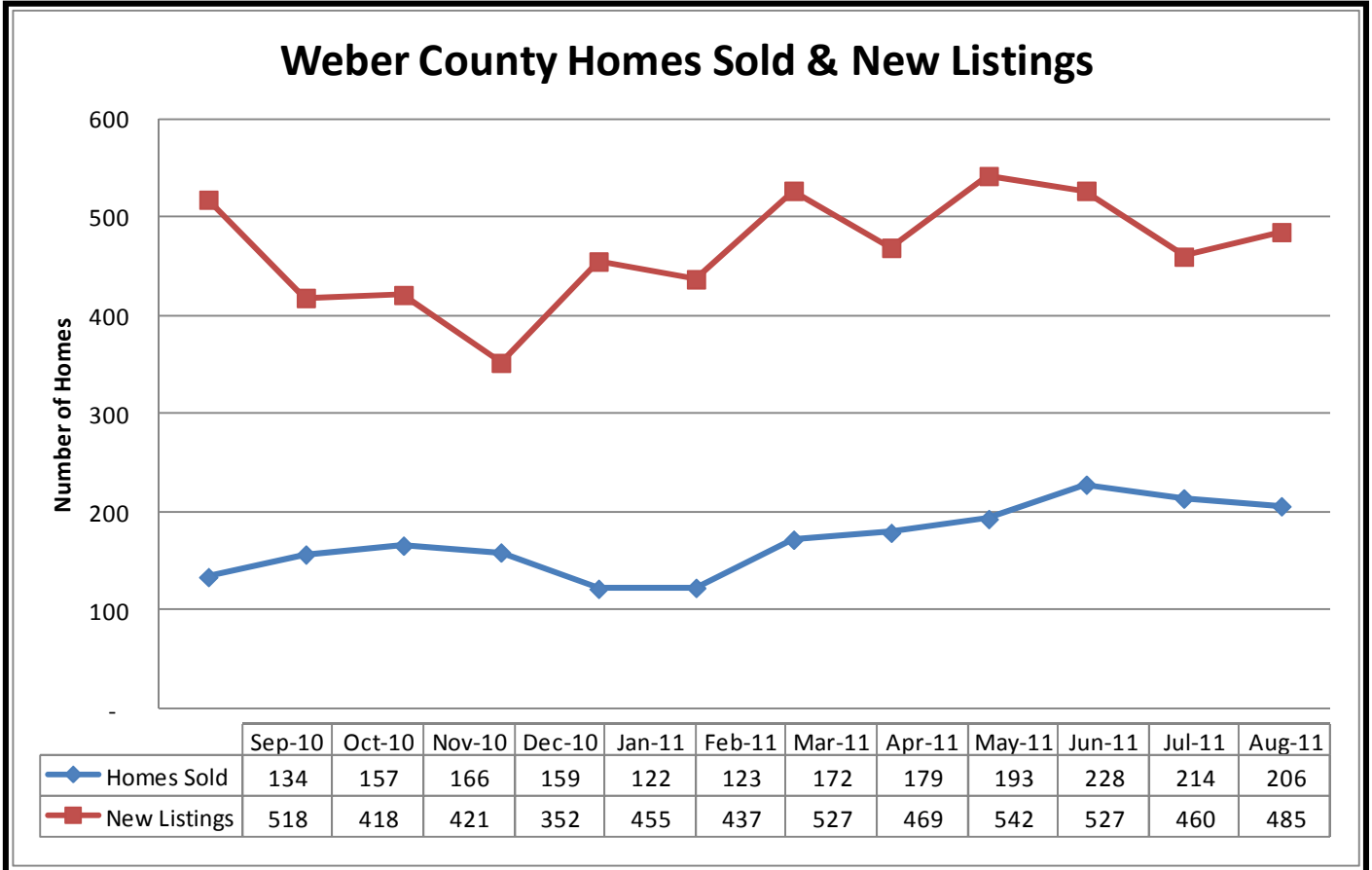
South Ogden	801 475-4410	Layton	801 773-9806
Salt Lake	801 264-0700	Tooele	435 882-5510
Orem State St.	801 932-1013	Spanish Fork	801 201-2848
Park City	435 649-6655	Cedar City	435 586-5601
St. George	435 634-5080	Bountiful	801 296-2611
West Haven (Corporate offices) 2037 West Commerce Way, Ogden, UT 84401 801 399-3544			



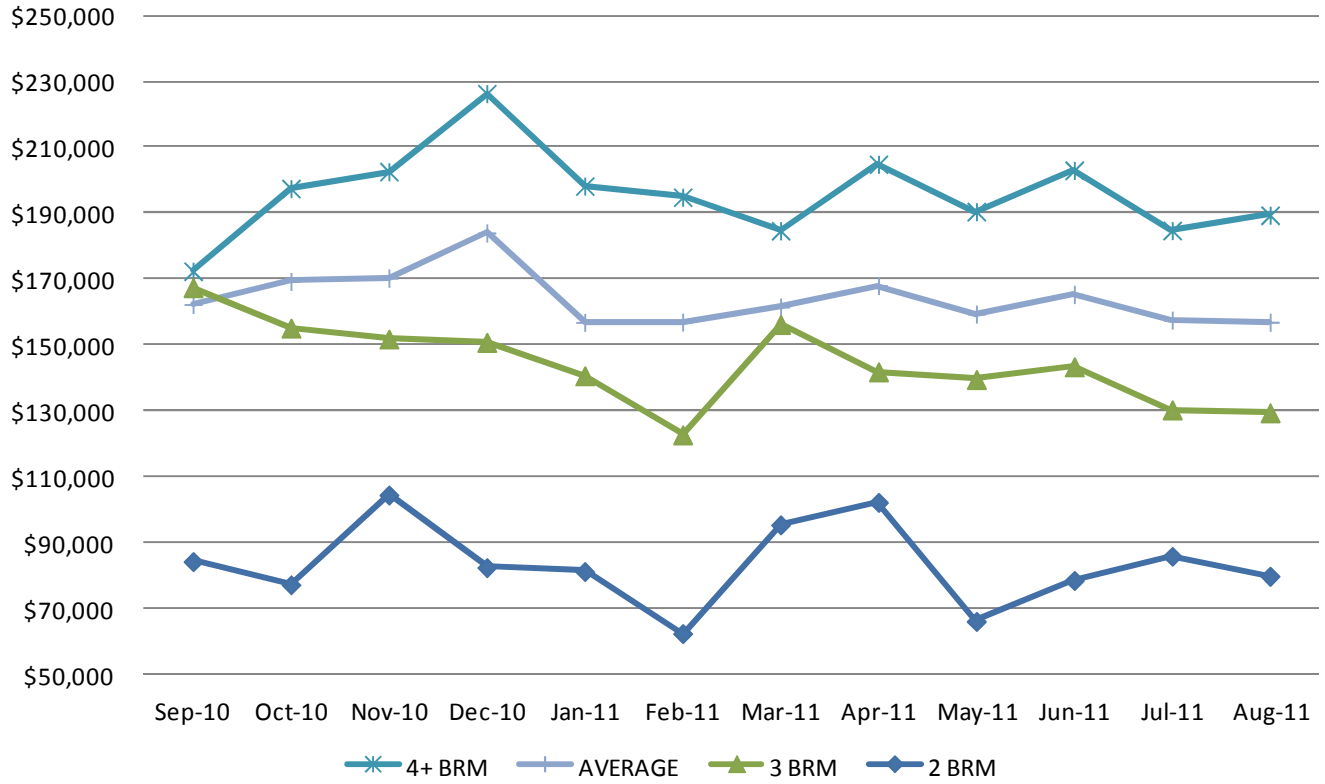
Seasonally adjusted indices from the Mortgage Bankers Association of America (MBA) shows the major loan application indices for the past 52 weeks. For the week ending September 11, 2011 the indices decreased an average of -0.6%. The Refi Index increased 2.2%, the Market Index increased 0.6%, and the Purchase Index decreased -4.7%. For more information go to www.mortgagebankers.org.



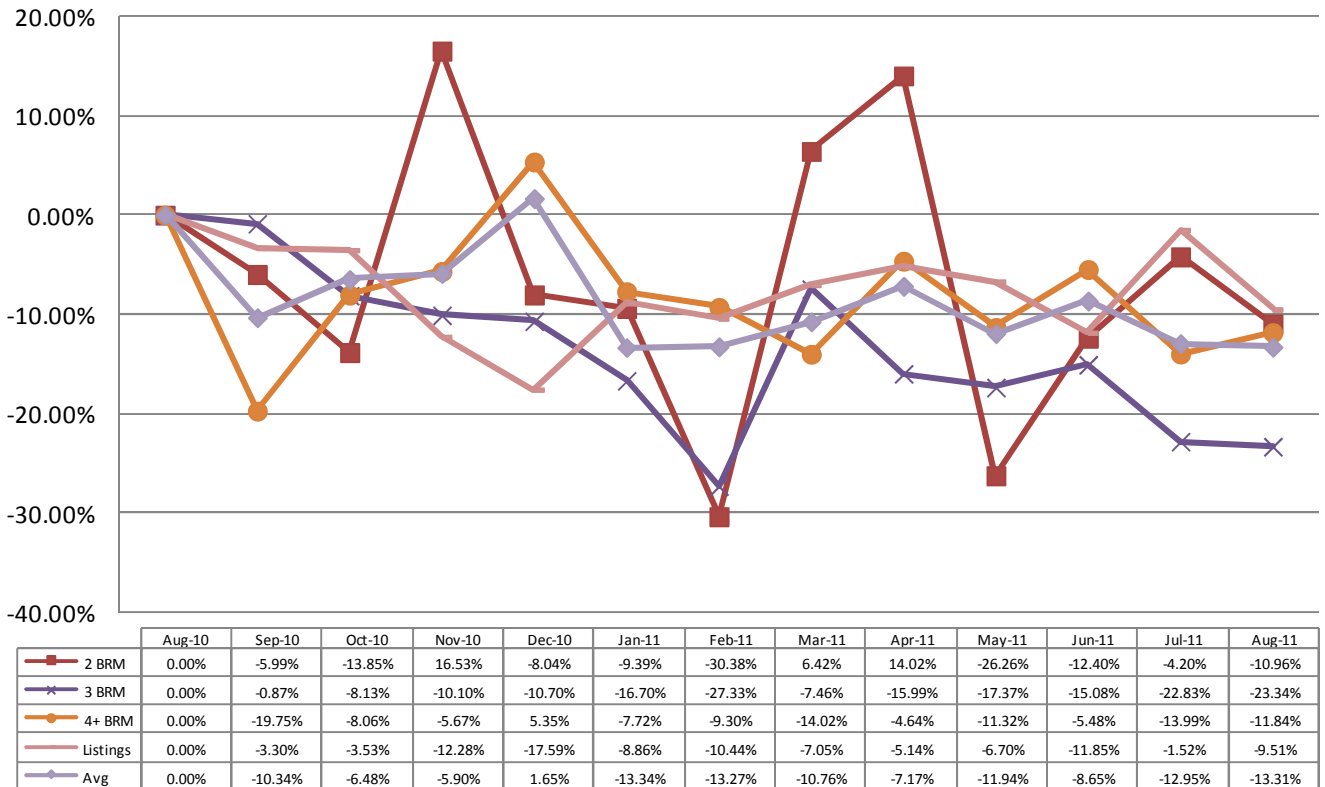
The Bankrate.com average mortgage interest rates are 4.13% and 3.32% for 30 year and 15 year mortgages, respectively.
 Freddie Mac reports mortgage rates from its weekly survey at 4.09% for a 30 year mortgage, 3.29% for the 15 year mortgage, and 2.82% for the 1-Yr. ARM.

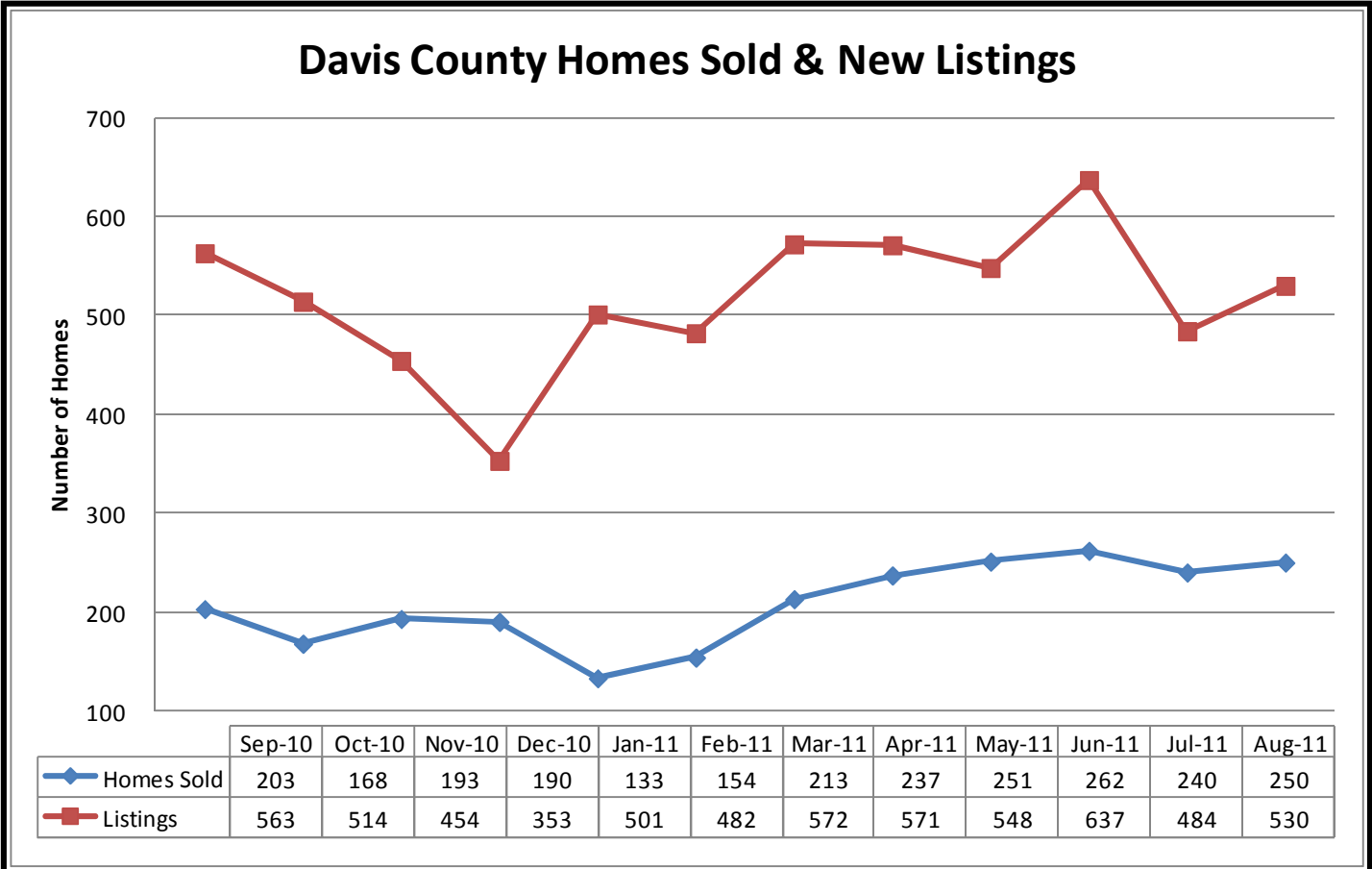
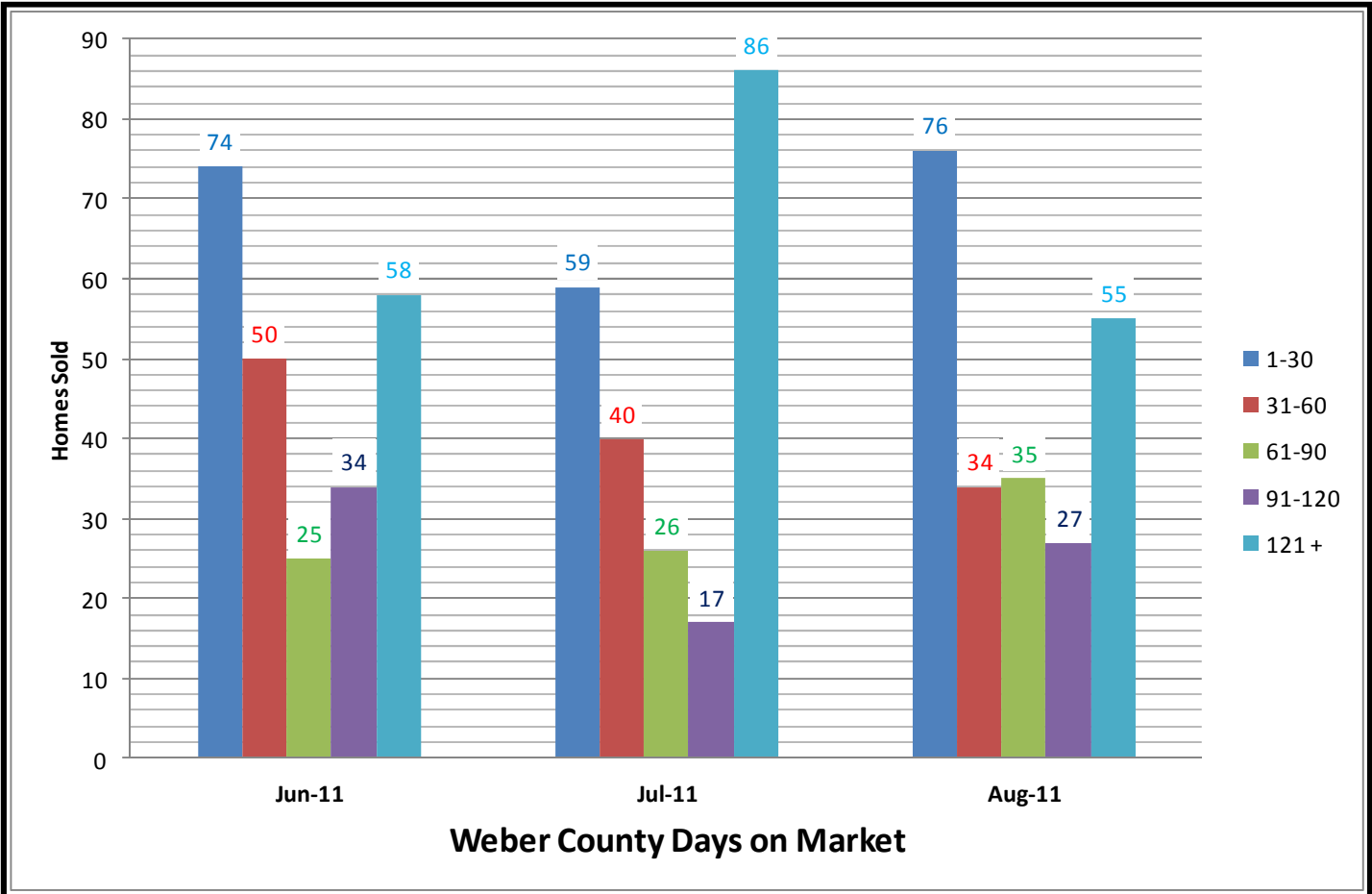


Weber County Average Sales Price

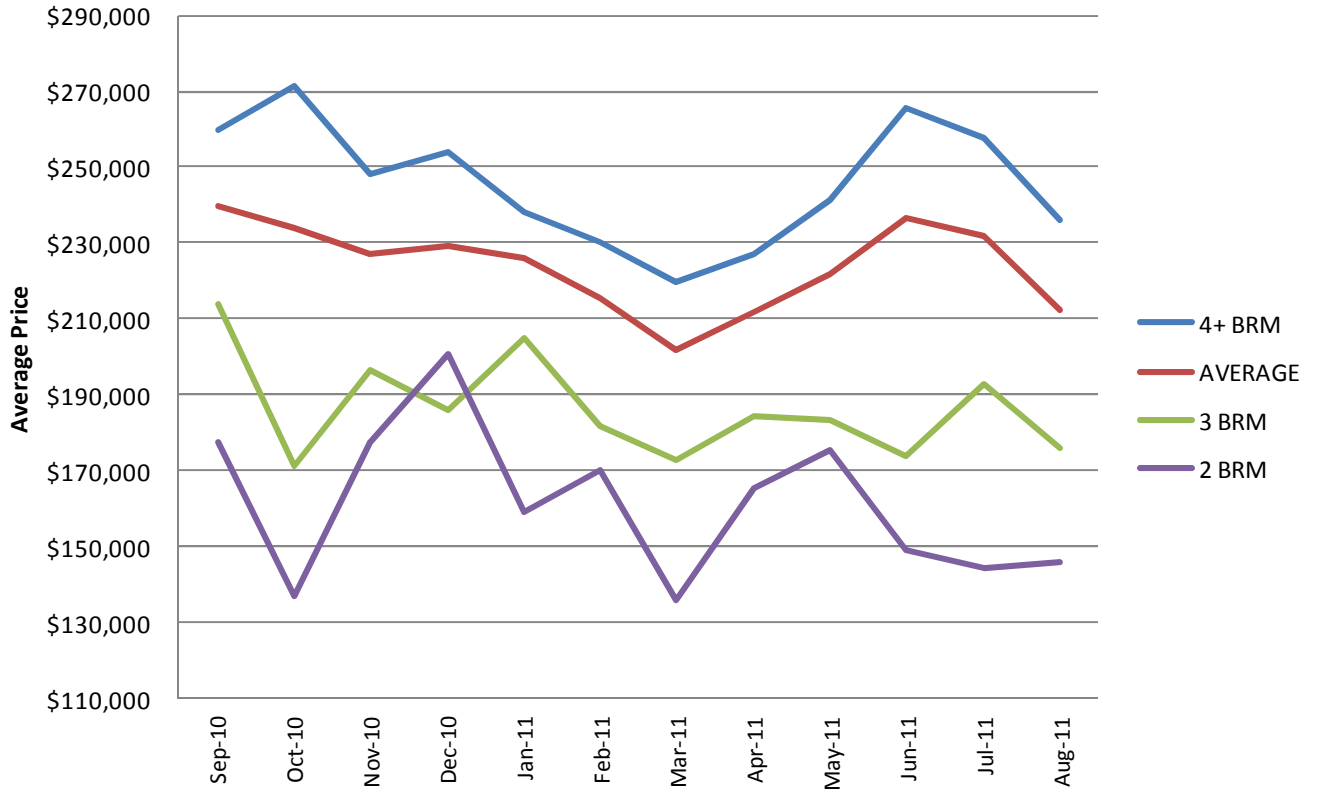


Weber County Percent Increase - Sales Price

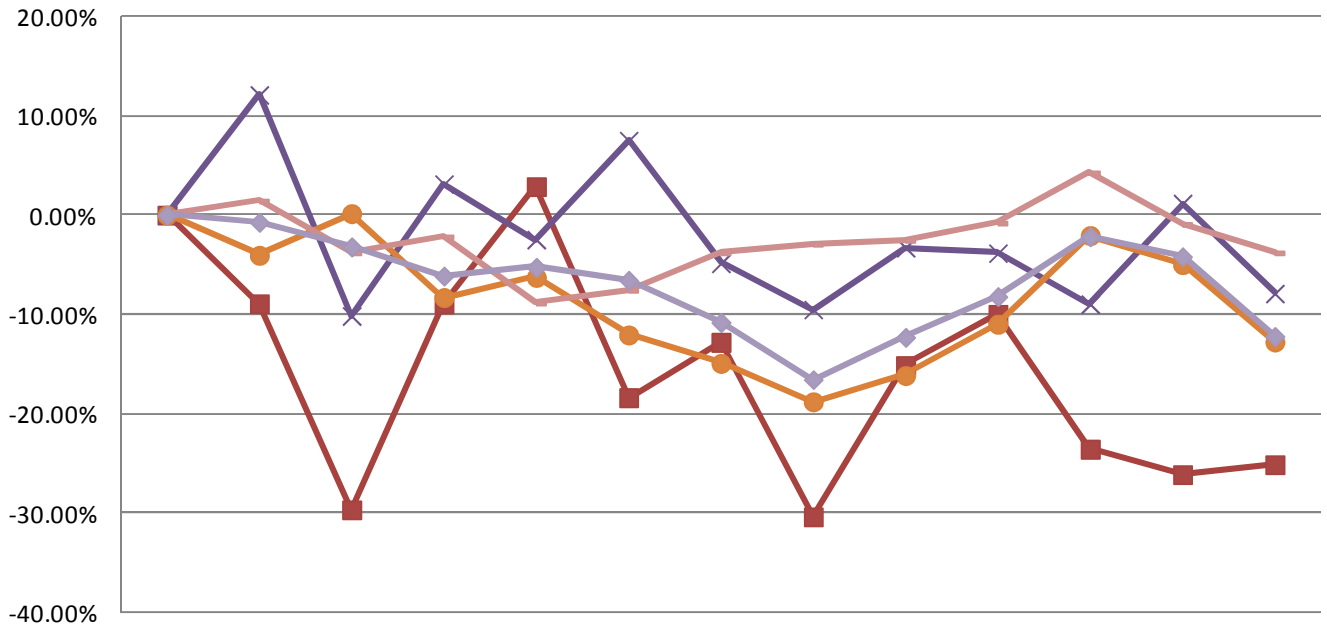




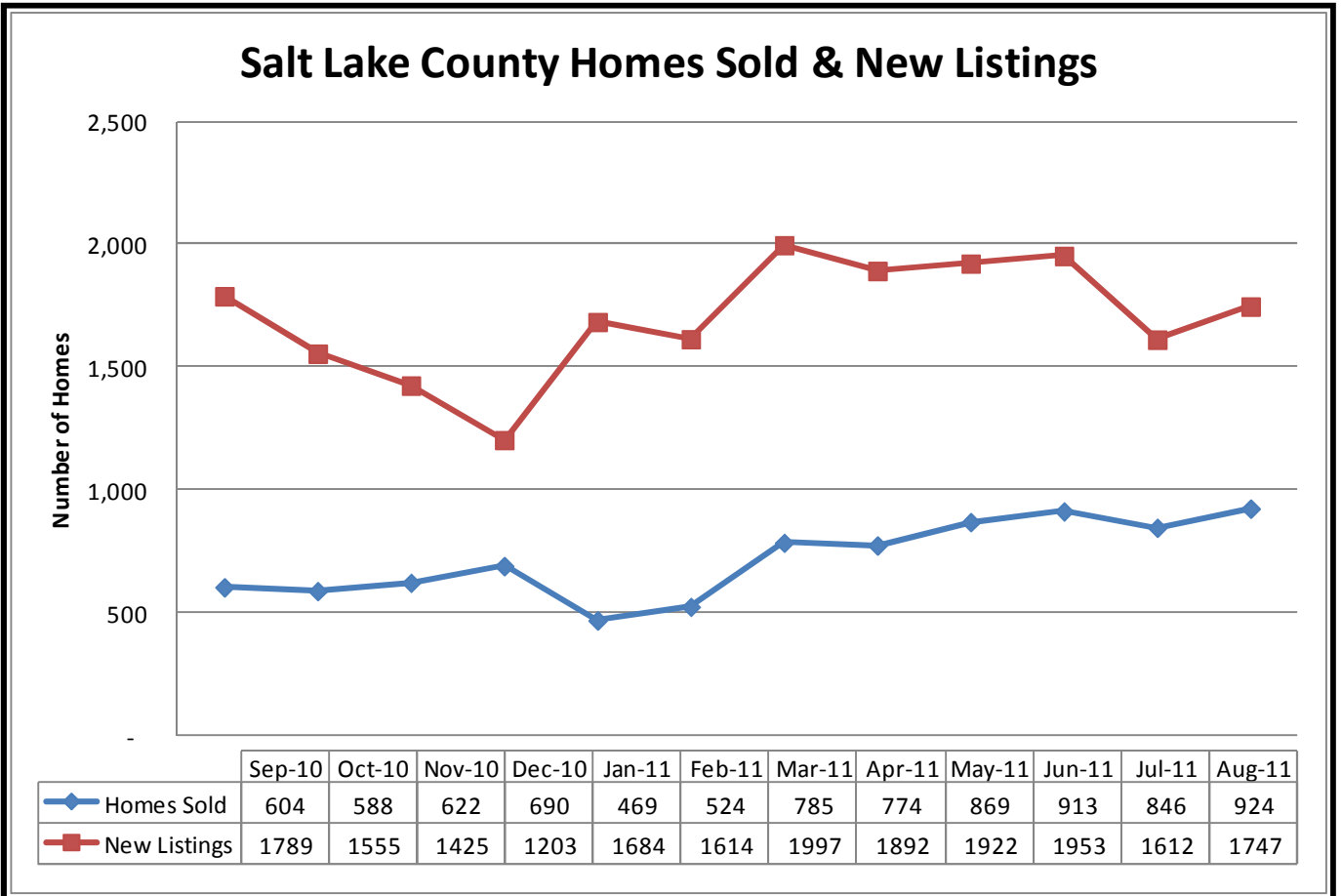
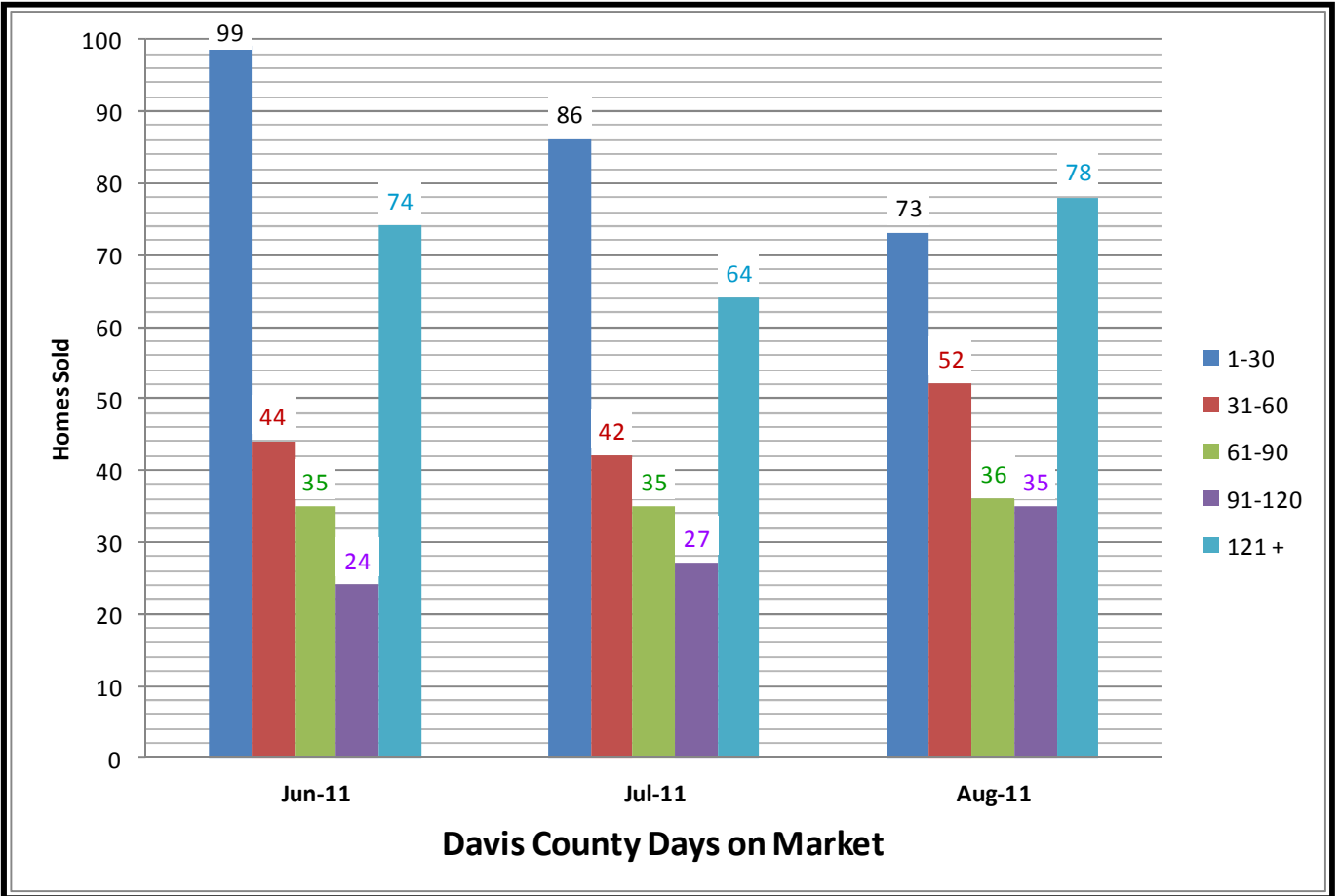
Davis County Average Sales Price



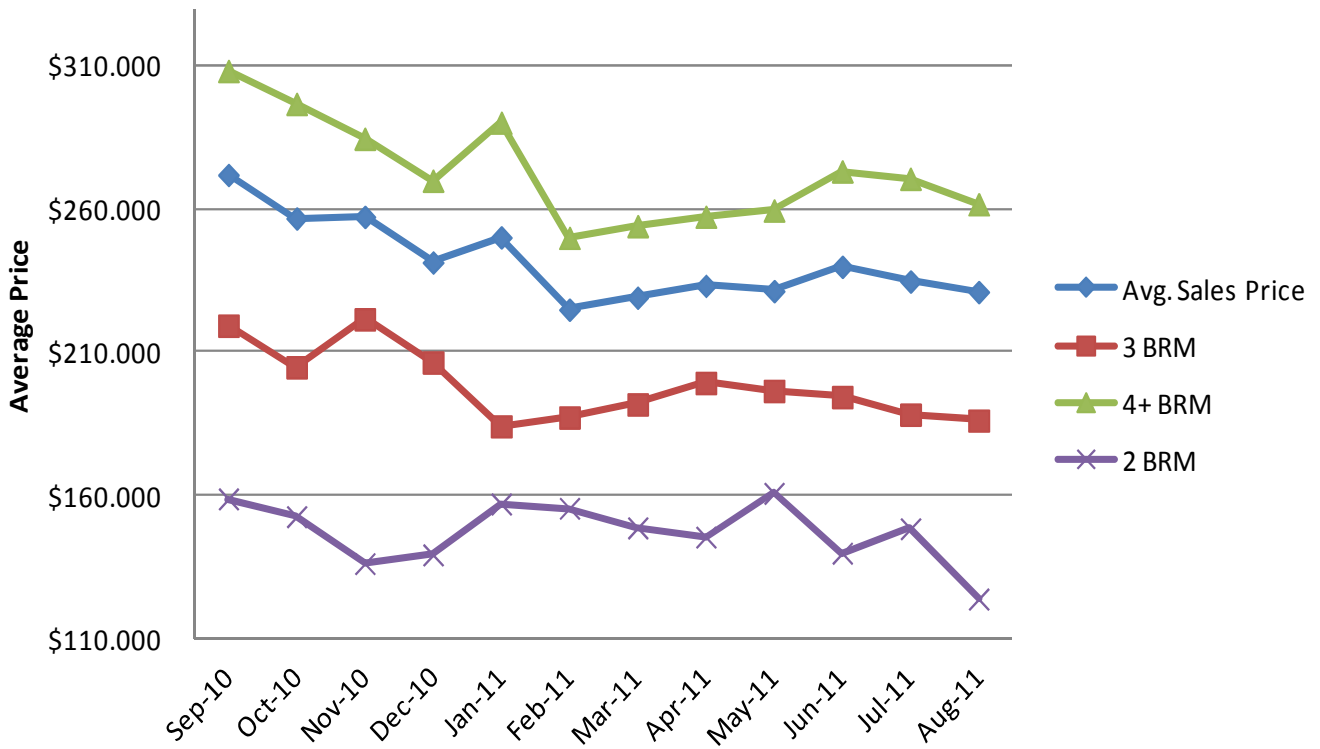
Davis County Percent Increase - Sales Price



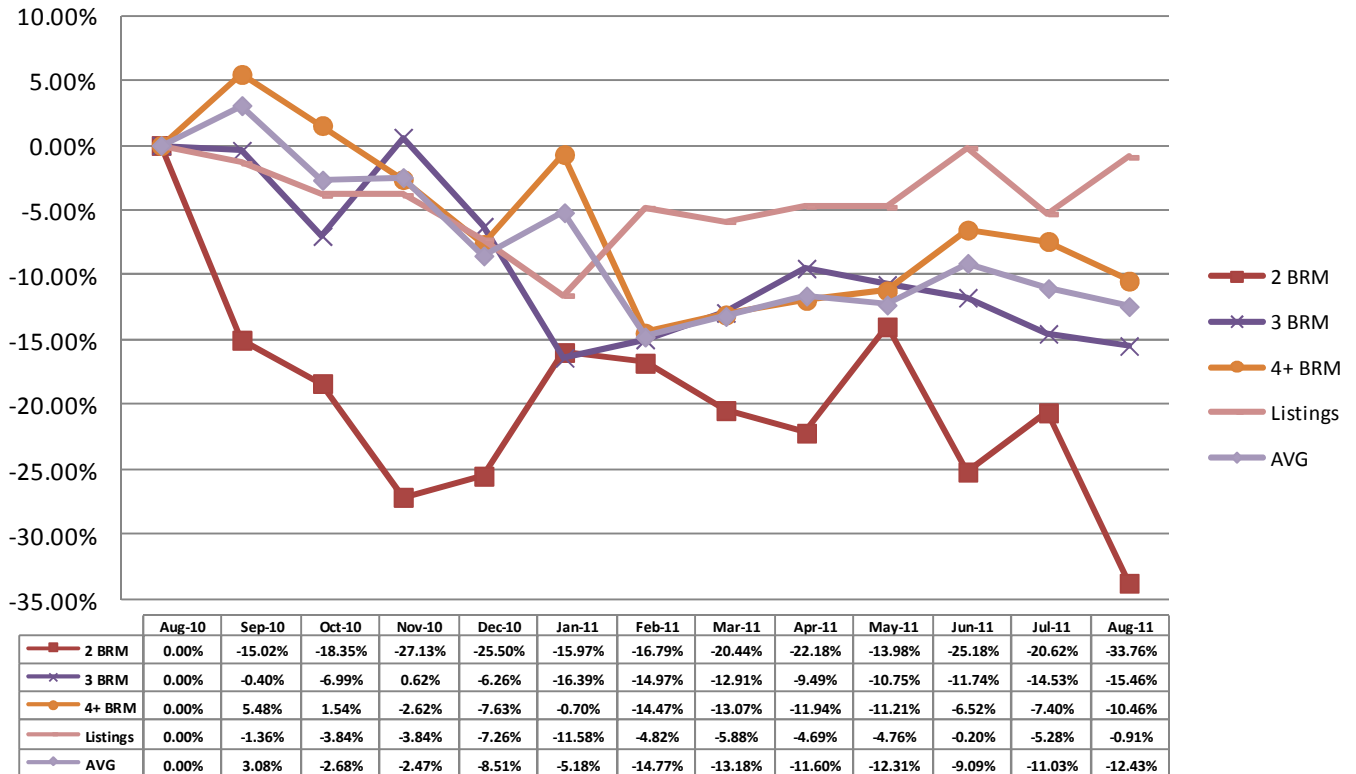
	Aug-10	Sep-10	Oct-10	Nov-10	Dec-10	Jan-11	Feb-11	Mar-11	Apr-11	May-11	Jun-11	Jul-11	Aug-11
2 BRM	0.00%	-8.93%	-29.70%	-8.96%	2.87%	-18.40%	-12.82%	-30.41%	-15.15%	-10.00%	-23.59%	-26.15%	-25.15%
3 BRM	0.00%	12.11%	-10.17%	3.13%	-2.47%	7.52%	-4.86%	-9.51%	-3.28%	-3.83%	-8.98%	1.17%	-7.90%
4+ BRM	0.00%	-4.05%	0.15%	-8.31%	-6.28%	-12.08%	-14.94%	-18.81%	-16.16%	-10.99%	-2.06%	-4.98%	-12.78%
Listings	0.00%	1.42%	-3.81%	-2.18%	-8.89%	-7.58%	-3.82%	-2.94%	-2.55%	-0.80%	4.27%	-0.93%	-3.81%
Avg	0.00%	-0.73%	-3.21%	-6.15%	-5.27%	-6.57%	-10.82%	-16.58%	-12.32%	-8.21%	-2.18%	-4.19%	-12.23%

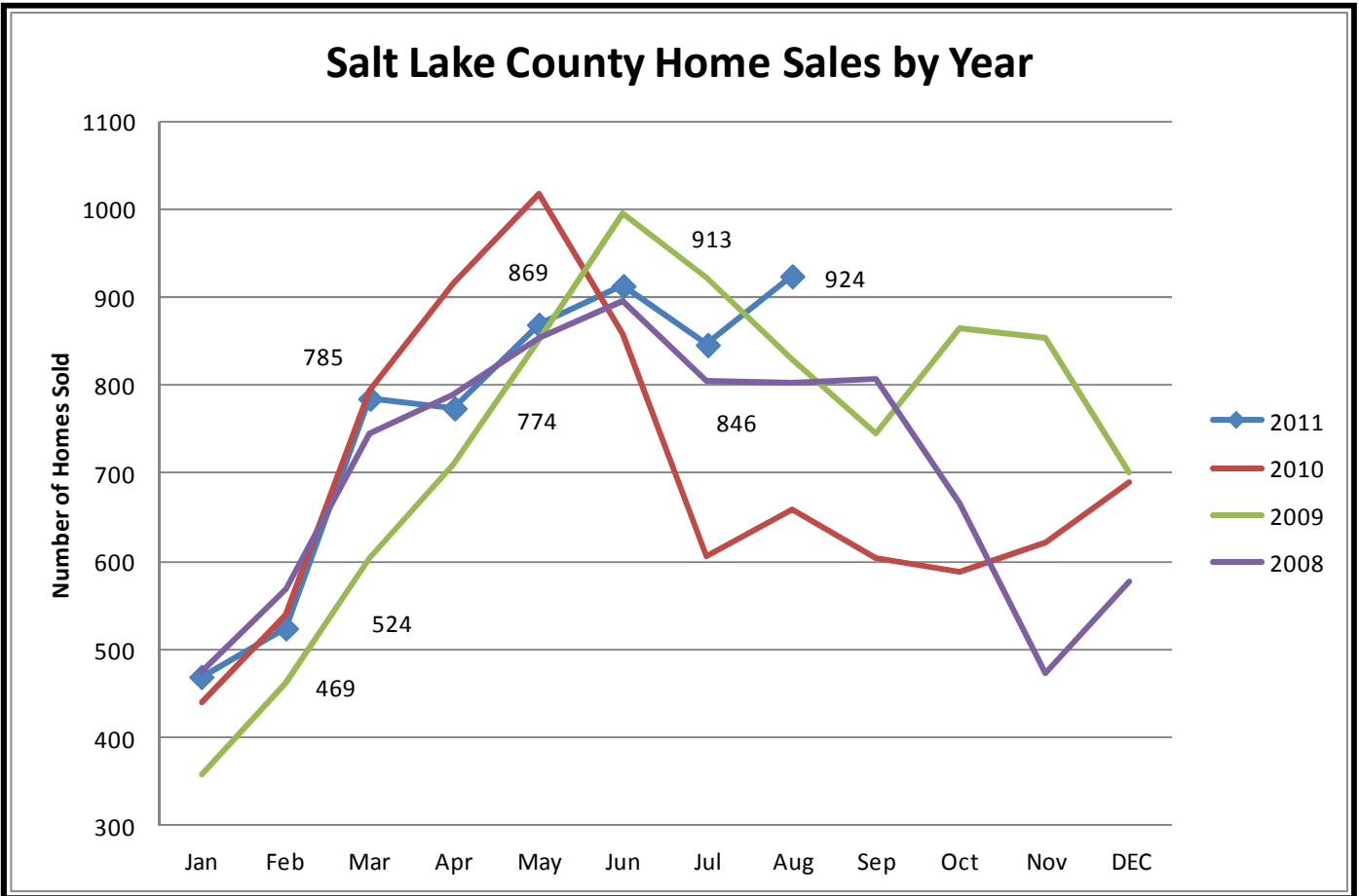
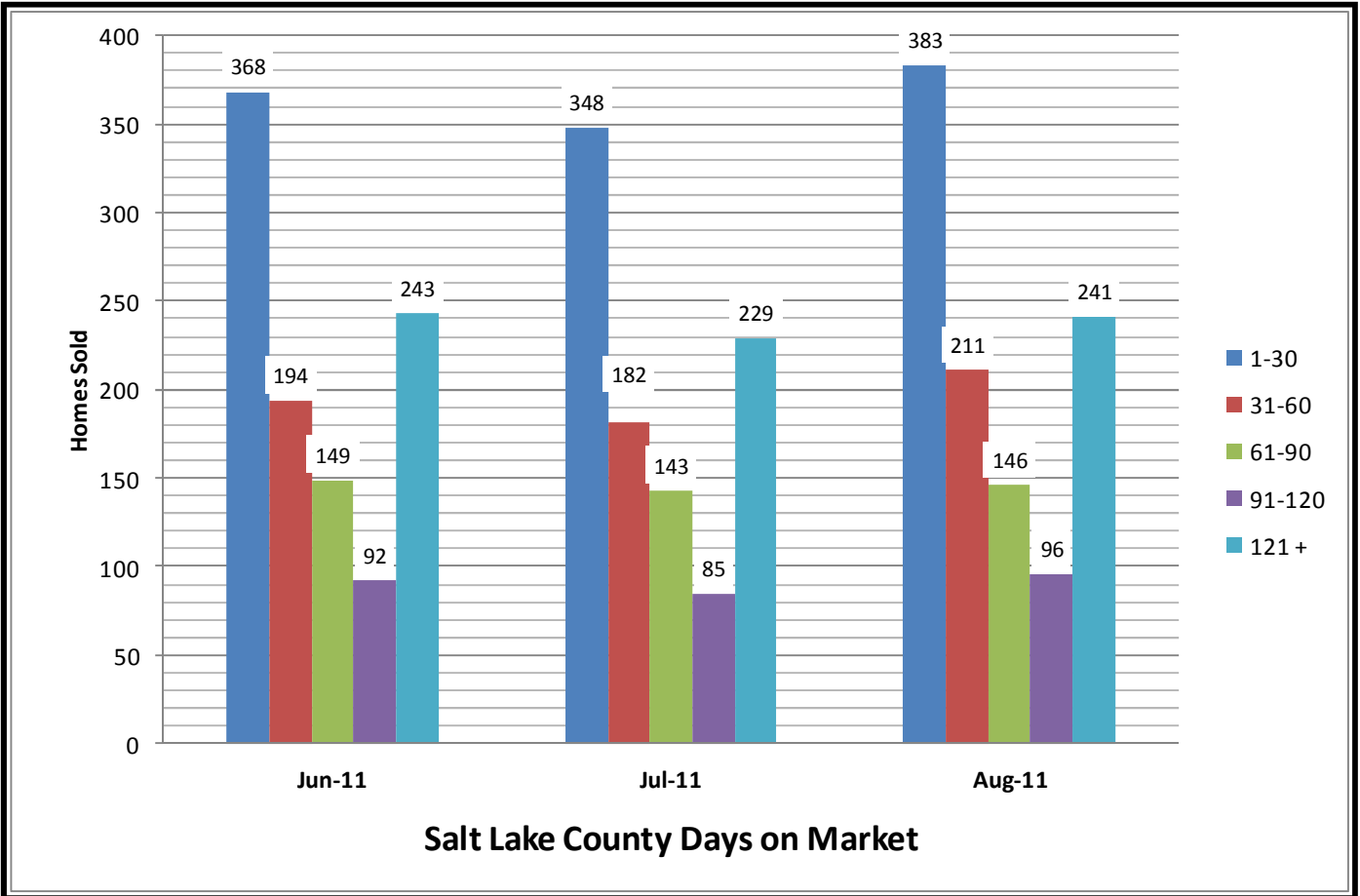


Salt Lake County Average Sales Price



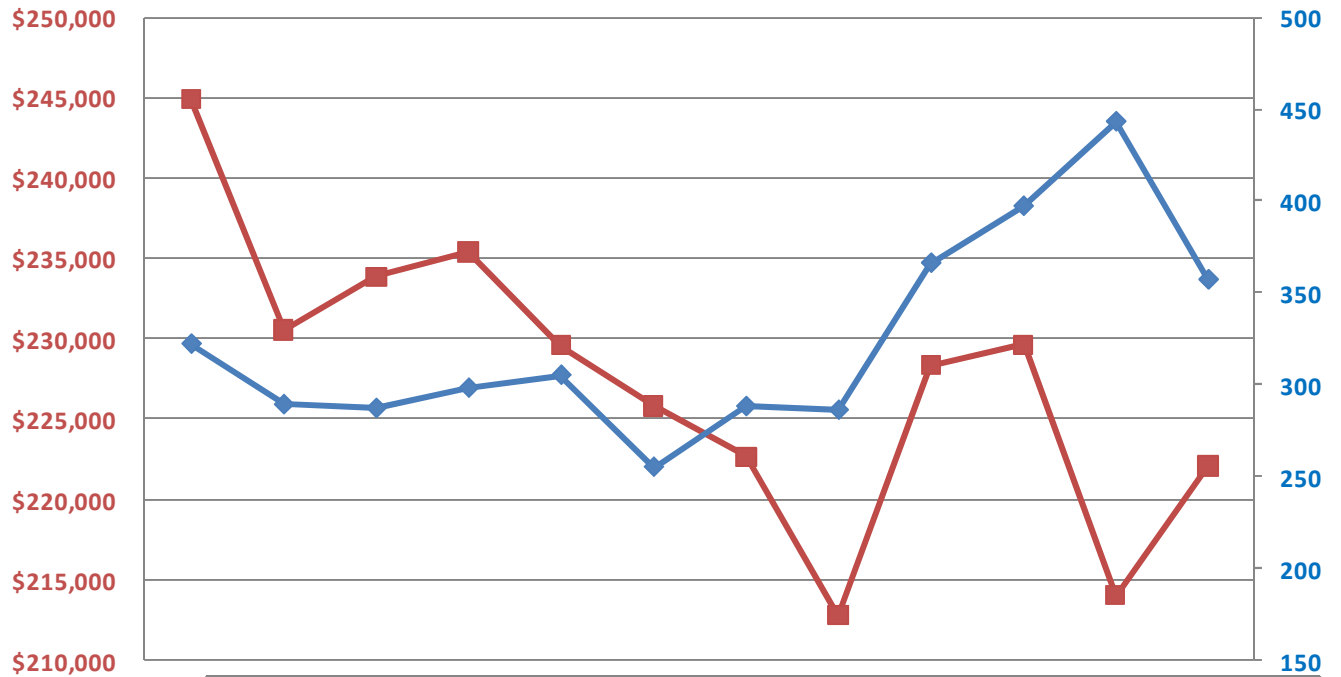
Salt Lake County Percent Increase - Sales Price





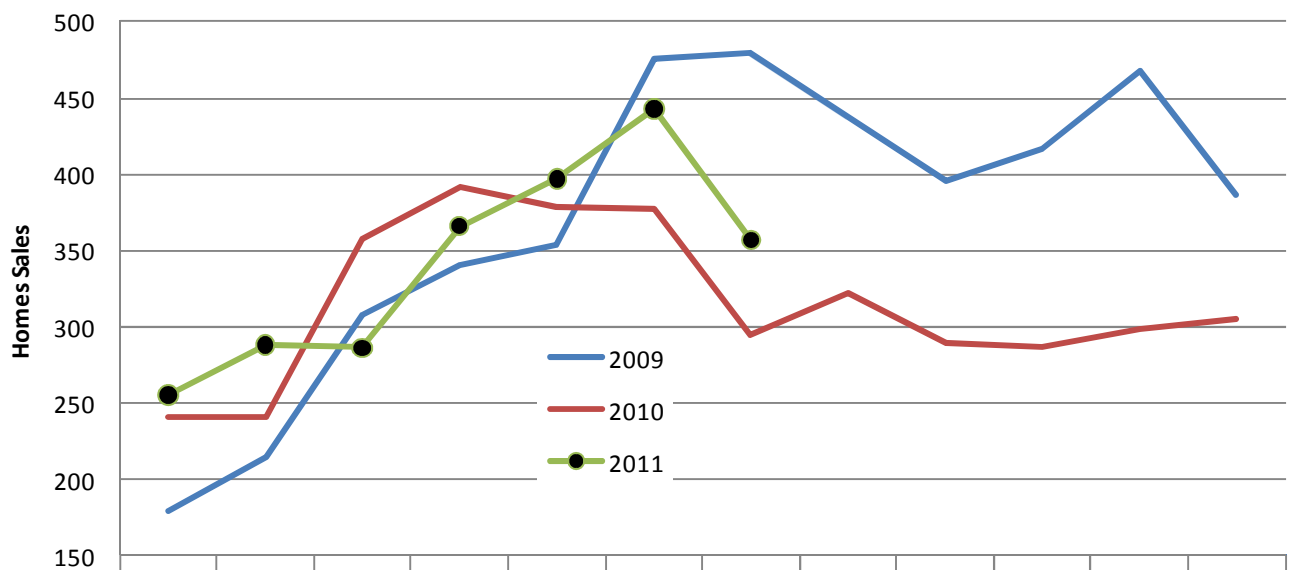
Go to www.investtitle.com for previous reports.

Utah County Single Family Homes



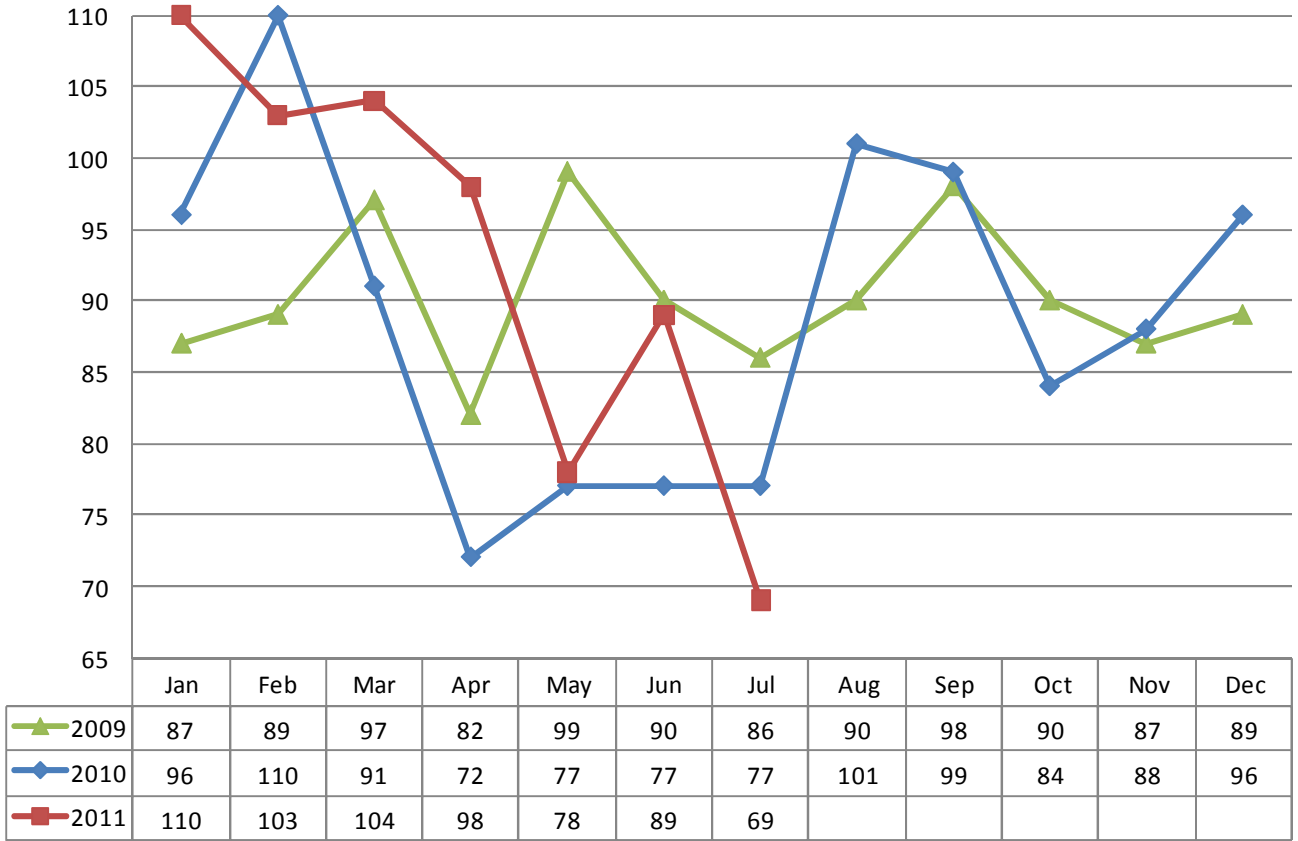
—■— Avg. Price	\$244,91	\$230,52	\$233,84	\$235,37	\$229,59	\$225,81	\$222,65	\$212,79	\$228,32	\$229,62	\$214,02	\$222,06
—◆— Homes Sold	322	289	287	298	305	255	288	286	366	397	443	357

Utah County Single Family Home Sales by Year

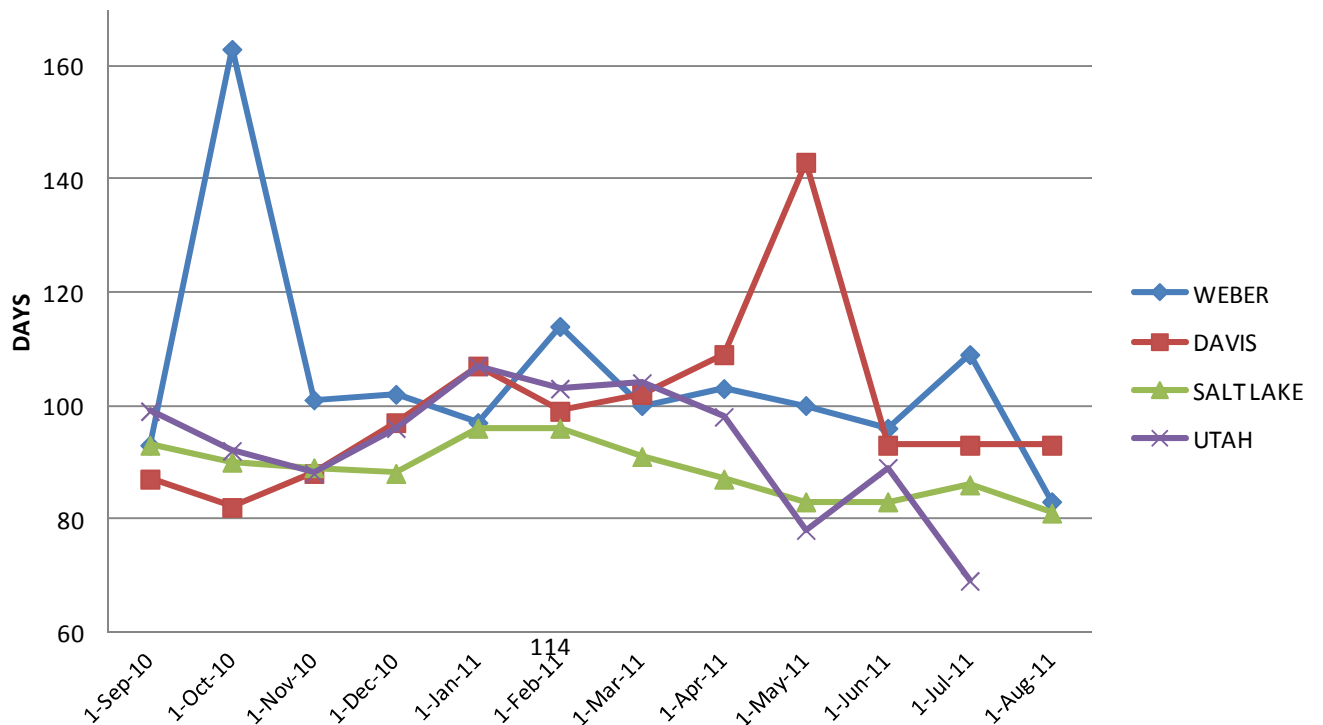


— 2009	179	215	308	340	353	475	479	438	395	416	468	387
— 2010	241	241	357	391	379	377	294	322	289	287	298	305
—●— 2011	255	288	286	366	397	443	357					

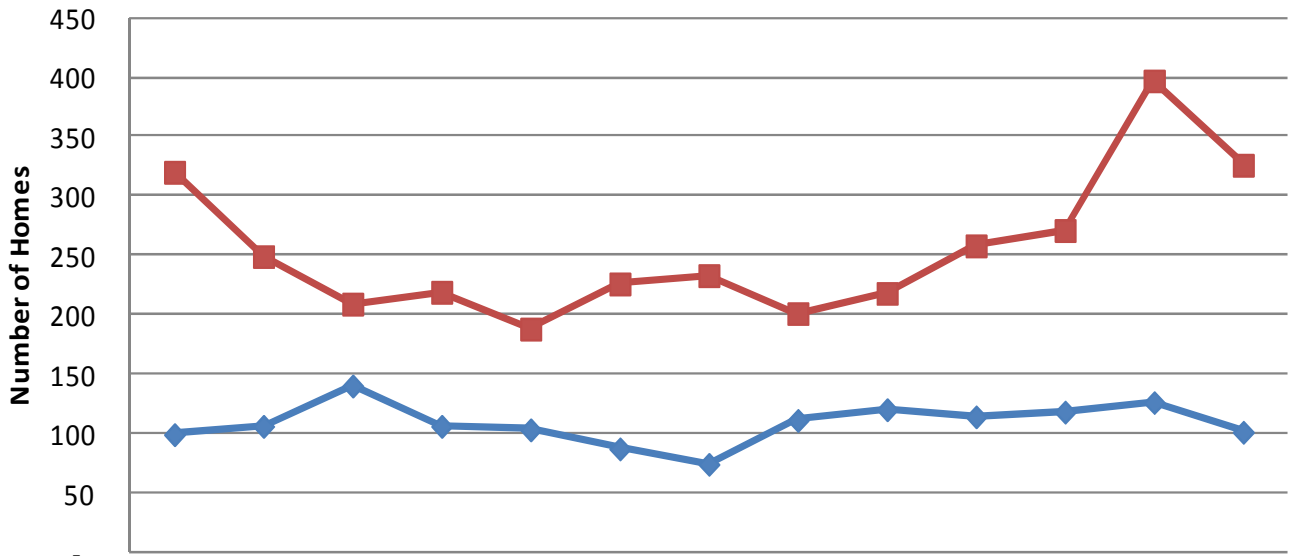
Utah County Average Days on Market



AVERAGE DAYS ON MARKET

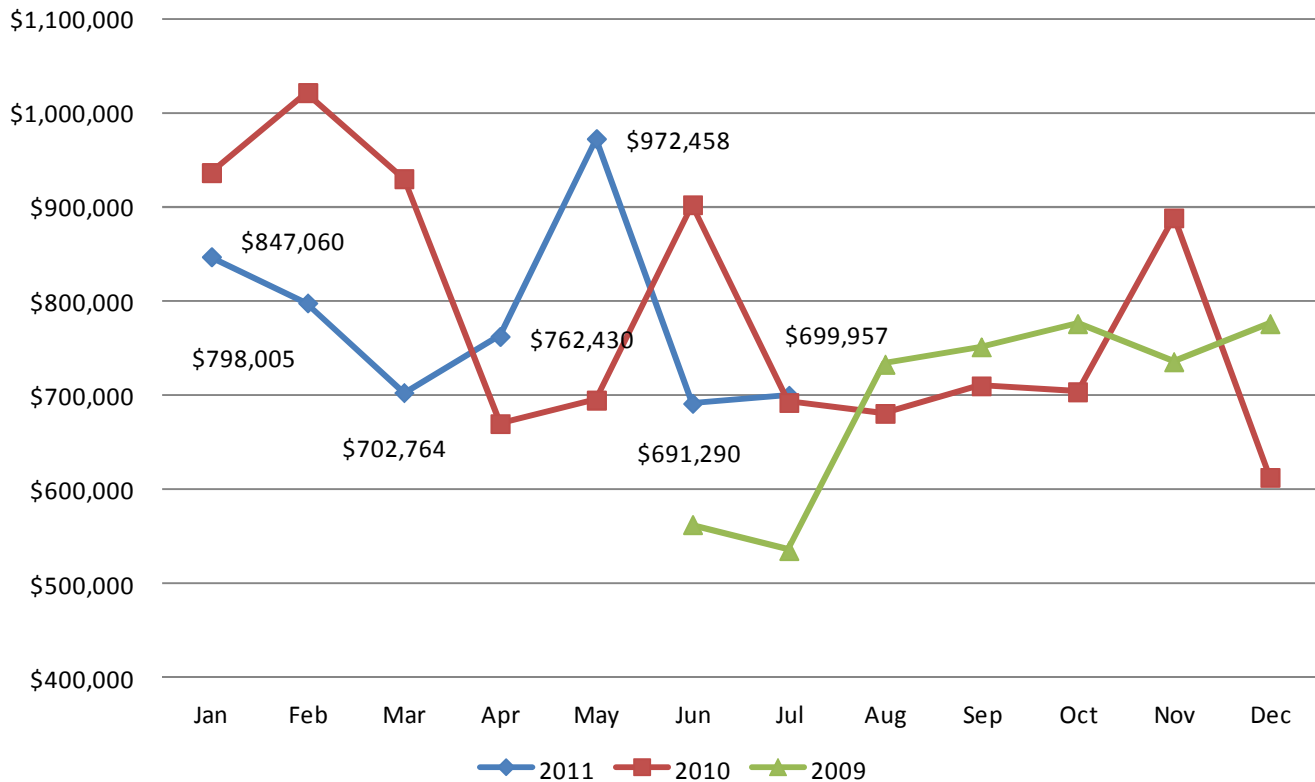


Summit County Homes Sold & New Listings

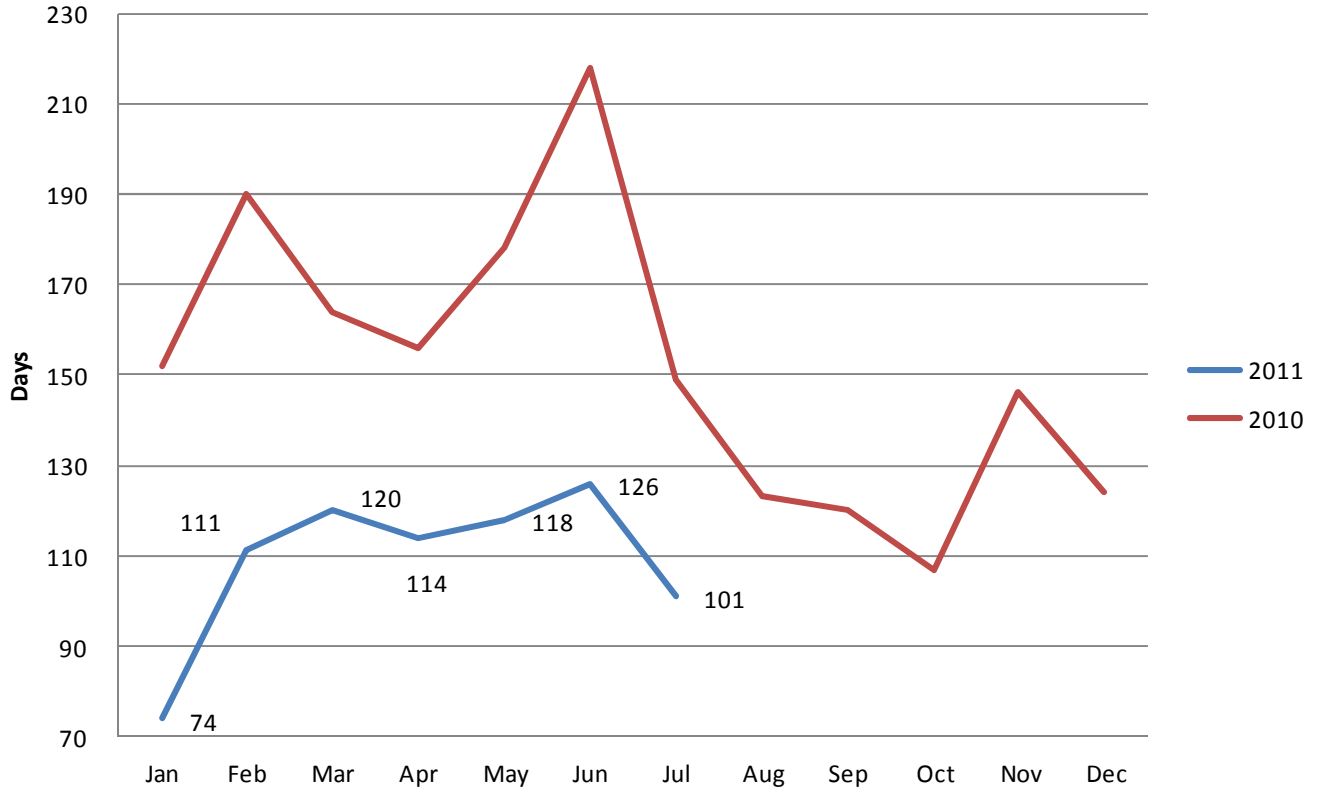


	Jul-10	Aug-10	Sep-10	Oct-10	Nov-10	Dec-10	Jan-11	Feb-11	Mar-11	Apr-11	May-11	Jun-11	Jul-11
Homes Sold	99	106	140	106	103	87	74	111	120	114	118	126	101
New Listings	320	249	209	219	188	226	233	201	218	258	271	397	326

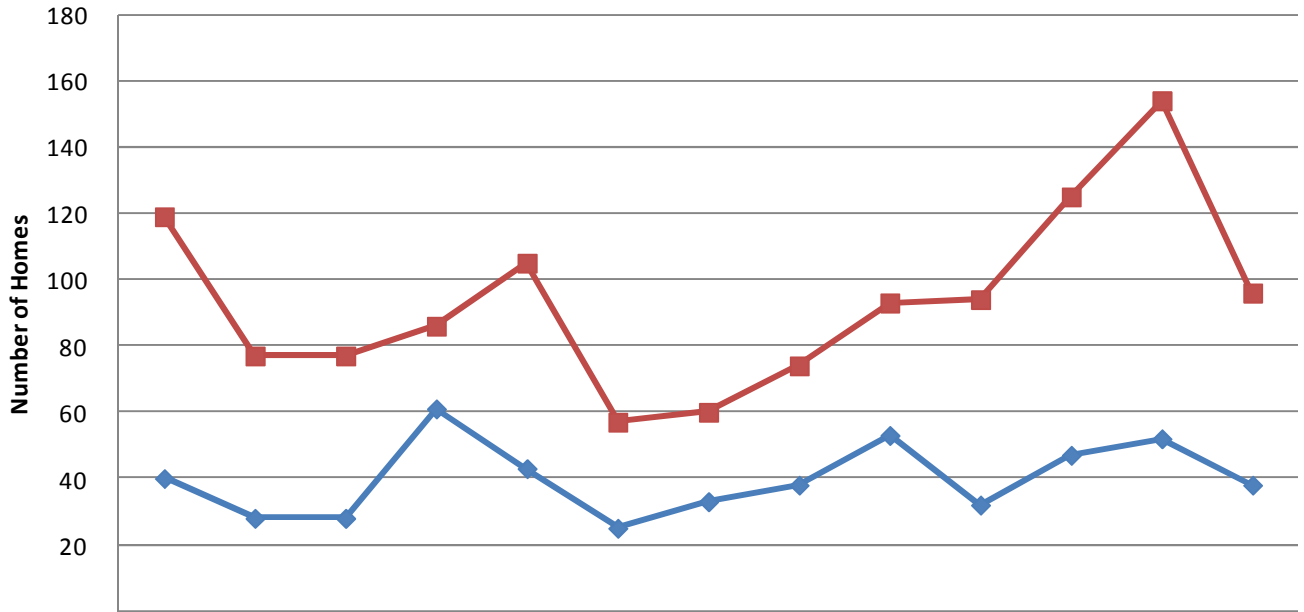
Summit County Average Sales Price



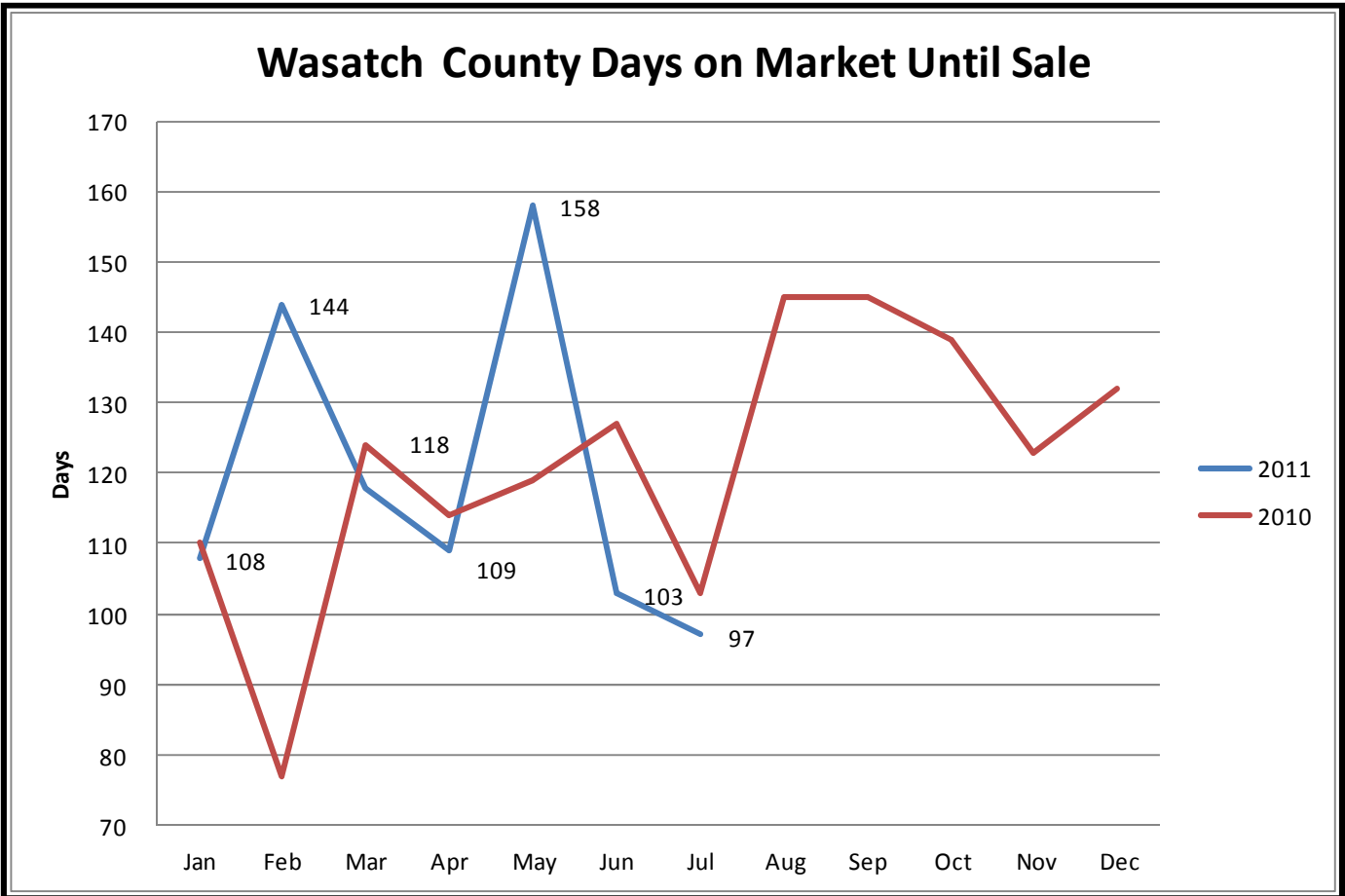
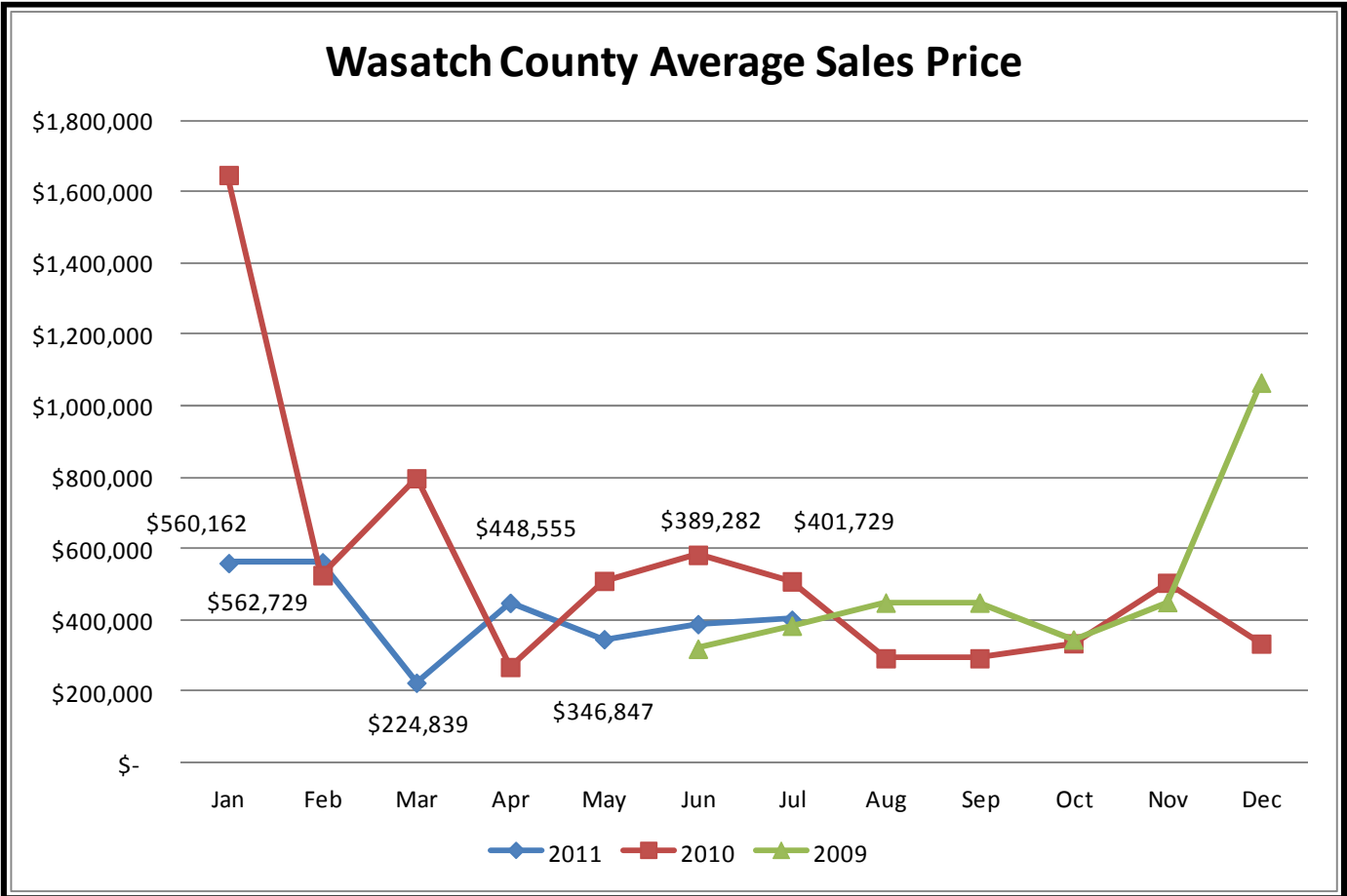
Summitt County Days on Market Until Sale



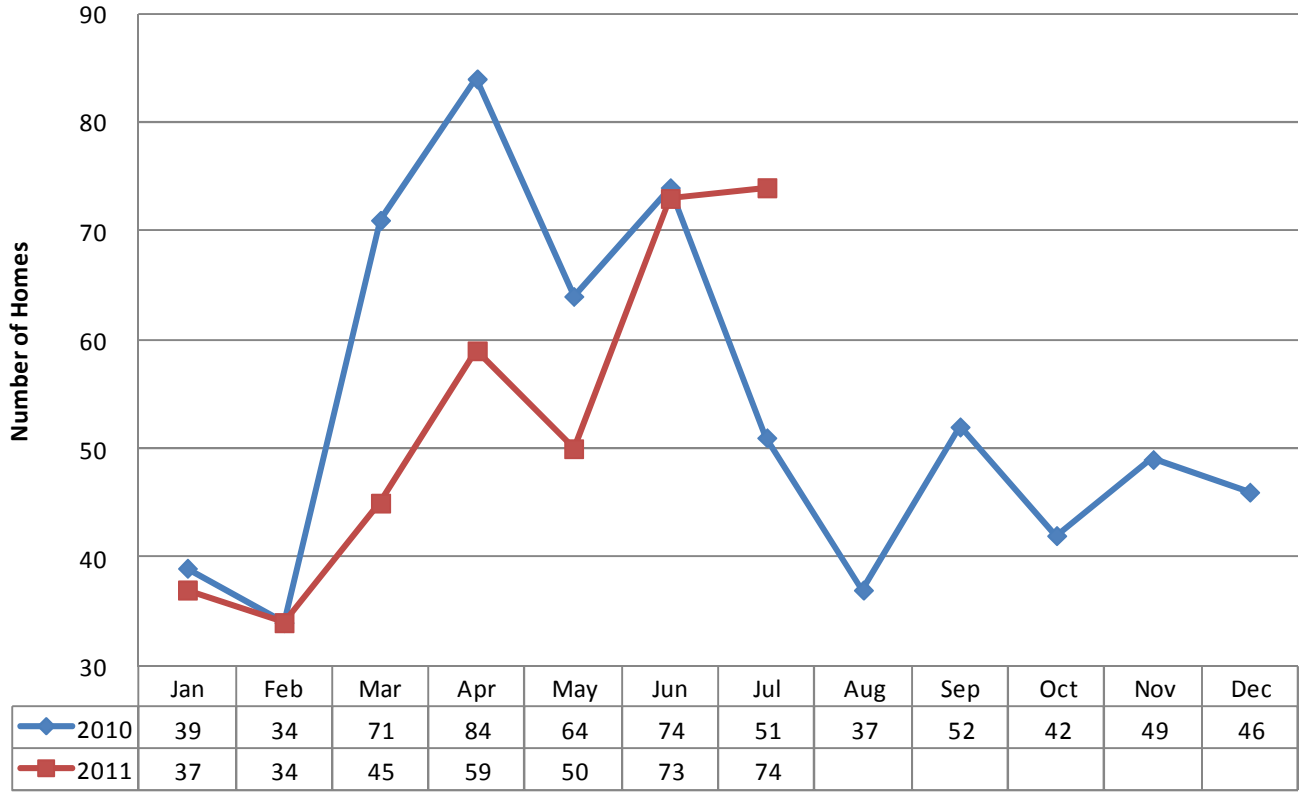
Wasatch County Homes Sold & New Listings



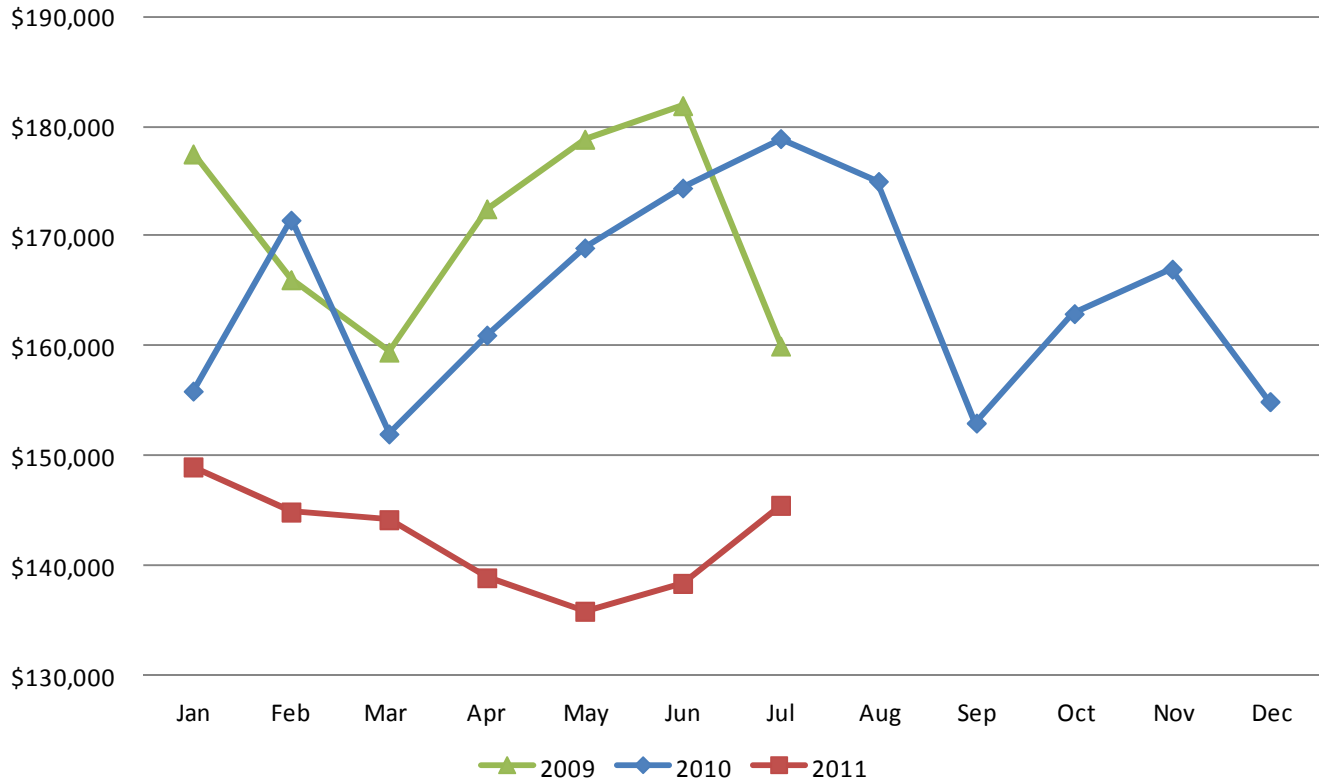
	Jul-10	Aug-10	Sep-10	Oct-10	Nov-10	Dec-10	Jan-11	Feb-11	Mar-11	Apr-11	May-11	Jun-11	Jul-11
◆ Homes Sold	40	28	28	61	43	25	33	38	53	32	47	52	38
■ New Listings	119	77	77	86	105	57	60	74	93	94	125	154	96



Tooele County Homes Sold



Tooele County Median Sales Price



You are receiving this e-mail Market Data Report from Inwest Title Services, Inc. as a means to keep you posted on local, state, and national market trends.

It is our pleasure to compile and supply you with this information on a regular basis. If you wish to discontinue receiving this report, please respond with “Unsubscribe” in the Subject Line.

