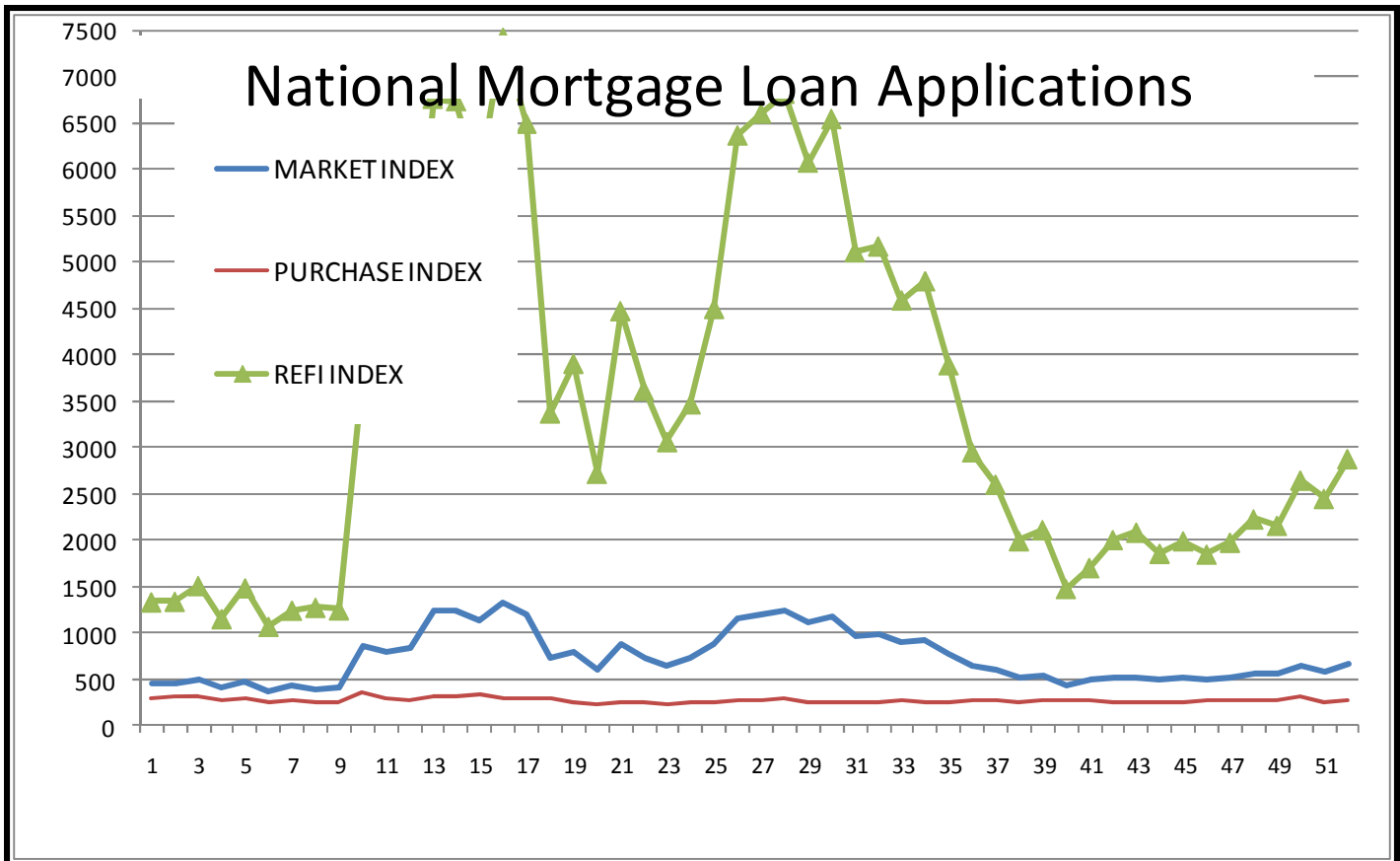
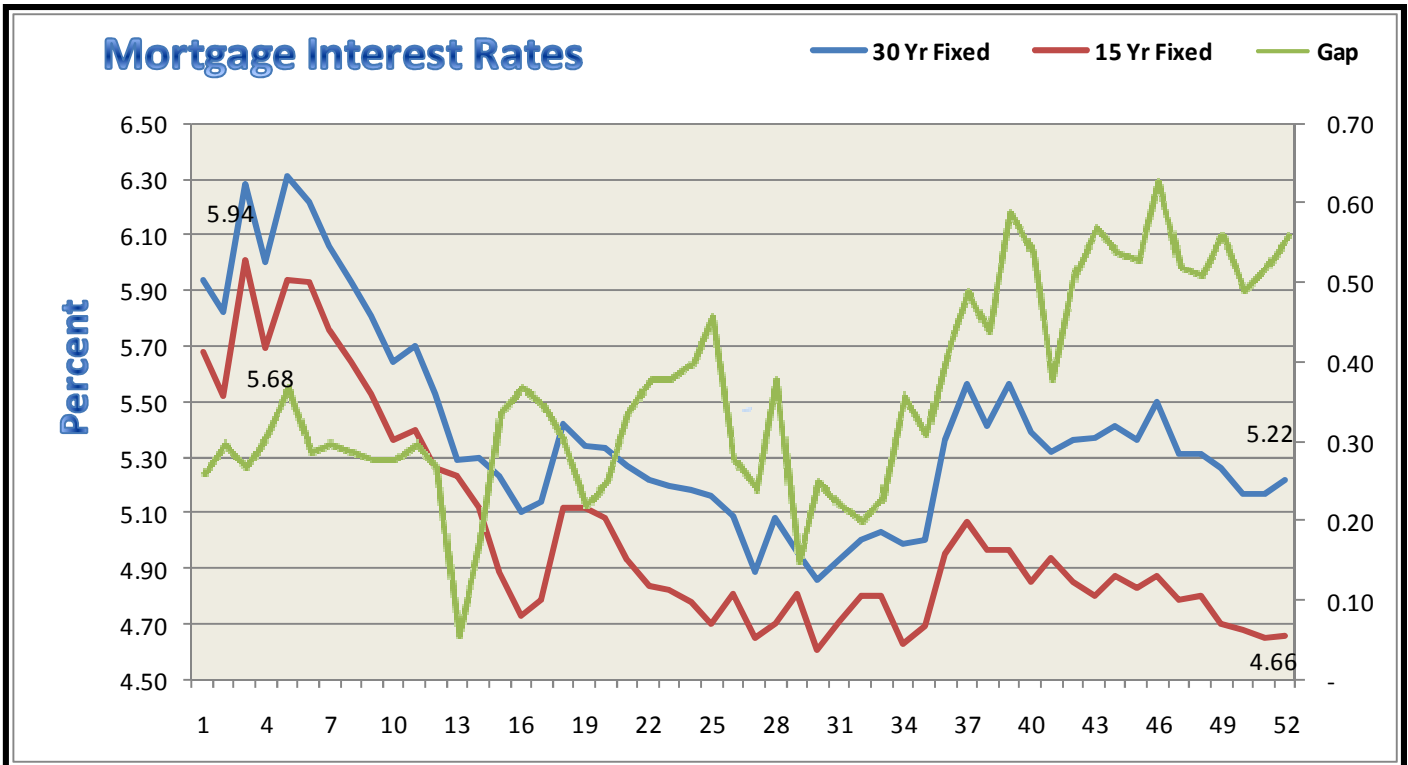


INWEST TITLE SERVICES

South Ogden	801 475-4410	Layton	801 773-9806
Salt Lake	801 264-0700	Tooele	435 882-5510
Grantsville	435 884-3221	Orem State St.	801 932-1013
Orem Center St.	801 221-9277	Spanish Fork	801 794-2115
Park City	435 649-6655	Cedar City	435 586-5601
St. George	435 634-5080		
West Haven (Corporate offices) 2037 West Commerce Way, Ogden, UT 84401 - 801 399-3544			

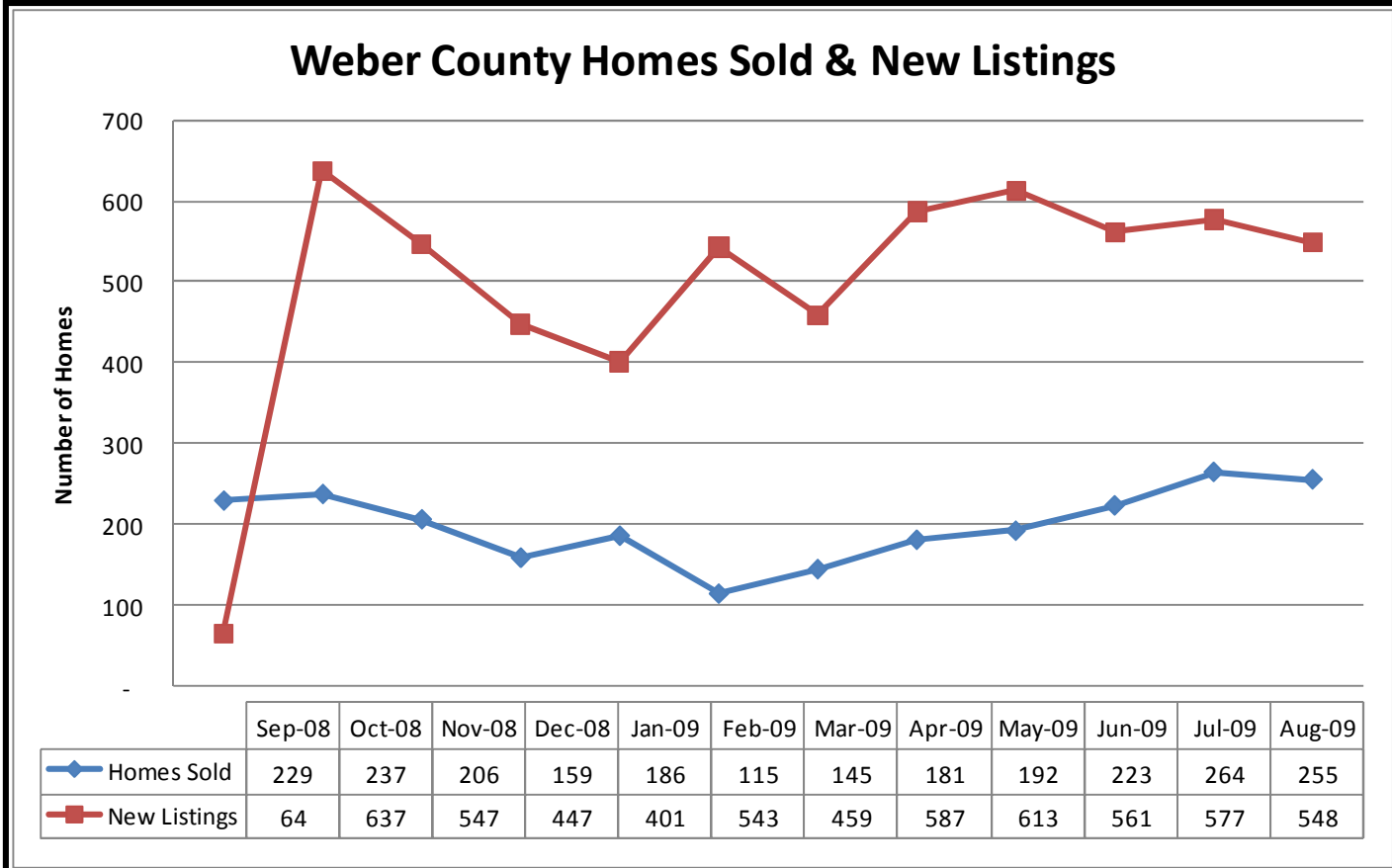


Seasonally adjusted indices from the Mortgage Bankers Association of America (MBA) shows the major loan application indices for the past 52 weeks. For the week ending September 18, 2009 the indices increased an average of 8.9%. The Refi Index increased 5.6%, the Market Index increased 12.8%, and the Purchase Index increased 5.6%. For more information go to www.mortgagebankers.org.

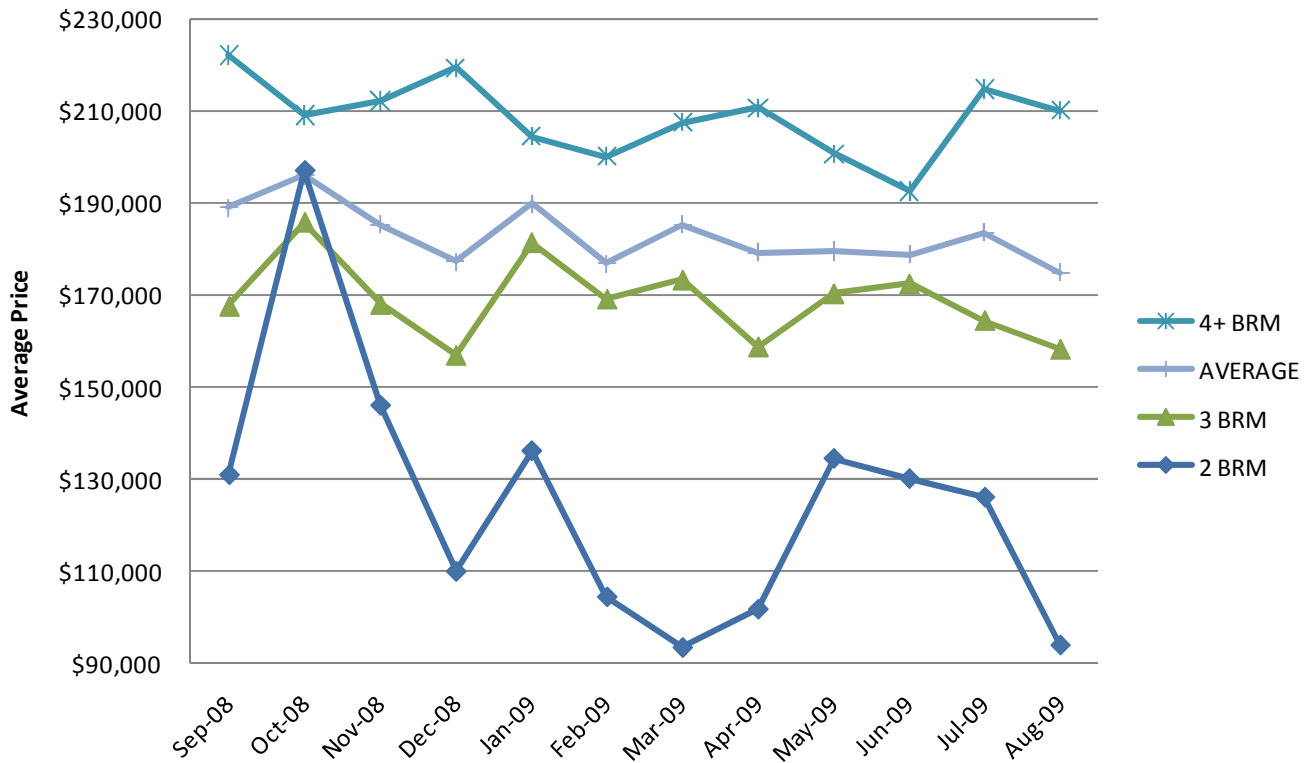


The Bankrate.com average mortgage interest rates are 5.22% and 4.66 for 30 year and 15 year mortgages, respectively.

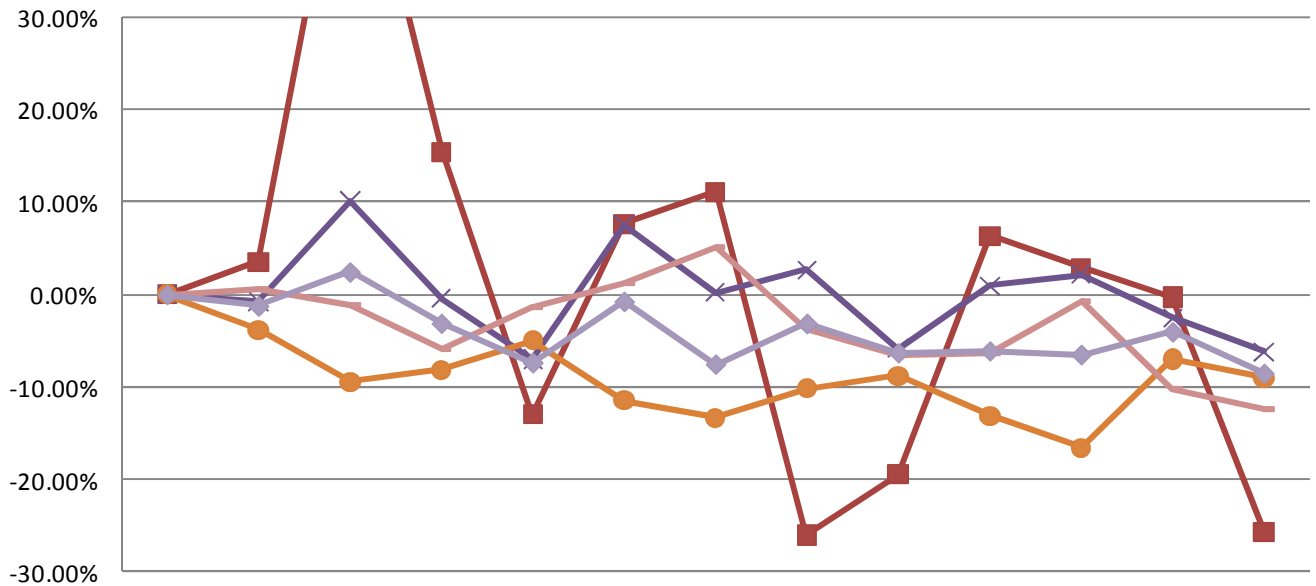
Freddie Mac reports mortgage rates from its weekly survey at 5.04% for a 30 year mortgage, 4.46% for the 15 year mortgage, and 4.52% for the 1 year ARM.



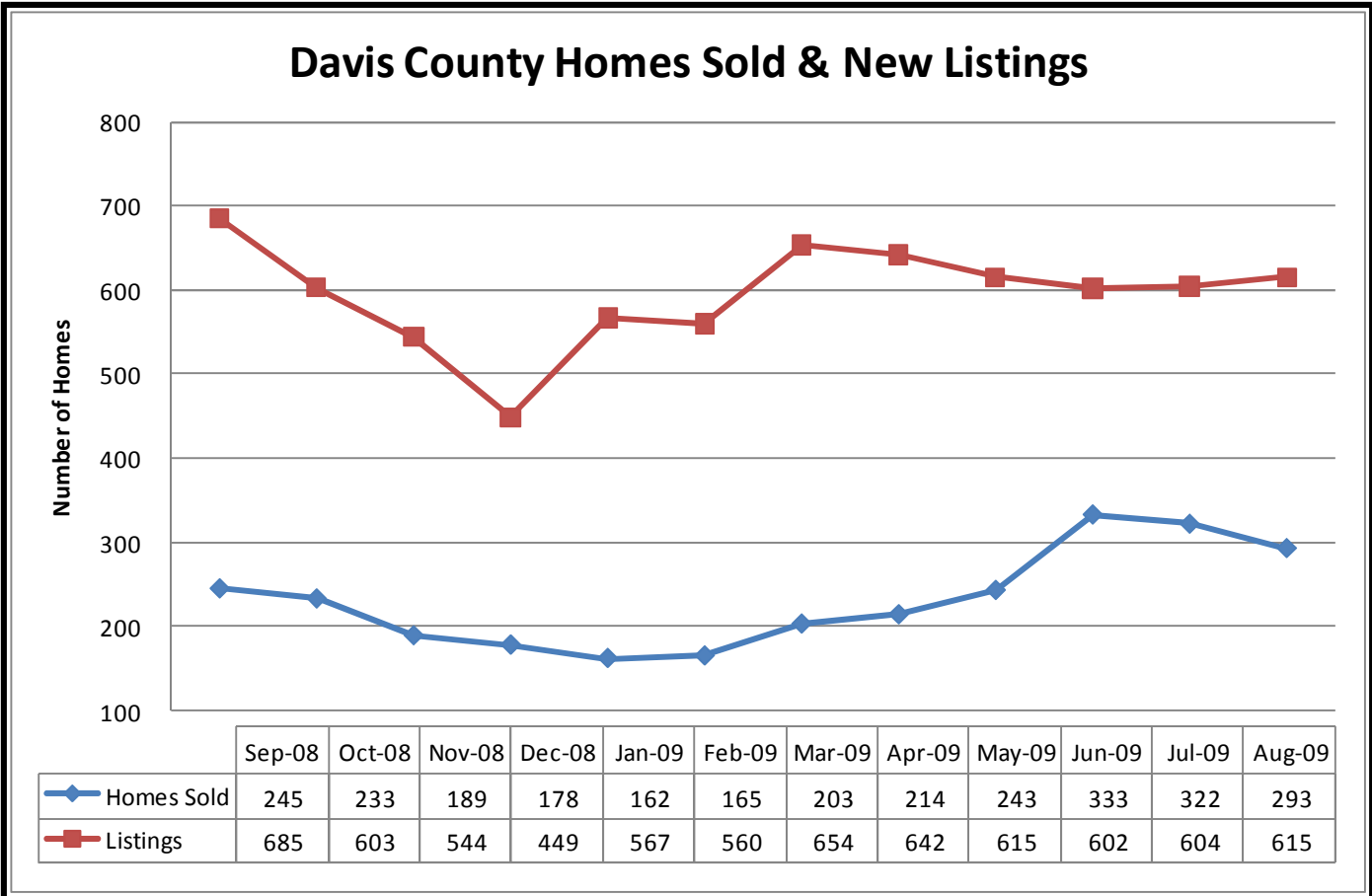
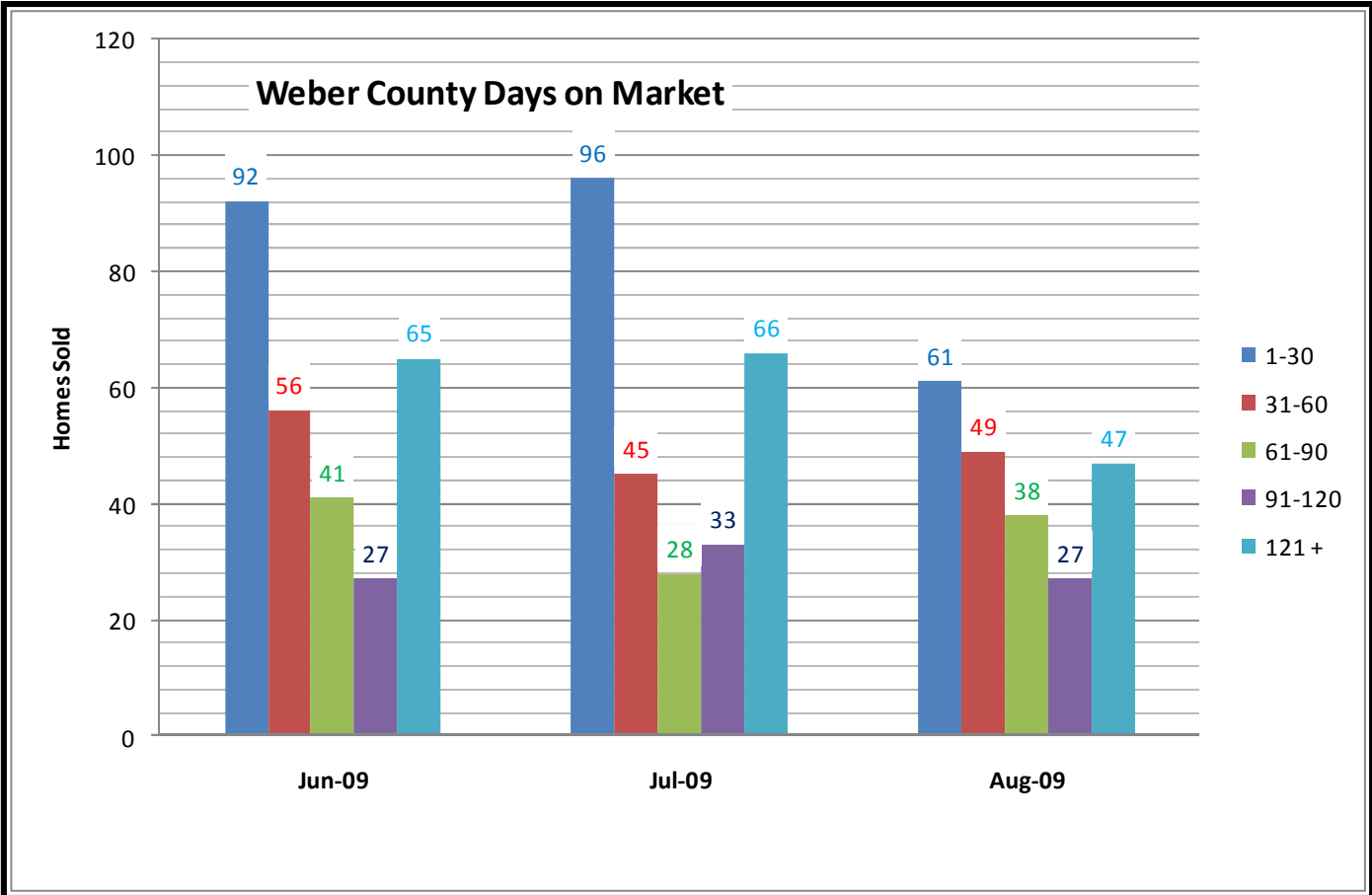
Weber County Average Sales Price



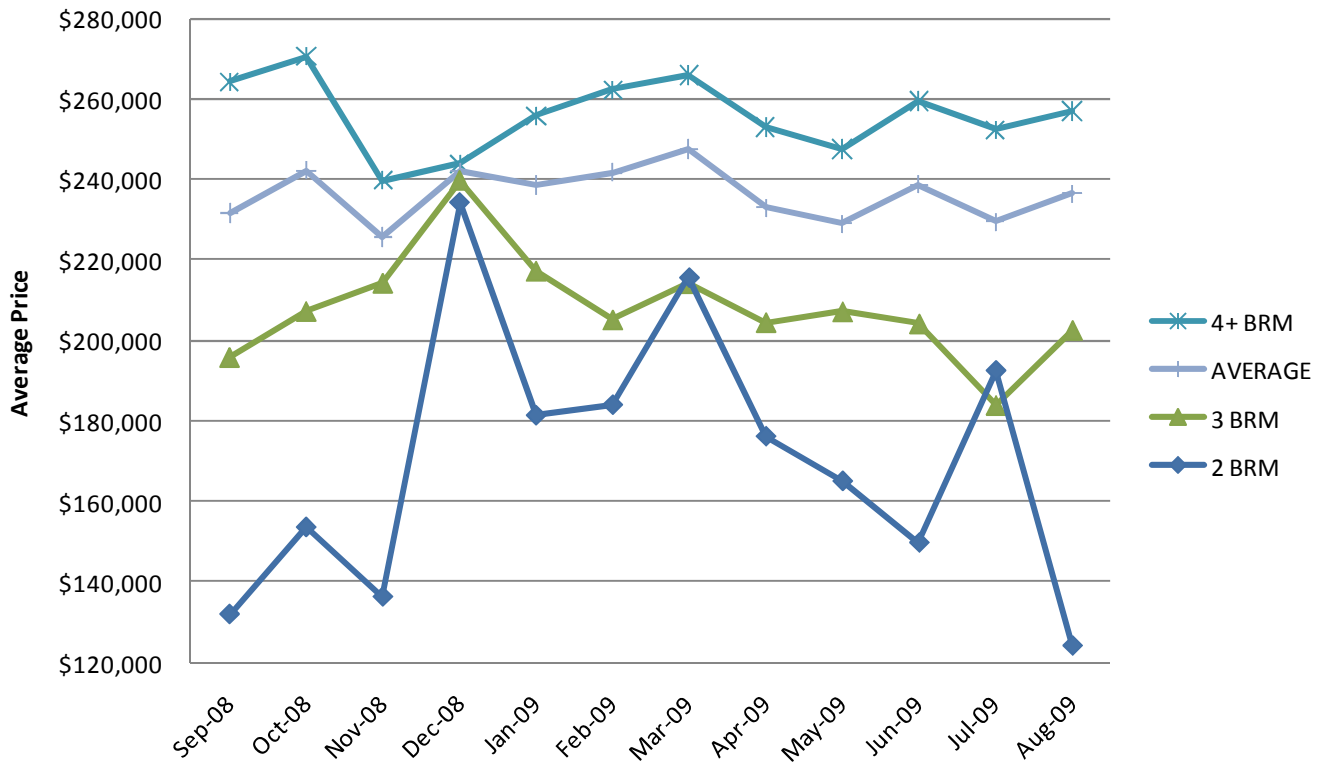
Weber County Percent Increase - Sales Price



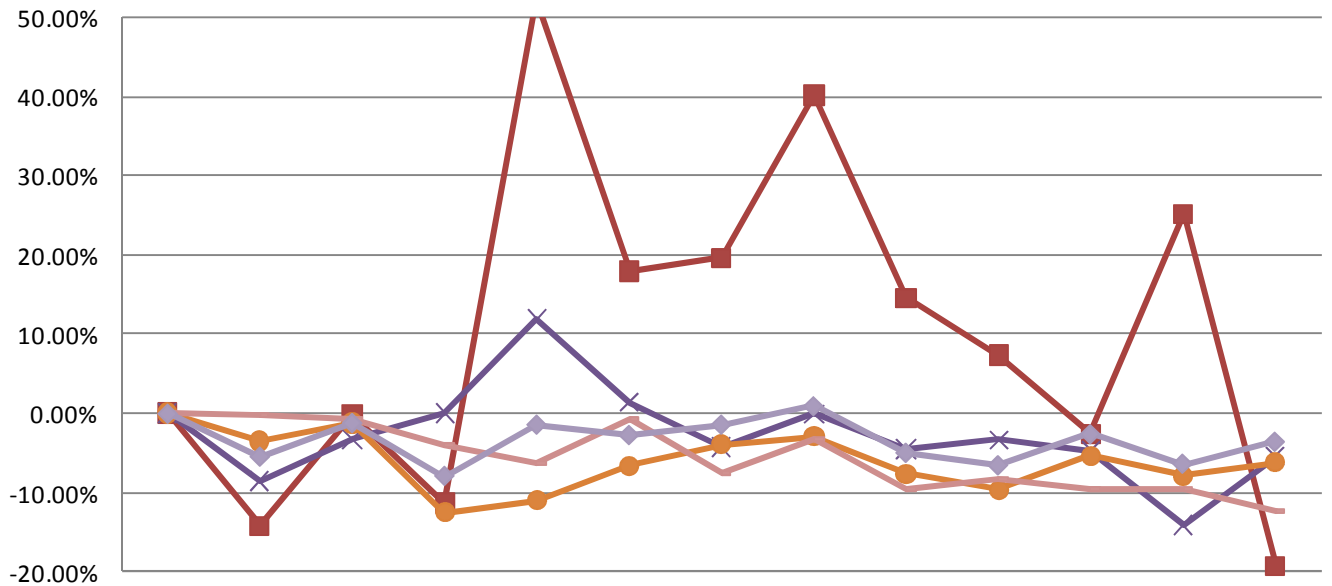
	Aug-08	Sep-08	Oct-08	Nov-08	Dec-08	Jan-09	Feb-09	Mar-09	Apr-09	May-09	Jun-09	Jul-09	Aug-09
2 BRM	0.00%	3.54%	55.75%	15.46%	-13.03%	7.67%	11.10%	-26.08%	-19.52%	6.36%	2.91%	-0.29%	-25.68%
3 BRM	0.00%	-0.69%	10.07%	-0.43%	-6.97%	7.49%	0.25%	2.69%	-5.88%	0.92%	2.17%	-2.50%	-6.19%
4+ BRM	0.00%	-3.85%	-9.45%	-8.18%	-5.02%	-11.49%	-13.35%	-10.18%	-8.81%	-13.12%	-16.62%	-7.01%	-9.05%
Listings	0.00%	0.68%	-1.07%	-5.83%	-1.29%	1.19%	5.11%	-3.75%	-6.58%	-6.30%	-0.76%	-10.31%	-12.48%
Avg	0.00%	-1.23%	2.47%	-3.12%	-7.39%	-0.75%	-7.56%	-3.14%	-6.33%	-6.12%	-6.52%	-4.05%	-8.55%



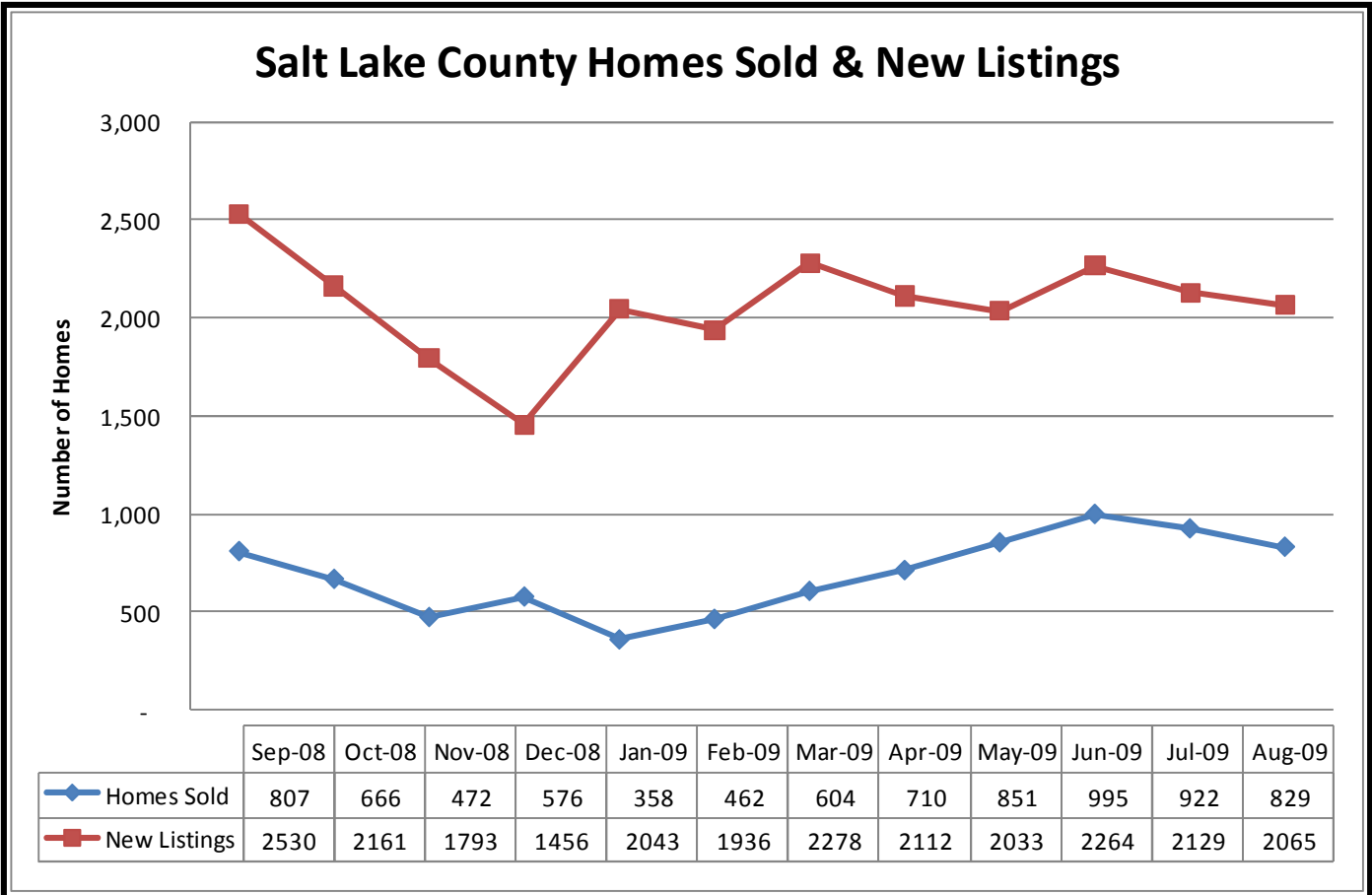
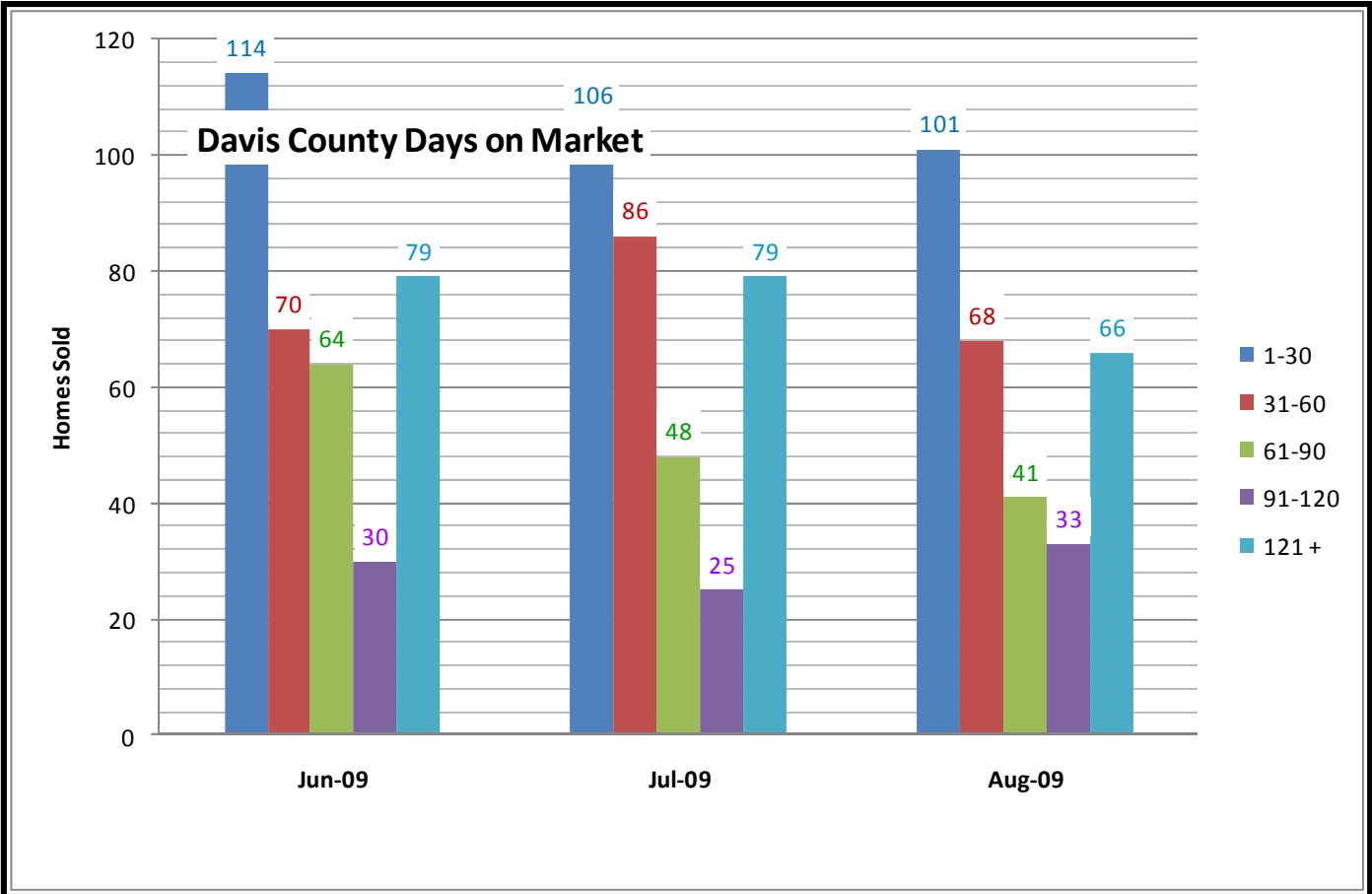
Davis County Average Sales Price



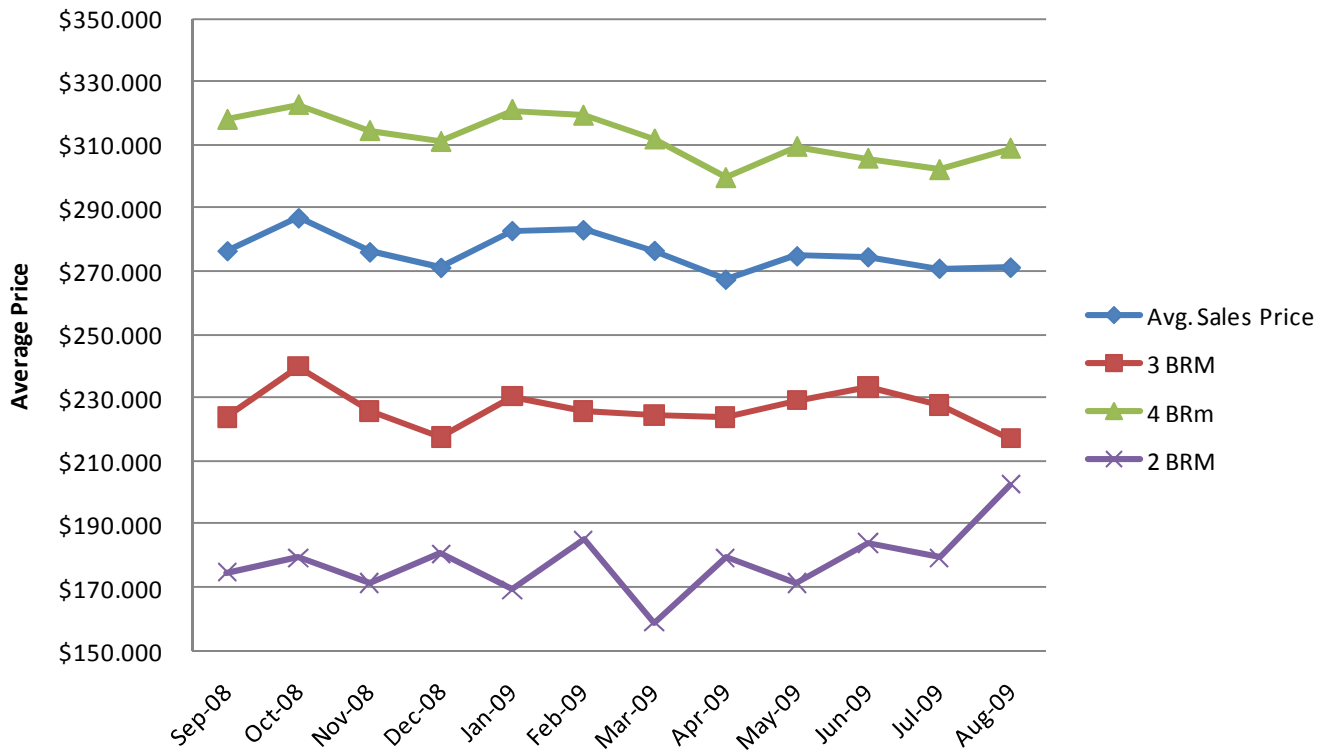
Davis County Percent Increase - Sales Price



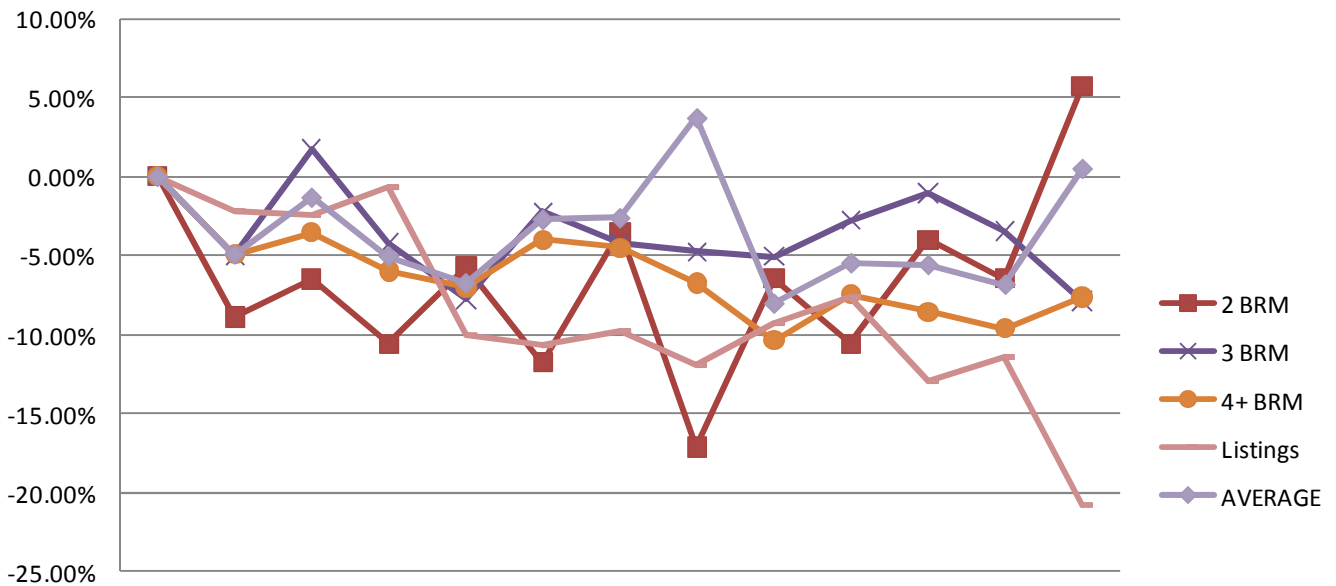
	Aug-08	Sep-08	Oct-08	Nov-08	Dec-08	Jan-09	Feb-09	Mar-09	Apr-09	May-09	Jun-09	Jul-09	Aug-09
2 BRM	0.00%	-14.21%	-0.14%	-11.38%	52.35%	17.93%	19.63%	40.18%	14.54%	7.30%	-2.64%	25.18%	-19.31%
3 BRM	0.00%	-8.58%	-3.27%	-0.01%	11.87%	1.37%	-4.25%	-0.05%	-4.55%	-3.32%	-4.71%	-14.12%	-5.46%
4+ BRM	0.00%	-3.55%	-1.29%	-12.50%	-10.99%	-6.63%	-3.93%	-2.95%	-7.69%	-9.68%	-5.35%	-7.90%	-6.23%
Listings	0.00%	-0.22%	-0.70%	-3.98%	-6.20%	-0.74%	-7.60%	-3.17%	-9.52%	-8.35%	-9.58%	-9.49%	-12.26%
Avg	0.00%	-5.52%	-1.20%	-7.99%	-1.40%	-2.74%	-1.40%	0.96%	-5.02%	-6.63%	-2.63%	-6.44%	-3.61%



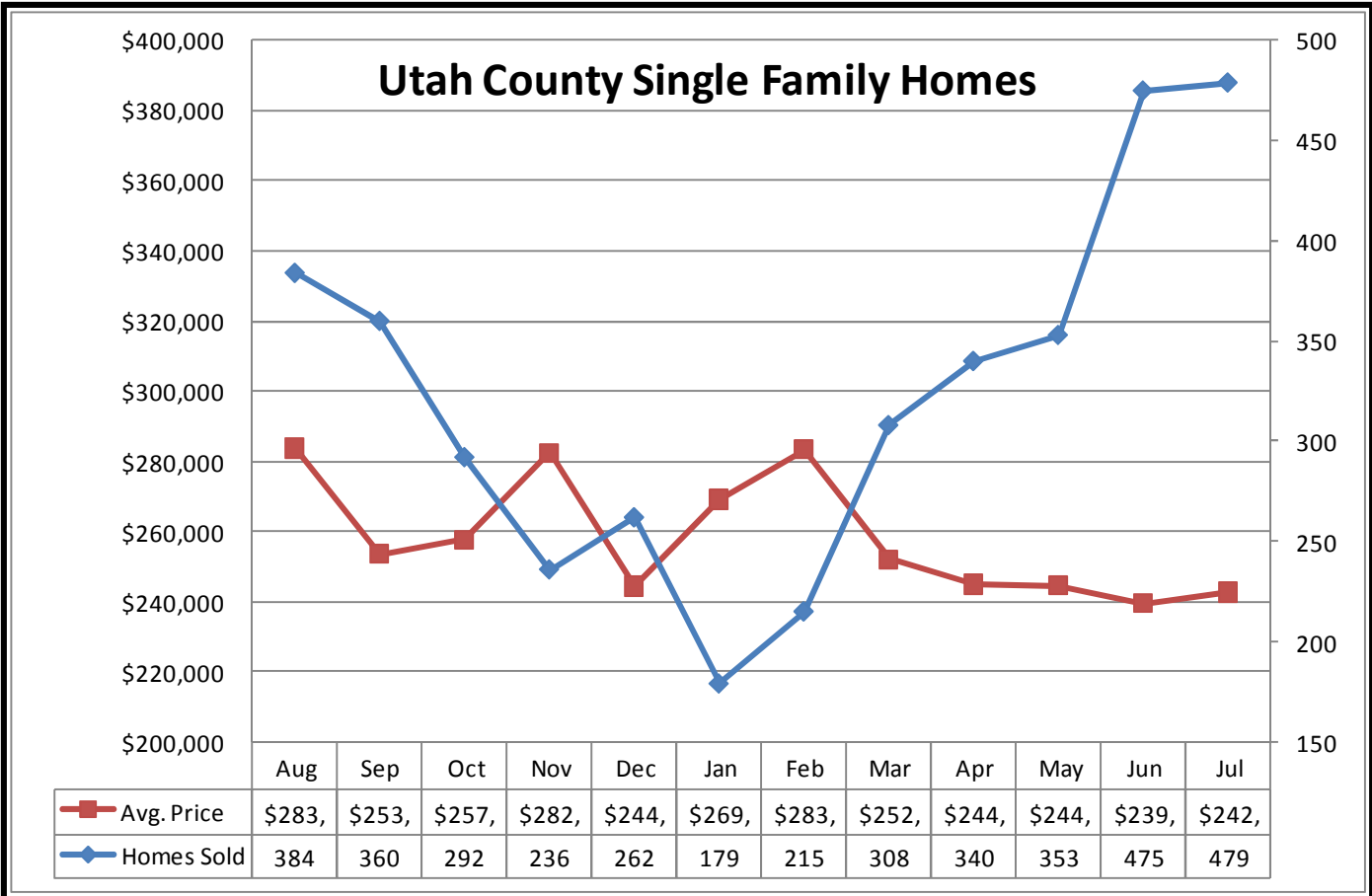
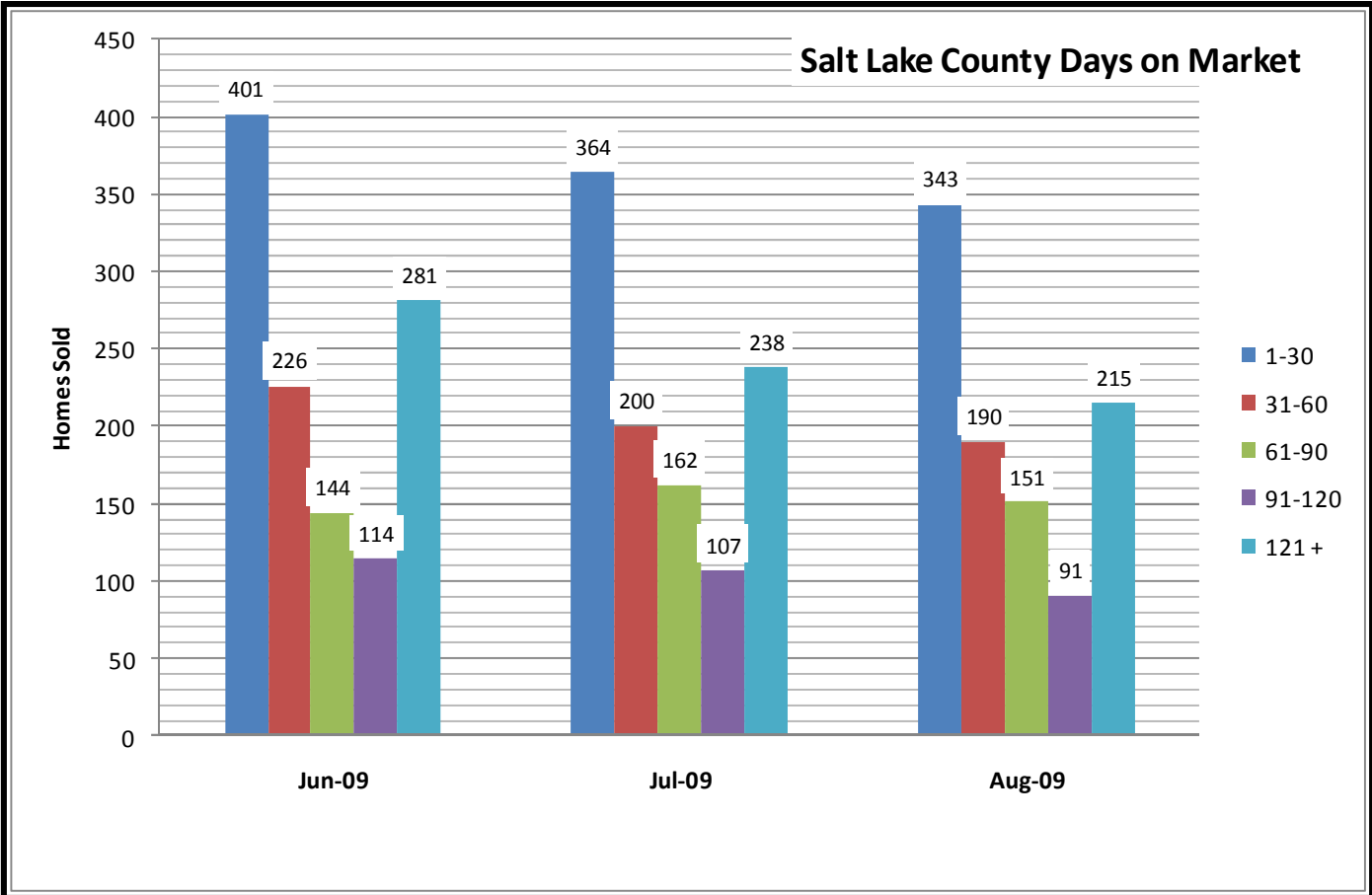
Salt Lake County Average Sales Price



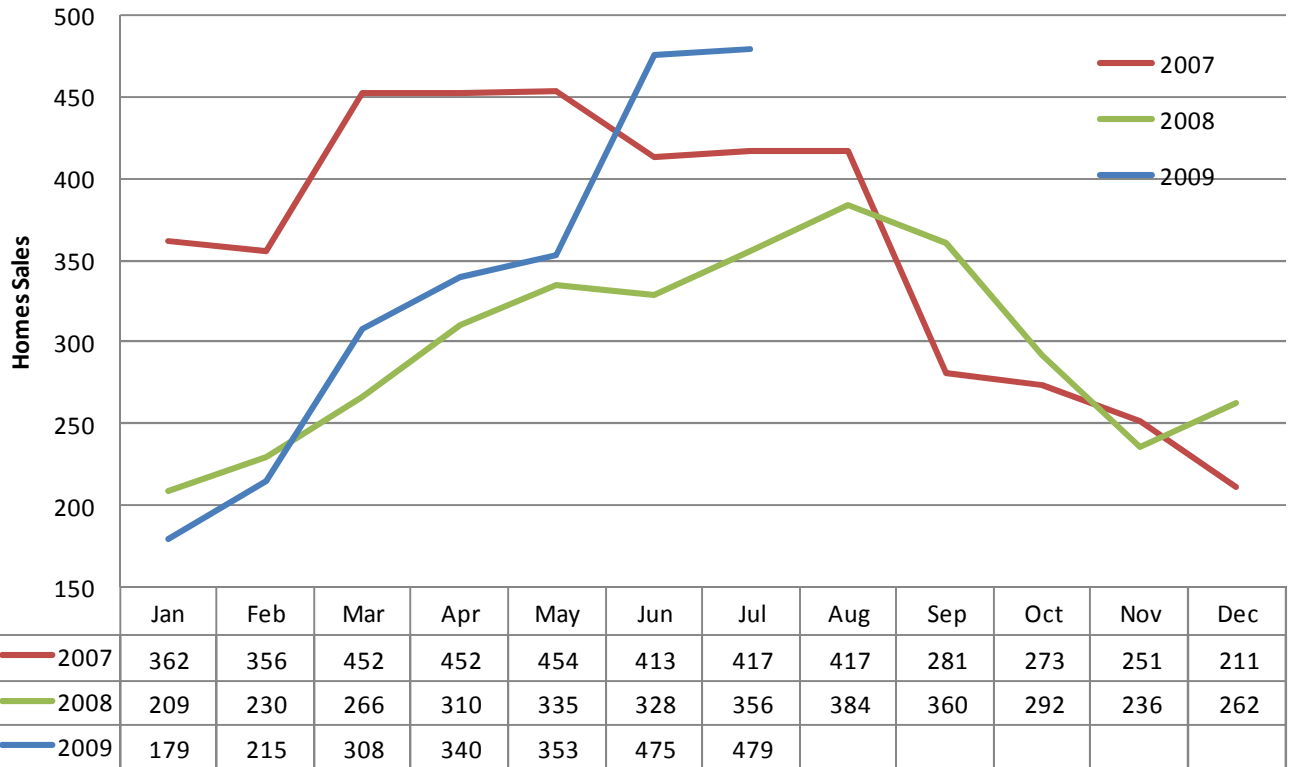
Salt Lake County Percent Increase - Sales Price



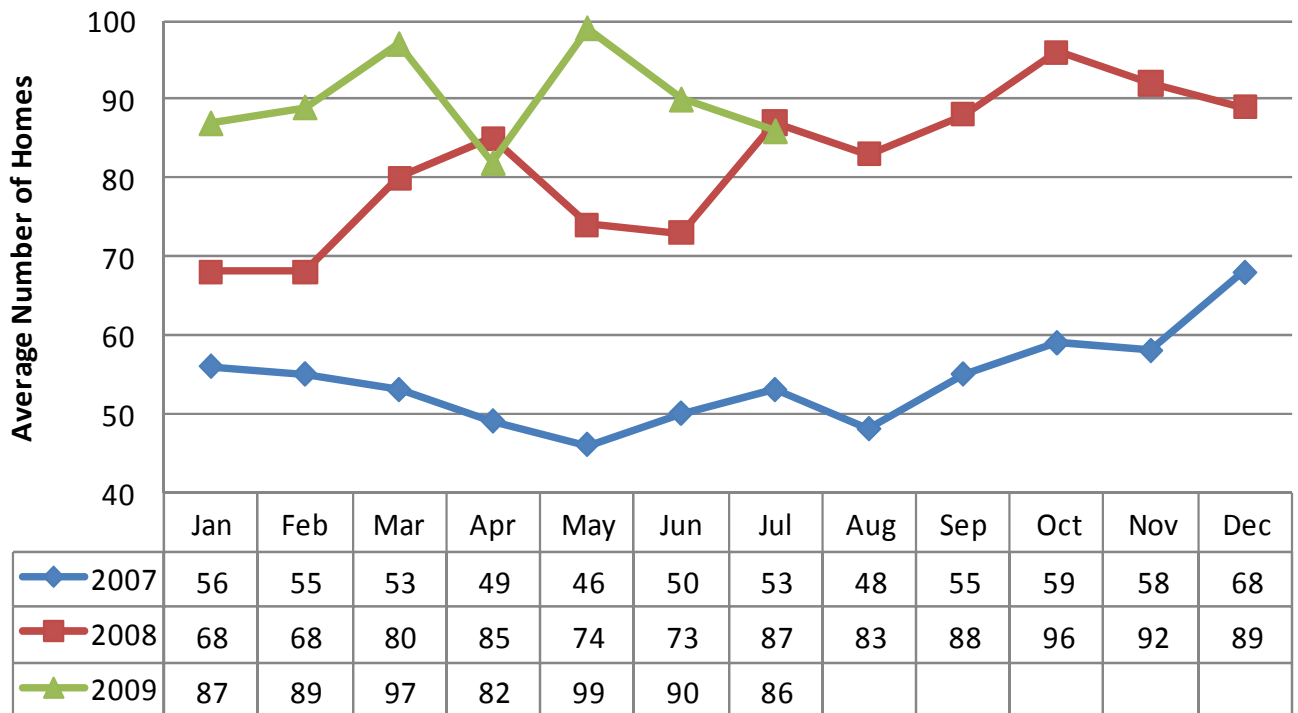
	Aug-08	Sep-08	Oct-08	Nov-08	Dec-08	Jan-09	Feb-09	Mar-09	Apr-09	May-09	Jun-09	Jul-09	Aug-09
2 BRM	0.00%	-8.89%	-6.50%	-10.58%	-5.75%	-11.77%	-3.49%	-17.11%	-6.46%	-10.61%	-4.00%	-6.44%	5.69%
3 BRM	0.00%	-5.01%	1.74%	-4.23%	-7.76%	-2.25%	-4.23%	-4.76%	-5.06%	-2.79%	-1.06%	-3.45%	-7.87%
4+ BRM	0.00%	-4.93%	-3.55%	-5.98%	-6.99%	-4.01%	-4.52%	-6.77%	-10.37%	-7.46%	-8.56%	-9.62%	-7.62%
Listings	0.00%	-2.21%	-2.50%	-0.67%	-10.00%	-10.65%	-9.77%	-11.91%	-9.31%	-7.62%	-12.91%	-11.42%	-20.80%
AVERAGE	0.00%	-4.93%	-1.32%	-5.05%	-6.76%	-2.72%	-2.63%	3.73%	-8.07%	-5.48%	-5.60%	-6.85%	0.51%



Utah County Single Family Home Sales



Utah County Days on the Market



You are receiving this e-mail Market Data Report from Inwest Title Services, Inc. as a means to keep you posted on local, state, and national market trends.

It is our pleasure to compile and supply you with this information on a regular basis. If you wish to discontinue receiving this report, please respond with “Unsubscribe” in the Subject Line.

