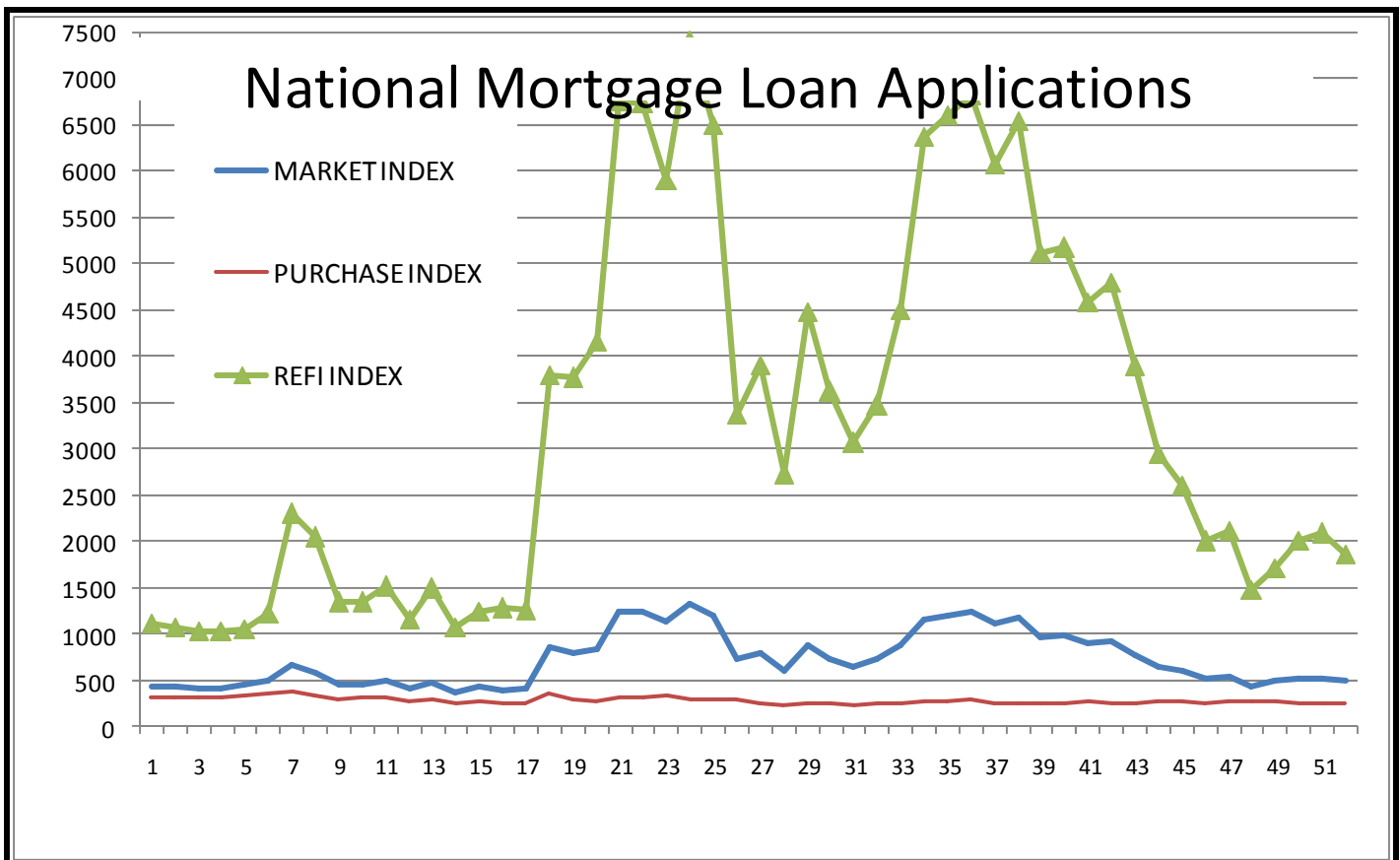
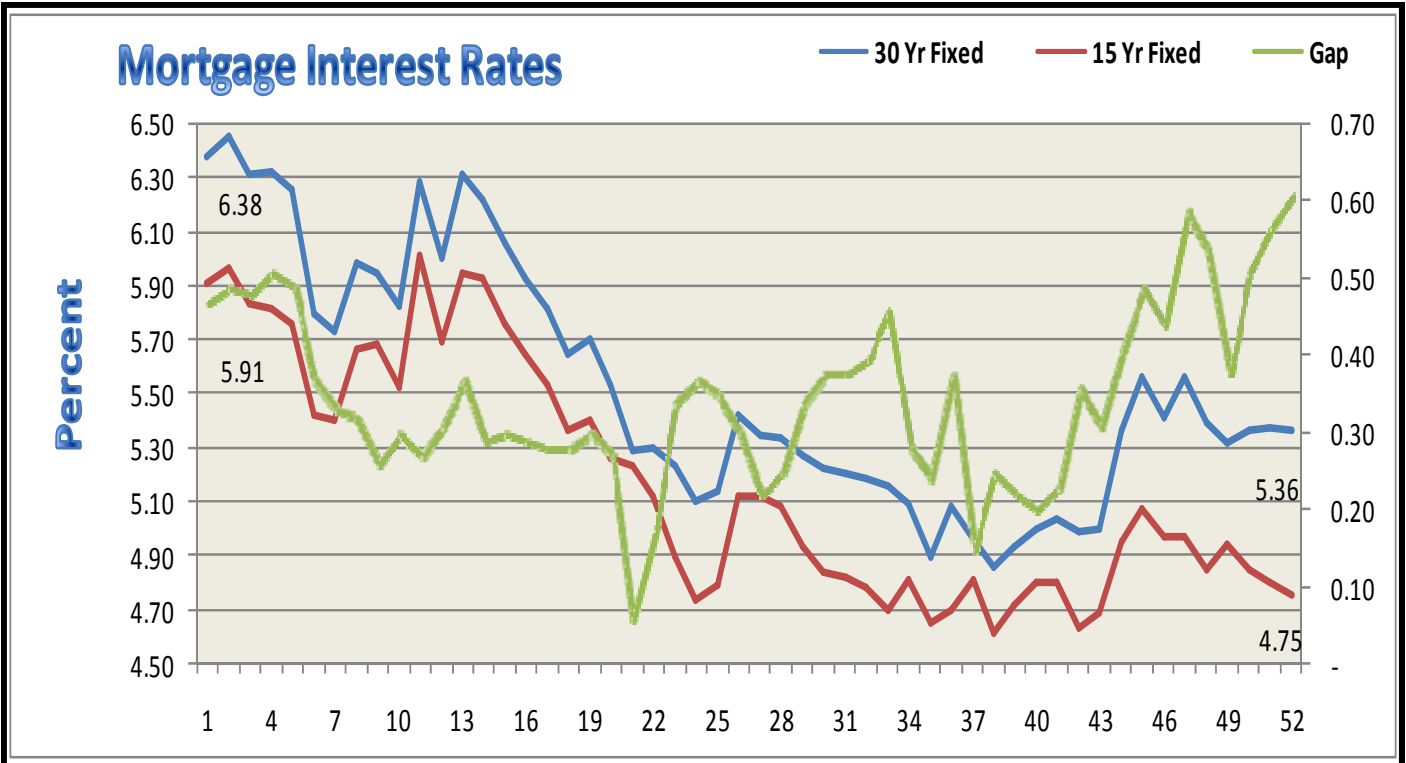


INWEST TITLE SERVICES

South Ogden	801 475-4410	Layton	801 773-9806
Salt Lake	801 264-0700	Sandy	801 208-2000
Tooele	435 882-5510	Grantsville	435 884-3221
Orem State St.	801 932-1013	Orem Center St.	801 221-9277
Spanish Fork	801 794-2115	Park City	435 649-6655
Cedar City	435 586-5601	St. George	435 634-5080
West Haven (Corporate offices) 2037 West Commerce Way, Ogden, UT 84401 - 801 399-3544			

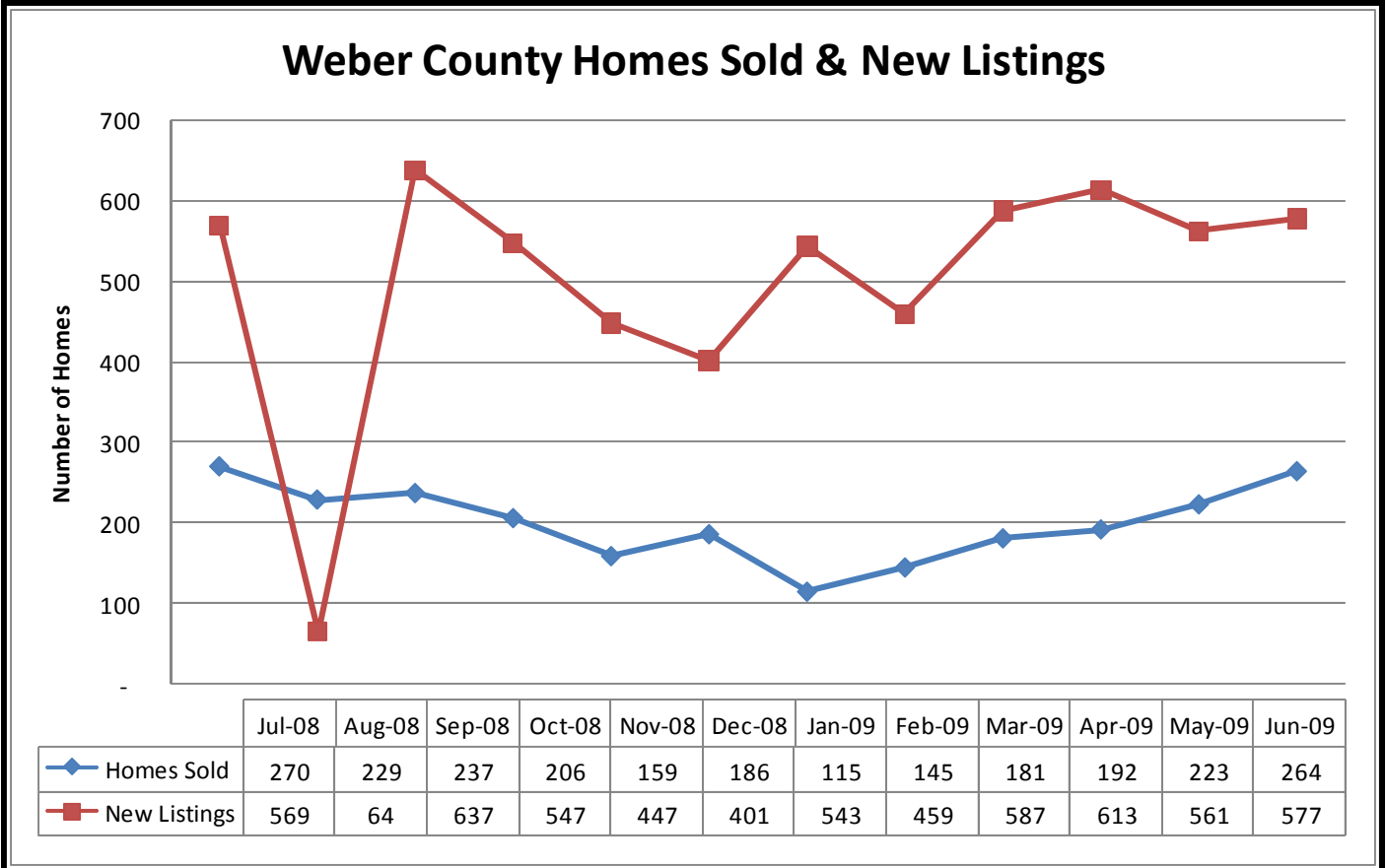


Seasonally adjusted indices from the Mortgage Bankers Association of America (MBA) shows the major loan application indices for the past 52 weeks. For the week ending July 24, 2009 the indices decreased an average of -5.8%. The Refi Index decreased -10.9%, the Market Index decreased -6.3%, and the Purchase Index remained the same. For more information go to www.mortgagebankers.org.

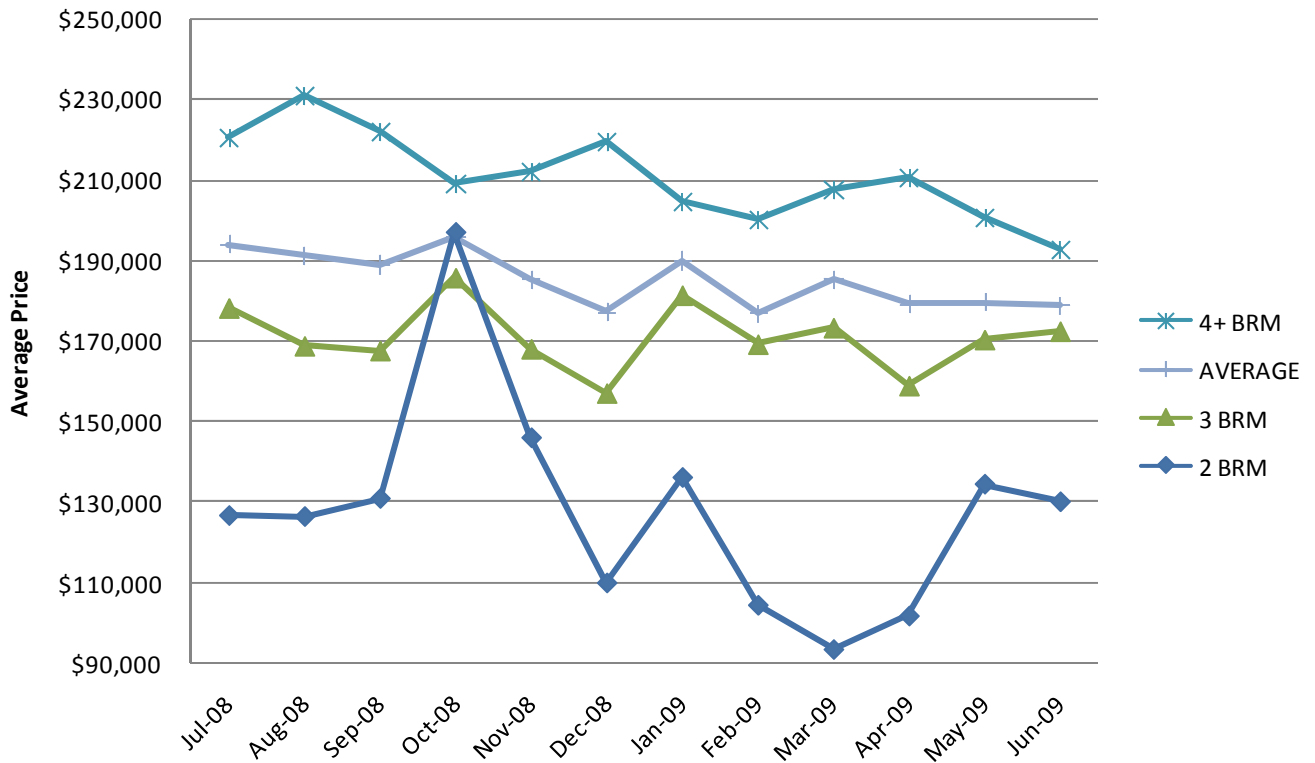


The Bankrate.com average mortgage interest rates are 5.36% and 4.75% for 30 year and 15 year mortgages, respectively.

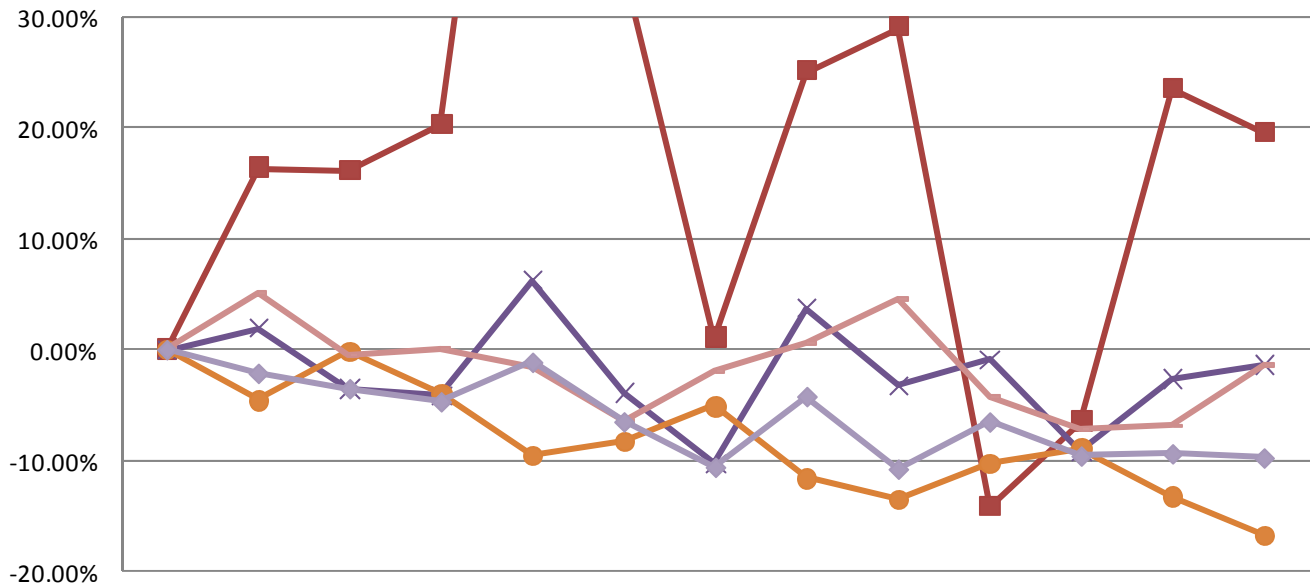
Freddie Mac reports mortgage rates from its weekly survey at 5.2% for a 30 year mortgage, 4.68% for the 15 year mortgage, and 4.77% for the 1 year ARM.



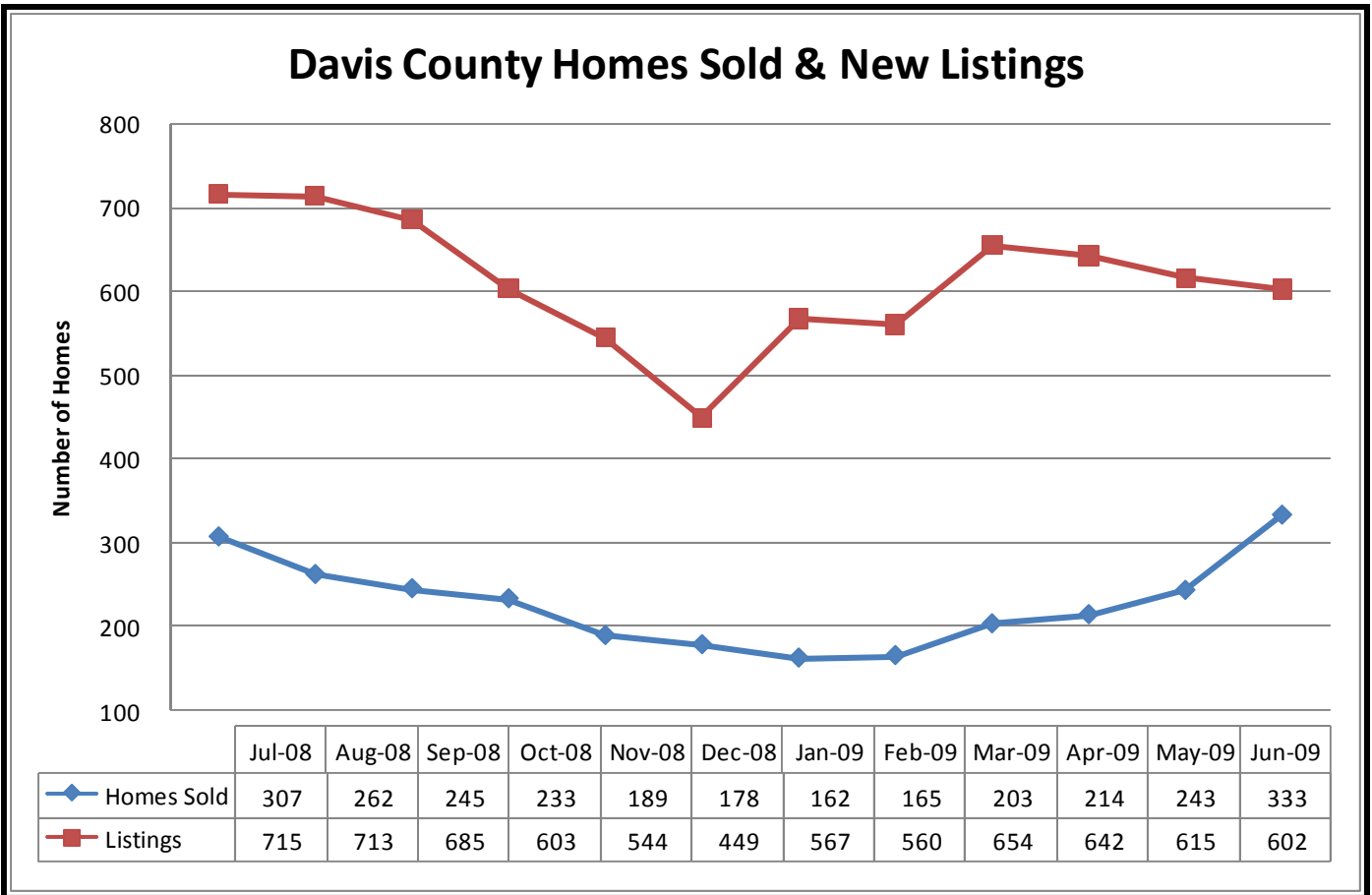
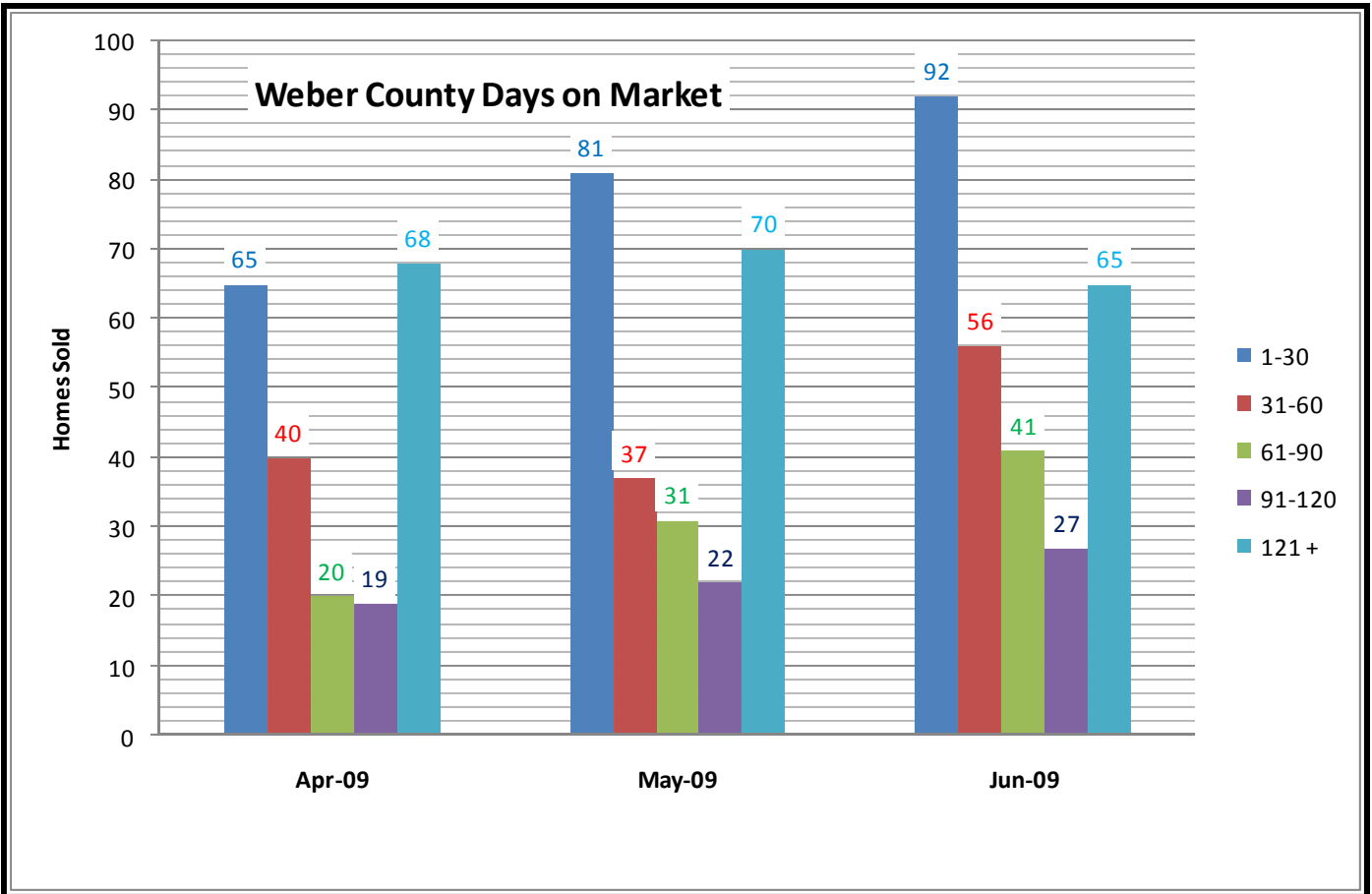
Weber County Average Sales Price



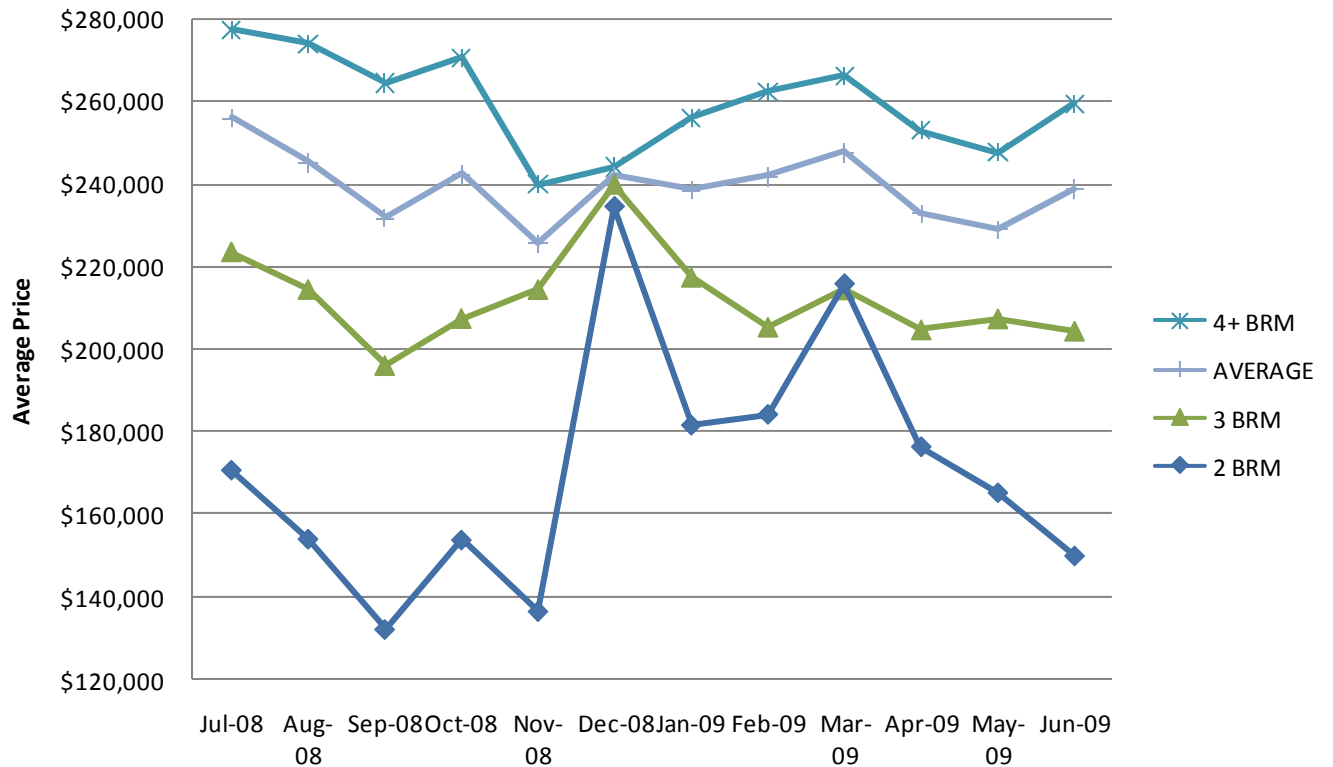
Weber County Percent Increase - Sales Price



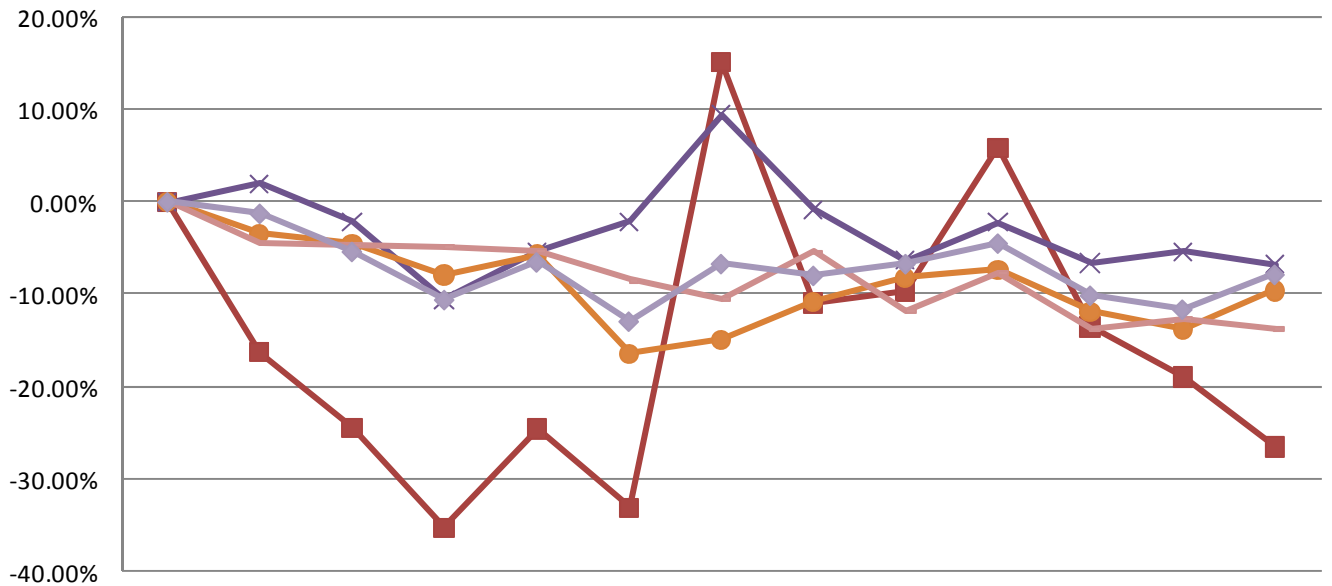
	Jun-08	Jul-08	Aug-08	Sep-08	Oct-08	Nov-08	Dec-08	Jan-09	Feb-09	Mar-09	Apr-09	May-09	Jun-09
2 BRM	0.00%	16.45%	16.21%	20.33%	81.00%	34.17%	1.07%	25.12%	29.11%	-14.11%	-6.47%	23.59%	19.58%
3 BRM	0.00%	1.95%	-3.45%	-4.12%	6.27%	-3.87%	-10.19%	3.77%	-3.21%	-0.86%	-9.13%	-2.56%	-1.36%
4+ BRM	0.00%	-4.58%	-0.11%	-3.95%	-9.55%	-8.28%	-5.12%	-11.58%	-13.44%	-10.28%	-8.91%	-13.22%	-16.71%
Listings	0.00%	5.05%	-0.56%	0.11%	-1.63%	-6.36%	-1.85%	0.62%	4.51%	-4.29%	-7.10%	-6.83%	-1.32%
Avg	0.00%	-2.14%	-3.53%	-4.71%	-1.15%	-6.53%	-10.65%	-4.25%	-10.82%	-6.55%	-9.63%	-9.43%	-9.81%



Davis County Average Sales Price

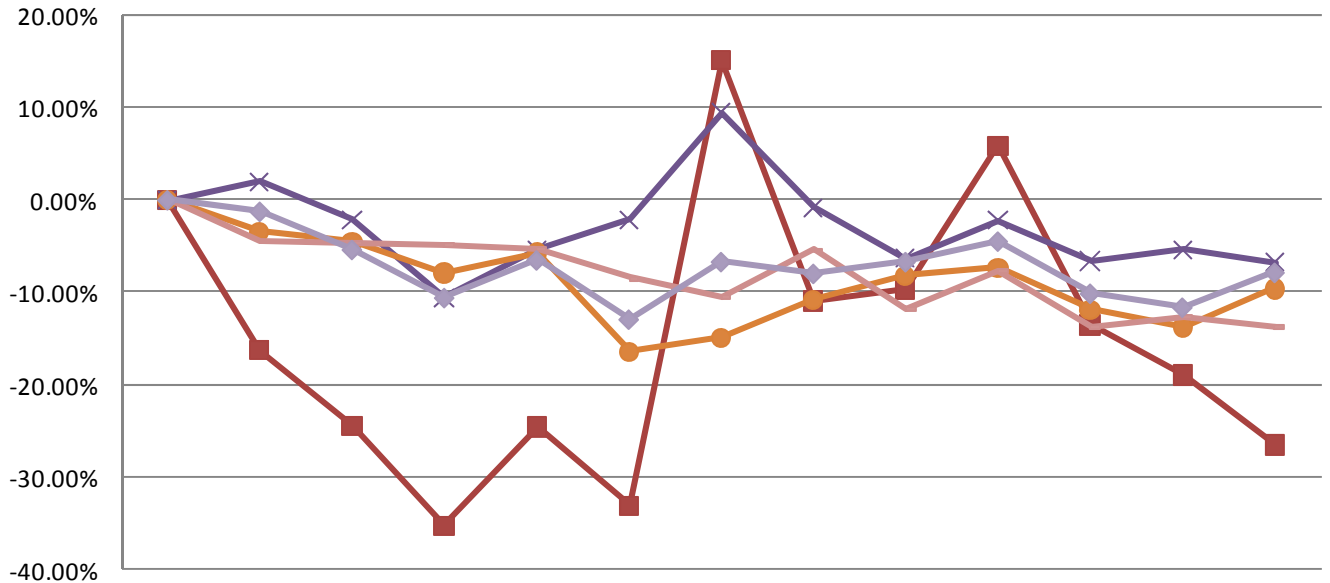


Davis County Percent Increase - Sales Price



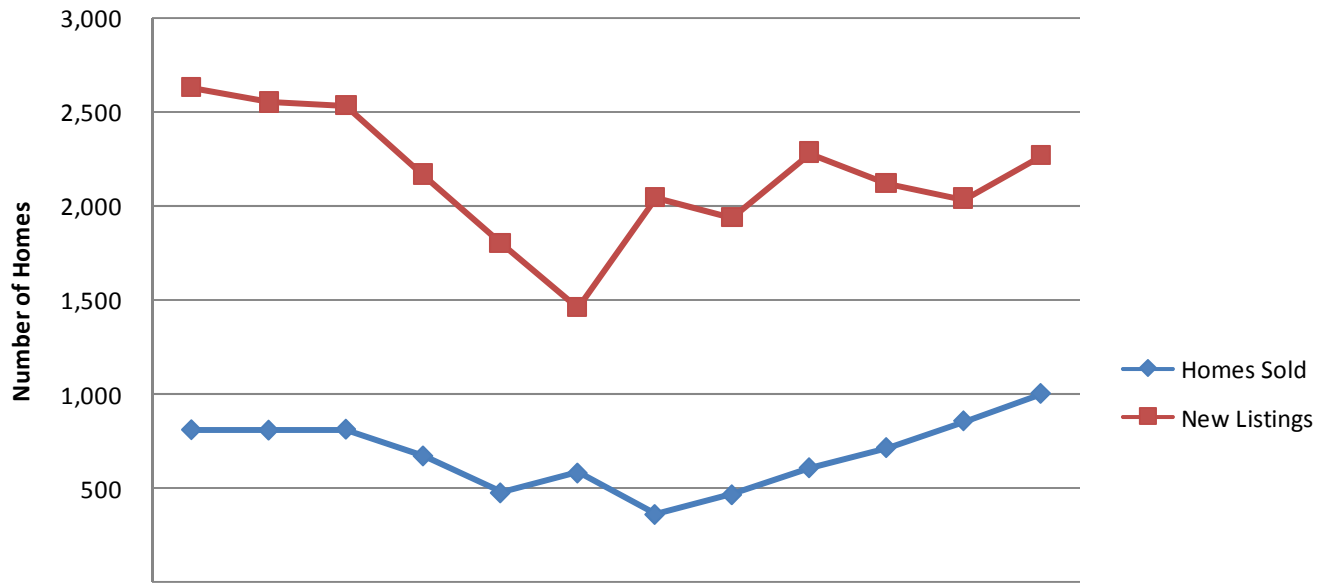
	Jun-08	Jul-08	Aug-08	Sep-08	Oct-08	Nov-08	Dec-08	Jan-09	Feb-09	Mar-09	Apr-09	May-09	Jun-09
2 BRM	0.00%	-16.26%	-24.46%	-35.20%	-24.57%	-33.06%	15.08%	-10.91%	-9.63%	5.89%	-13.48%	-18.95%	-26.45%
3 BRM	0.00%	2.04%	-2.11%	-10.51%	-5.32%	-2.12%	9.50%	-0.77%	-6.28%	-2.17%	-6.57%	-5.36%	-6.73%
4+ BRM	0.00%	-3.41%	-4.52%	-7.91%	-5.75%	-16.46%	-15.02%	-10.85%	-8.27%	-7.33%	-11.86%	-13.76%	-9.63%
Listings	0.00%	-4.50%	-4.66%	-4.87%	-5.33%	-8.45%	-10.57%	-5.36%	-11.90%	-7.68%	-13.74%	-12.62%	-13.79%
Avg	0.00%	-1.25%	-5.39%	-10.61%	-6.53%	-12.95%	-6.71%	-7.99%	-6.72%	-4.49%	-10.14%	-11.66%	-7.88%

Davis County Percent Increase - Sales Price



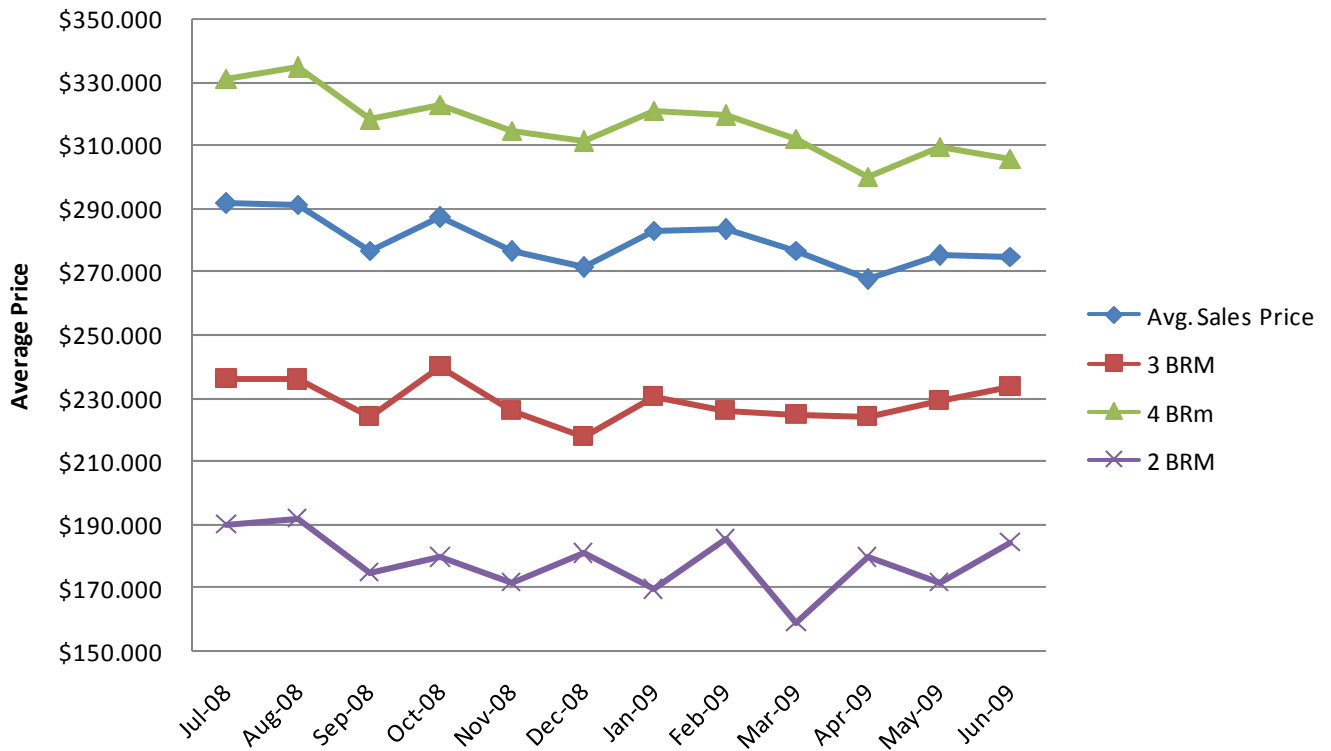
	Jun-08	Jul-08	Aug-08	Sep-08	Oct-08	Nov-08	Dec-08	Jan-09	Feb-09	Mar-09	Apr-09	May-09	Jun-09
2 BRM	0.00%	-16.26%	-24.46%	-35.20%	-24.57%	-33.06%	15.08%	-10.91%	-9.63%	5.89%	-13.48%	-18.95%	-26.45%
3 BRM	0.00%	2.04%	-2.11%	-10.51%	-5.32%	-2.12%	9.50%	-0.77%	-6.28%	-2.17%	-6.57%	-5.36%	-6.73%
4+ BRM	0.00%	-3.41%	-4.52%	-7.91%	-5.75%	-16.46%	-15.02%	-10.85%	-8.27%	-7.33%	-11.86%	-13.76%	-9.63%
Listings	0.00%	-4.50%	-4.66%	-4.87%	-5.33%	-8.45%	-10.57%	-5.36%	-11.90%	-7.68%	-13.74%	-12.62%	-13.79%
Avg	0.00%	-1.25%	-5.39%	-10.61%	-6.53%	-12.95%	-6.71%	-7.99%	-6.72%	-4.49%	-10.14%	-11.66%	-7.88%

Salt Lake County Homes Sold & New Listings

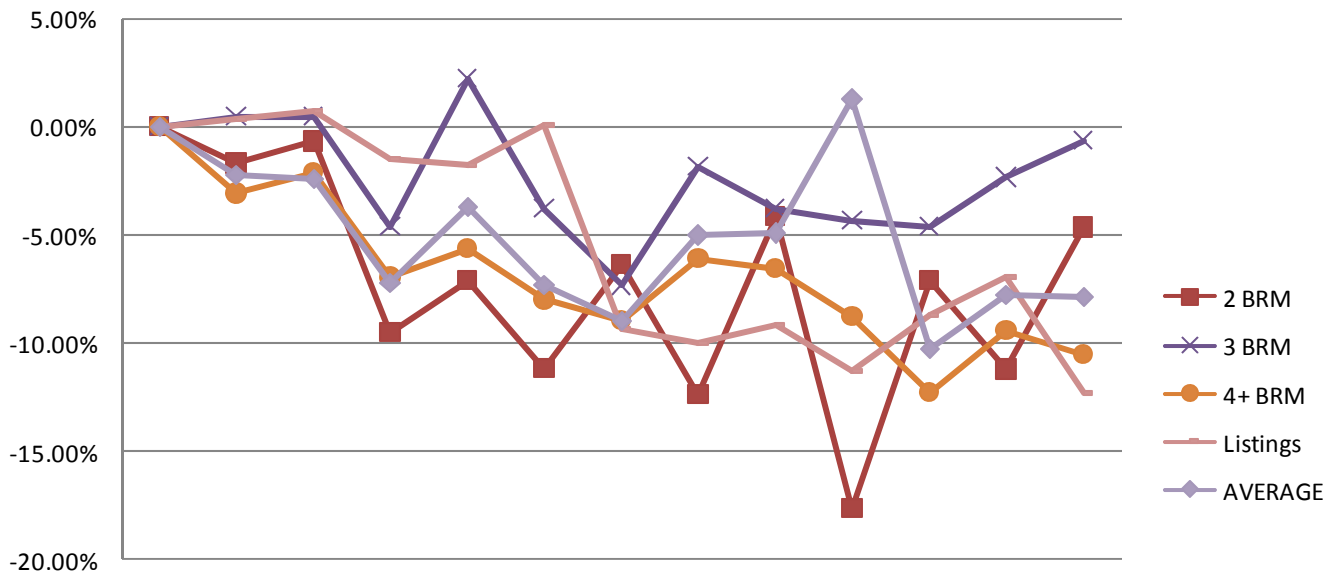


	Jul-08	Aug-08	Sep-08	Oct-08	Nov-08	Dec-08	Jan-09	Feb-09	Mar-09	Apr-09	May-09	Jun-09
Homes Sold	804	802	807	666	472	576	358	462	604	710	851	995
New Listings	2624	2547	2530	2161	1793	1456	2043	1936	2278	2112	2033	2264

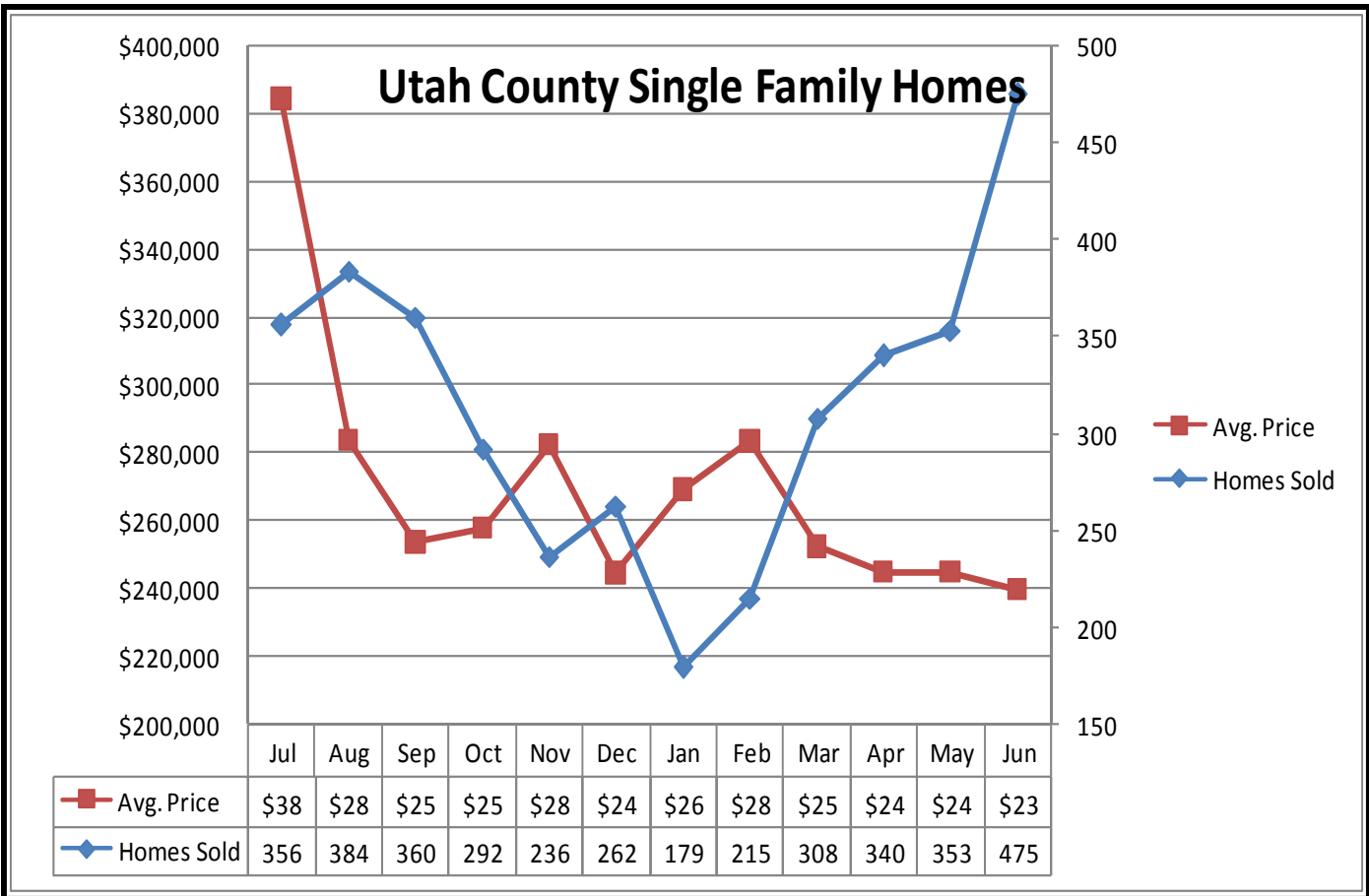
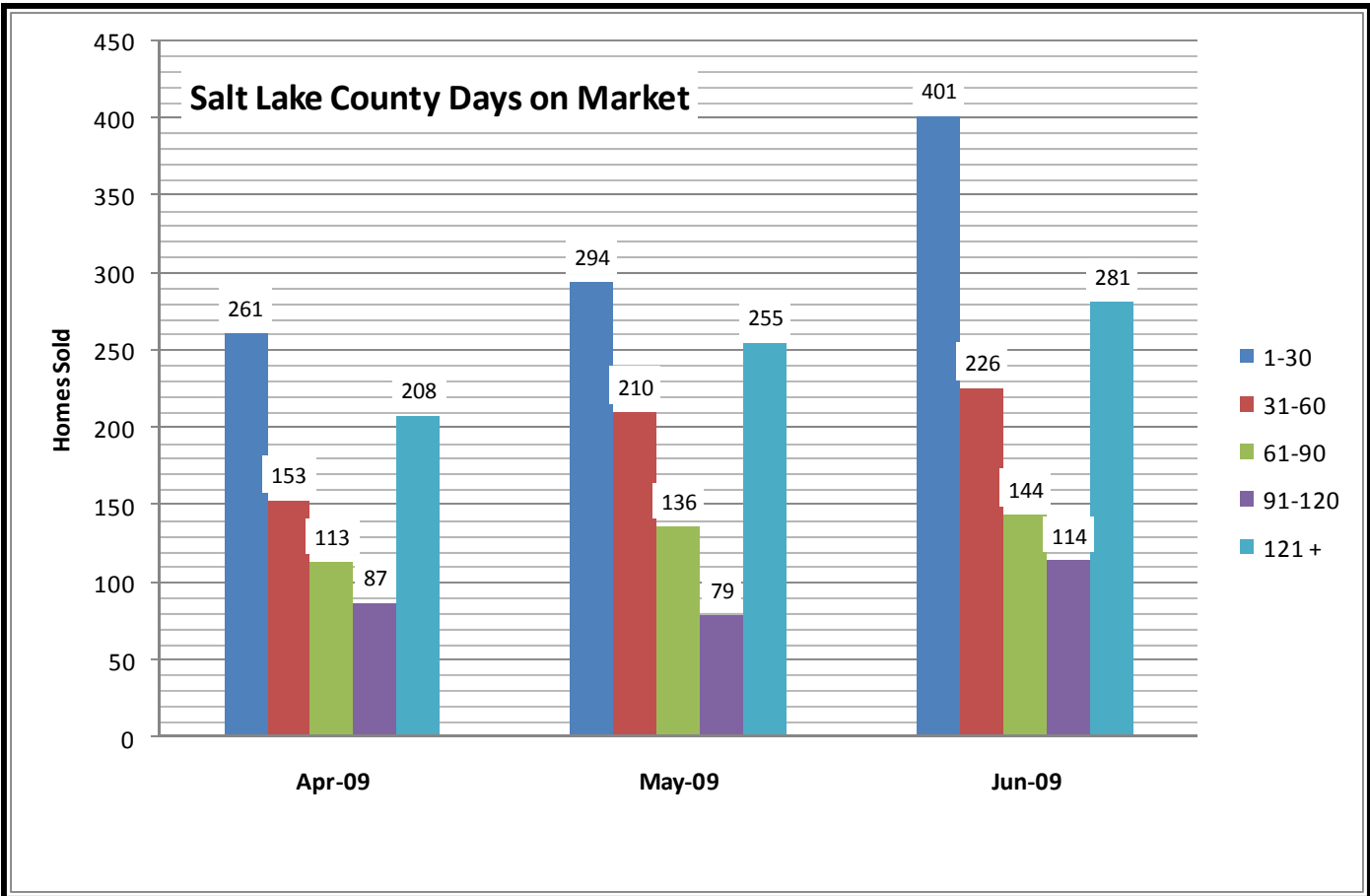
Salt Lake County Average Sales Price



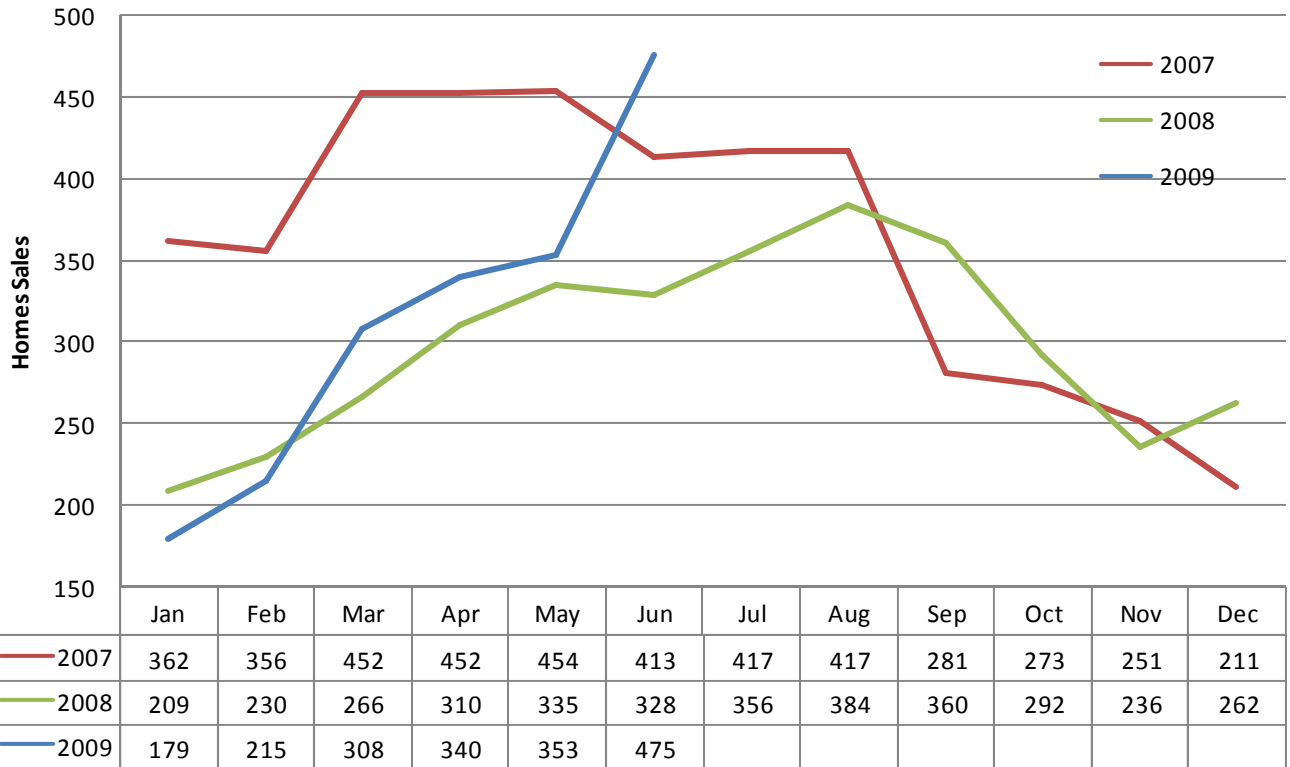
Salt Lake County Percent Increase - Sales Price



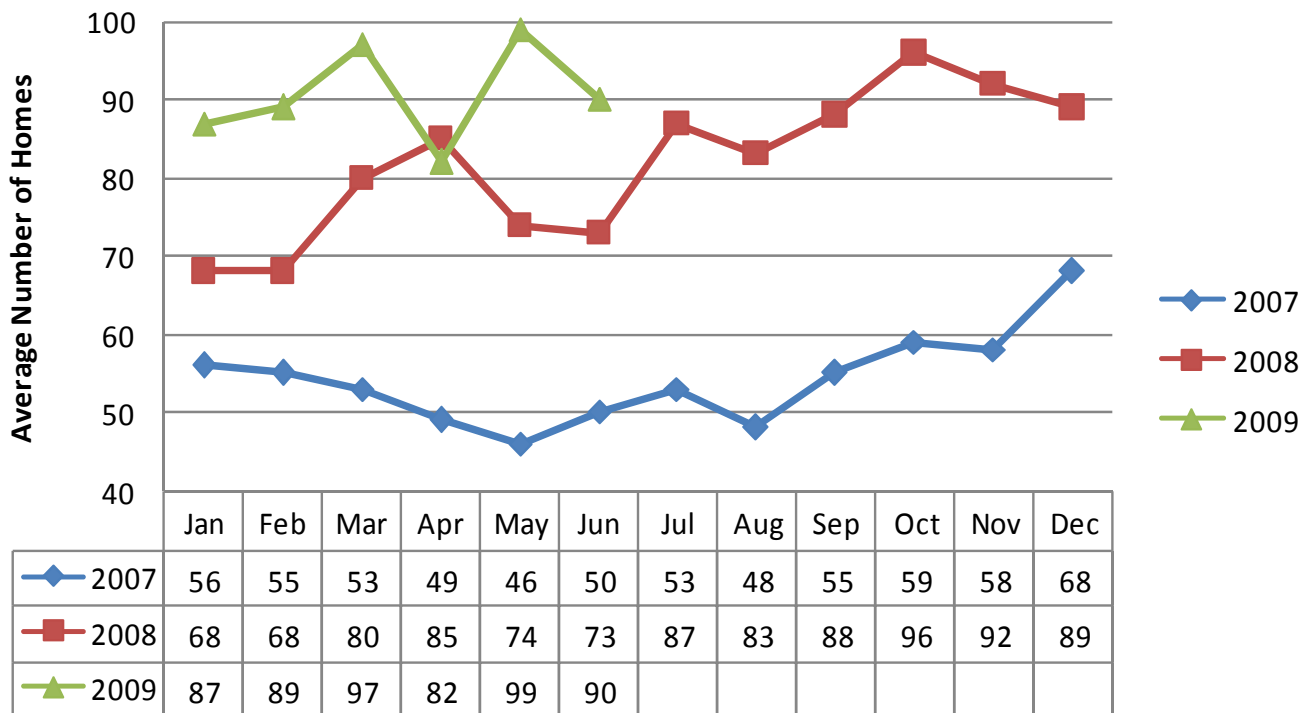
	Jun-08	Jul-08	Aug-08	Sep-08	Oct-08	Nov-08	Dec-08	Jan-09	Feb-09	Mar-09	Apr-09	May-09	Jun-09
2 BRM	0.00%	-1.73%	-0.69%	-9.52%	-7.15%	-11.20%	-6.41%	-12.38%	-4.15%	-17.68%	-7.11%	-11.23%	-4.66%
3 BRM	0.00%	0.48%	0.43%	-4.60%	2.18%	-3.81%	-7.36%	-1.83%	-3.82%	-4.35%	-4.65%	-2.37%	-0.64%
4+ BRM	0.00%	-3.10%	-2.16%	-6.98%	-5.63%	-8.00%	-9.00%	-6.08%	-6.58%	-8.78%	-12.30%	-9.46%	-10.54%
Listings	0.00%	0.32%	0.70%	-1.52%	-1.81%	0.02%	-9.37%	-10.03%	-9.14%	-11.29%	-8.68%	-6.97%	-12.30%
AVERAGE	0.00%	-2.23%	-2.40%	-7.21%	-3.69%	-7.33%	-9.00%	-5.05%	-4.96%	1.24%	-10.27%	-7.75%	-7.86%



Utah County Single Family Home Sales



Utah County Days on the Market



You are receiving this e-mail Market Data Report from Inwest Title Services, Inc. as a means to keep you posted on local, state, and national market trends.

It is our pleasure to compile and supply you with this information on a regular basis. If you wish to discontinue receiving this report, please respond with “Unsubscribe” in the Subject Line.

