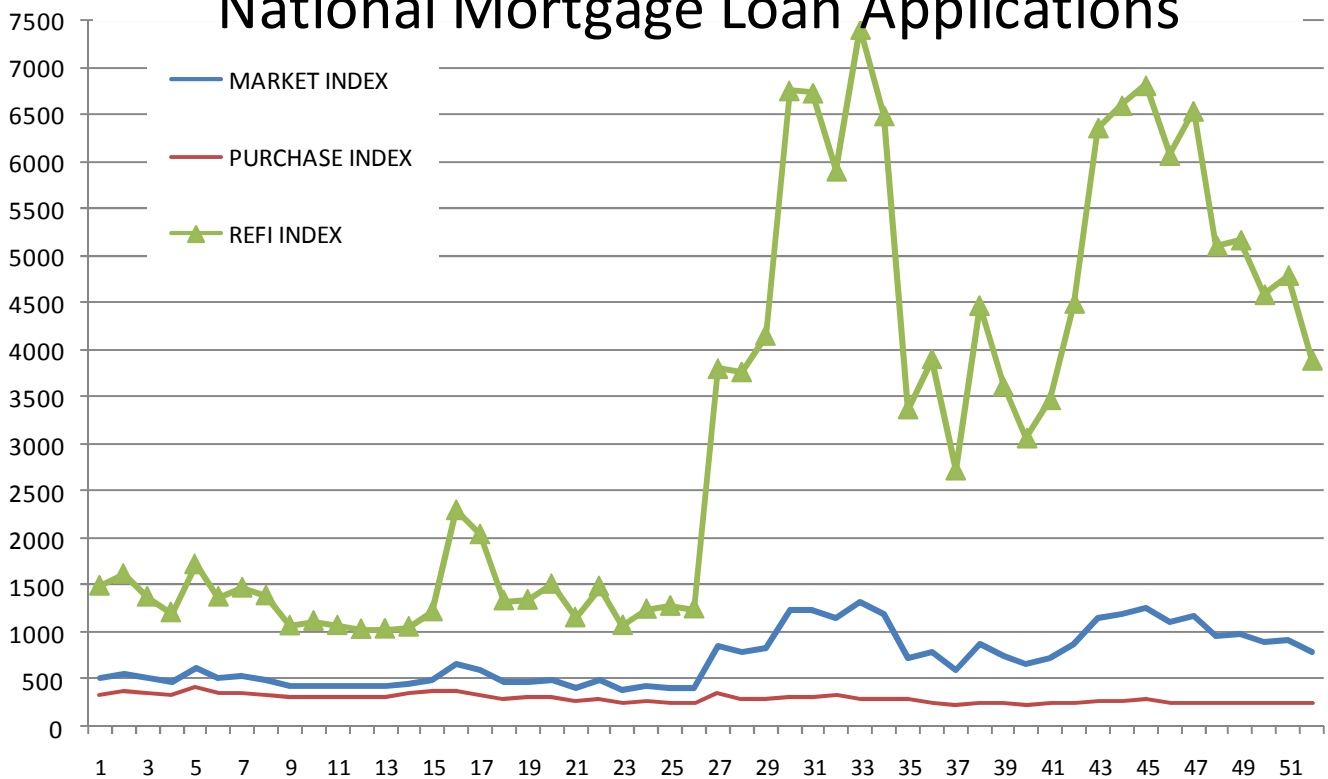


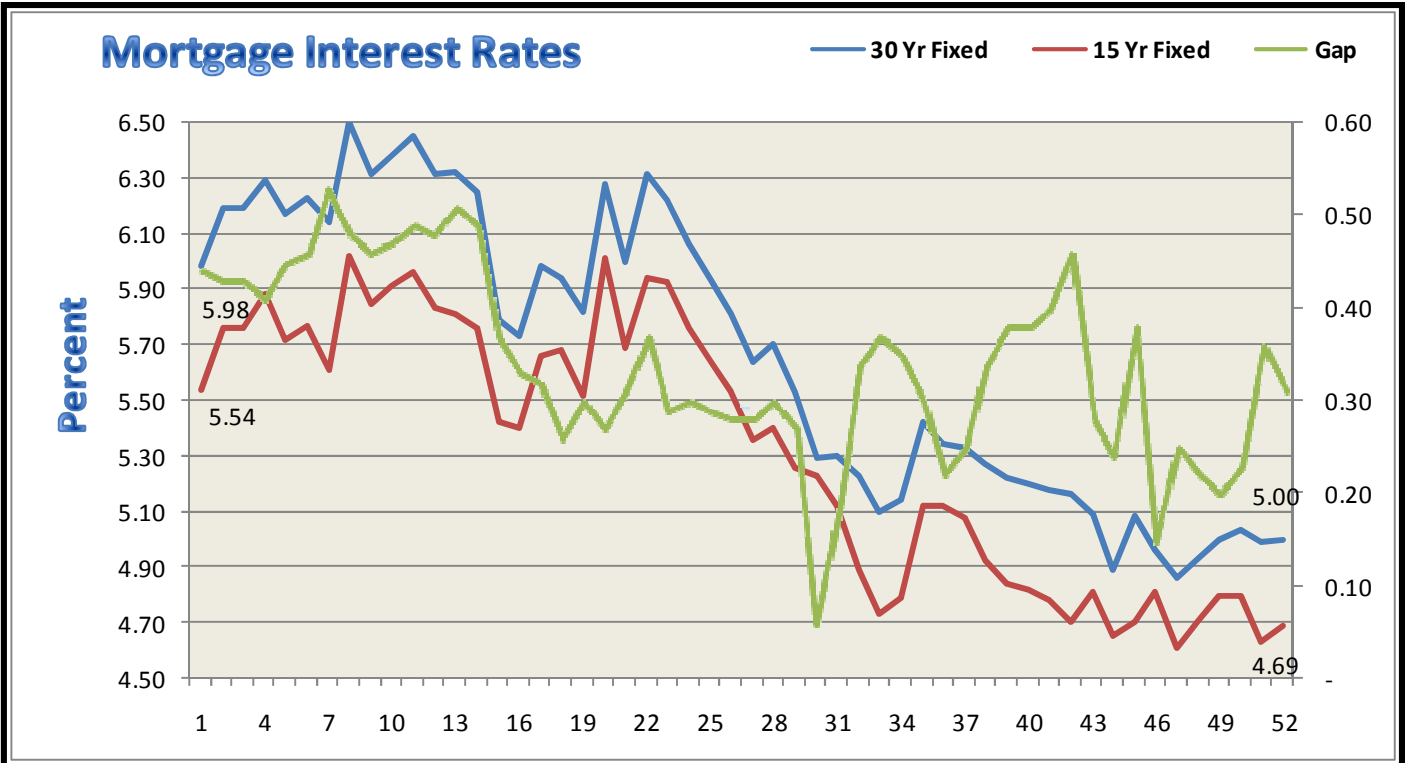
# INWEST TITLE SERVICES

<b>South Ogden</b>	<b>801 475-4410</b>	<b>Layton</b>	<b>801 773-9806</b>
<b>Salt Lake</b>	<b>801 264-0700</b>	<b>Sandy</b>	<b>801 208-2000</b>
<b>Tooele</b>	<b>435 882-5510</b>	<b>Grantsville</b>	<b>435 884-3221</b>
<b>Orem State St.</b>	<b>801 932-1013</b>	<b>Orem Center St.</b>	<b>801 221-9277</b>
<b>Spanish Fork</b>	<b>801 794-2115</b>	<b>Park City</b>	<b>435 649-6655</b>
<b>Cedar City</b>	<b>435 586-5601</b>	<b>St. George</b>	<b>435 634-5080</b>
<b>West Haven (Corporate offices)      2037 West Commerce Way, Ogden, UT 84401 - 801 399-3544</b>			

## National Mortgage Loan Applications

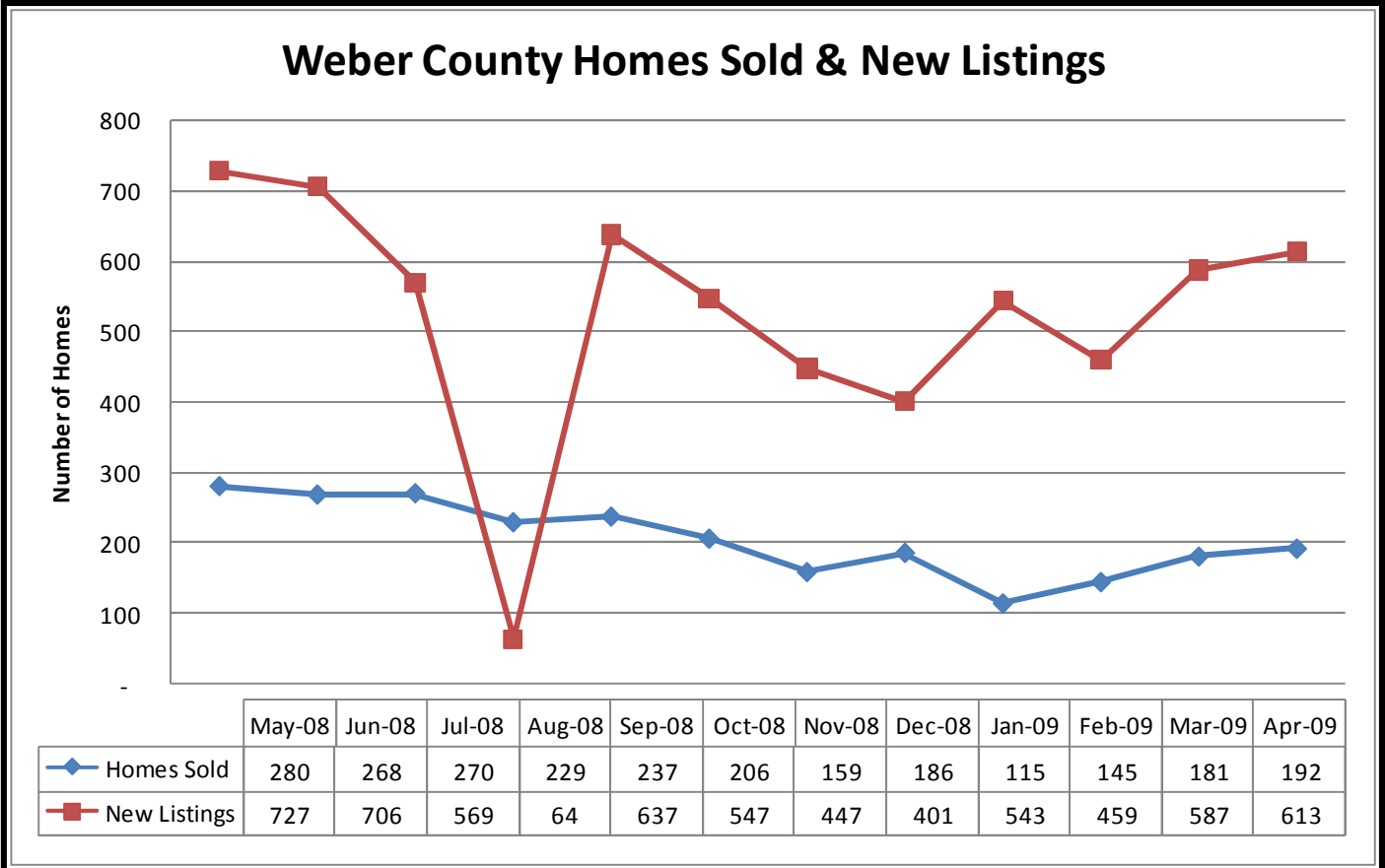


Seasonally adjusted indices from the Mortgage Bankers Association of America (MBA) shows the major loan application indices for the past 52 weeks. For the week ending May 22, 2009 the indices decreased an average of -10.8%. The Refi Index decreased -18.9%, the Market Index decreased -14.2%, and the Purchase Index increased 0.8%. For more information go to [www.mortgagebankers.org](http://www.mortgagebankers.org).

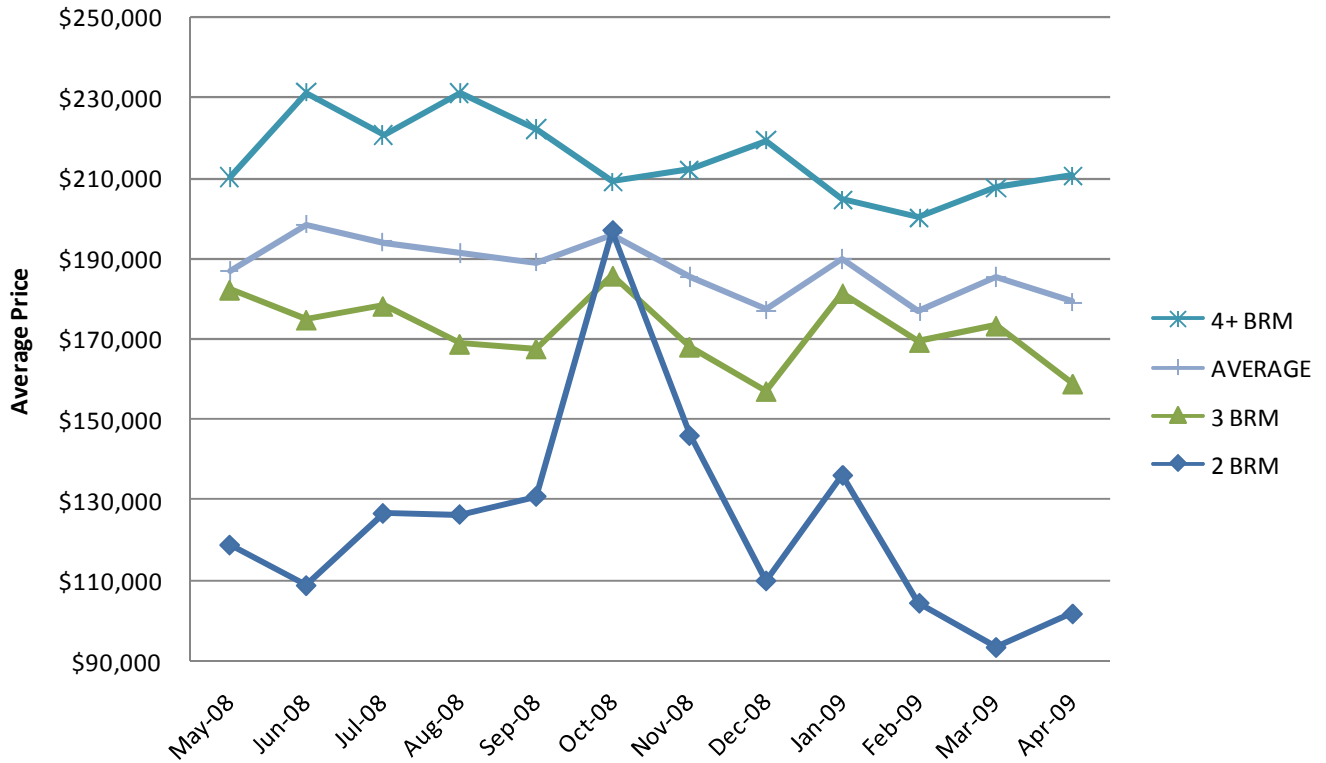


The Bankrate.com average mortgage interest rates are 5.0% and 4.69% for 30 year and 15 year mortgages, respectively.

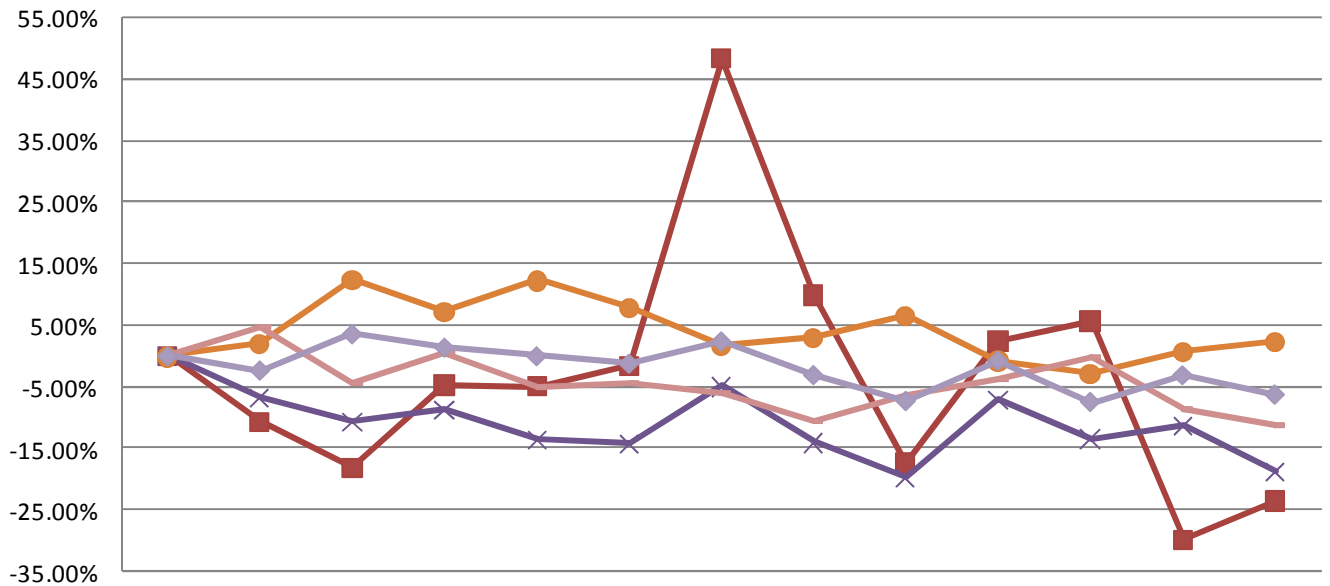
Freddie Mac reports mortgage rates from its weekly survey at 4.82% for a 30 year mortgage, 4.5% for the 15 year mortgage, and 4.82% for the 1 year ARM.



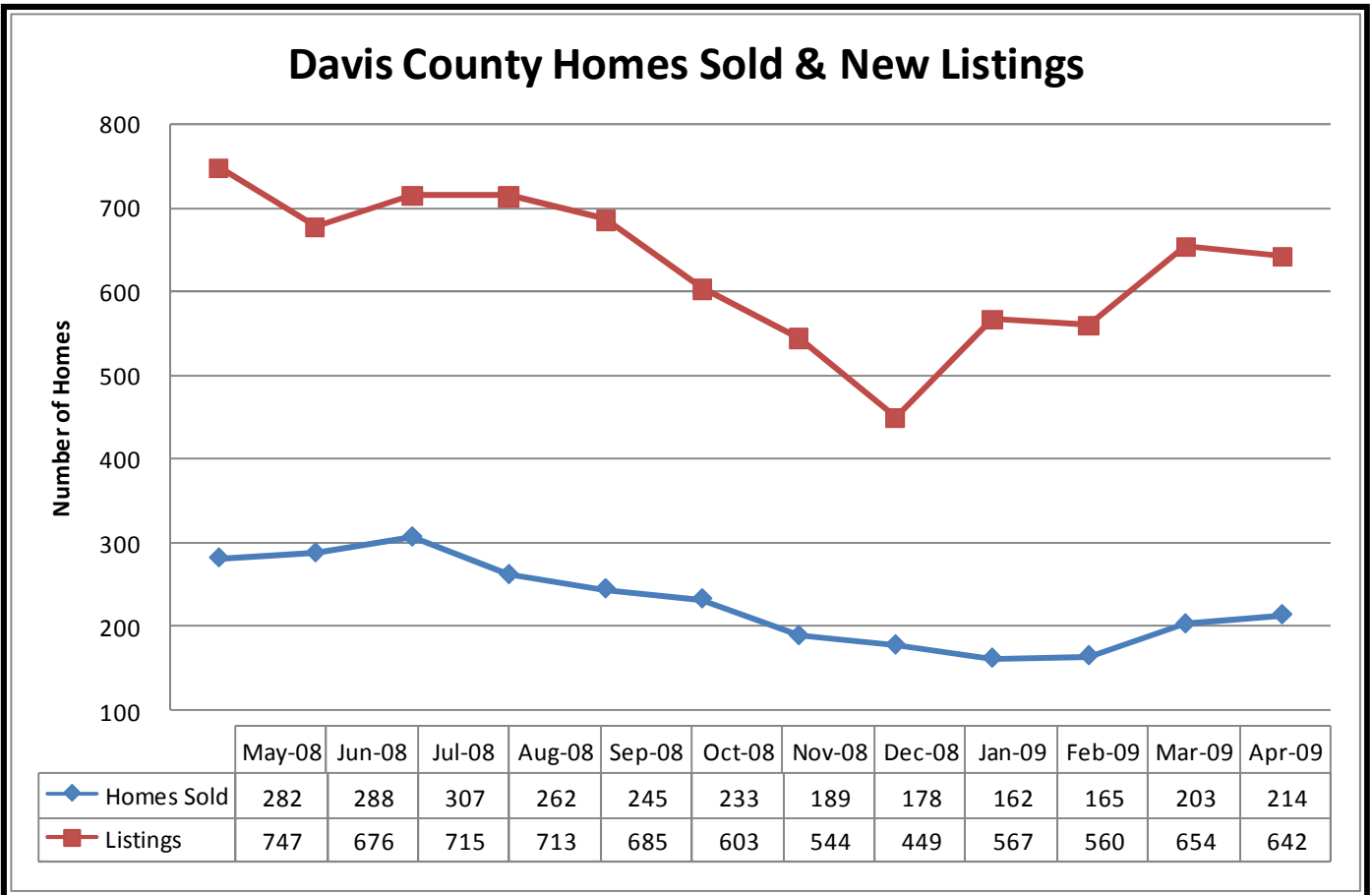
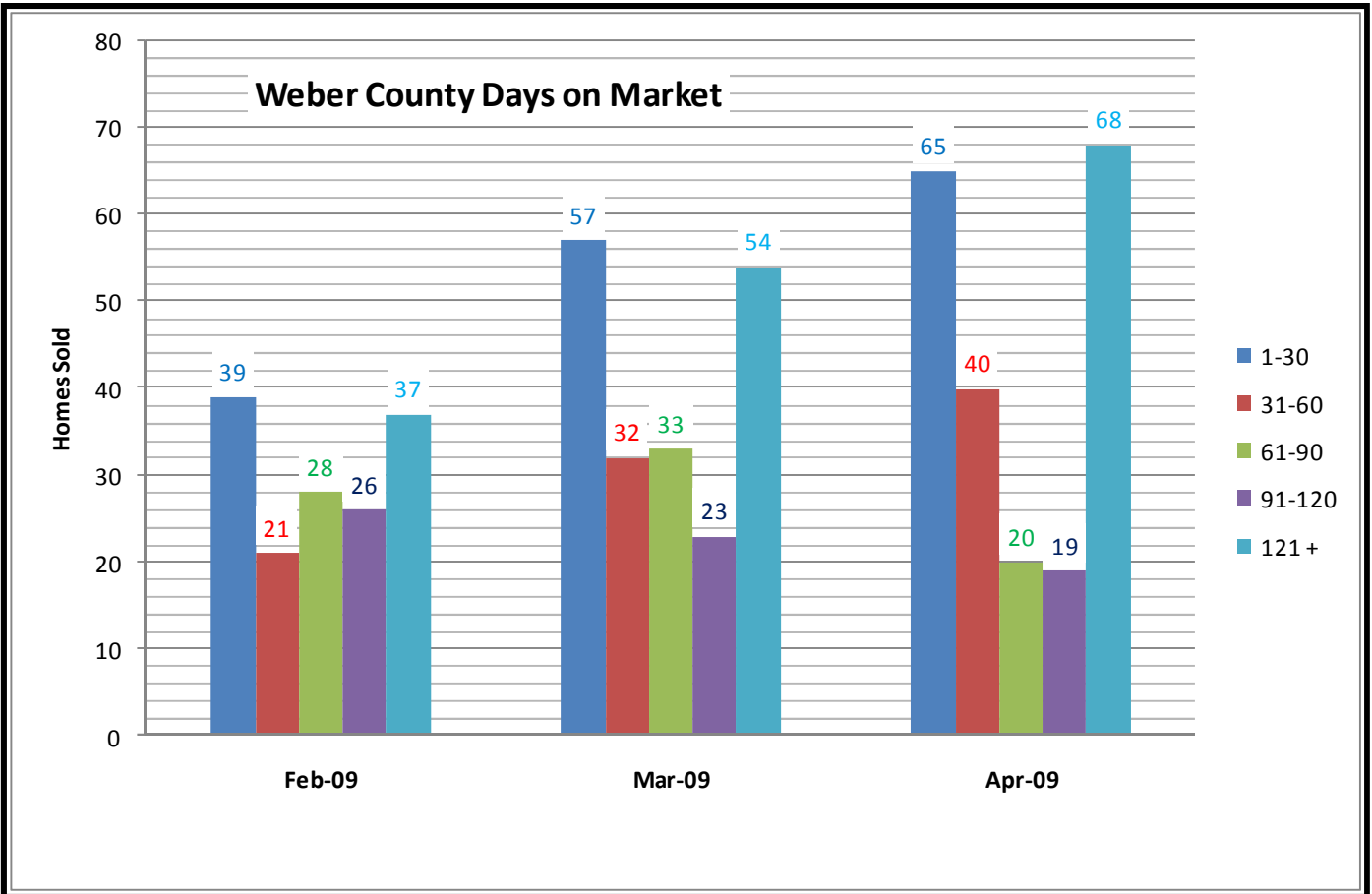
### Weber County Average Sales Price



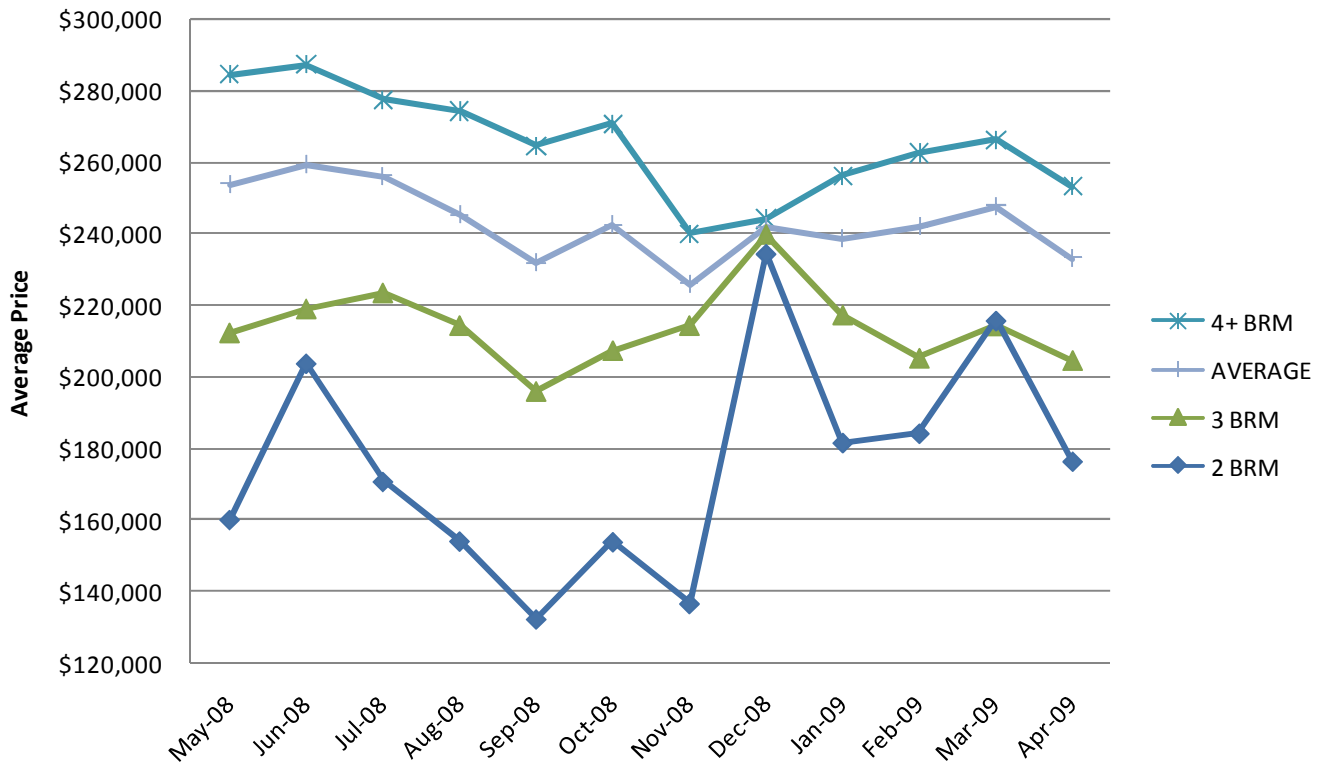
### Weber County Percent Increase - Sales Price



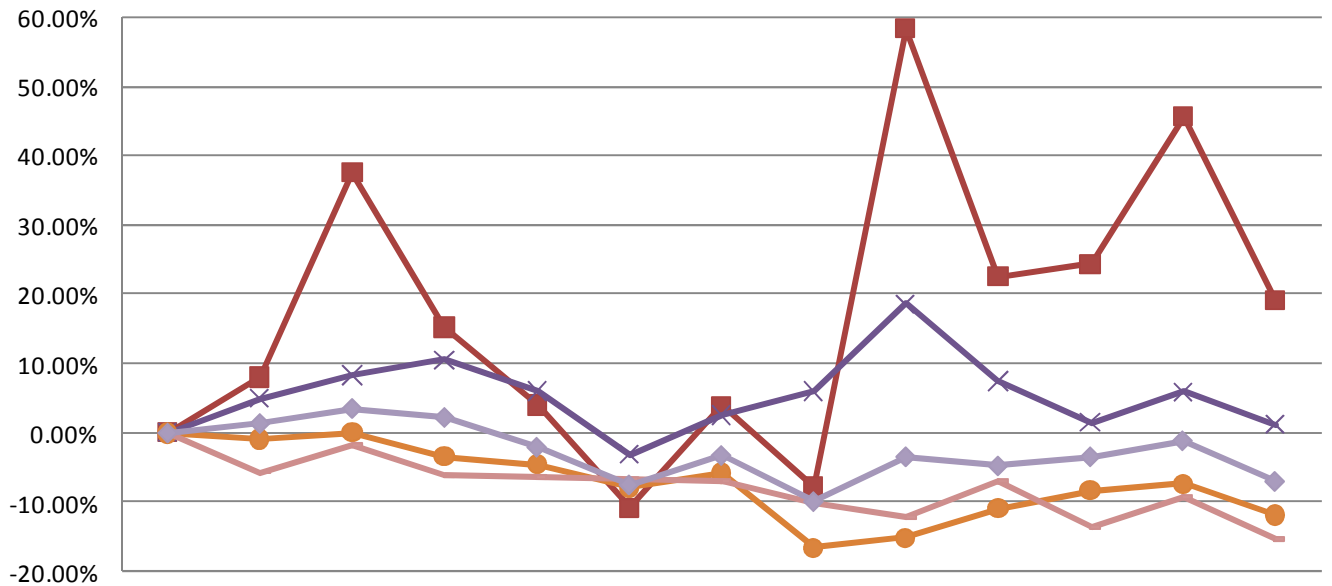
	Apr-08	May-08	Jun-08	Jul-08	Aug-08	Sep-08	Oct-08	Nov-08	Dec-08	Jan-09	Feb-09	Mar-09	Apr-09
2 BRM	0.00%	-10.58%	-18.14%	-4.67%	-4.87%	-1.50%	48.17%	9.84%	-17.26%	2.43%	5.69%	-29.68%	-23.44%
3 BRM	0.00%	-6.73%	-10.53%	-8.79%	-13.62%	-14.22%	-4.92%	-14.00%	-19.65%	-7.16%	-13.41%	-11.30%	-18.70%
4+ BRM	0.00%	2.17%	12.37%	7.23%	12.25%	7.92%	1.64%	3.06%	6.62%	-0.65%	-2.74%	0.82%	2.36%
Listings	0.00%	4.63%	-4.54%	0.28%	-5.08%	-4.44%	-6.09%	-10.61%	-6.30%	-3.95%	-0.23%	-8.63%	-11.32%
Avg	0.00%	-2.35%	3.65%	1.43%	0.00%	-1.23%	2.47%	-3.12%	-7.39%	-0.75%	-7.56%	-3.14%	-6.33%



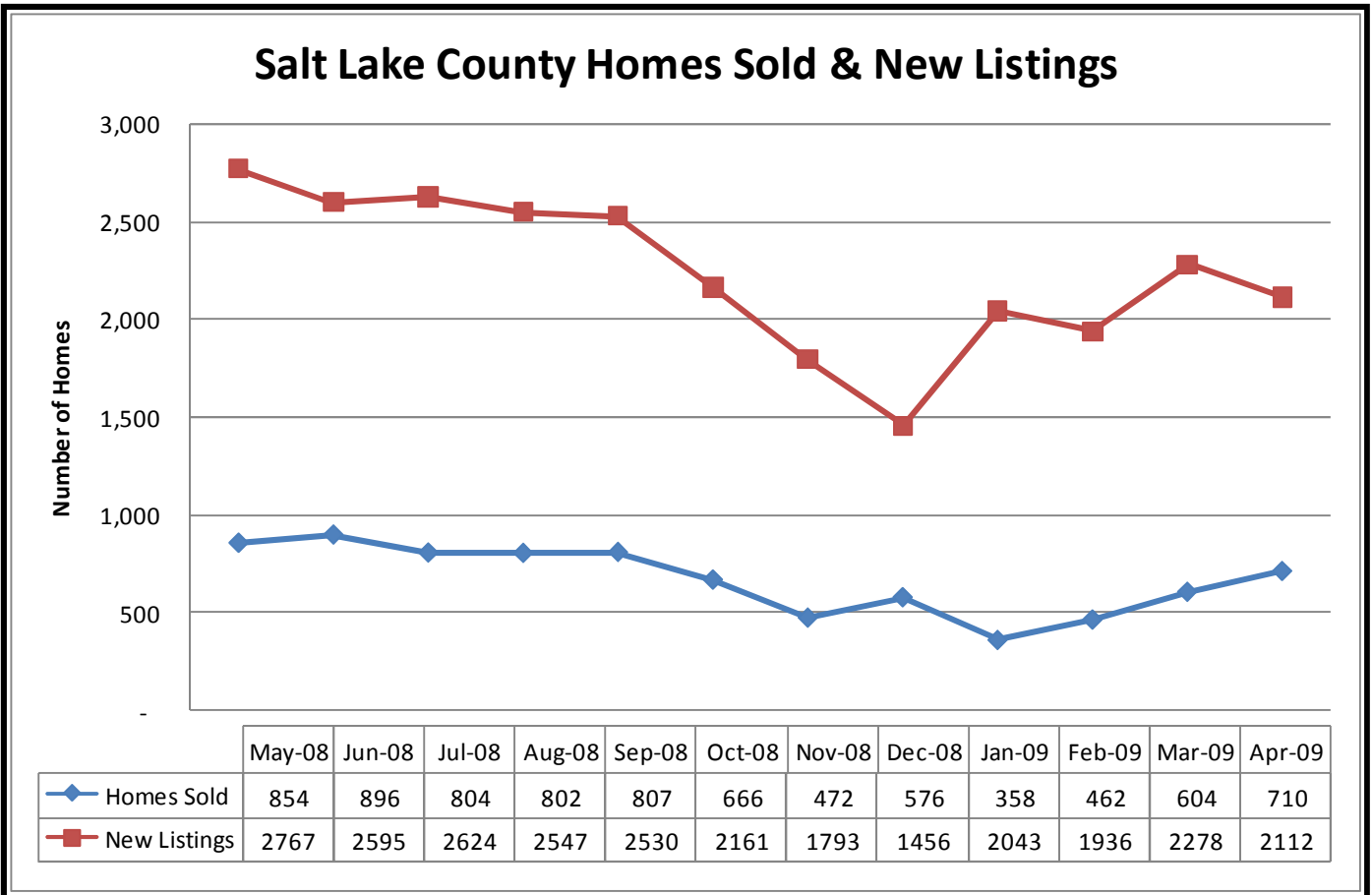
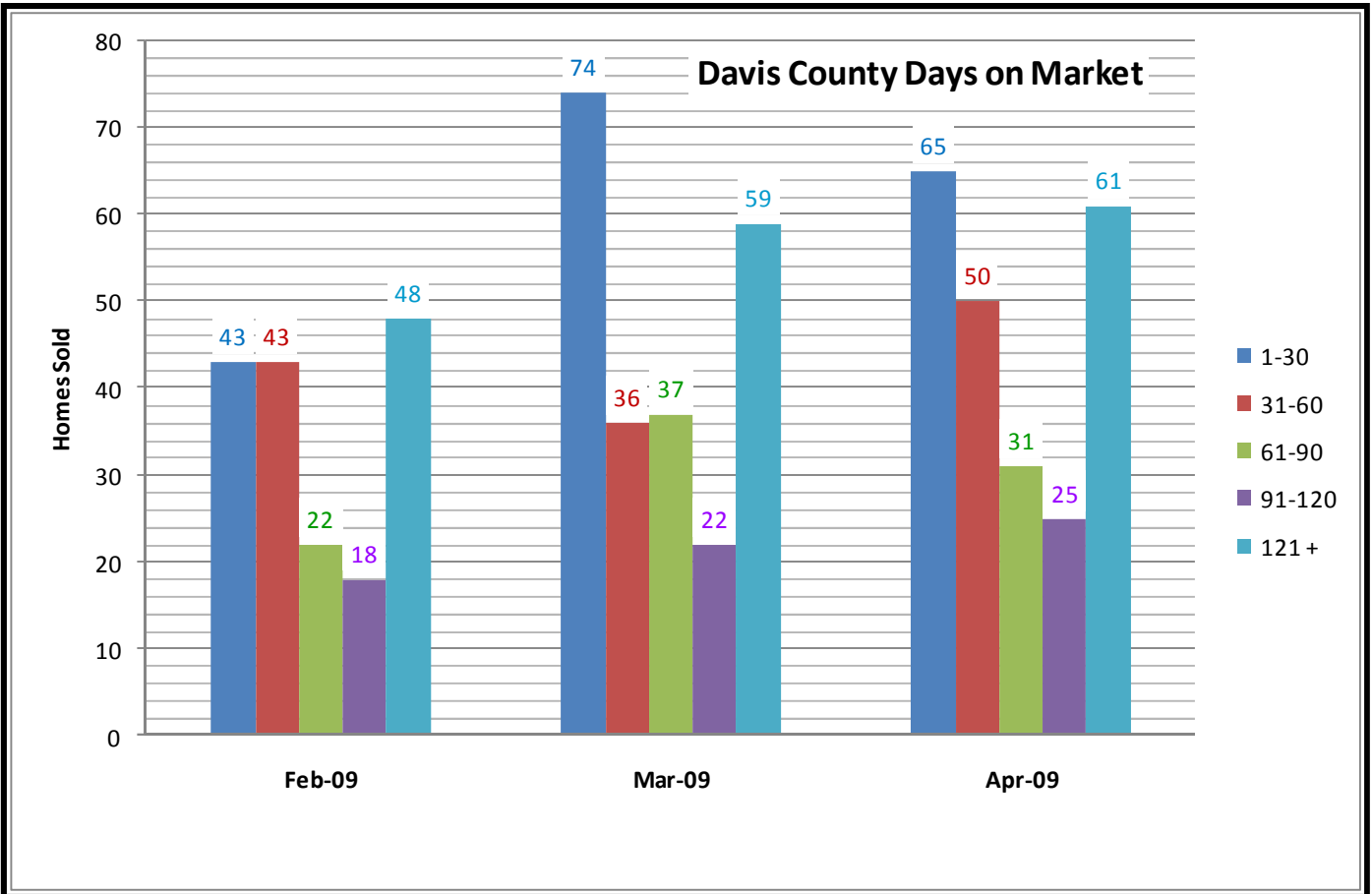
### Davis County Average Sales Price



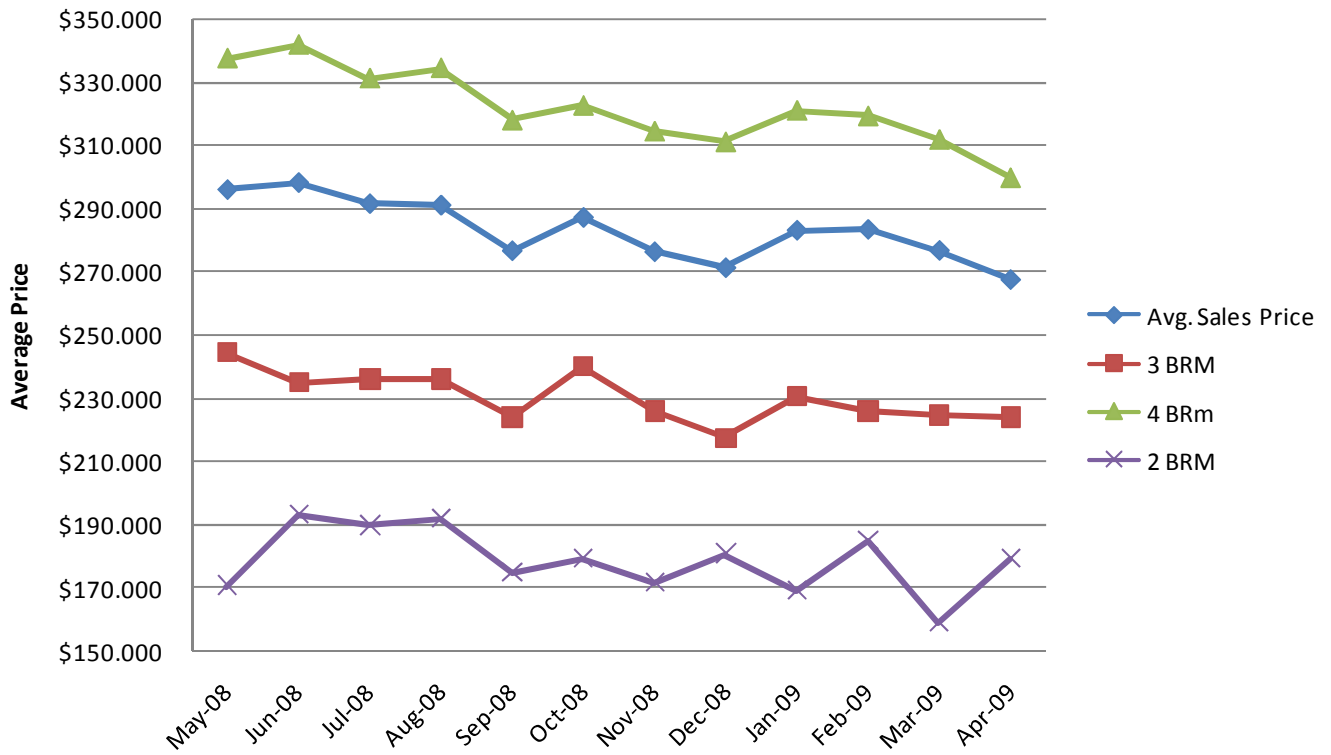
### Davis County Percent Increase - Sales Price



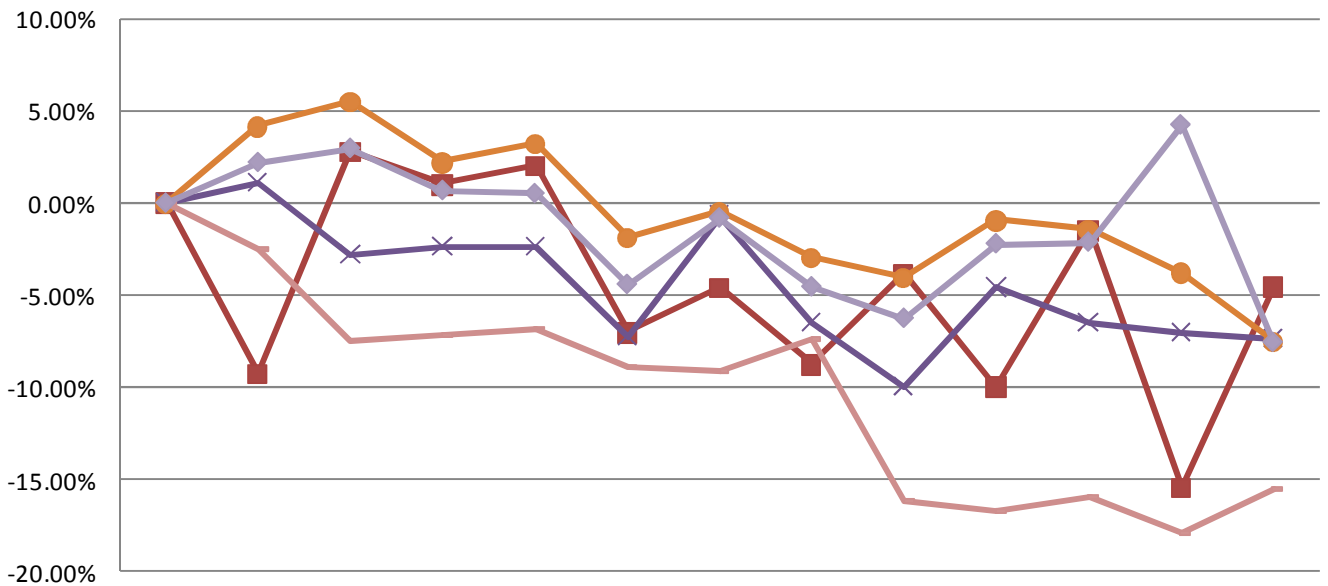
	Apr-08	May-08	Jun-08	Jul-08	Aug-08	Sep-08	Oct-08	Nov-08	Dec-08	Jan-09	Feb-09	Mar-09	Apr-09
2 BRM	0.00%	8.00%	37.59%	15.21%	3.93%	-10.84%	3.78%	-7.90%	58.33%	22.57%	24.34%	45.69%	19.04%
3 BRM	0.00%	5.03%	8.33%	10.54%	6.04%	-3.06%	2.57%	6.03%	18.62%	7.50%	1.53%	5.98%	1.21%
4+ BRM	0.00%	-0.92%	0.04%	-3.38%	-4.49%	-7.88%	-5.72%	-16.43%	-14.99%	-10.82%	-8.24%	-7.30%	-11.83%
Listings	0.00%	-5.61%	-1.75%	-6.17%	-6.32%	-6.53%	-6.98%	-10.05%	-12.13%	-7.02%	-13.44%	-9.30%	-15.24%
Avg	0.00%	1.37%	3.53%	2.24%	-2.05%	-7.46%	-3.23%	-9.88%	-3.42%	-4.74%	-3.42%	-1.11%	-6.97%



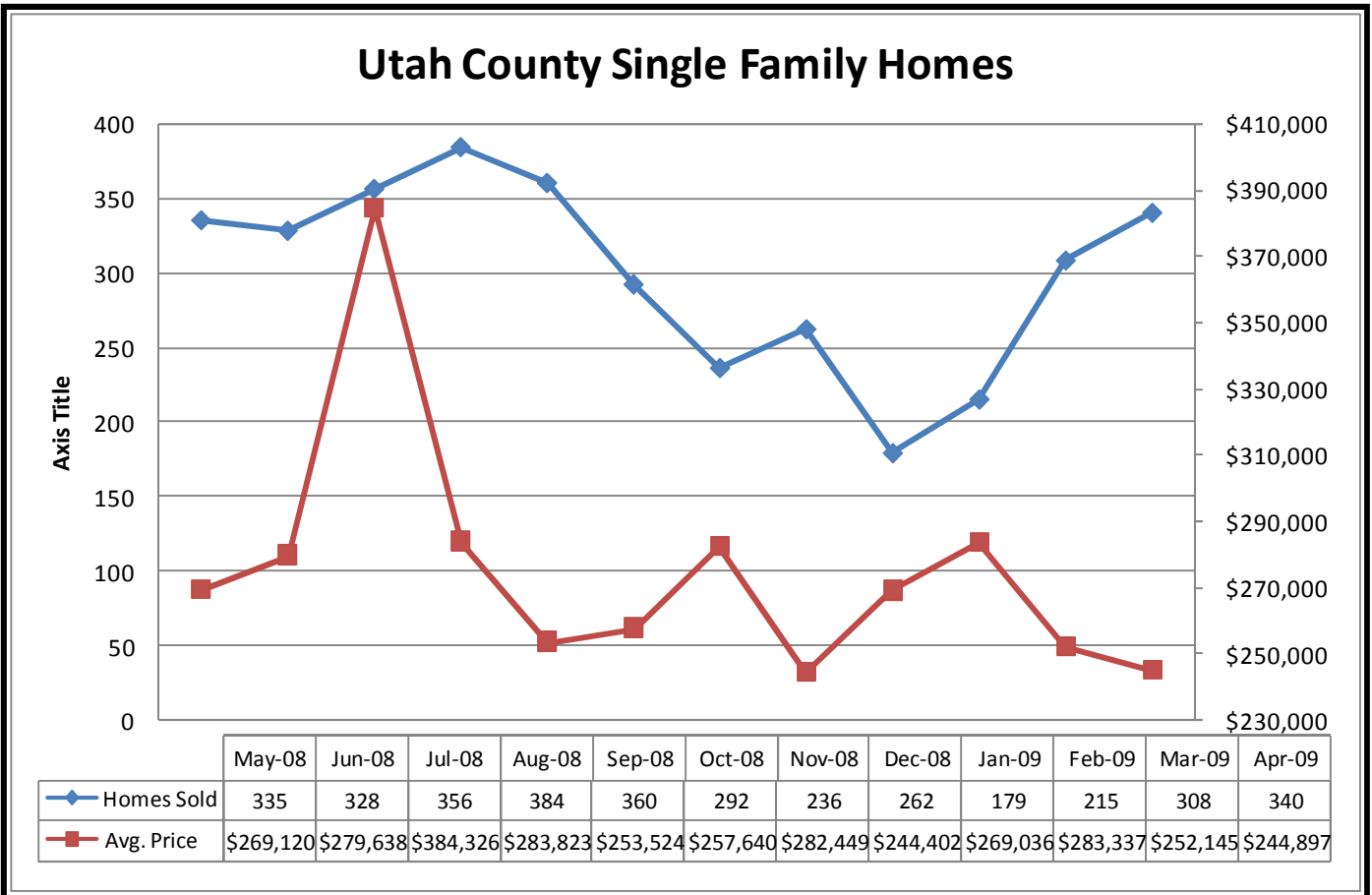
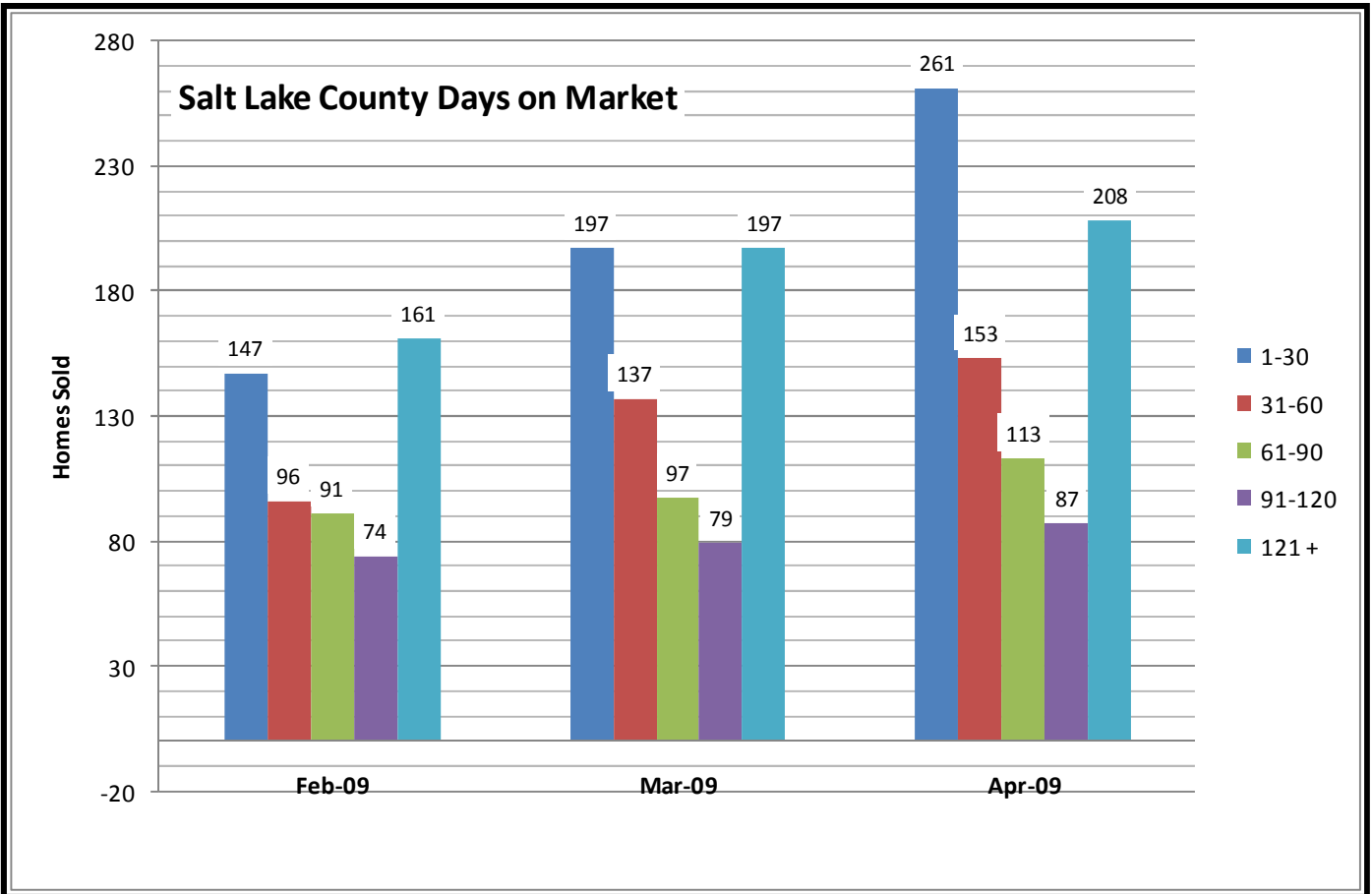
### Salt Lake County Average Sales Price



### Salt Lake County Percent Increase - Sales Price

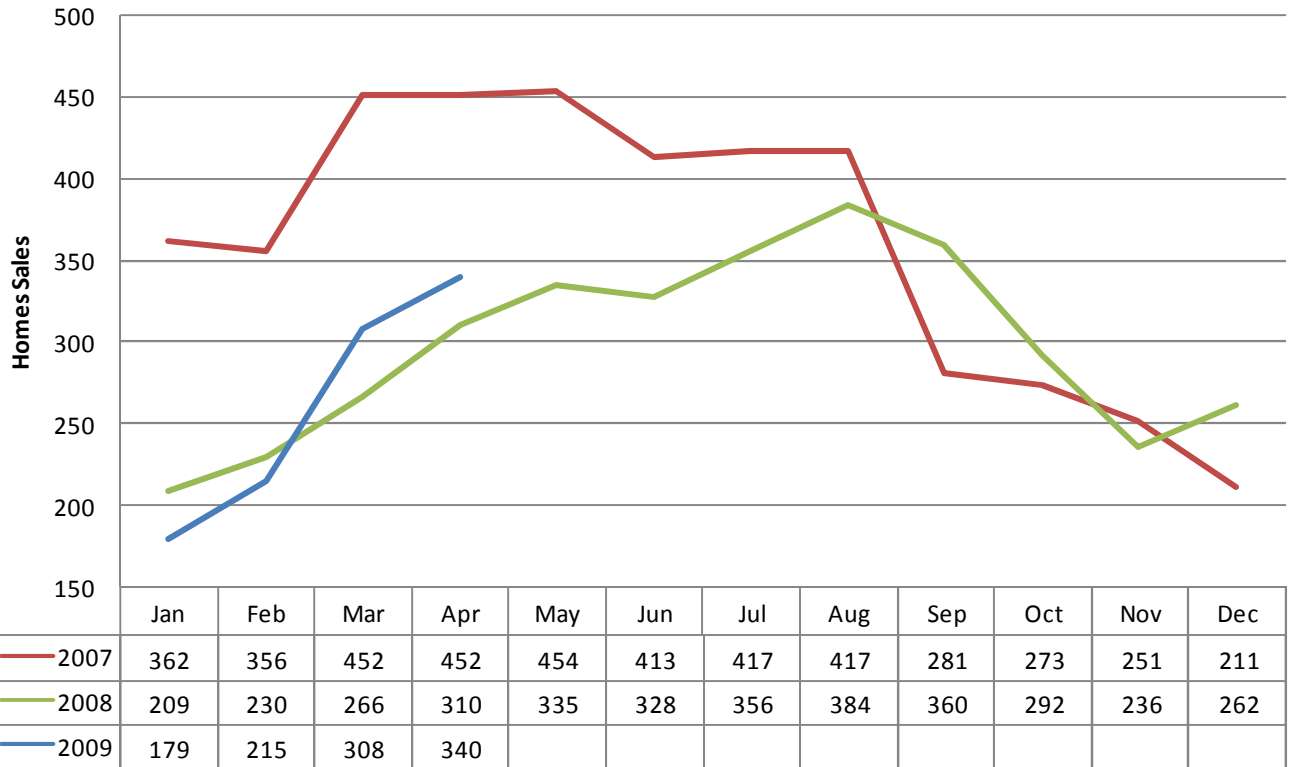


	Apr-08	May-08	Jun-08	Jul-08	Aug-08	Sep-08	Oct-08	Nov-08	Dec-08	Jan-09	Feb-09	Mar-09	Apr-09
2 BRM	0.00%	-9.23%	2.75%	0.98%	2.04%	-7.03%	-4.60%	-8.76%	-3.83%	-9.97%	-1.52%	-15.42%	-4.55%
3 BRM	0.00%	1.09%	-2.82%	-2.36%	-2.41%	-7.29%	-0.71%	-6.53%	-9.98%	-4.60%	-6.54%	-7.05%	-7.35%
4+ BRM	0.00%	4.17%	5.49%	2.21%	3.21%	-1.88%	-0.45%	-2.96%	-4.00%	-0.93%	-1.46%	-3.77%	-7.49%
Listings	0.00%	-2.53%	-7.43%	-7.14%	-6.78%	-8.84%	-9.11%	-7.41%	-16.10%	-16.71%	-15.89%	-17.88%	-15.46%
AVERAGE	0.00%	2.21%	2.98%	0.69%	0.51%	-4.44%	-0.81%	-4.56%	-6.28%	-2.22%	-2.13%	4.26%	-7.59%

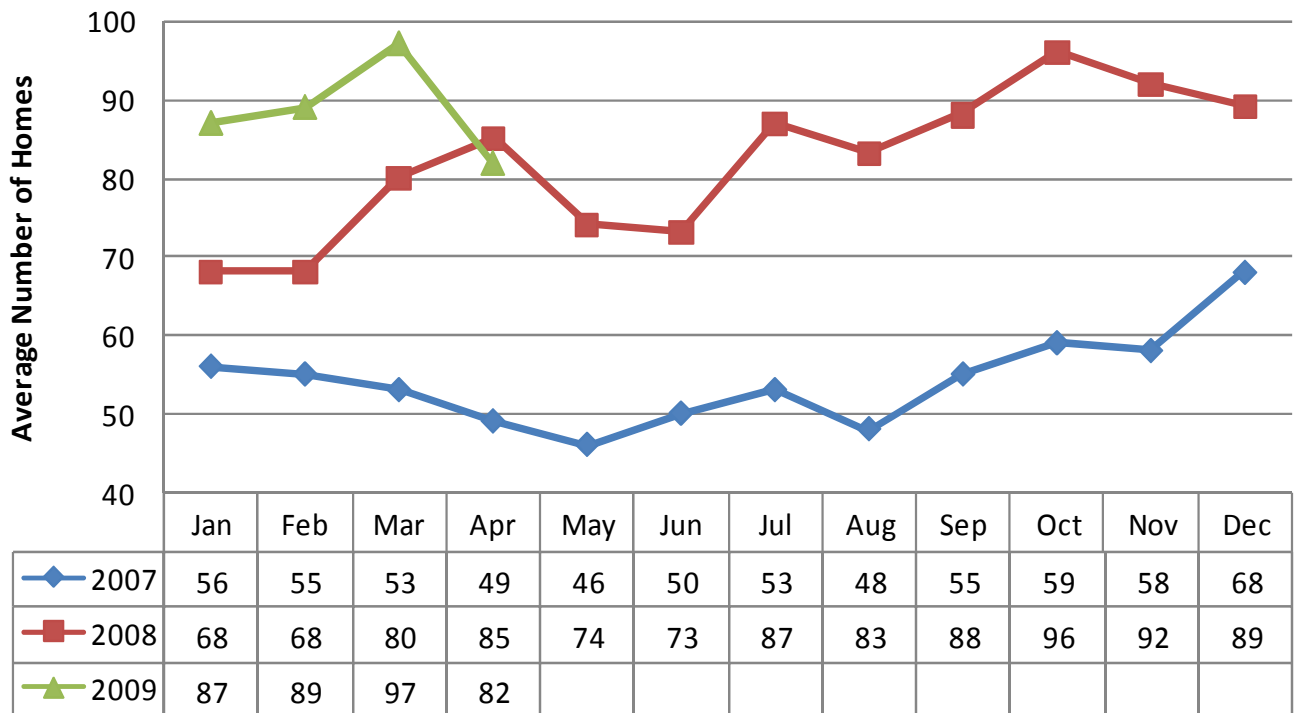


Go to [www.inwesttitle.com](http://www.inwesttitle.com) for previous reports.

## Utah County Single Family Home Sales



## Days on the Market



**You are receiving this e-mail Market Data Report from Inwest Title Services, Inc. as a means to keep you posted on local, state, and national market trends.**

**It is our pleasure to compile and supply you with this information on a regular basis. If you wish to discontinue receiving this report, please respond with “Unsubscribe” in the Subject Line.**

